

HTEK Global Track

2 Circuit/2 Neutral, 277V



Features

Global HTEK track is a 277V, 2 circuit/2 neutral track system. The HTEK track features a well-designed extruded aluminum profile which allows suspension points up to 6' o.c. This track offers two 20-amp circuits (**originating from the same phase**), and twice the capacity of standard 120V track due to the efficiency of 277V powered light fixtures, allowing for longer runs with more fixture capacity. Reduced installation costs are also obtained because of fewer feed points, fewer home runs, and no need for step-down transformers to power typical 120V track systems.

Product Overview

Type:	Track Power Supply
Circuit(s):	2 Circuit/2 Neutral
Voltage:	277V
Amps:	20 amps per circuit

PROJECT:

TYPE:

Specifications

Application

Power supply for Amerlux® track lighting fixtures

Construction

Architectural grade, extruded aluminum housing
Milled grounding bar provides continuous ground contact
Continuously crimped conductor ensures mechanical strength and electrical reliability

Electrical

2 Circuit/2 Neutral, 277V, 20 amps per circuit

Finish

Black, White or Gray

Mounting

T-grid, threaded rod or aircraft cable suspension or surface mount options
6' max on center suspension points

Certifications

cUL listed for dry locations only



HTEK Global Track

2 Circuit/2 Neutral, 277V



PROJECT:

TYPE:

Track Ordering Information



Track

1	Model	2	Finish
	HTEK44 - 4' (48")		1 - gray
	HTEK48 - 8' (96")		2 - black
	HTEK412 - 12' (144")		3 - white

Component Ordering Information



Components (ordered separately)

1	Model
	HTEK11 - live end (standard)
	HTEK12 - live end (reverse)
	HTEK14 - live center feed
	TEK21* - straight connector
	HTEK24 - adjustable connector
	HTEK34 - L connector, feedable, adj. universal polarity
	HTEK38 - X connector, feedable
	HTEK39 - T connector, feedable, adjustable right polarity
	HTEK40 - T connector, feedable, adjustable left polarity
	TEK41* - dead end
	GES15 - outlet box cover (for surface mount drywall only)
	SKB12-1** - ceiling clamp (for cable and rod mounting, aluminum finish only)
	XTSV12** - bending tool (required to bend conductors to proper angle when track is field cut)
	* Compatible with XTS, TEK & HTEK track
	** Finish option not required for this option
2	Finish (for use with HTEKxx/TEKxx/GES15 models above)
	1 - gray
	2 - black
	3 - white

Mounting/Suspension Ordering Information



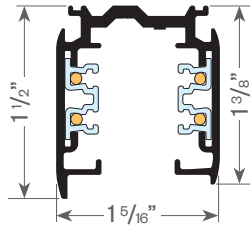
Mounting/Suspension Parts (ordered separately, see pg4 for details)

1	Model - Clips
	677-0897 - T-grid clip, 9/16" Flat T (fixed suspension)
	636-0600K - T-grid clip, 9/16" Flat T (sliding suspension)
	677-0801 - T-grid clip, 15/16" Flat T (fixed suspension)
	636-0171K - T-grid clip, 15/16" Flat T Kit (sliding suspension)
	636-0566K - sliding suspension kit (with cable gripper, A/C Cable not included)
	<u>Model - Power Feed/Non-Power Feed (see pg 4 for details):</u>
	636-0578 - power feed metal canopy kit, white (includes aircraft cable; power feed cord ordered separately or by others)
	636-0579 - power feed canopy kit, metal black (includes aircraft cable; power feed cord ordered separately or by others)
	636-0264 - non-power feed canopy kit, black
	636-0268 - non-power feed canopy kit, white
	618-0029-10 - 12/5 SJT power feed cable, white, 10 ft
	618-0029-20 - 12/5 SJT power feed cable, white, 20 ft
	618-0032-10 - 12/5 SJT power feed cable, black, 10 ft
	618-0032-20 - 12/5 SJT power feed cable, black, 20 ft
	301-4366 - aircraft cable suspension kit
	<u>Model - Canopy</u>
	636-0001K - plastic canopy kit, white
	636-0076K - plastic canopy kit, black
	<u>Stem Pendant Mounting (see pg 5 for details):</u>
	701-0039** - power feed suspension point
	701-0040** - non-feed suspension point
	701-0054** - "L" (90°) connector suspension point
	701-0055** - "T" connector suspension point
	701-0056** - "X" connector suspension point
	701-0025 - stem/canopy kit, 12" stem, black texture
	701-0026 - stem/canopy kit, 12" stem, white texture
	701-0050ST - stem/canopy kit, 12" stem, silver texture (gray)
	701-0027 - stem/canopy kit, 18" stem, black texture
	701-0028 - stem/canopy kit, 18" stem, white texture
	701-0051ST - stem/canopy kit, 18" stem silver texture (gray)
	701-0029 - stem/canopy kit, 24" stem, black texture
	701-0030 - stem/canopy kit, 24" stem, white texture
	701-0052ST - stem/canopy kit, 24" stem silver texture (gray)
	701-0031 - stem/canopy kit, 48" stem, black texture
	701-0032 - stem/canopy kit, 48" stem, white texture
	701-0053ST - stem/canopy kit, 48" stem, silver texture (gray)
	* specify length; ** specify finish (-WT, -BT, -ST (gray))
	Consult factory for other T-Grid options

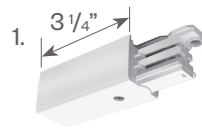
PROJECT:

TYPE:

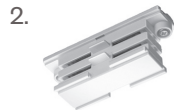
HTEK Track and Components



HTEK Track and Components



HTEK11 - Live End (standard)
HTEK12 - Live End (reverse)
(used for Conduit feed also)



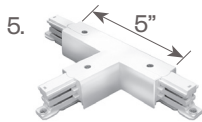
TEK21 - Straight Connector
(Compatible with XTS, TEK & HTEK track)



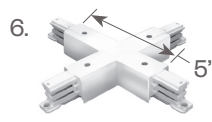
HTEK14 - Live Center Feed



HTEK34 - L Connector, feedable
(adjustable universal polarity)



a. **HTEK39** - T Connector, feedable
(adjustable right polarity)
b. **HTEK40** - T Connector, feedable
(adjustable left polarity)



HTEK38 - X Connector,
feedable

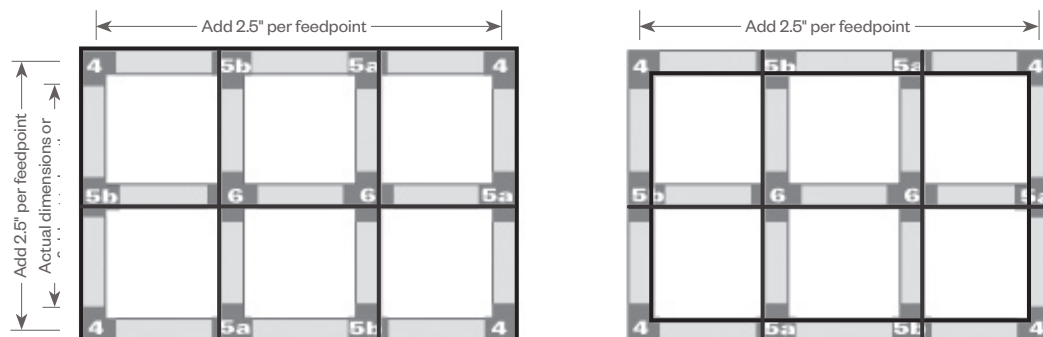
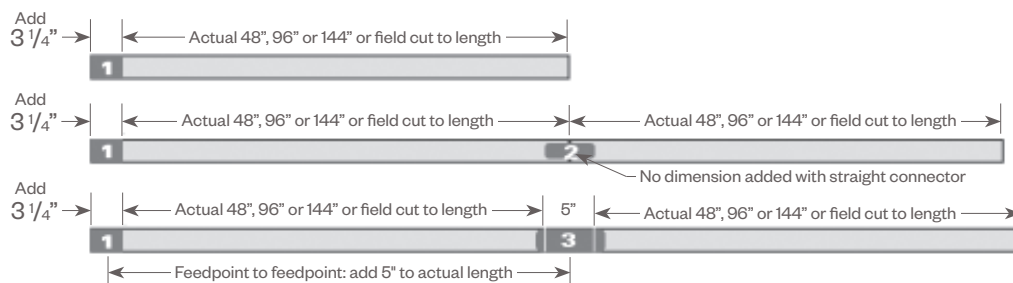


HTEK24 - Adjustable
Connector



TEK41 - Dead End
(Compatible with XTS, TEK & HTEK track)

TEK Track Configuration



HTEK track is polarized and manufactured with identifying ridges (shown as bold lines on diagrams).
Refer to these diagrams to ensure proper connector selection.

HTEK Global Track

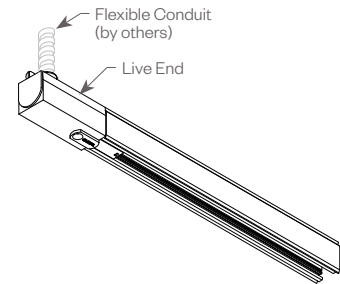
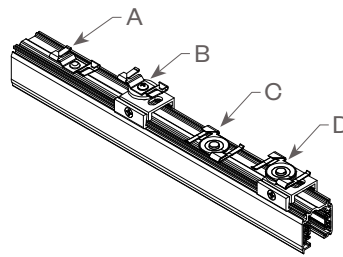
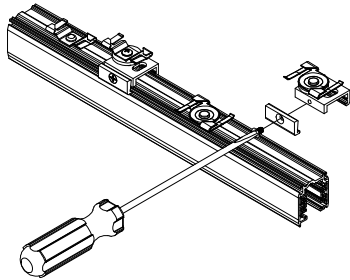
2 Circuit/2 Neutral, 277V



PROJECT:

TYPE:

T-GRID SURFACE MOUNTED



T-GRID CLIPS:

A: 677-0897 used for 9/16" Flat T (Fixed Suspension)

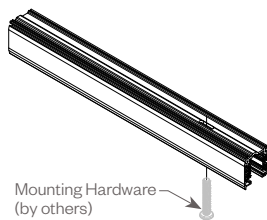
B: 636-0600K used for 9/16" Flat T (Sliding Suspension)

C: 677-0801 used for 15/16" Flat T (Fixed Suspension)

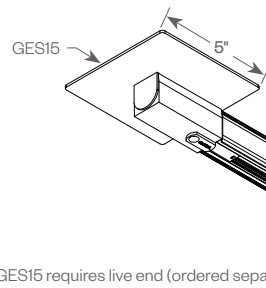
D: 636-0171K used for 15/16" Flat T (Sliding Suspension)

Consult Factory for other T-Grid options

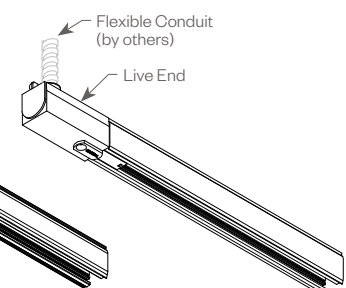
SURFACE MOUNT (DRYWALL)



For Junction Box Applications

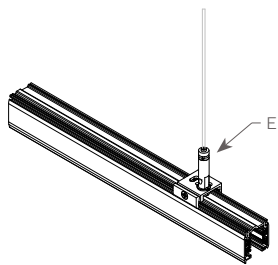


For Non-Junction Box Applications



GES15 requires live end (ordered separately)

AIRCRAFT CABLE SUSPENSION



E: HTEK SLIDING SUSPENSION

636-0566K (Does not include aircraft cable)

F: POWER FEED CANOPY KIT

636-0578 (white)
636-0579 (black)

G: NON-POWER FEED CANOPY KIT

636-0264 (black)
636-0268 (white)

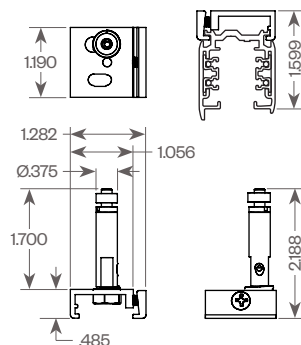
H: POWER FEED CORD (ordered separately)

618-0029-XXX.XX (12/5 cord, white)
618-0032-XXX.XX (12/5 cord, black)
Example: 618-0029-120.00
Power Feed Cable, White, 10' long

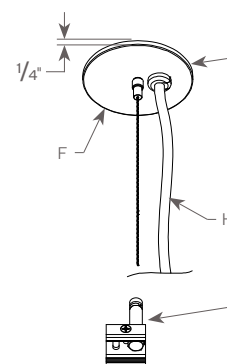
NOTES:

1. 20' aircraft cable supplied with kits, except with 636-0566K
2. 12/5 power feed cord ordered separately or by others
3. 636-0566K is to be used in conjunction with canopy kits
4. Canopy kits require junction box for installation (by others)

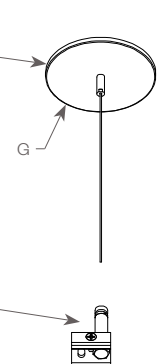
SKB12 with Gripper



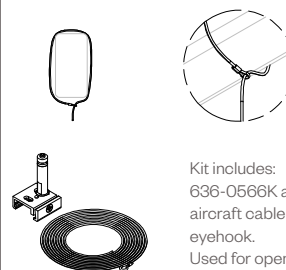
Power Feed Canopy Kit



Non-Power Feed Canopy Kit



Aircraft Cable Suspension Kit 301-4366

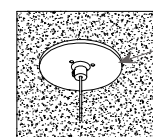


Kit includes:
636-0566K and 20' aircraft cable with eyehook.
Used for open ceiling suspension.

Plastic Canopy Kit (ordered separately)

636-0001K (white)
636-0076K (black)

Ø2 1/2"



Canopy is to be used to cover a hole in a ceiling tile.

HTEK Global Track

2 Circuit/2 Neutral, 277V

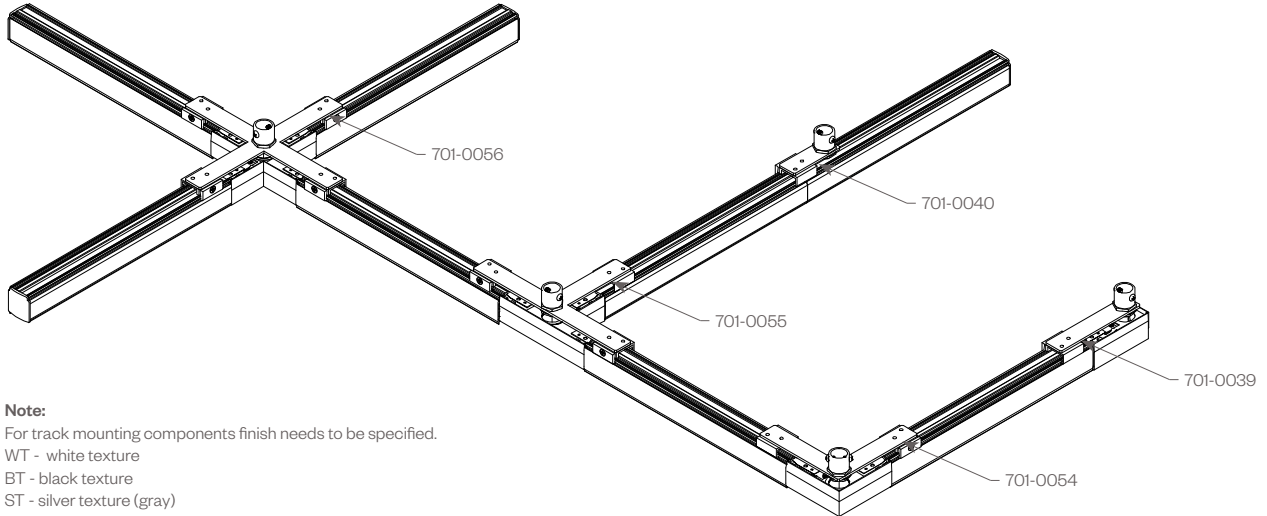


PROJECT:

TYPE:

STEM MOUNT SUSPENSION

Stems are field cuttable



Note:

For track mounting components finish needs to be specified.

WT - white texture

BT - black texture

ST - silver texture (gray)

Example:

701-0056-WT

3/8" STEM/CANOPY KIT:

Includes crossbar & hardware.

Available in 12", 18", 24" & 48" stem lengths.

Stems are field cuttable.

701-0025 - 12", black texture

701-0026 - 12", white texture

701-0050ST - 12" silver texture (gray)

701-0027 - 18", black texture

701-0028 - 18", white texture

701-0051ST - 18" silver texture (gray)

701-0029 - 24", black texture

701-0030 - 24", white texture

701-0052ST - 24" silver texture (gray)

701-0031 - 48", black texture

701-0032 - 48", white texture

701-0053ST - 48" silver texture (gray)

