

# SPEQ-L Kicker Wall Wash

Large Track Head



PROJECT:

TYPE:

## Features

Bring attention, reveal rich textures and bring out the truest colors on wall mounted artwork and merchandise with the architecturally styled SPEQ Kicker Wall Wash. Ideal for murals, galleries and commercial lobby applications, the newest addition to the SPEQ architectural track head family complements its clean aesthetic and provides dramatic wall washing down walls with a uniform look. The fixture features a cut front snoot and kick optics, has no visible heat sink or venting, and the integral driver is fully featured, with low-end dimming and full 2.5 KV surge protection. For the perfect blend of exceptional aesthetics, optical performance and superior output, look no further than Amerlux's expanding SPEQ family.



SPEQ-L-KWW

## Product Overview

Type: Track Wall Wash  
Wattage: 33W, 41W, 48W  
Color Temp: 2700K, 3000K, 3500K, 4000K  
CRI: 83 typ. or 90+ typ.  
CrispWhite & 3K Class A LED's available  
Dimming: TRIAC & ELV, 5% Dim, 120/277VAC

## Certifications



## Fixture Summary

### Performance Data

Watts	Delivered Lumens	LPW	Color Temp-CRI
33	1707	51.7	3000K-83
41	2034	49.6	3000K-83
48	2338	49.4	3000K-83

Data is based on 3000K-83 120V IES files available on website.

### Electrical Data

Voltage	33W		41W		48W	
	System Watts	Amps	System Watts	Amps	System Watts	Amps
120V	33	0.28	41	0.34	48	0.40
277V	33	0.12	41	0.15	48	0.17

Electronic constant current LED driver.

# SPEQ-L Kicker Wall Wash

Large Track Head



<b>PROJECT:</b>	<b>TYPE:</b>
-----------------	--------------

## Ordering Information

SPEQ-L-KWW				LE/TE		
1	2	3	4	5	6	7
<b>1 Model</b>	<b>2 Wattage</b>	<b>3 Finish</b>	<b>4 Mounting</b>			
SPEQ-L-KWW	33 41 48	WT white texture BT black texture ST silver texture <i>Other finishes, consult factory</i>	TN1 Global GES 1cir/H-Style, 120V TEK Global TEK 2cir/2neut, 120V TN3 Global XTS 3cir, 120V TN2 Global HTEK 2cir/2neut, 277V CT J-Style 1 or 2 cir, 120V LOL L-Style 1cir, 120V CPR Capri 1cir, 120V C canopy, 120V or 277V CCL2-SCP C-clamp, black, with straight cord*, 6' 120V CCL2-CCP C-clamp, black, with coil cord*, 5' 120V <i>Notes: * Black cord used for BT &amp; ST finish. White cord used for WT finish.</i>			
<b>5 Voltage</b>	<b>6 Color Temp</b>		<b>7 Driver</b>			
120 277	83 CRI      90+ CRI 27 2700K-83    279 2700K-90+ <b>CRISP</b> CrispWhite 30 3000K-83    309 3000K-90+ <b>3CLA</b> 3K Class A 35 3500K-83    359 3500K-90+ 40 4000K-83    409 4000K-90+		LE/TE TRIAC/ELV dimming, 120V only			

# SPEQ-L Kicker Wall Wash

Large Track Head



PROJECT:

TYPE:

## Specifications

### Application

Retail, Museum, Gallery, Hospitality and Commercial accent and display lighting

### Construction

Complete die-cast aluminum construction  
No exposed wiring  
Unique magnetic dual lock front door

### Optical

Amerlux Designed TIR optical system  
0-90° tilt, 360° rotation  
Tilt indicating marks for common tilt positioning  
Kicker Wall Wash optics

### LED

Color Temp Options: 2700K, 3000K, 3500K, 4000K  
CRI: 83 typ. or 90+ typ.  
CrispWhite\* and Class A\*\* 3000K LEDs available  
R9 Values: 11 (83 CRI), 55 (90+ CRI)  
Binning: 3-step MacAdam ellipse (SDCM)  
Life: 50,000+ hrs, > 70% of initial lumens at 50,000 hrs

*\*CrispWhite: CrispWhite Technology delivers the warmth of colors expected from a high 90 CRI solution but also creates the natural crisp white color similar to CMH sources. It creates impactful lighting by revealing the richest whites and vibrant colors that pop.*

*\*\*Class A LED: Class A LED's have a CRI > 80 and a GAI > 80. CRI defines color "Naturalness" and GAI defines color "Saturation." Both being high delivers rich colors and pure whites.*

### Electrical

Wattage: 33W, 41W, 48W  
Electronic constant current LED driver, 120VAC input  
**This product complies with IEEE C62.41 for surge endurance up to 2.5KV. Amerlux® recommends using additional surge protection with this unit (supplied by others), surge and over voltage damage is not covered under warranty.**

### Driver

LE/TE - Leading Edge (Triac, Forward Phase) or Trailing Edge (ELV, Reverse Phase) autosensing driver dims down to 5% on most dimming systems. 120V only  
See dimming pages for more information.

### Finish

Powder coat paint.  
Standard Colors: White Texture, Black Texture, Silver Texture  
Consult factory for custom RAL powder coat finishes

### Mounting

Track, canopy and c-clamp.  
**Note: Recommend track fixture mounting to horizontal surface mounted/pendant mounted track only**

### Certifications

Approved to UL standards as tested by CSA.  
Intended for indoor use only.

### Warranty

5 year limited warranty

# SPEQ-L Kicker Wall Wash

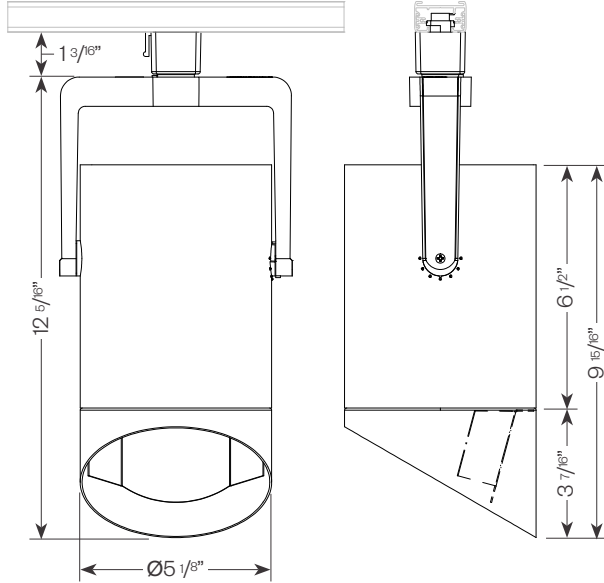
Large Track Head



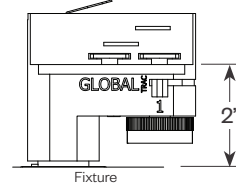
PROJECT:

TYPE:

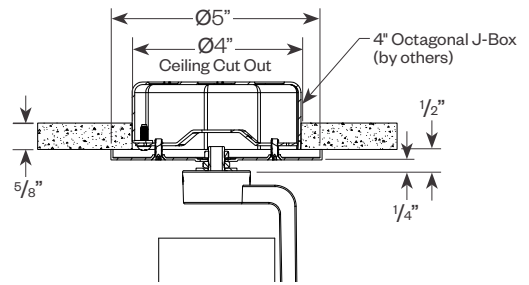
## Product Details



### TEK/TN3 Track Adapter



### Canopy Mount





# SPEQ-L Kicker Wall Wash

Large Track Head



<b>PROJECT:</b>	<b>TYPE:</b>
-----------------	--------------

## Dimming Compatibility

Amerlux® SPEQ® fixtures are compatible with all major dimming protocols prevalent in the United States. Please see below for general compatibilities and wiring diagrams. Amerlux recommends testing your unique dimming configuration as the exact full configuration (*Dimmer, Fixture Quantity, Voltage, etc*) may affect dimming performance.

**--- NOTE: INFORMATION BELOW IS FOR WIRED DIMMERS ONLY. FOR WIRELESS DIMMERS, CONSULT FACTORY ---**

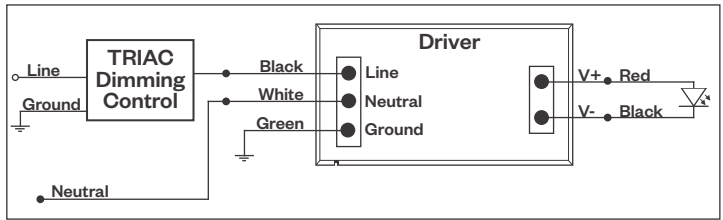
### TRIAC (Forward Phase) Dimming

Utilizes standard TRIAC dimmers that are in wide use in installations across the US. Best for retrofit applications where TRIAC dimmers are installed.

#### Notes:

- 120VAC or 277VAC\*
- Dims down to 5% light output (*most cases*)
- Consult Dimming manufacturer for installation instructions - **DO NOT SHARE NEUTRALS!**
- Must meet dimmer Minimum Load Requirements per dimming manufacturer

### TRIAC Wiring Diagram



Compatible Dimmers†:	
Wall Box (TRIAC 120VAC)	Central System
Lutron "Diva"	Lutron "GP" Panel
Lutron "Nova-T"	Lutron Grafik Eye QS
Lutron "Maestro"	
Lutron "Skylark"	

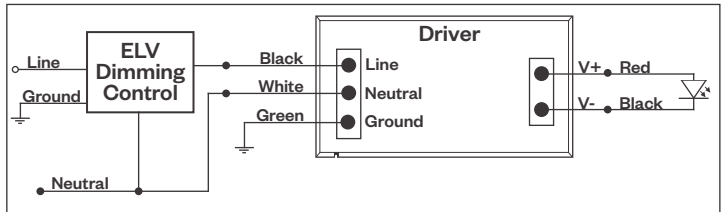
### ELV - Electronic Low Voltage (Reverse Phase) Dimming

Utilizes specialized "ELV" dimmers.

#### Notes:

- 120VAC or 277VAC\*
- Dims down to 5% light output (*most cases*)
- Consult Dimming manufacturer for installation instructions - **DO NOT SHARE NEUTRALS!**
- Must meet dimmer Minimum Load Requirements per dimming manufacturer

### ELV Wiring Diagram



Compatible Dimmers†:		
Wall Box (ELV 120VAC)	Wall Box (ELV 277VAC)	Central System
Lutron "Diva"	Leviton Revoir II AWSMT-E	Lutron "GP" Panel with PHPM-PA 120/277VAC
Lutron "Nova-T"		Lutron Grafik Eye QS with PHPM-PA 120/277VAC
Lutron "Maestro"		
Lutron "Skylark"		
Leviton "Surslide"		
Leviton "Vizio"		

#### Notes:

\* Driver is 277VAC dimmable with appropriate dimmer (*by others*). All provided wiring diagrams show 120VAC wiring colors and method. Please refer to 277VAC dimmer installation instructions for 277VAC wiring diagrams.

† The absence of a dimmer from the lists above does not imply incompatibility. Please consult factory for compatibility inquiries.