

# Pari S

Small

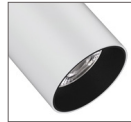
Track Head

## Features

Flexible modular design in a sleek and compact cylinder appearance with interchangeable TIR optics (15°, 24°, 38°, 60°) and comfort bezel.

## Product Overview

Type:	Track Accent & Display
Wattage:	15W
Output:	see performance chart below
Color Temp:	3000K, 3500K, 4000K
CRI:	90+ typ.
Dimming:	TRIAC & ELV (120VAC) - 5% Dim



Fixture with white finish

PROJECT:

TYPE:

## Fixture Summary *(see following pages for more information)*

### Performance Chart

Beam Spread	Delivered Lumens	LPW	CBCP	CCT	CRI
15°	1245	86.3	10230	3000K	90+
24°	1348	93.4	7927	3000K	90+
38°	1431	99	3755	3000K	90+
60°	988	68.5	1164	3000K	90+

*Data is based on 3000K, 90+ 120V IES files available on website.*

### Electrical Data

	15W	
	System Watts	Amps
120V	15	0.13

*Electronic constant current LED driver*

# Pari S

Small Track Head



PROJECT:

TYPE:

## Ordering Information

PARI-S	.	.	.	120	.	.	.	LE/TE	.
<b>1</b>	<b>2</b>	<b>3</b>	<b>4</b>	<b>5</b>	<b>6</b>	<b>7</b>	<b>8</b>		

- 1** Model  
PARI-S - small track head, 15W
- 2** Finish  
W - white  
B - black
- 3** Mounting Adapter  
(adapter finish will match housing & stem finish)  
TN1 - H-style, single circuit, 120V (not compatible with the GES70 Monopoint Kit)  
CT - J-style, single & dual circuit, 120V  
LOL - L-style, single circuit, 120V
- 4** Voltage  
120
- 5** Beam Spread  
15 - 15°  
24 - 24°  
38 - 38°  
60 - 60°
- 6** Color Temp and CRI  
309 - 3000K, 90+ CRI  
359 - 3500K, 90+ CRI  
409 - 4000K, 90+ CRI
- 7** Drivers  
LE/TE - TRIAC/ELV dimming, 5% dim
- 8** Options/Accessories  
HEX - hexcell louver

# Pari S

Small Track Head

## PROJECT:

## TYPE:

### Specifications

#### Application

Accent and display lighting for retail, supermarket, commercial & hospitality environments.

#### Construction

Die-cast and extruded aluminum construction  
Molded polycarbonate comfort bezel, matte black finish  
No exposed wiring  
Powder coat paint

#### Optical

TIR optics  
Beam Spreads: 15°, 24°, 38°, 60°

#### LED

Color Temp: 3000K, 3500K, 4000K  
CRI: 90+ typ.  
Binning: 3-step MacAdam ellipse  
Lumen Maintenance: >70% of initial lumens @ 50,000 hrs  
Lumen Output (3000K, 90+): up to 1430 lm

#### Electrical

Wattage: 15W  
Electronic constant current LED driver, 120V input

#### Driver

LE/TE - Leading Edge (Triac, Forward Phase) or Trailing Edge (ELV, Reverse Phase) autosensing driver dims down to 5% on most dimming systems.

*See dimming pages for more information.*

#### Finish

Powder coat paint, White or Black  
Comfort bezel is matte black

#### Mounting

Track mounting.  
Available adapters include H-Style, J-Style & L-Style

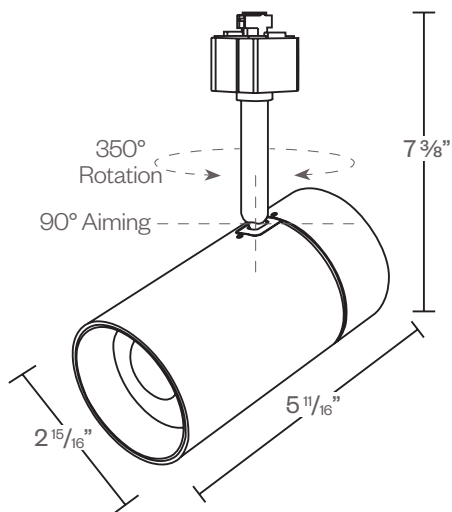
**Note: Track fixture mounting recommended only to horizontal mounted track.**

#### Certifications

ETL listed  
Intended for indoor use only.

#### Warranty

5 year limited warranty



**PROJECT:**

**TYPE:**

**FIXTURE DATA:**

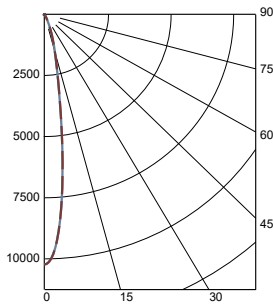
**MULTIPLYING FACTORS:**

CCT:	3000K, 90+	3500K, 90+	4000K, 90+
Factor:	1.0	1.06	1.11

Multiplying Factor is based on 3000K, 90+ 120V IES file on website.

**15W LED, 3000K, 90+**

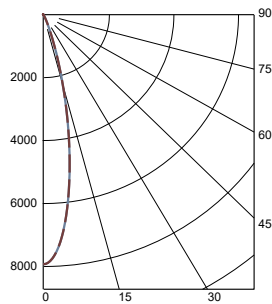
**15° Distribution**  
LTL14179583.01  
Lumens: 1245 lm



Candelas at Nadir

Deg	Candela
0	10230
5	7613
15	1522
25	287
35	68
45	28

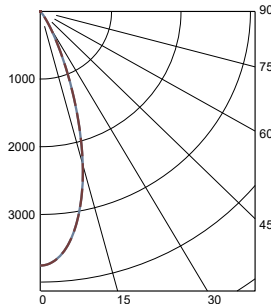
**24° Distribution**  
LTL14179583.02  
Lumens: 1348 lm



Candelas at Nadir

Deg	Candela
0	7927
5	6866
15	2108
25	226
35	47
45	21

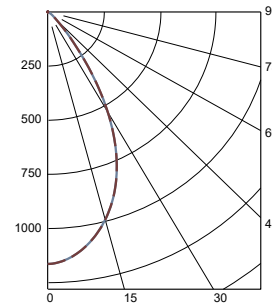
**38° Distribution**  
LTL14179583.03  
Lumens: 1431 lm



Candelas at Nadir

Deg	Candela
0	3755
5	3592
15	2338
25	744
35	126
45	23

**60° Distribution**  
LTL14179583.04  
Lumens: 988 lm



Candelas at Nadir

Deg	Candela
0	1164
5	1139
15	987
25	710
35	315
45	69

**APPLICATION DATA:**

**Notes and Definitions:**

Beam spread is to 50% center beam candlepower (CBCP).

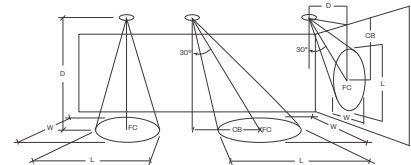
D=Distance to floor or wall.

FC=Footcandles on floor or wall at center beam aiming location.

L=Effective Visual Beam length in feet (50% of maximum footcandle level).

W=Effective Visual Beam width in feet (50% of maximum footcandle level).

CB=Distance across or down to center beam location.



	0° Aiming Angle Horizontal Footcandles				30° Aiming Angle Horizontal Footcandles					30° Aiming Angle Vertical Footcandles					60° Aiming Angle Vertical Footcandles				
	D	FC	L	W	D	FC	L	W	CB	D	FC	L	W	CB	D	FC	L	W	CB
15° Distribution	5.0'	409	1.3	1.3	5.0'	264	1.7	1.5	3.0	3.0'	154	3.0	1.5	5.0	3.0'	563	1.4	1.1	2.0
	7.5'	182	2.0	2.0	7.5'	119	2.6	2.3	4.0	4.0'	94	3.7	1.9	6.0	4.0'	400	1.5	1.3	2.0
	10.0'	102	2.8	2.8	10.0'	65	3.6	3.2	6.0	5.0'	59	4.7	2.6	7.0	5.0'	257	1.9	1.5	3.0
	12.5'	66	3.3	3.3	12.5'	44	4.3	3.7	7.0	6.0'	42	5.6	3.0	9.0	6.0'	178	2.3	1.7	3.0
24° Distribution	5.0'	317	1.8	1.8	5.0'	205	2.5	2.2	3.0	3.0'	145	3.2	1.8	4.0	3.0'	471	1.9	1.3	2.0
	7.5'	141	2.9	2.9	7.5'	95	3.6	3.2	4.0	4.0'	79	4.3	2.8	5.0	4.0'	332	1.9	1.6	2.0
	10.0'	80	3.7	3.7	10.0'	53	4.8	4.2	5.0	5.0'	53	5.2	3.2	7.0	5.0'	200	2.5	2.2	3.0
	12.5'	51	4.7	4.7	12.5'	34	6.0	5.4	7.0	6.0'	37	6.5	3.9	8.0	6.0'	148	2.9	2.6	3.0
38° Distribution	5.0'	151	3.0	3.0	5.0'	105	3.5	3.2	2.0	3.0'	92	3.4	2.7	3.0	3.0'	276	2.2	1.8	1.0
	7.5'	67	4.4	4.4	7.5'	47	5.2	4.9	3.0	4.0'	52	4.6	3.5	4.0	4.0'	166	2.9	2.7	1.0
	10.0'	38	5.8	5.8	10.0'	27	7.0	6.5	5.0	5.0'	33	5.7	4.4	5.0	5.0'	107	3.5	3.1	2.0
	12.5'	24	7.3	7.3	12.5'	17	8.7	8.1	6.0	6.0'	24	6.4	4.9	7.0	6.0'	74	4.2	3.9	3.0
60° Distribution	5.0'	47	4.5	4.5	5.0'	36	4.6	4.7	2.0	3.0'	43	3.3	3.4	2.0	3.0'	102	2.7	2.8	1.0
	7.5'	21	6.6	6.6	7.5'	16	6.9	7.0	3.0	4.0'	25	4.3	4.4	3.0	4.0'	57	3.6	3.7	1.0
	10.0'	12	8.8	8.8	10.0'	9	9.3	9.4	3.0	5.0'	16	5.4	5.5	4.0	5.0'	36	4.7	4.8	2.0
	12.5'	8	11.2	11.2	12.5'	6	11.7	11.8	4.0	6.0'	11	6.7	6.7	5.0	6.0'	25	5.5	5.5	2.0

**PROJECT:**

**TYPE:**

**DIMMING COMPATIBILITY:**

Amerlux® Pari fixtures are compatible with ELV and TRIAC dimming. Please see below for general compatibilities and wiring diagrams. Amerlux recommends testing your unique dimming configuration as the exact full configuration (Dimmer, Fixture Quantity, Voltage, etc) may affect dimming performance.

**--- NOTE: INFORMATION BELOW IS FOR WIRED DIMMERS ONLY. FOR WIRELESS DIMMERS, CONSULT FACTORY ---**

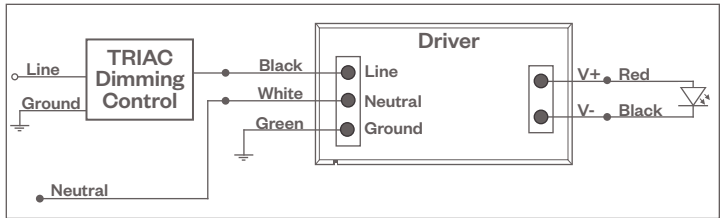
**TRIAC (Forward Phase) DIMMING (Standard)**

Utilizes “Standard” incandescent dimmers that are in wide use in installations across the US. Best for retrofit applications where TRIAC dimmers are installed.

**Notes:**

- 120VAC
- Dims down to 5% light output (most cases)
- Consult Dimming manufacturer for installation instructions - DO NOT SHARE NEUTRALS!
- Must meet dimmer Minimum Load Requirements per dimming manufacturer

**TRIAC Wiring Diagram**



**Compatible Dimmers†:**

**Wall Box** (Incandescent Style, Wattage as required)

- Lutron “Diva”
- Lutron “Nova-T”
- Lutron “Maestro”
- Lutron “Skylark”

**Central System**

- Lutron “GP” Panel
- Lutron Grafik Eye QS

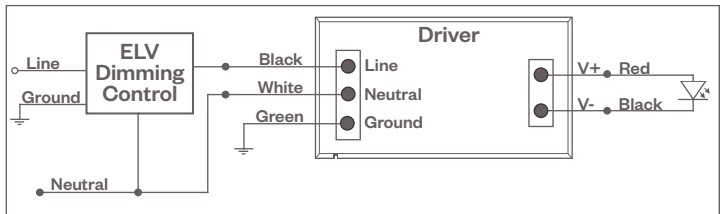
**ELV - Electronic Low Voltage (Reverse Phase) DIMMING (Standard)**

Utilizes specialized “ELV” dimmers.

**Notes:**

- 120VAC
- Dims down to 5% light output (most cases)
- Consult Dimming manufacturer for installation instructions - DO NOT SHARE NEUTRALS!
- Must meet dimmer Minimum Load Requirements

**ELV Wiring Diagram**



**Compatible Dimmers†:**

**Wall Box** (ELV Style)

- |                  |                    |
|------------------|--------------------|
| Lutron “Diva”    | Leviton “Surslide” |
| Lutron “Nova-T”  | Leviton “Vizio”    |
| Lutron “Maestro” |                    |
| Lutron “Skylark” |                    |

**Central System**

- Lutron “GP” Panel with PHPM-PA Interface
- Lutron Grafik Eye QS with PHPM-PA Interface