

Pari M

Medium

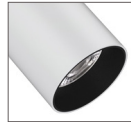
Track Head

Features

Flexible modular design in a sleek and compact cylinder appearance with interchangeable TIR optics (15°, 24° 38°, 60°) and comfort bezel.

Product Overview

Type: Track Accent & Display
Wattage: 25W
Output: see performance chart below
Color Temp: 3000K, 3500K, 4000K
CRI: 90+ typ.
Dimming: TRIAC & ELV (120VAC) - 5% Dim



Fixture with white finish

PROJECT:

TYPE:

Fixture Summary *(see following pages for more information)*

Performance Chart

Beam Spread	Delivered Lumens	LPW	CBCP	CCT	CRI
15°	1981	74	15330	3000K	90+
24°	1928	72.1	6870	3000K	90+
38°	2013	75.3	5373	3000K	90+
60°	2192	81.9	3009	3000K	90+

Data is based on 3000K, 90+ 120V IES files available on website.

Electrical Data

	25W	
	System Watts	Amps
120V	25	0.21

Electronic constant current LED driver

Pari M

Medium Track Head



PROJECT:

TYPE:

Ordering Information

PARI-M	.	.	.	120	.	.	.	LE/TE	.
1	2	3	4	5	6	7	8		

1 Model
PARI-M - medium track head, 25W

2 Finish
W - white
B - black

3 Mounting Adapter
(adapter finish will match housing & stem finish)
TN1 - H-style, single circuit, 120V (not compatible with the GES70 Monopoint Kit)
CT - J-style, single & dual circuit, 120V
LOL - L-style, single circuit, 120V

4 Voltage
120

5 Beam Spread
15 - 15°
24 - 24°
38 - 38°
60 - 60°

6 Color Temp and CRI
309 - 3000K, 90+ CRI
359 - 3500K, 90+ CRI
409 - 4000K, 90+ CRI

7 Drivers
LE/TE - TRIAC/ELV dimming, 5% dim

8 Options/Accessories
HEX - hexcell louver

Pari M

Medium Track Head

PROJECT:

TYPE:

Specifications

Application

Accent and display lighting for retail, supermarket, commercial & hospitality environments.

Construction

Die-cast and extruded aluminum construction
Molded polycarbonate comfort bezel, matte black finish
No exposed wiring
Powder coat paint

Optical

TIR optics
Beam Spreads: 15°, 24°, 38°, 60°

LED

Color Temp: 3000K, 3500K, 4000K
CRI: 90+ typ.
Binning: 3-step MacAdam ellipse
Lumen Maintenance: >70% of initial lumens @ 50,000 hrs
Lumen Output (3000K, 90+): up to 2200 lm

Electrical

Wattage: 25W
Electronic constant current LED driver, 120V input

Driver

LE/TE - Leading Edge (Triac, Forward Phase) or Trailing Edge (ELV, Reverse Phase) autosensing driver dims down to 5% on most dimming systems.

See dimming pages for more information.

Finish

Powder coat paint, White or Black
Comfort bezel is matte black

Mounting

Track mounting.
Available adapters include H-Style, J-Style & L-Style

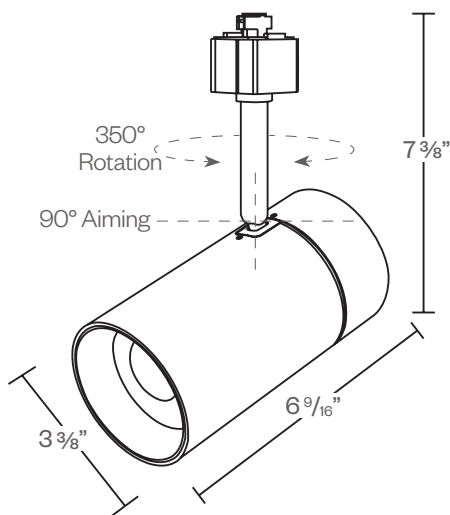
Note: Track fixture mounting recommended only to horizontal mounted track.

Certifications

ETL listed
Intended for indoor use only.

Warranty

5 year limited warranty



PROJECT:

TYPE:

FIXTURE DATA:

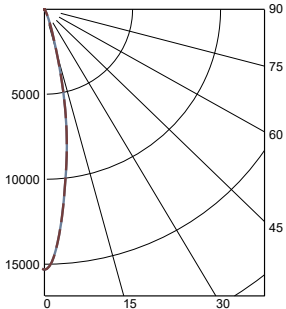
MULTIPLYING FACTORS:

CCT:	3000K, 90+	3500K, 90+	4000K, 90+
Factor:	1.0	1.06	1.11

Multiplying Factor is based on 3000K, 90+ 120V IES file on website.

25W LED, 3000K, 90+

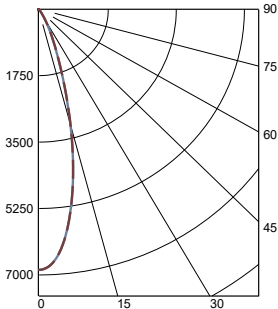
15° Distribution
LTL14179583.05
Lumens: 1981 lm



Candelas at Nadir

Deg	Candela
0	15330
5	11680
15	2419
25	287
35	79
45	51

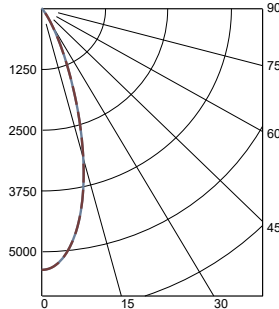
24° Distribution
LTL14179583.06
Lumens: 1928 lm



Candelas at Nadir

Deg	Candela
0	6870
5	6346
15	2947
25	751
35	177
45	66

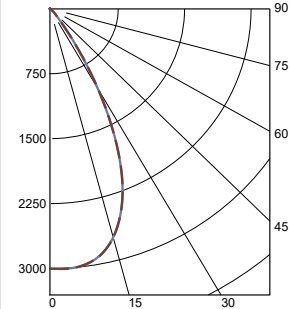
38° Distribution
LTL14179583.07
Lumens: 2013 lm



Candelas at Nadir

Deg	Candela
0	5373
5	5114
15	3182
25	1013
35	202
45	48

60° Distribution
LTL14179583.08
Lumens: 2192 lm



Candelas at Nadir

Deg	Candela
0	3003
5	3005
15	2714
25	1729
35	420
45	78

APPLICATION DATA:

Notes and Definitions:

Beam spread is to 50% center beam candlepower (CBCP).

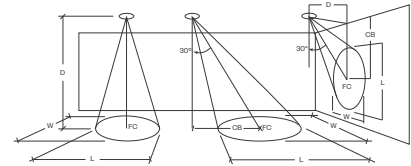
D=Distance to floor or wall.

FC=Footcandles on floor or wall at center beam aiming location.

L=Effective Visual Beam length in feet (50% of maximum footcandle level).

W=Effective Visual Beam width in feet (50% of maximum footcandle level).

CB=Distance across or down to center beam location.



Distribution	0° Aiming Angle Horizontal Footcandles				30° Aiming Angle Horizontal Footcandles					30° Aiming Angle Vertical Footcandles					60° Aiming Angle Vertical Footcandles				
	D	FC	L	W	D	FC	L	W	CB	D	FC	L	W	CB	D	FC	L	W	CB
15°	5.0'	693	1.4	1.4	5.0'	395	2.1	1.8	3.0	3.0'	234	3.1	1.8	4.0	3.0'	840	1.7	1.2	2.0
	7.5'	296	2.3	2.3	7.5'	177	3.1	2.7	4.0	4.0'	130	3.9	2.4	6.0	4.0'	596	1.7	1.4	2.0
	10.0'	163	3.0	3.0	10.0'	97	4.2	3.6	6.0	5.0'	88	5.0	3.0	7.0	5.0'	383	2.2	1.8	3.0
	12.5'	103	3.8	3.8	12.5'	65	5.0	4.5	7.0	6.0'	62	6.1	3.6	9.0	6.0'	265	2.6	2.2	3.0
24°	5.0'	275	2.4	2.4	5.0'	178	3.0	2.8	3.0	3.0'	141	3.5	2.4	4.0	3.0'	425	2.2	1.6	2.0
	7.5'	123	3.5	3.5	7.5'	84	4.3	3.9	4.0	4.0'	81	4.5	3.0	5.0	4.0'	298	2.3	2.1	2.0
	10.0'	69	4.7	4.7	10.0'	48	5.7	5.1	5.0	5.0'	52	5.7	3.8	6.0	5.0'	176	3.0	2.8	2.0
	12.5'	44	5.8	5.8	12.5'	31	7.2	6.5	6.0	6.0'	36	7.1	4.6	8.0	6.0'	133	3.4	3.1	3.0
38°	5.0'	244	2.7	2.7	5.0'	148	3.5	3.1	3.0	3.0'	126	3.5	2.7	3.0	3.0'	384	2.3	1.8	1.0
	7.5'	104	4.0	4.0	7.5'	66	5.2	4.7	3.0	4.0'	71	4.8	3.5	4.0	4.0'	237	2.8	2.6	2.0
	10.0'	58	5.5	5.5	10.0'	38	6.8	6.2	5.0	5.0'	47	5.8	4.3	6.0	5.0'	151	3.5	3.1	2.0
	12.5'	36	6.9	6.9	12.5'	25	8.5	7.8	6.0	6.0'	33	7.0	5.2	7.0	6.0'	106	4.1	3.7	3.0
60°	5.0'	121	4.3	4.3	5.0'	97	4.3	4.4	2.0	3.0'	108	3.2	3.2	3.0	3.0'	277	2.5	2.6	1.0
	7.5'	54	6.6	6.6	7.5'	44	6.5	6.7	2.0	4.0'	64	3.9	4.2	3.0	4.0'	154	3.4	3.5	1.0
	10.0'	30	8.7	8.7	10.0'	25	8.6	8.9	3.0	5.0'	42	4.9	5.1	4.0	5.0'	97	4.4	4.5	2.0
	12.5'	20	10.9	10.9	12.5'	16	10.9	11.2	4.0	6.0'	30	5.9	6.2	5.0	6.0'	70	5.1	5.3	2.0

Pari M

Medium Track Head

PROJECT:

TYPE:

DIMMING COMPATIBILITY:

Amerlux® Pari fixtures are compatible with ELV and TRIAC dimming. Please see below for general compatibilities and wiring diagrams. Amerlux recommends testing your unique dimming configuration as the exact full configuration (Dimmer, Fixture Quantity, Voltage, etc) may affect dimming performance.

--- NOTE: INFORMATION BELOW IS FOR WIRED DIMMERS ONLY. FOR WIRELESS DIMMERS, CONSULT FACTORY ---

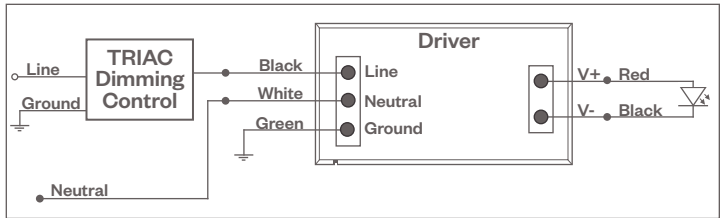
TRIAC (Forward Phase) DIMMING (Standard)

Utilizes “Standard” incandescent dimmers that are in wide use in installations across the US. Best for retrofit applications where TRIAC dimmers are installed.

Notes:

- 120VAC
- Dims down to 5% light output (most cases)
- Consult Dimming manufacturer for installation instructions - DO NOT SHARE NEUTRALS!
- Must meet dimmer Minimum Load Requirements per dimming manufacturer

TRIAC Wiring Diagram



Compatible Dimmers†:

Wall Box (Incandescent Style, Wattage as required)

- Lutron “Diva”
- Lutron “Nova-T”
- Lutron “Maestro”
- Lutron “Skylark”

Central System

- Lutron “GP” Panel
- Lutron Grafik Eye QS

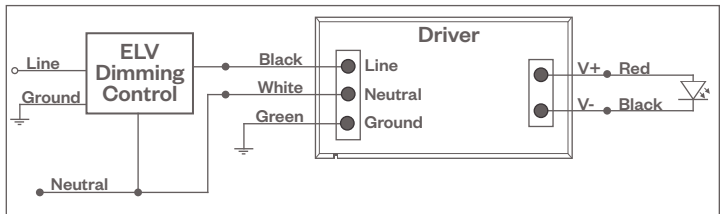
ELV - Electronic Low Voltage (Reverse Phase) DIMMING (Standard)

Utilizes specialized “ELV” dimmers.

Notes:

- 120VAC
- Dims down to 5% light output (most cases)
- Consult Dimming manufacturer for installation instructions - DO NOT SHARE NEUTRALS!
- Must meet dimmer Minimum Load Requirements

ELV Wiring Diagram



Compatible Dimmers†:

Wall Box (ELV Style)

- | | |
|------------------|--------------------|
| Lutron “Diva” | Leviton “Surslide” |
| Lutron “Nova-T” | Leviton “Vizio” |
| Lutron “Maestro” | |
| Lutron “Skylark” | |

Central System

- Lutron “GP” Panel with PHPM-PA Interface
- Lutron Grafik Eye QS with PHPM-PA Interface