

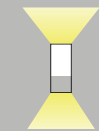
# Rook® 250 Mini

2.5" Mini Round Pendant  
Frame Mount  
Direct/Indirect

Quick Reference: RK250MRDI-F



(Remote Driver)



Direct/Indirect

## Features

The Rook 250 Mini Frame-Mount offers remote drivers in the most convenient location: above each fixture. The housing allows for more driver options, single or dual circuit control and accommodates EM battery packs. The Frame Mount installation method is perfect for a trimless, clean and minimal aesthetic. Just under 4.5" in height, this small round pendant maximizes a 2.5" aperture with several performance outputs and finishes to stir and grab attention.

## Product Overview

- Type: Round Pendant-Frame Mount, Direct/Indirect, Frame Mounted Driver
- Wattage: Direct 6W, 8W, 10W, 12W  
Indirect 10W
- Color Temp: 2700K, 3000K, 3500K, 4000K
- CRI: 80+ typ. or 90+ typ.
- Dimming: TRIAC & ELV (120V/277V) - 5% Dim  
0-10V (120V/277V) - 1% Dim  
Lutron Hi-lume EcoSystem Premier 0.1% dim with soft on & fade to black (consult factory for availability)  
DALI - DALI dimming, 1% dim  
PoE - power over ethernet, consult factory

## PROJECT:

## TYPE:

## Performance Chart

Direct		Indirect		Total	Total		
Watts	Lumens	Watts	Lumens	Lumens	LPW	CCT	CRI
6	643	10	540	1183	73.9	3000K	80+
8	845	10	540	1385	76.9	3000K	80+
10	1028	10	540	1568	78.4	3000K	80+
12	1212	10	540	1752	79.6	3000K	80+

Data is based on 3000K, 80+ IES files available on website

## Electrical Data

	16W		18W		20W		22W	
	Watts	Amps	Watts	Amps	Watts	Amps	Watts	Amps
120V	16	0.13	18	0.15	20	0.17	22	0.18
277V	16	0.06	18	0.07	20	0.07	22	0.08

Electronic constant current LED driver

Electronic constant current LED driver



# Rook® 250 Mini

2.5" Mini Round Pendant-Frame Mount, Direct/Indirect



## PROJECT:

## TYPE:

### Frame Ordering Information



**RK250MRDI-NC** . . . . . **10** . **120-277** . . . . .

**1**      **2**      **3**      **4**      **5**      **6**      **7**

- |   |  |
|---|--|
| <p><b>1</b> <u>Model</u><br/><b>RK250MRDI-NC</b> (New Construction)</p> <p><b>2</b> <u>Style</u><br/><b>T</b> - trimmed (canopy)<br/><b>TL</b> - trimless (flush plate)</p> <p><b>3</b> <u>Wattage - Direct</u> (lumens delivered @ 83 CRI/30K/55° beam)<br/><b>6</b> - 6W (643 lm)<br/><b>8</b> - 8W (845 lm)<br/><b>10</b> - 10W (1028 lm)<br/><b>12</b> - 12W (1212 lm)</p> <p><b>4</b> <u>Wattage - Indirect</u> (lumens delivered @ 80 CRI/30K/105° beam)<br/><b>10</b> - 10W (544 lm)</p> | <p><b>5</b> <u>Voltage</u><br/><b>120-277</b> - 120-277V</p> <p><b>6</b> <u>Driver</u><br/><b>LE/TE</b> - TRIAC/ELV dimming, 5% dim<br/><b>0-10V</b> - 0-10V dimming, 1% dim<br/><b>HILUME-P-ECO</b> - Lutron Hi-lume EcoSystem Premier 0.1% dim with soft on &amp; fade to black (consult factory for availability)<br/><b>DALI</b> - DALI dimming, 1% dim<br/><b>POE</b> - PoE consult factory</p> <p><b>7</b> <u>Options</u><br/><b>EM</b> - emergency battery pack with remote test switch<br/><b>HB49</b> - hanger bars from min 29" to max 49"</p> |
|---|--|

### Fixture Ordering Information



**RK250MRDI-F** . . . . . **105** . . . . .

**1**      **2**      **3**      **4**      **5**      **6**      **7**      **8**      **9**      **10**      **11**

- |  |   |
|--|---|
| <p><b>1</b> <u>Fixture Model</u><br/><b>RK250MRDI-F</b> - mini round direct/indirect, frame mount</p> <p><b>2</b> <u>Housing Finish</u><br/><b>MW</b> - matte white<br/><b>MB</b> - matte black<br/><b>SLV</b> - matte silver<br/>_____ - custom RAL finish</p> <p><b>3</b> <u>Style</u><br/><b>T</b> - trimmed (canopy)<br/><b>TL</b> - trimless (flush plate)</p> <p><b>4</b> <u>Suspension</u><br/>Cord (nominal overall length, field adjustable):<br/><b>C4</b> - cord, 4'<br/><b>C8</b> - cord, 8'<br/>Stem (nominal overall length, stems can be field cuttable):<br/><b>RS4</b> - rigid stem, 4'<br/><b>RS8</b> - rigid stem, 8'</p> <p><b>5</b> <u>Mounting/Suspension Finish</u><br/><b>MW</b> - matte white<br/><b>MB</b> - matte black<br/><b>SLV</b> - matte silver</p> <p><b>6</b> <u>Trim Finish</u><br/><b>MW</b> - matte white<br/><b>MB</b> - matte black<br/><b>SLV</b> - matte silver<br/>_____ - custom RAL finish</p> <p><b>7</b> <u>Beam Spreads - Direct</u><br/><b>30</b> - 30°<br/><b>35</b> - 35°<br/><b>55</b> - 55°</p> | <p><b>8</b> <u>Beam Spreads - Indirect</u><br/><b>105</b> - 105°</p> <p><b>9</b> <u>Color Temp and CRI - Direct</u><br/><b>27</b> - 2700K, 80+<br/><b>30</b> - 3000K, 80+<br/><b>35</b> - 3500K, 80+<br/><b>40</b> - 4000K, 80+<br/><b>279</b> - 2700K, 90+<br/><b>309</b> - 3000K, 90+<br/><b>359</b> - 3500K, 90+<br/><b>409</b> - 4000K, 90+</p> <p><b>10</b> <u>Color Temp and CRI - Indirect</u><br/><b>27</b> - 2700K, 80+<br/><b>30</b> - 3000K, 80+<br/><b>35</b> - 3500K, 80+<br/><b>40</b> - 4000K, 80+<br/><b>279</b> - 2700K, 90+<br/><b>309</b> - 3000K, 90+<br/><b>359</b> - 3500K, 90+<br/><b>409</b> - 4000K, 90+</p> <p><b>11</b> <u>Options</u><br/>Glare Control (can only take one):<br/><b>SOL</b> - solite lens<br/><b>HEX</b> - hexcell louver<br/><br/>Decorative:<br/><b>GDC*</b> - 1/2" glow lens, direct, clear<br/><b>GDF*</b> - 1/2" glow lens, direct, frosted<br/><b>GIC*</b> - 1/2" glow lens, indirect, clear<br/><b>GIF*</b> - 1/2" glow lens, indirect, frosted<br/>*Custom lengths available, consult factory<br/>*Consult factory for availability</p> |
|--|---|

# Rook® 250 Mini

2.5" Mini Round Pendant-Frame Mount, Direct/Indirect



## PROJECT:

## TYPE:

### Specifications

#### Application

Retail and commercial ambient/task lighting

#### Construction

- 20 ga. galvanized steel frame
- 18 ga. galvanized steel splice housing and hanger brackets
- Cast aluminum plaster frame with perforated face (for trimless version only)
- Extruded aluminum pendant housing
- Die-cast trim

#### Optical

- Direct Beam Spreads: 30°, 35°, 55°
- Indirect Beam Spreads: 105°
- Optional Glow Lens - 1/2" acrylic glow lens (clear or frosted)

#### LED

- Color Temp Options: 2700K, 3000K, 3500K, 4000K
- CRI: 80+ typ. or 90+ typ.
- R9 Values: 11 (83 CRI), 55 (92 CRI)
- Binning: 3 MacAdam (SDCM)
- Life: 50,000+ hrs, > 70% of initial lumens at 50,000 hrs

#### Electrical

- Wattage: Direct: 6W, 8W, 10W, 12W; Indirect: 10W
- Electronic constant current LED driver, 120V-277V input
- Fixture is 2 circuit by default, can wired as 1 or 2 circuit in the field.

**This product complies with IEEE C62.41 for surge endurance up to 2.5KV. Amerlux® recommends using additional surge protection with this unit (supplied by others), surge and over voltage damage is not covered under warranty.**

#### Drivers

- LE/TE - Leading Edge, TRIAC, forward phase/Trailing Edge, ELV, reverse phase; 5% dim
- 0-10V dimming, 5% dim
- DALI dimming, 1% dim
- Lutron Hi-lume EcoSystem Premier 0.1% dim with soft on & fade to black (consult factory for availability)
- PoE consult factory
- See pages 6-8 for more dimming information

#### Finish

- Powder coat paint
- Consult factory for custom finishes

#### Mounting

- 26" Hanger bars included
- Optional **HB49** - hanger bars from min 29" to max 49" available

#### Trimmed Fixture:

For use in grid or sheetrock ceilings, 5/8" - 2" standard

#### Trimless Fixture:

For use in sheetrock ceilings, max ceiling thickness 5/8"

#### Emergency Battery Pack (EM)

- Powers fixture at 5.1 watts (approx. 400 Lm) for 90 minutes (not for use with REM version)

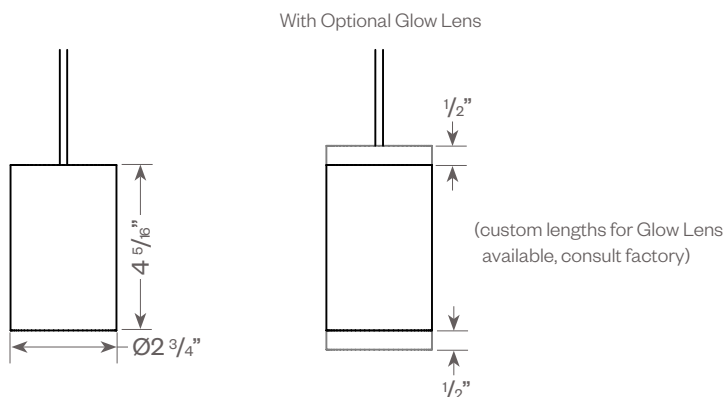
#### Certifications

- CSA tested to UL standards
- Indoor use only
- Damp location

#### Warranty

- 5 year limited warranty

## RK250MRD



# Rook® 250 Mini

2.5" Mini Round Pendant-Frame Mount, Direct/Indirect

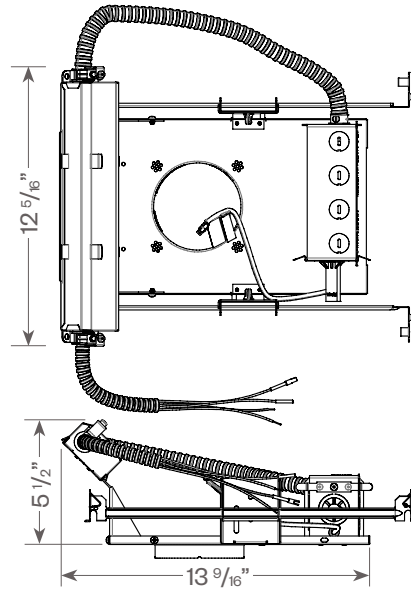
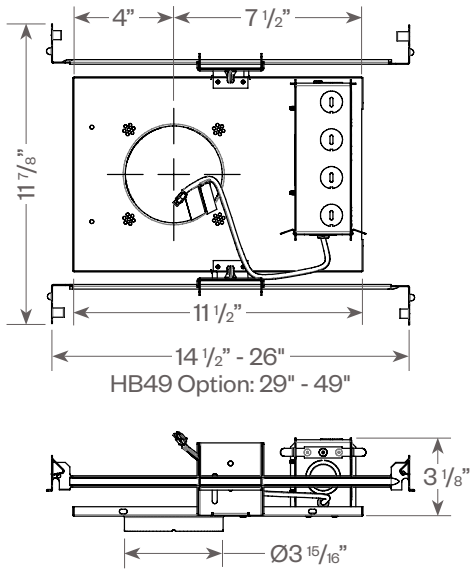


**PROJECT:**

**TYPE:**

## RK250MRD FRAME

With Emergency Battery Pack

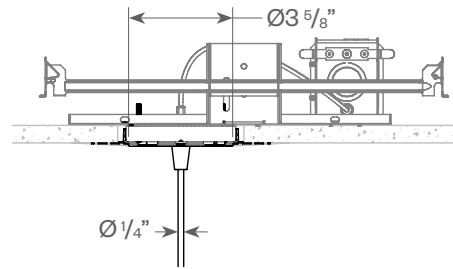
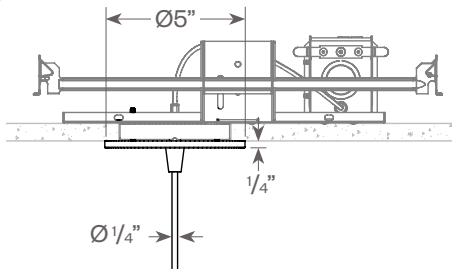


## MOUNTING OPTIONS

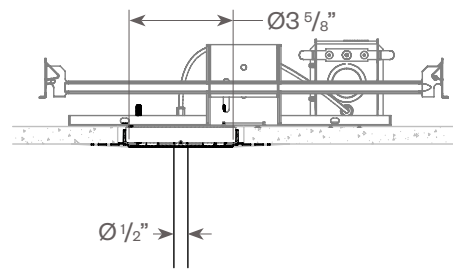
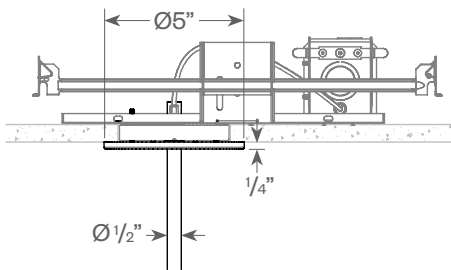
### Trimmed

### Trimless

Cord



Rigid Stem



# Rook® 250 Mini

2.5" Mini Round Pendant-Frame Mount, Direct/Indirect



## PROJECT:

## TYPE:

### FIXTURE DATA:

#### MULTIPLYING FACTORS FOR DIRECT PORTION:

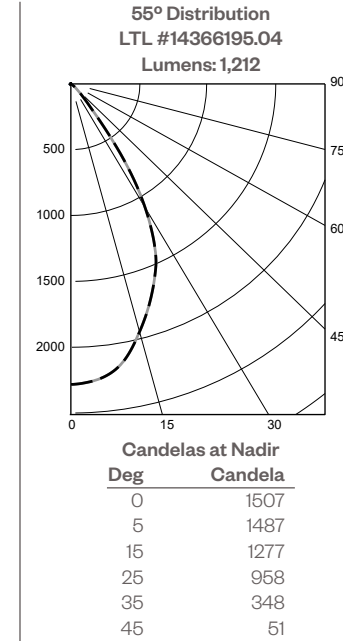
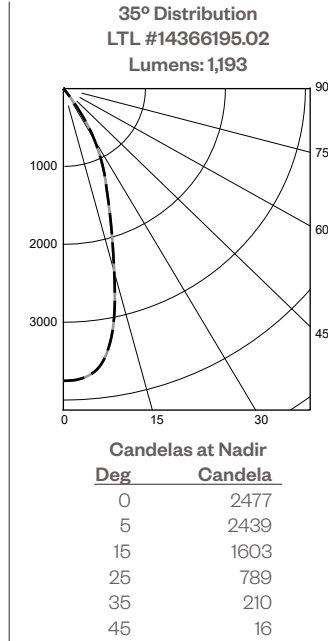
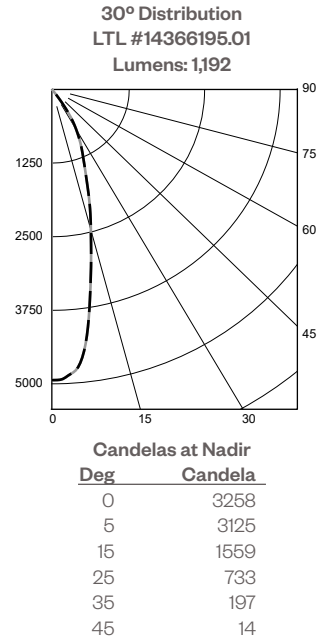
Wattage:	6W	8W	10W	12W	20W*
Factor:	0.35	0.46	0.56	0.66	1.0

\* Multiplying factors based on an IES 20W tested fixture. 20W is not available for this fixture type.

CCT:	2700K, 80+	3000K, 80+	3500K, 80+	4000K, 80+	2700K, 90+	3000K, 90+	3500K, 90+	4000K, 90+
Factor:	0.96	1.0	1.02	1.04	0.80	0.83	0.87	0.90

Multiplying Factor is based on 3000K, 80+ 120V IES file on website.

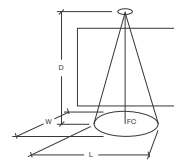
### 12W LED, 3000K, 80+, Direct



### Application Data:

#### Notes and Definitions:

Beam spread is to 50% center beam candlepower (CBCP).  
**D**=Distance to floor or wall.  
**FC**=Footcandles on floor or wall at center beam aiming location.  
**L**=Effective Visual Beam length in feet (50% of maximum footcandle level).  
**W**=Effective Visual Beam width in feet (50% of maximum footcandle level).  
**CB**=Distance across or down to center beam location.



0° Aiming Angle  
Horizontal  
Footcandles

**30° Distribution**

D	FC	L	W
5.0'	112	2.9	2.9
7.5'	55	3.8	3.8
10.0'	32	5.0	5.0
12.5'	21	6.1	6.1

0° Aiming Angle  
Horizontal  
Footcandles

**35° Distribution**

D	FC	L	W
5.0'	92	3.2	3.2
7.5'	43	4.8	4.8
10.0'	24	6.2	6.2
12.5'	16	7.6	7.6

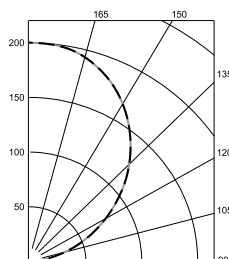
0° Aiming Angle  
Horizontal  
Footcandles

**55° Distribution**

D	FC	L	W
5.0'	57	4.6	4.6
7.5'	26	6.6	6.6
10.0'	15	9.0	9.0
12.5'	10	11.4	11.4

### 10W LED, 3000K, 80+, Indirect

**105° Distribution**  
LTL #14271976.09



#### ZONAL LUMEN SUMMARY

Zone	Lumens	%Fixt
0-40	0	0.0
0-60	0	0.0
0-90	0	0.0
90-180	544	100.0

Efficacy = 52 Lumens/Watt

# Rook® 250 Mini

2.5" Mini Round Pendant-Frame Mount, Direct/Indirect



## PROJECT:

## TYPE:

### DIMMING COMPATIBILITY:

Amerlux® Rook fixtures are compatible with all major dimming protocols prevalent in the United States. Please see below for general compatibilities and wiring diagrams. Amerlux recommends testing your unique dimming configuration as the exact full configuration (Dimmer, Fixture Quantity, Voltage, etc) may affect dimming performance.

**--- NOTE: INFORMATION BELOW IS FOR WIRED DIMMERS ONLY. FOR WIRELESS DIMMERS, CONSULT FACTORY ---**

### TRIAC (Forward Phase) DIMMING (Standard)

Utilizes standard TRIAC dimmers that are in wide use in installations across the US. Best for retrofit applications where TRIAC dimmers are installed.

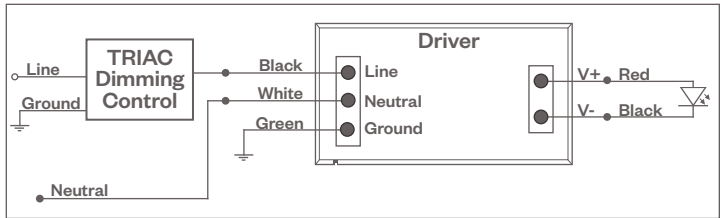
#### Notes:

- 120VAC or 277VAC\*
- Dims down to 5% light output (most cases)
- Consult Dimming manufacturer for installation instructions - DO NOT SHARE NEUTRALS!
- Must meet dimmer Minimum Load Requirements per dimming manufacturer

#### Compatible Dimmers†:

Wall Box (TRIAC 120VAC)	Central System
Lutron "Diva"	Lutron "GP" Panel
Lutron "Nova-T"	Lutron Grafik Eye QS
Lutron "Maestro"	
Lutron "Skylark"	

TRIAC Wiring Diagram



### ELV - Electronic Low Voltage (Reverse Phase) DIMMING (Standard)

Utilizes specialized "ELV" dimmers.

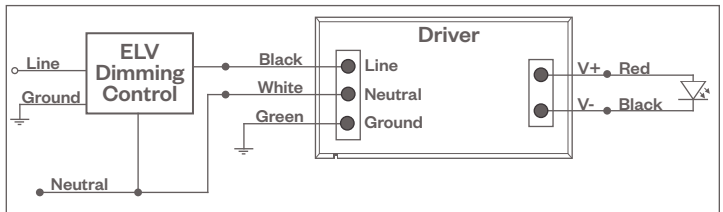
#### Notes:

- 120VAC or 277VAC\*
- Dims down to 5% light output (most cases)
- Consult Dimming manufacturer for installation instructions - DO NOT SHARE NEUTRALS!
- Must meet dimmer Minimum Load Requirements

#### Compatible Dimmers†:

Wall Box (ELV 120VAC)	Wall Box (ELV 277VAC)	Central System
Lutron "Diva"	Leviton Revoir II AWSMT-E	Lutron "GP" Panel with PHPM-PA 120/277VAC
Lutron "Nova-T"		Lutron Grafik Eye QS with PHPM-PA 120/277VAC
Lutron "Maestro"		
Lutron "Skylark"		
Leviton "Surslide"		
Leviton "Vizio"		

ELV Wiring Diagram



#### Notes:

- \* Driver is 277VAC dimmable with appropriate dimmer (by others). All provided wiring diagrams show 120VAC wiring colors and method. Please refer to 277VAC dimmer manufacturer installation instructions for 277VAC wiring diagrams.
- † The absence of a dimmer from the lists above does not imply incompatibility. Please consult factory for compatibility inquiries.

# Rook® 250 Mini

2.5" Mini Round Pendant-Frame Mount, Direct/Indirect



## PROJECT:

## TYPE:

### DIMMING COMPATIBILITY:

Amerlux® Rook fixtures are compatible with all major dimming protocols prevalent in the United States. Please see below for general compatibilities and wiring diagrams. Amerlux recommends testing your unique dimming configuration as the exact full configuration (Dimmer, Fixture Quantity, Voltage, etc) may affect dimming performance.

**--- NOTE: INFORMATION BELOW IS FOR WIRED DIMMERS ONLY. FOR WIRELESS DIMMERS, CONSULT FACTORY ---**

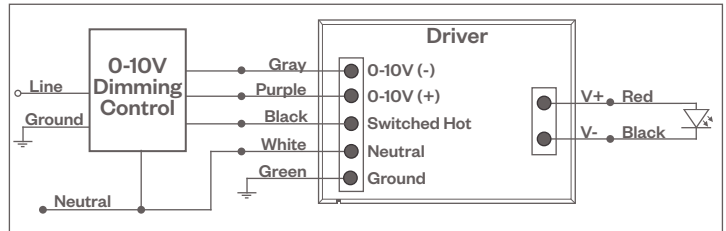
### 0-10V DIMMING

Integrates into a variety of building management and daylighting controls

#### Notes:

- 120VAC or 277VAC\*
- Dims down to 1% light output
- Requires interface to turn off power to driver
- Consult Dimming manufacturer for installation instructions - DO NOT SHARE NEUTRALS!

0-10V Wiring Diagram



#### Compatible Dimmers†:

##### Wall Box

Lutron "Diva" - DVSTV | Leviton Renoir II 0-10V

##### Central System

Lutron Grafik Eye with GRX-TV1 Interface

### LUTRON P-SERIES / ECOSYSTEM

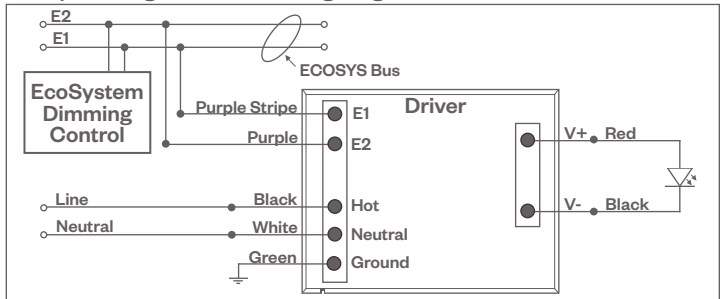
Integrates into Lutron EcoSystem building management

#### Notes:

- 120- 277VAC\*
- Dims down to 1% light output
- EcoSystem Control
- Consult Dimming manufacturer for installation instructions - DO NOT SHARE NEUTRALS!

HILUME-P-ECO

EcoSystem Digital Control Wiring Diagram



#### Compatible Dimmers†:

##### Lutron ECO System

Pow Pak Dimming Modules  
Energi Savr Node  
Grafik Eye QS/Homeworks  
QS Control Unit  
Quantum Hub  
Homeworks QS/My Room

##### Central System

Lutron EcoSystem compatible controls

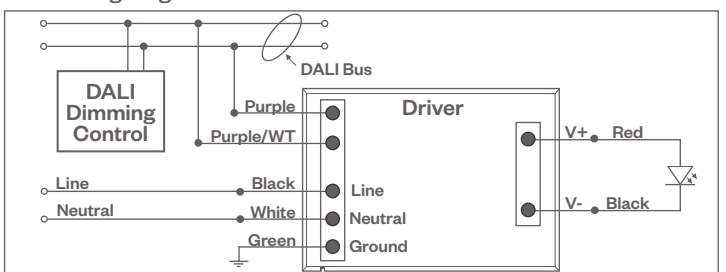
### DALI DIMMING

Digital control protocol allows individual fixture control

#### Notes:

- 120-277VAC\*
- Dims down to 1% light output in most cases

DALI Wiring Diagram



#### Compatible Dimmers†:

##### Wall Box (3-Wire Fluorescent)

Leviton CD250 Controller

##### Central System

Dynalite  
Fifth Light

#### Notes:

\* Driver is 277VAC dimmable with appropriate dimmer (by others). All provided wiring diagrams show 120VAC wiring colors and method. Please refer to 277VAC dimmer manufacturer installation instructions for 277VAC wiring diagrams.

† The absence of a dimmer from the lists above does not imply incompatibility. Please consult factory for compatibility inquiries.

# Rook® 250 Mini

2.5" Mini Round Pendant-Frame Mount, Direct/Indirect



PROJECT:

TYPE:

## EMERGENCY DIMMING

### Wiring Diagram

