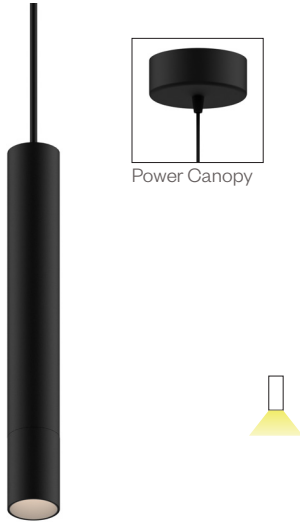


1" Pendant Mount Cylinder with Power Canopy



Features

The FINCH family of cylinders with a 1" aperture, features exceptional output, flexibility, and a broad range of configurations to provide discreet, quality illumination, while integrating into the architecture.

The FINCH pendant mount cylinder with power canopy allows for the use of an integral driver inside the canopy and is available in lengths from 9" to 18", up to 1500 lm output and has a choice of beveled front door options for additional shielding or a glow lens for an extra flair. Use alone or in a composition to create a unique design.

Product Overview

- Type: Pendant Mount, Direct
- Wattage: 6W, 8W, 10W, 12W, 15W, 17W, 20W
- Color Temp: 2400K, 2700K, 3000K, 3500K, 4000K
- CRI: 80+ & 90+ typ.
- Dimming: 0-10V, DALI, TRIAC/ELV, Lutron EcoSystem

PROJECT:

TYPE:

Performance Data

Watts	Lumens	LPW	CCT	CRI
6	643	102.1	3000K	80+
8	787	93.7	3000K	80+
10	927	88.3	3000K	80+
12	1065	83.9	3000K	80+
15	1200	79.9	3000K	80+
17	1331	76.9	3000K	80+
20	1459	73.9	3000K	80+

Data is based on 20W, flood optic, standard bevel, 3000K, 80+ 120V IES file available on website. Consult ordering information and data for other wattages & beam spreads.

Electrical Data

	6W		8W		10W		12W	
	Watts	Amps	Watts	Amps	Watts	Amps	Watts	Amps
120V	6.3	0.054	8.4	0.071	10.5	0.088	12.7	0.107
277V	6.7	0.034	8.6	0.038	10.7	0.044	12.8	0.051
	15W		17W		20W			
	Watts	Amps	Watts	Amps	Watts	Amps		
120V	14.9	0.125	17.3	0.144	19.7	0.164		
277V	15	0.058	17.3	0.065	19.6	0.073		

Electronic constant current LED driver

PROJECT:

TYPE:

To Order, please specify both the light fixture and remote driver.
Fixture Example: FIN12-PMPC.10.309.WF.BT.GLD.DB.PC.C8.LE/TE.SOL

Ordering Information

1	2	3	4	5	6	7	8	9	10	11
1 Model	2 Wattage	3 Color Temp and CRI	4 Beam Spread	5 Body Finish						
FIN9-PMPC 9"	6 6W (643 lm)	30 3000K, 80+	SP spot 15°	WT white texture						
FIN12-PMPC 12"	8 8W (787 lm)	35 3500K, 80+	FL flood 28°	BT black texture						
FIN18-PMPC 18"	10 10W (927 lm)	40 4000K, 80+	WF wide flood 35°	SLV matte silver						
	12 12W (1065 lm)	249 2400K, 90+	VWF very wide flood 50°	BRZ bronze						
	15 15W (1200 lm)	279 2700K, 90+		DBZ dark bronze						
	17 17W (1331 lm)	309 3000K, 90+		<i>For custom RAL finish, consult factory</i>						
	20 20W (1459 lm)	359 3500K, 90+								
		409 4000K, 90+								
					6 Bevel Finish	7 Door Style	8 Mounting			
					MW matte white	SB standard bevel (1/4" recess)	PC power canopy (2" deep)			
					MB matte black	DB deep bevel (5/8" recess)	PCDC power conduit canopy (3-1/2" deep)			
					SLV matte silver	GLOW frosted glow lens (1/2" drop)				
					BRZ bronze					
					DBZ dark bronze					
					GLD gold					
					<i>For custom RAL finish, consult factory.</i>					
					<i>Omit from nomenclature when ordering</i>					
					<i>GLOW door style.</i>					
				9 Suspension	10 Driver		11 Accessories			
				Cord (cord is field outtable)	Stem (stem is field outtable)	0-10V 0-10V dimming, 1%, 120/277VAC	SOL solite lens			
				C4 cord, 4'	RS3 rigid stem, 3'	DALI DALI dimming, 1%, 120/277VAC	HEX hexcell louver			
				C8 cord, 8'		LE/TE TRIAC/ELV dimming, 5%, 120/277VAC	LS linear spread lens			
				<i>Cord suspension will be black for bronze or dark bronze finishes</i>		HILUME-P-ECO - Lutron Hi-lume EcoSystem Premier 0.1% dim with soft on & fade to black, 120/277VAC (consult factory for availability)				

PROJECT:

TYPE:

Specifications

Application

Retail, commercial and hospitality ambient/task lighting

Construction

Extruded aluminum precision machined body, door & heatsink

Optical

TIR optics

Beam Spreads: Spot 15°, Flood 28°, Wide Flood 35°,
Very Wide Flood 50°

Linear Spread Lens (LS) recommended for use with Spot beam spread for maximum linear effect.

LED

Color Temp: 2400K, 2700K, 3000K, 3500K, 4000K

CRI: 80+ & 90+ typ.

R9 Values: 11 (83 CRI), 55 (92 CRI)

Binning: 3 MacAdam (SDCM)

Life: 50,000+ hrs, > 70% of initial lumens at 50,000 hrs

Electrical

This product complies with IEEE C62.41 for surge endurance up to 2.5KV. Amerlux® recommends using additional surge protection with this unit (supplied by others), surge and over voltage damage is not covered under warranty.

Finish

Powder coat paint

Consult factory for custom finishes

Mounting

Pendant mount

Certifications

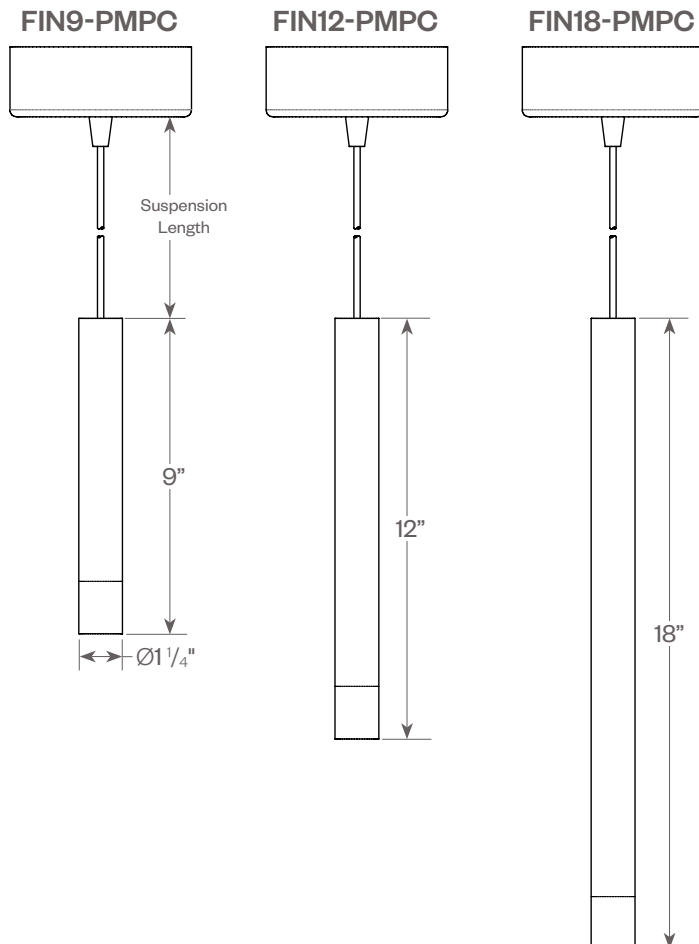
ETL listed

Indoor use only

Damp location

Warranty

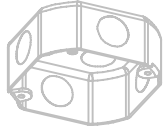
5 year limited warranty



PROJECT:

TYPE:

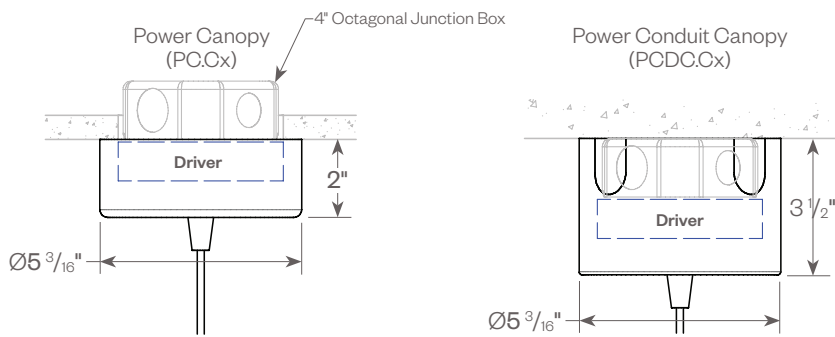
Mounting Requirements



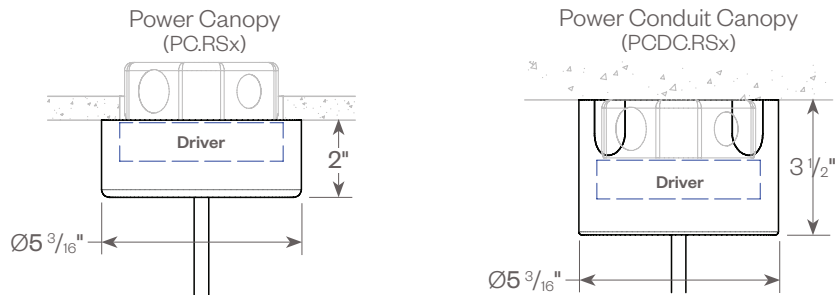
All Mounts Require 4" Octagonal Junction Box (by others)

Mounting/Suspension Options

Cord Suspension



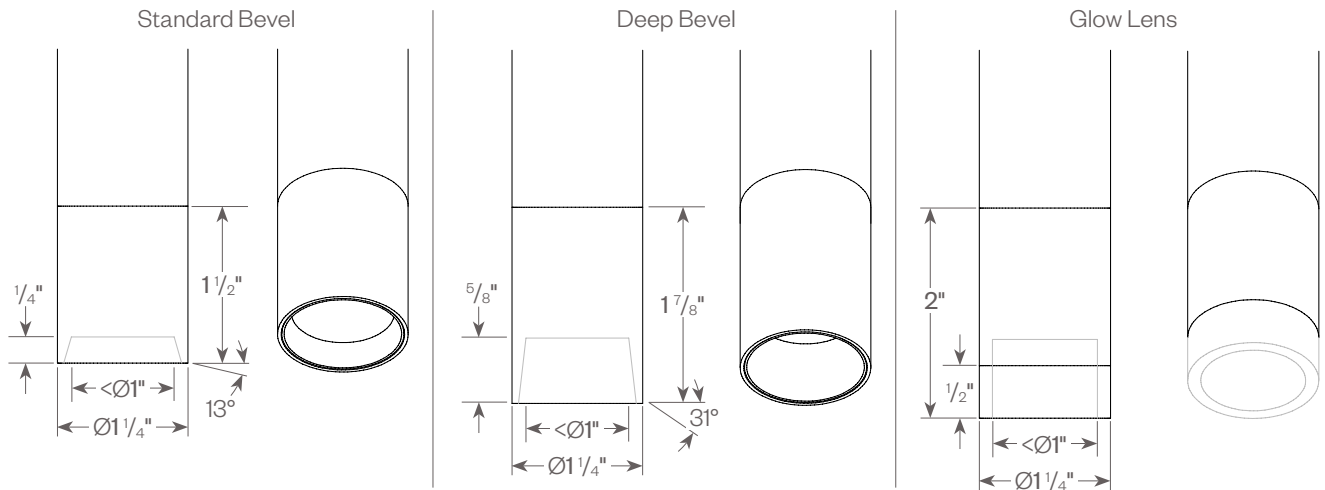
Rigid Stem Suspension



PROJECT:

TYPE:

Door Styles



Finish Options

Powder coat paint.
Consult factory for custom finishes.



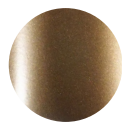
Matte Black



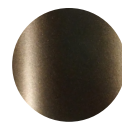
Matte White



Matte Silver



Bronze



Dark Bronze



White Texture



Black Texture



Gold

Available for Bevel Finish only

PROJECT:

TYPE:

Fixture Data

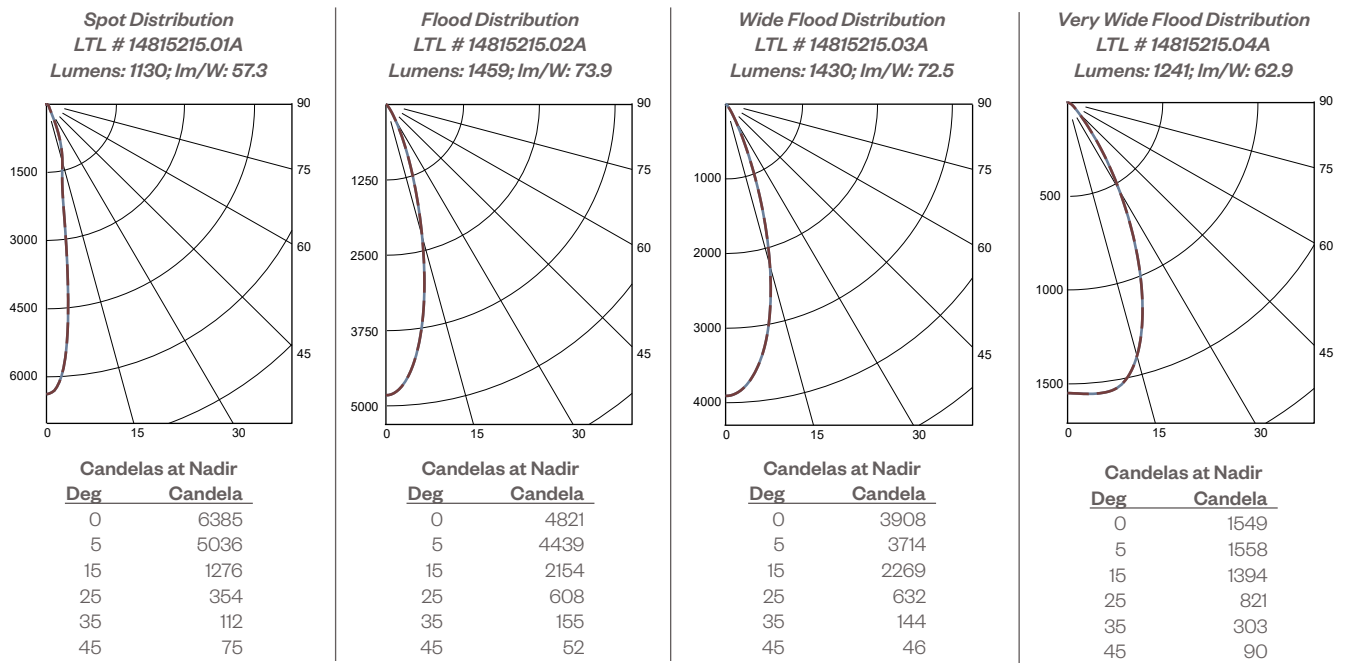
MULTIPLYING FACTORS:

Wattage:	6W	8W	10W	12W	15W	17W	20W
Factor:	0.44	0.54	0.64	0.73	0.82	0.91	1.0

CCT:	3000K, 80+	3500K, 80+	4000K, 80+	2400K, 90+	2700K, 90+	3000K, 90+	3500K, 90+	4000K, 90+
Factor:	1.0	1.04	1.06	0.76	0.83	0.88	0.92	0.93

Multiplying Factor is based on 20W, 3000K, 80+ 120V IES file on website.

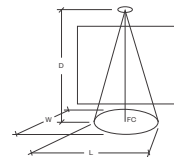
20W, Standard Bevel, 3000K, 80+



Application Data:

Notes and Definitions:

Beam spread is to 50% center beam candlepower (CBCP).
D=Distance to floor or wall.
FC=Footcandles on floor or wall at center beam aiming location.
L=Effective Visual Beam length in feet (50% of maximum footcandle level).
W=Effective Visual Beam width in feet (50% of maximum footcandle level).
CB=Distance across or down to center beam location.



Spot

0° Aiming Angle
Horizontal
Footcandles

D	FC	L	W
5.0'	158	1.9	1.9
7.5'	91	2.5	2.5
10.0'	57	3.0	3.0
12.5'	38	3.5	3.5

Flood

0° Aiming Angle
Horizontal
Footcandles

D	FC	L	W
5.0'	178	2.6	2.6
7.5'	85	3.6	3.6
10.0'	49	4.7	4.7
12.5'	31	5.8	5.8

Wide Flood

0° Aiming Angle
Horizontal
Footcandles

D	FC	L	W
5.0'	138	3.0	3.0
7.5'	66	4.3	4.3
10.0'	38	5.6	5.6
12.5'	25	7.0	7.0

Very Wide Flood

0° Aiming Angle
Horizontal
Footcandles

D	FC	L	W
5.0'	61	4.2	4.2
7.5'	27	6.3	6.3
10.0'	16	8.4	8.4
12.5'	10	10.6	10.6

PROJECT:

TYPE:

Dimming Compatibility

Amerlux® Finch fixtures are compatible with all major dimming protocols prevalent in the United States. Please see below for general compatibilities and wiring diagrams. Amerlux recommends testing your unique dimming configuration as the exact full configuration (Dimmer, Fixture Quantity, Voltage, etc) may affect dimming performance.

--- NOTE: INFORMATION BELOW IS FOR WIRED DIMMERS ONLY. FOR WIRELESS DIMMERS, CONSULT FACTORY ---

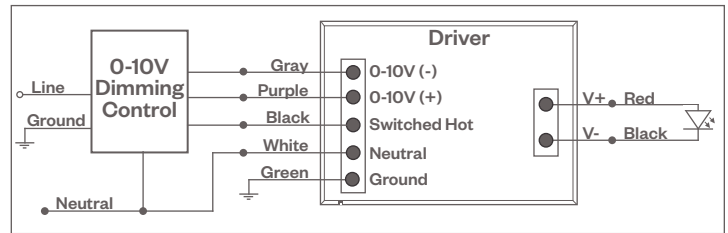
0-10V - DIMMING

Integrates into a variety of building management and daylighting controls

Notes:

- 120VAC or 277VAC
- Dims down to 1% light output
- Requires interface to turn off power to driver
- Consult Dimming manufacturer for installation instructions - DO NOT SHARE NEUTRALS!

0-10V Wiring Diagram



Compatible Dimmers*:

Wall Box

Lutron "Diva" - DVSTV

Leviton Renoir II 0-10V

Central System

Lutron Grafik Eye with GRX-TVI Interface

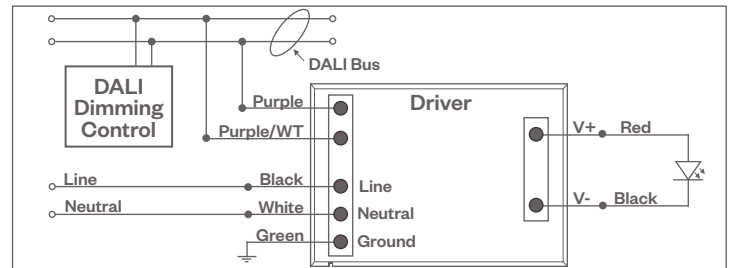
DALI DIMMING

Digital control protocol allows individual fixture control

Notes:

- 120VAC or 277VAC
- Dims down to 1% light output in most cases

DALI Wiring Diagram



Compatible Dimmers*:

Wall Box (3-Wire Fluorescent)

Leviton CD250 Controller

Central System

Dynalite
Fifth Light

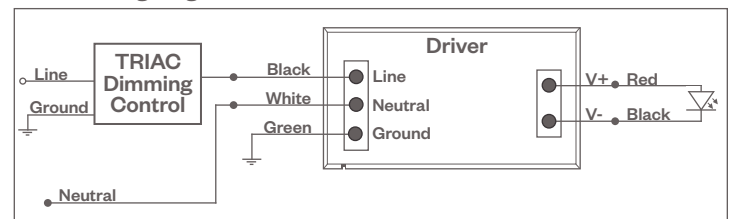
TRIAC (Forward Phase) DIMMING (Standard)

Utilizes standard TRIAC dimmers that are in wide use in installations across the US. Best for retrofit applications where TRIAC dimmers are installed.

Notes:

- 120VAC or 277VAC*
- Dims down to 5% light output (most cases)
- Consult Dimming manufacturer for installation instructions - DO NOT SHARE NEUTRALS!
- Must meet dimmer Minimum Load Requirements per dimming manufacturer

TRIAC Wiring Diagram



Compatible Dimmers*:

Wall Box (TRIAC 120VAC)

Lutron "Diva"
Lutron "Nova-T"
Lutron "Maestro"
Lutron "Skylark"

Central System

Lutron "GP" Panel
Lutron Grafik Eye QS

Notes:

* Driver is 277VAC dimmable with appropriate dimmer (by others). All provided wiring diagrams show 120VAC wiring colors and method. Please refer to 277VAC dimmer manufacturer installation instructions for 277VAC wiring diagrams.

† The absence of a dimmer from the lists above does not imply incompatibility. Please consult factory for compatibility inquiries.

PROJECT:

TYPE:

Dimming Compatibility *(continued)*

Amerlux® Finch fixtures are compatible with all major dimming protocols prevalent in the United States. Please see below for general compatibilities and wiring diagrams. Amerlux recommends testing your unique dimming configuration as the exact full configuration (Dimmer, Fixture Quantity, Voltage, etc) may affect dimming performance.

--- NOTE: INFORMATION BELOW IS FOR WIRED DIMMERS ONLY. FOR WIRELESS DIMMERS, CONSULT FACTORY ---

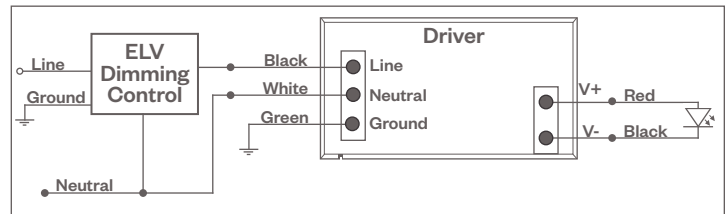
ELV - Electronic Low Voltage (Reverse Phase) DIMMING

Utilizes specialized "ELV" dimmers.

Notes:

- 120VAC or 277VAC*
- Dims down to 5% light output (most cases)
- Consult Dimming manufacturer for installation instructions - DO NOT SHARE NEUTRALS!
- Must meet dimmer Minimum Load Requirements

ELV Wiring Diagram



Compatible Dimmers*:

Wall Box (ELV 120VAC)	Wall Box (ELV 277VAC)	Central System
Lutron "Diva" Lutron "Nova-T" Lutron "Maestro" Lutron "Skylark" Leviton "Surslide" Leviton "Vizio"	Leviton Revoir II AWSMT-E	Lutron "GP" Panel with PHPM-PA 120/277VAC Lutron Grafik Eye QS with PHPM-PA 120/277VAC

LUTRON P-SERIES / ECOSYSTEM

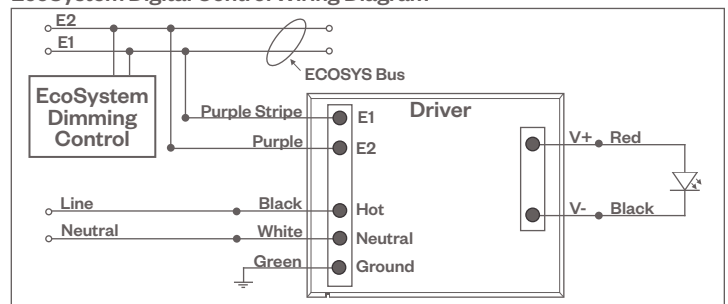
Integrates into Lutron EcoSystem building management

Notes:

- 120-277VAC*
- Dims down to 1% light output
- EcoSystem Control
- Consult Dimming manufacturer for installation instructions - DO NOT SHARE NEUTRALS!

HILUME-P-ECO

EcoSystem Digital Control Wiring Diagram



Compatible Dimmers*:

Wall Box	Central System
Lutron "Diva" Lutron "Nova-T" Lutron "Maestro"	Lutron EcoSystem compatible controls

Notes:

* Driver is 277VAC dimmable with appropriate dimmer (by others). All provided wiring diagrams show 120VAC wiring colors and method. Please refer to 277VAC dimmer manufacturer installation instructions for 277VAC wiring diagrams.

† The absence of a dimmer from the lists above does not imply incompatibility. Please consult factory for compatibility inquiries.