



**AMERLUX**<sup>®</sup>  
LIGHTING SOLUTIONS

ADAPT. ABILITY.<sup>™</sup>

INSTALLATION INSTRUCTIONS  
SHEET #: 689-0801

SPEC. SHEET  
REFERENCE:  
QLRK-FF-MF-90

## QLRK-FF-MF-90 CONTENTS

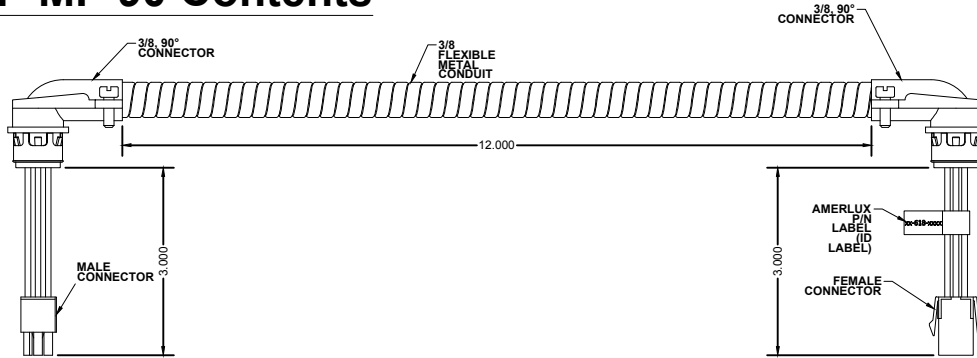
QLR4 Male Plug And Female Cap, Feed Kit 12"

**WARNING - RISK OF FIRE AND ELECTRICAL SHOCK. FIXTURE MUST BE INSTALLED BY A QUALIFIED ELECTRICIAN ONLY. FIXTURE IS INTENDED FOR INSTALLATION IN ACCORDANCE WITH THE NATIONAL ELECTRICAL CODE, LOCAL AND FEDERAL SPECIFICATIONS. DISCONNECT POWER AT ELECTRICAL PANEL BEFORE SERVICING.**

**FOR RUNS WIRED FOR EM - UNIT HAS MORE THAN ONE POWER SUPPLY CONNECTION POINT. TO REDUCE THE RISK OF ELECTRIC SHOCK, DISCONNECT BOTH THE BRANCH CIRCUIT-BREAKERS OR FUSES AND EMERGENCY/BACKUP POWER SUPPLIES BEFORE SERVICING**

**RETAIN THESE INSTRUCTIONS FOR MAINTENANCE REFERENCE.**

## QLR4-FF-MF-90 Contents



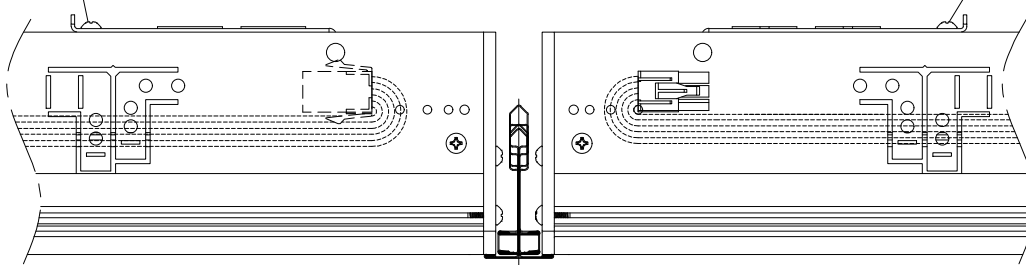
## CREATING CONTINUOUS RUNS QLR4 GRID

### 1: Remove Cover Plate

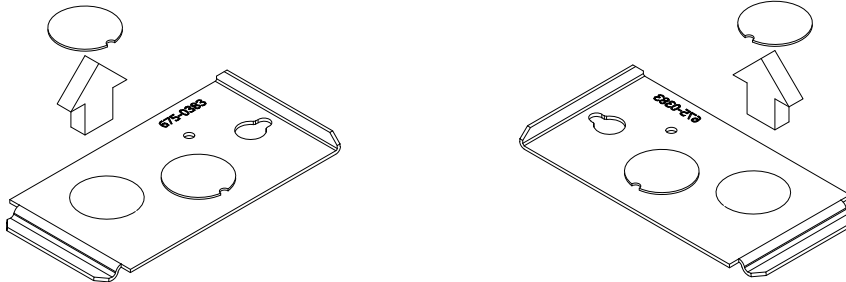
Remove #6-20 x 1/4 screw\*  
to Remove Cover Plate



Remove #6-20 x 1/4 screw\*  
to Remove Cover Plate



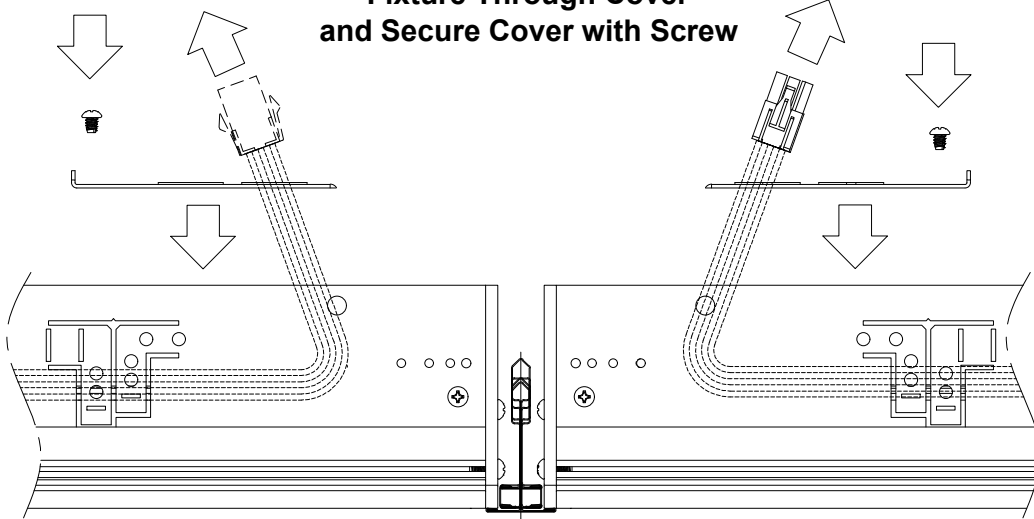
### 2: Remove One Of The Knock Outs on Each Cover



Amerlux, LLC. - 178 Bauer Drive, Oakland NJ 07436 - T: 973-882-5010 - F: 973-882-2605  
[www.amerlux.com](http://www.amerlux.com)



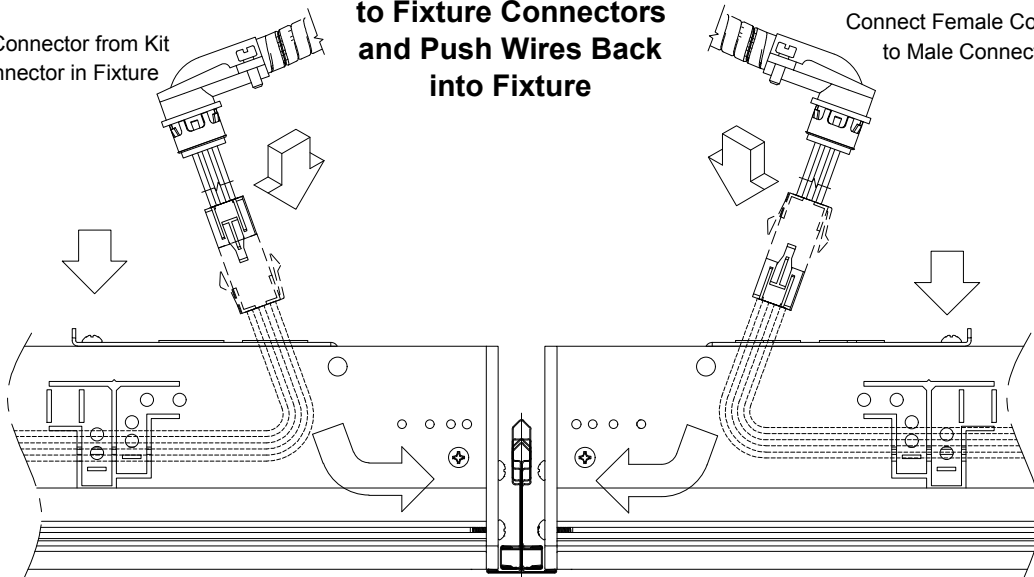
**3: Pull The Connectors From The  
Fixture Through Cover  
and Secure Cover with Screw**



**4: Connect Kit Connectors  
to Fixture Connectors  
and Push Wires Back  
into Fixture**

Connect Male Connector from Kit  
to Female Connector in Fixture

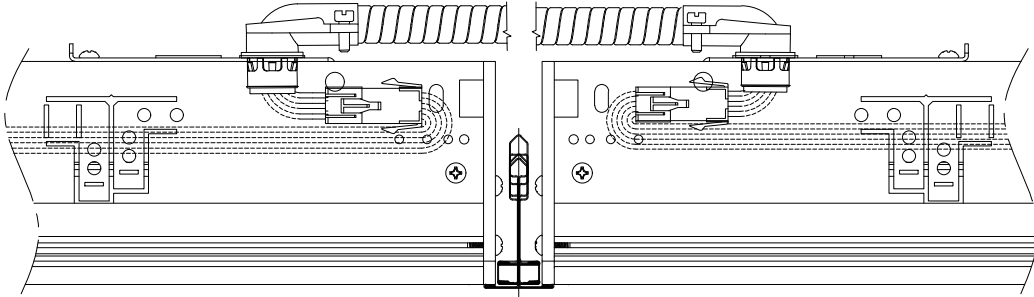
Connect Female Connector from Kit  
to Male Connector in Fixture



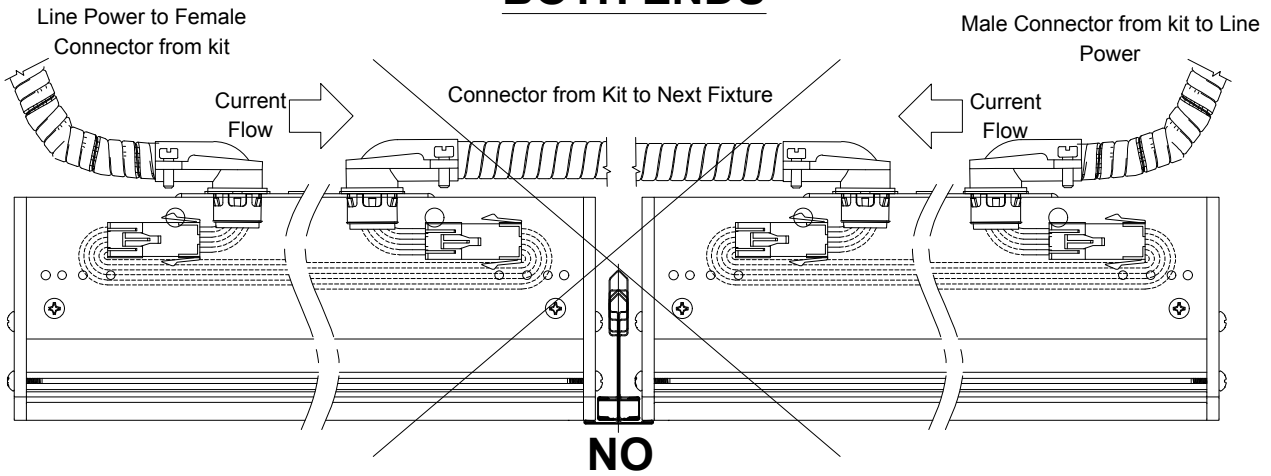
**DO NOT FEED A CONTINUOUS RUN IN (2) OR MORE LOCATIONS.**



**5: Push connectors into fixture as shown and secure 90° connectors.**



**DO NOT MAKE A CONTINUOUS RUN  
WHEN FIXTURES ARE POWERED AT  
BOTH ENDS**



**FEED ON ONE SIDE AND CONTINUE  
TO OTHER FIXTURE.**

