



**AMERLUX**<sup>®</sup>  
LIGHTING SOLUTIONS

ADAPT. ABILITY.™

## INSTALLATION INSTRUCTIONS

SHEET #: 689-0383 SHEET 1 OF 6

SPEC. SHEET  
REFERENCE:

LIN3.5D LED (SHEETS 1-4) LS35D T5/T5HO (SHEETS 5-6 )

CABLE MOUNTED FOR INDIVIDUAL FIXTURES OR CONTINUOUSLY ROW MOUNTED

☐ **WARNING** - RISK OF FIRE AND ELECTRICAL SHOCK. FIXTURE MUST BE INSTALLED BY A QUALIFIED ELECTRICIAN ONLY. FIXTURE IS INTENDED FOR INSTALLATION IN ACCORDANCE WITH THE NATIONAL ELECTRICAL CODE, LOCAL AND FEDERAL SPECIFICATIONS. DISCONNECT POWER AT ELECTRICAL PANEL BEFORE SERVICING .

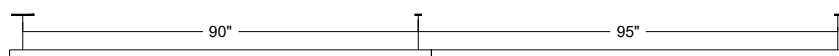
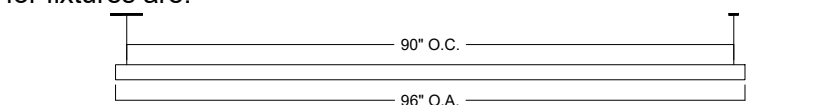
**RETAIN THESE INSTRUCTIONS FOR MAINTENANCE REFERENCE.**

### Pre-installation Note:

Supplied by others: - 4" octagonal junction boxes

Supplied by Amerlux: - canopies  
- suspension cable

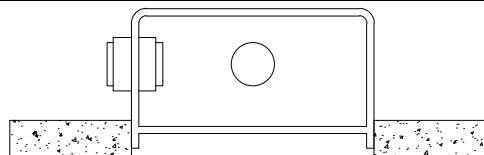
Suspension points for fixtures are:



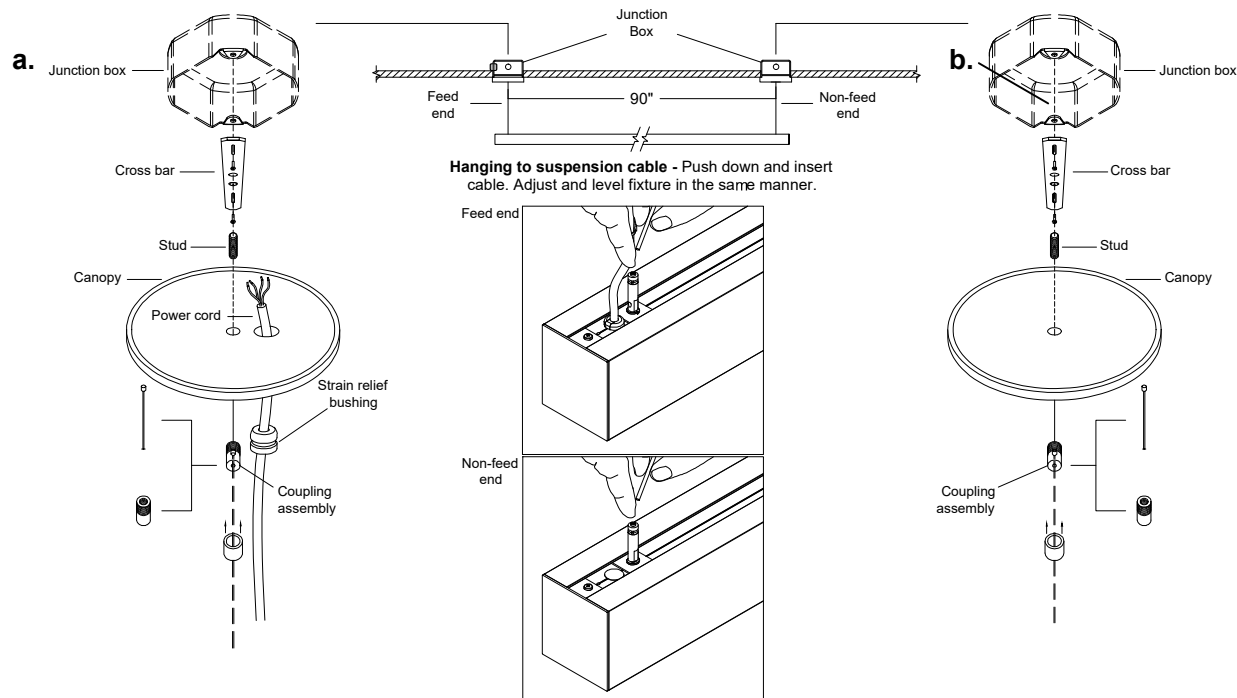
Example of continuous rows

**Refer to general contractor/ electrician layout** for proper location of mounting points/ locations for junction boxes.

- 1. Install junction box(es)** - The junction box should be placed as shown to make sure that the canopy cover sits flush with the ceiling when install is finished.



### 2. Individual and Beginning of Run Install -

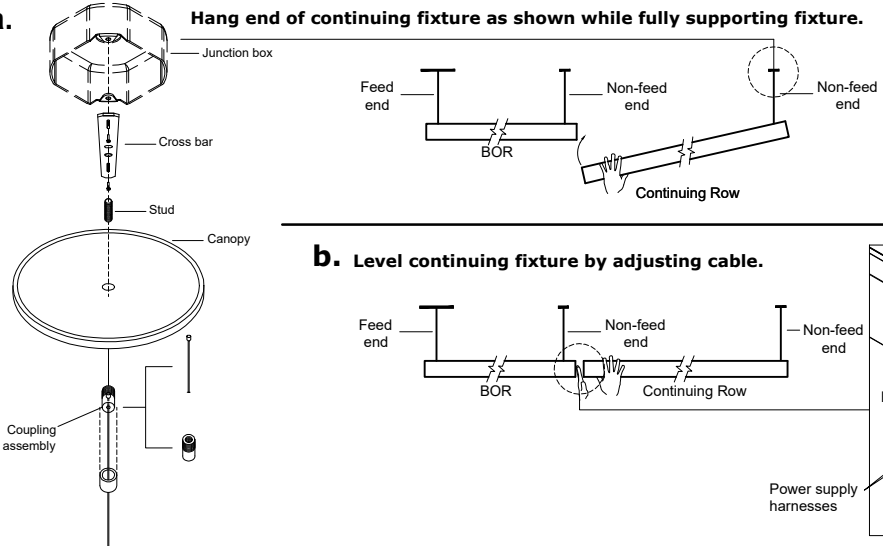


Amerlux LLC. - 1000 Bauer Drive - Ocala, FL 34461 - Tel: 352-237-1111 - Fax: 352-237-1112  
[www.amerlux.com](http://www.amerlux.com)

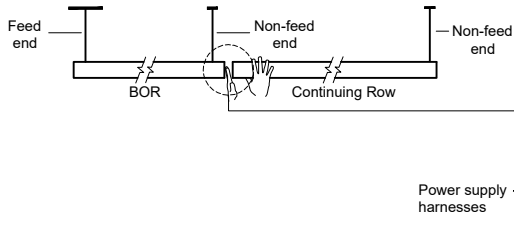


### 3. Middle of Run/End of Run install - After the BOR has been installed:

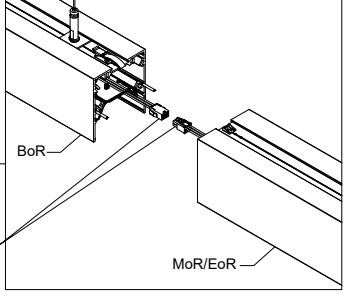
**a. Hang end of continuing fixture as shown while fully supporting fixture.**



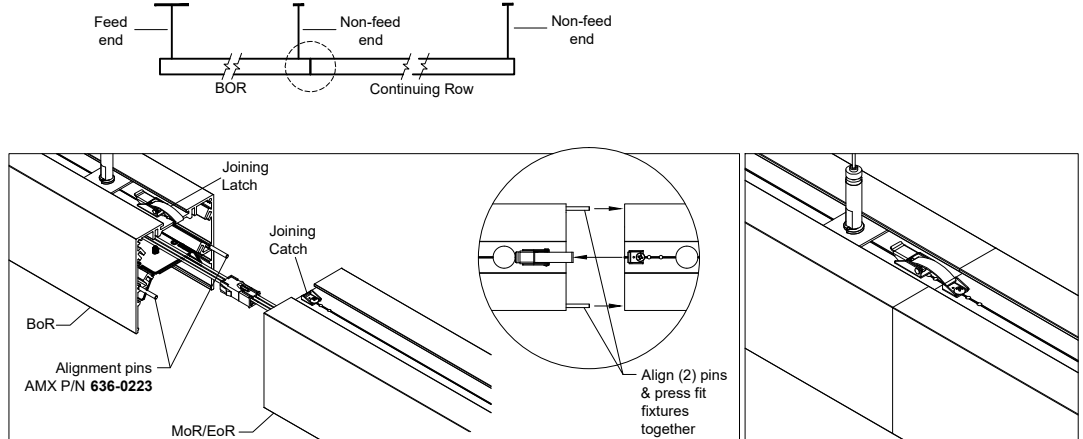
**b. Level continuing fixture by adjusting cable.**



**c. Connect power harness - After hanging & leveling the fixture as shown above, make the electrical connection between the two fixtures by joining male and female power supply harness connectors.**



- d. Join Fixtures Together - Only after the 3 previous steps are completed:**
- hanging end of continuing fixture,
  - leveling the fixture,
  - connecting the power harness,
- use the alignment pins to engage then secure with catch & latch.



**\*Suspension points must be no farther than 12" away from any row joint.**

### e. Install light leak shield (rows only):

**INSTRUCTIONS:**

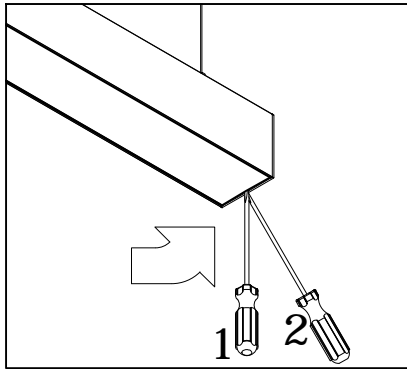
- 1- Peel-off protective film.
- 2- Bring light leak protector to housing seam (long side is vertical).
- 3- Attach protector to direct lamp seam from inside housing, mylar silver side down. Start applying from bottom, working up. Try to keep seam on the protector center line.
- 4- Repeat procedure for other side direct seam.

Light Leak Protector  
AMX P/N 637-0114

Install Light Leak Protector at each fixture joint, AMX P/N 637-0114, (2) matte white/mylar silver patches per bagged kit, (1) bagged kit per fixture joint.

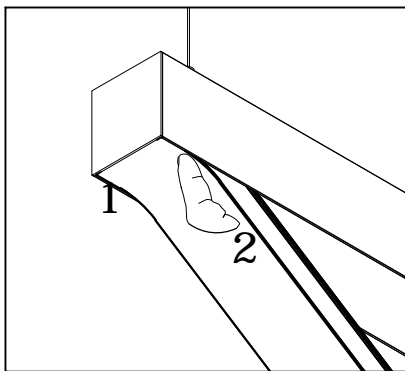
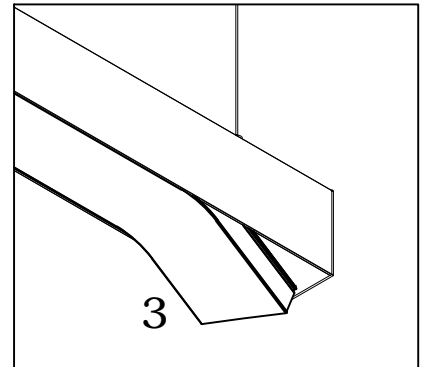


#### 4. Removing/Installing the Lens



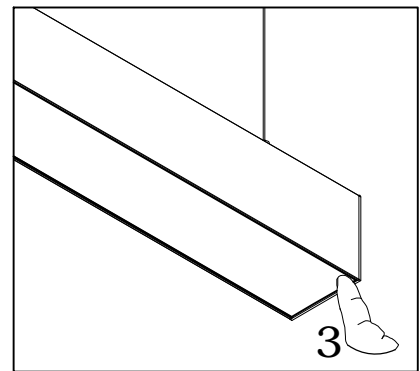
##### **Removing**

- 1: Insert flathead screwdriver between lens and fixture.
- 2: Pry out lens edge with Screwdriver.
- 3: Grab lens by the edge and "peel" lens out of fixture.



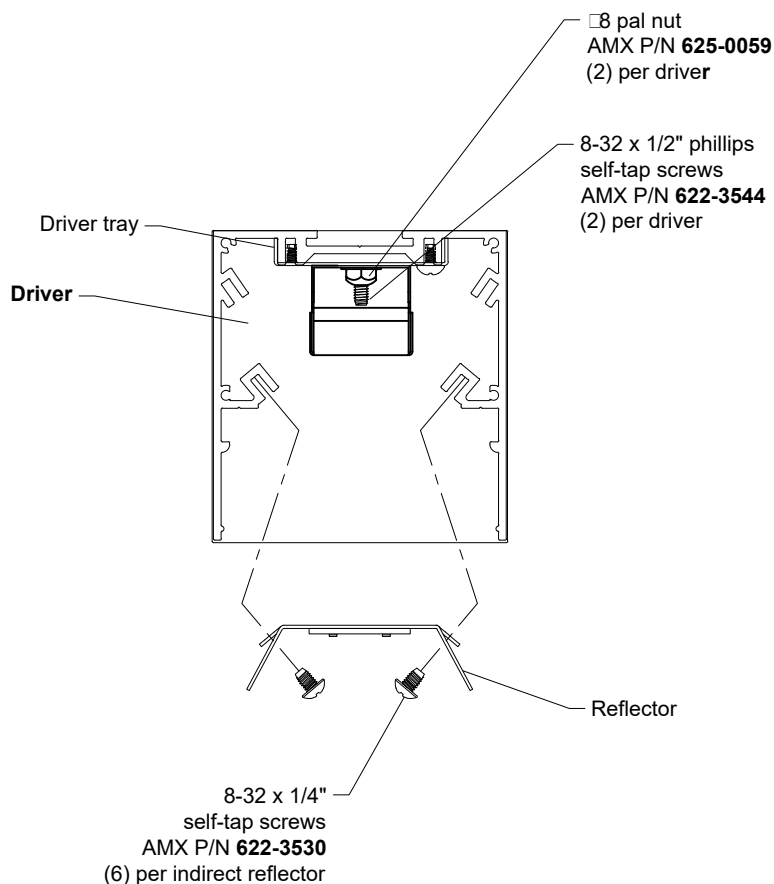
##### **Installing**

- 1: Insert Lens on one end.
- 2: Smooth lens in along fixture length with fingers.
- 3: Exert pressure until lens "clicks" in. Slide fingers down fixture until whole lens has "clicked" in.





## 5. Reflector removal (only required to access driver)



**WARNING:** Electrostatic and polarity sensitive device. Use caution while handling and wiring.

### 1.) LED Fixture:

Consult Amerlux for LED maintenance.

### 2.) LED Replacement:

For LED board replacement reference 689-0394 Instruction Sheet.

### 3.) Driver maintenance:

Drivers are located on tray beneath reflectors, (1) driver per tray, secured by (2) 8-32 screws & (2) 8-32 pal nuts. Remove the reflector mounting screws to access. For driver replacement please specify: **Manufacturer**, **Model No.** and **Current Setting** (  mA). See 10-0134 Wiring Schematic for more details.

**MAKE SURE TO DISCONNECT ALL ELECTRICAL CONNECTIONS BEFORE MAINTENANCE**

Amerlux LLC. - 1000 Bauer Drive, Olathe, KS 66061 - Tel: 913-763-1100 - Fax: 913-763-1101  
[www.amerlux.com](http://www.amerlux.com)