

# Linea® 1.5"

Linear Direct/Indirect

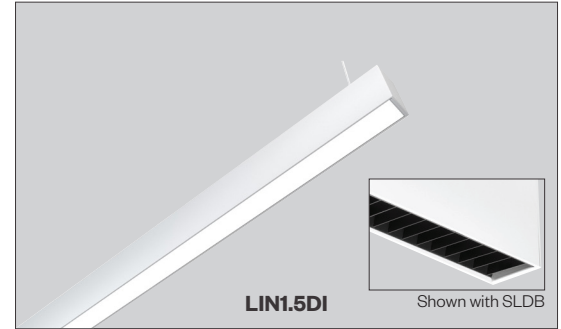


PROJECT:

TYPE:

## Features

Linea drives your design scenario, seamlessly. Streamlined and flexible, these architectural LED pendants provide the freedom to create truly dynamic spaces. A synthesis of aesthetics, performance and energy efficiency, the Linea family delivers on its promises. Our tiny new Linea 1.5" pendant proves when it comes to lighting, less really is more. Linea. The power of disciplined design.



## Product Overview

Type:	Cable Suspended or Wall Mounted Linear, Direct/Indirect	
Wattage:	5W/ft, 10W/ft (other wattages available see p2)	
Color Temp:	2700K, 3000K, 3500K, 4000K; Tunable White (2700K-5700K)	
CRI:	83 or 90+ typ. (2700K, 3000K, 3500K, 4000K) 90+ (Tunable White)	
Dimming (wired):	<u>Static White</u>	<u>Tunable White</u>
	0-10V, 1% dimming (standard)	0-10V TW, 1% dimming
	Lutron LDE1 Hi-lume® 1% Dim	DALI DT8, 1% digital dimming
	Soft-On/Fade-to-Black DALI dimming, 1% dim	
Dimming (wireless):	Lutron Athena (integral wireless RF node)	Lutron Athena TW (integral wireless RF node)
	BubblyNet Bluetooth	

## Certifications



## Fixture Summary

### Performance Data

Nominal	Delivered Lumens				Color	
Wattage/Foot	Direct	Indirect	Total	LPW	Temp	CRI
5/5	1920	2095	4015	114.4	3500K	83
10/10	3691	3948	7639	108.7	3500K	83

Data is based on 3500K-83 120V IES files available on website.

Data is based on 4' fixture with Performance Lens direct & Batwing Lens indirect.

### Runs

Individual Runs: 2' - 8' (whole foot standard).

Continuous Runs: Available (whole foot standard).

Custom: Made to measure lengths available (nearest 1/8" of field dimensions).

Requires approval drawings. Added cost & lead time.

### Electrical Data

Wattage per Foot	Voltage	4'		8'	
		System Watts	Amps	System Watts	Amps
10	120V	35.1	0.29	70.2	0.59
	277V	35.1	0.13	70.2	0.25
20	120V	70.3	0.59	140.6	1.17
	277V	70.3	0.25	140.6	0.51

Electronic multi-volt (120-277VAC), constant current LED driver.

### Standard Patterns

					Wall to Ceiling	Custom*
Yes	Yes	Yes	Yes	Yes	No	Yes

\*Submit drawing, consult factory.

PROJECT:

TYPE:

## Ordering Information

LIN1.5DI-A16 . . . . . 120/277 . . . . .

1	2	3	4	5	6	7	8	9	10	11	12
1 Model	2 Optics (select 1 from each list)	3 Mounting	4 Circuiting	5 Wattage (per foot, D/I)	6 Color Temp	7 Finish	8 Voltage	9 Length	10 Configuration	11 Drivers/Controls	12 Options/Accessories
LIN1.5DI-A16*	<b>Direct</b> <b>PL</b> performance lens <b>SLDW</b> straight blade louver, white aluminum, solid blades w/overlay <b>SLDB</b> straight blade louver, black, solid blades w/overlay <b>SLDS</b> straight blade louver, silver, solid blades w/overlay <b>ASY</b> asymmetric lens <b>DRP1</b> 1" drop lens <b>Indirect</b> <b>BAT</b> batwing uplight (standard) <b>UC</b> upper clear lens cover	<b>Pendant Mount</b> (aircraft cable suspension) <b>ASW04*</b> through ceiling tile or gyp board, white, 4' <b>ASW10</b> through ceiling tile or gyp board, white, 10' <b>ASW20</b> through ceiling tile or gyp board, white, 20' <b>ASB04*</b> through ceiling tile or gyp board, black, 4' <b>ASB10</b> through ceiling tile or gyp board, black, 10' <b>ASB20</b> through ceiling tile or gyp board, black, 20' <b>ASW04T*</b> over ceiling tee, white, 4' <b>ASW10T</b> over ceiling tee, white, 10' <b>ASW20T</b> over ceiling tee, white, 20' <b>ASB04T*</b> over ceiling tee, black, 4' <b>ASB10T</b> over ceiling tee, black, 10' <b>ASB20T</b> over ceiling tee, black, 20' * 4' (xxx04) is standard length, other lengths are additional charge	<b>Wall Mount</b> <b>WM</b> wall mount 1 single circuit 2 up/down switch separately	<b>5/5</b> <b>10/10</b> <b>5/10</b> <b>10/5</b> Consult factory for other wattage options. Note: 3' units must use same wattage for D/I components.	<b>Static White</b> <b>27</b> 2700K-83 <b>279</b> 2700K-90+ <b>30</b> 3000K-83 <b>309</b> 3000K-90+ <b>35</b> 3500K-83 <b>359</b> 3500K-90+ <b>40</b> 4000K-83 <b>409</b> 4000K-90+ <b>Tunable White</b> <b>TW9-2757</b> tunable white, 90CRI (2700K-6700K)	<b>HW</b> high reflectance matte white <b>BT</b> black texture <b>ST</b> silver texture For other RAL color, consult factory	<b>120/277</b>	_____ X _____ X _____ Length A      Length B      Length C - all patterns      - all patterns      - PU - IND      - PR (2 lengths of 2)      - PZ - CON - CUS	<b>IND</b> <sup>1</sup> individual fixture, 2' to 8' in 1' increments <b>CON</b> continuous run > than 8', specify to nearest foot <b>CUS</b> custom made to measure, +/- 1/8" of customer supplied field dimensions <u>Standard Patterns</u> (see pg 6 for details) <b>PLL</b> L left, (2) straights + (1) 90° corner, leg right <b>PLR</b> L right, (2) straights + (1) 90° corner, leg left <b>PU</b> U shape, (3) straight lengths + (2) 90° corners <b>PR</b> Rectangle shape, (4) straight lengths + (4) 90° corners <b>PZ</b> Z shape, (3) straight lengths + (2) 90° corners <b>For custom patterns, submit an EDR on amerlux.com.</b>	<u>Wired - Static White</u> <b>0-10V</b> 1% analogue dimming, 120-277VAC, dim to off when selected with wireless dimming control <b>HILUME-H-ECO</b> Lutron LDE1 Hi-lume® 1% dim Soft-On/Fade-to-Black <b>DALI</b> DALI dimming 120-277VAC, 1% dim <u>Wired - Tunable White</u> <b>0-10V-TW</b> 1% dimming, multi-volt (120V-277V) constant current <b>DALI-DT8</b> 1% digital dimming, OCT control per DALI DT8 (120V-277V) constant current <u>Wireless - Static White</u> <b>AWNRR-WH-SR</b> Lutron Athena wireless node, RF only, white, D4i/DALI-2 <b>AWNRR-BL-SR</b> Lutron Athena wireless node, RF only, black, D4i/DALI-2 <b>AWNRR-WH-010</b> Lutron Athena wireless node, RF only, white, 0-10V <b>AWNRR-BL-010</b> Lutron Athena wireless node, RF only, black, 0-10V <b>AWNRR-OCC-WH-SR</b> Lutron Athena wireless node, Occupancy & Daylight sensor, white, D4i/DALI-2 <b>AWNRR-OCC-BL-SR</b> Lutron Athena wireless node, Occupancy & Daylight sensor, black, D4i/DALI-2 <b>AWNRR-OCC-WH-010</b> Lutron Athena wireless node, Occupancy & Daylight sensor, white, 0-10V <b>AWNRR-OCC-BL-010</b> Lutron Athena wireless node, Occupancy & Daylight sensor, black, 0-10V <b>BN-BT-OCC-WH-SR</b> BubblyNet Bluetooth node, Occupancy & Daylight sensor, white, D4i/DALI-2 <b>BN-BT-OCC-WH-010</b> BubblyNet Bluetooth node, Occupancy & Daylight sensor, white, 0-10V <u>Wireless - Tunable White</u> <b>AWNRR-WH-SR-TW</b> Lutron Athena wireless node, RF only, white, D4i/DALI-2 <b>AWNRR-BL-SR-TW</b> Lutron Athena wireless node, RF only, black, D4i/DALI-2 <b>AWNRR-OCC-WH-SR-TW</b> Lutron Athena wireless node, Occupancy & Daylight sensor, white, D4i/DALI-2 <b>AWNRR-OCC-BL-SR-TW</b> Lutron Athena wireless node, Occupancy & Daylight sensor, black, D4i/DALI-2	<b>EMC-PF</b> <sup>2</sup> emergency circuit requires power feed located in last fixture section (for other locations consult factory) <b>PF</b> <sup>2</sup> Extra power feed for additional circuiting <b>EMB</b> emergency battery pack (not available for lengths under 4')

\* The "A" refers to the sequential revision in a year and "XX" refers to the year of update. Updates coincide with improved performance while not changing the overall fixture aesthetic and are reflected in the published performance data. Please contact your Amerlux representative for explanations of changes.

<sup>1</sup> Lengths less than 4' may have restrictions based upon wattage, lengths, drivers or other options.

<sup>2</sup> Not available with IND (individual) configuration.



# Linea® 1.5"

Linear Direct/Indirect



## PROJECT:

## TYPE:

### Specifications

#### Application

Open office plan, conference rooms, corridors or any indoor retail space where an exciting combination of direct and indirect ambient lighting is desired.

#### Construction

One piece extruded aluminum housing. Die-cast End Plates match fixture body finish. Die-formed, cold-rolled steel internal components are protected against rust and corrosion.

#### Optical

##### Direct:

All lenses are snap-in, extruded acrylic, with a maximum length of 8'. Fixtures shipped with lenses installed. Amerlux's proprietary acrylic lens provides excellent transmission while effectively concealing source image. All louvers are retained with spring clips attached to louver side rails, for good fit and retention.

**PL** - Performance Lens provides high efficiency with greater lens surface brightness.

**SLDx** - Straight blade Louver Direct has 0.5" high blades 0.493" on center with overlay. Available in **(W)** white aluminum (*light gray, appears white when lit*), **(B)** black or **(S)** silver.

**ASY** - Asymmetric 20° throw lens is backed high diffusion film that eliminates striations.

**DRPI** - 1" Drop lens with illuminated end caps.

##### Indirect:

Extruded acrylic lens with a maximum length of 8'.

**BAT** - Batwing uplight lens spreads light directly above fixture. 18" minimum distance between ceiling plane and top of fixture suggested.

**UC** - Upper Clear lens cover.

#### LED

Amerlux's boards and patented connector design with brand name LEDs enables Amerlux fixtures to have excellent thermal management and offer a 5 year warranty. Our LED binning is within 3 MacAdam ellipse. Boards are configured for maximum flexibility resulting in even illumination no matter the fixture layout. LED boards are easily replaced in the field with just a Phillips screw driver.

	Static White	Tunable White
CCT:	2700K, 3000K, 3500K, 4000K	2700K-5700K
CRI:	83 or 90+ typical	90+ (92 typ)
R9:	16 @ CRI 83; >50 @ CRI 90+	>50

Life: 50,000+ hr., > 70% of initial lumens (L70)

#### Electrical

**Wiring:** Individual and "Beginning of Run" (**BOR**) fixtures are prewired with power cord. All configurations have quick connect power harnesses for row connections.

**1** - 1 Circuit, direct & indirect same circuit

**2** - 2 Circuits, direct & indirect switch separately (*power feed at both ends*)

**Standard Wattage:** 5W/ft, 10W/ft.

**Optional Wattages:** 3W/ft, 4W/ft, 6W/ft, 7W/ft, 8W/ft, 9W/ft. (*3W & 4W have a minimum length of 4'*). For other wattages consult factory Emergency circuit via remote inverter or auxiliary emergency power supply (*by others*).

**This product complies with IEEE C62.41 for surge endurance up to 2.5KV. Amerlux® recommends using additional surge protection with this unit (supplied by others), surge damage is not covered under warranty.**

**EMC-PF** - Emergency circuit requires power feed to be located in last fixture section for continuous runs. For other locations consult factory. Not available for individual (**IND**) configuration.

**PF** - Extra power feed for additional circuiting. Not available for individual (**IND**) configuration.

#### Finish

All painted surfaces are premium powder coated baked on for maximum durability and color stability.

**HW** - High reflective matte White

**BT** - Black Texture

**ST** - Silver Texture

*For special paint colors supply RAL and/or actual paint chip for factory consultation.*

#### Configurations/Lengths

**IND** - Individuals are stand alone fixtures made of single lengths of 2' to 8' (*in 1' increments*). They are supplied with matching painted End Caps and the required mounting hardware. Lengths less than 4' may have restrictions based upon wattage, lengths, drivers or other options.

**CON** - Continuous runs are longer than 8', specified to the nearest whole foot. Continuous runs less than 16' are made of 2 lengths. Continuous runs longer than 16' start with a 8' Beginning of Row (**BoR**) wired with a power feed and fitted with an End Cap. The majority of the runs are made up of 8' Middle of Run (**MoR**) lengths. End of Run (**EoR**) units are made up of 2' to 8' units to the nearest whole foot or a combination of a last 4' MoR and a 5', 6' or 7' EoR. Runs longer than 60' may require a second power feed. Factory installed pins and splines simplify fixture alignment. Lengths are quickly joined with "catch and latch" mechanisms or screws and sturdy brackets. Quick connectors simplify field wiring.

**CUS** - Custom made to measure runs are made to nearest 1/8" of customer supplied field measurements. They can be a single custom length or runs configured as described above only EoR's are 2' to 8' cut to the nearest 1/8" exact length or a combination of a last 4' MoR with an EoR cut to exact length to the nearest 1/8".

**PXX** - Standard patterns consist of 90° corners with standard lengths (*3' to 8' in 1' increments*) or custom lengths. Depending upon complexity of the pattern, drawings may be required. When ordering please give overall lengths.

**A'-B'-PLL** - L Left - (1) 90° Corner (2) segments. Specify overall segments: A' & B'

**A'-B'-PLR** - L Right - (1) 90° Corner (2) segments. Specify overall segments: A' & B'

**A'-B'-PR** - Rectangle - (4) 90° Corners joining (4) segments. Specify overall segments: A' & B'

**A'-B'-C'-PU** - U shape - (2) 90° Corners joining (3) segments. Specify overall segments: A', B', & C'

**A'-B'-C'-PZ** - Z shape - (2) 90° Corners joining (3) segments. Specify overall segments: A', B', & C'

**See page 6 for layouts.**

**For custom patterns, submit an EDR on amerlux.com.**

#### Mounting

The Linea 1.5 Direct/Indirect is intended to be pendant or wall mounted in continuous rows. For indirect lighting Amerlux suggests 18" min from top of fixture to ceiling. Standard or custom patterns available.

**LIN1.5DI-A16....ASW10** - Direct/Indirect installed in center of ceiling tile or gypsum board ceiling, (*standard*) i.e. ASW10. Or if canopy is installed on a grid Tee runner add, **T** i.e. ASW10T.

**Cable Suspension:** Cable is stranded stainless steel wire supplied with cable gripper and 5"x .250" steel die formed canopy. All components are protected against rust and corrosion. Power feeds are 16 gauge 3 or 5 conductor SJT cord supplies in same color as canopy. Amerlux supplies the required feed and non-feed suspension kits based upon length, electrical options and customer requirements. Suspension kit options include: color, length and mounting condition.

**Please note: 1 Circuit is standard, the direct & indirect are on the same circuit. 2 Circuits, direct & indirect, switched separately with power feeds at both ends.**

**LIN1.5DI-A16....WM** - Wall Mounted using steel cleat bracket attached to fixture housing and wall bracket with set screws. Two bracket assemblies are used for each length under 8'. A third center bracket may be recommended. J box required at feed locations.

#### Options

**EMB** - Emergency battery pack - 10W output power, 90 min of illumination time, up to 1300 lm of initial light output. Illuminated test-switch/charging indicator light is provided. Wattage consumption by EM: 2.5W/ft (*4ft fixture*), 1.66W/ft (*6ft fixture*), 1.25W/ft (*8ft fixture*). Request can be made to light up 4ft section on 8ft unit. For direct/indirect fixtures, only the direct component will light up.

#### Certifications

Approved to UL standards for damp locations as tested by CSA  
Intended for indoor use only

#### Warranty

Amerlux's 5 year limited warranty. Please consult Amerlux website for details.

# Linea® 1.5"

Linear Direct/Indirect

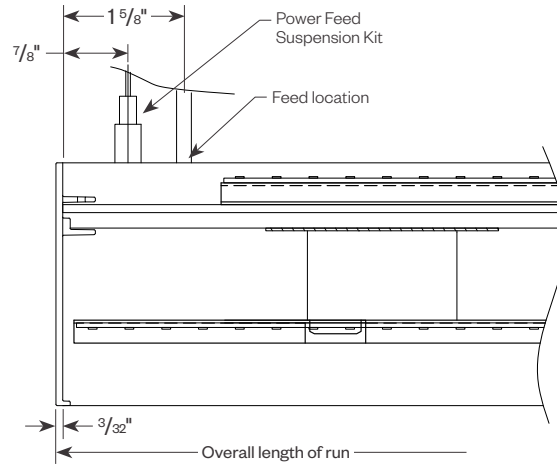
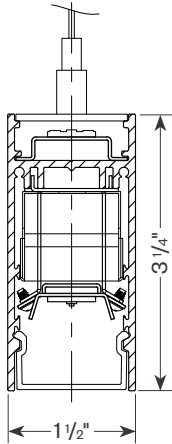


PROJECT:

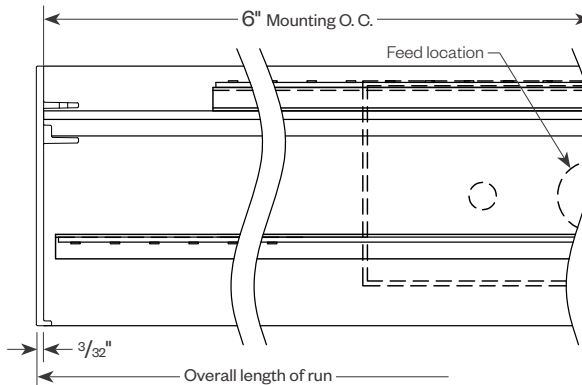
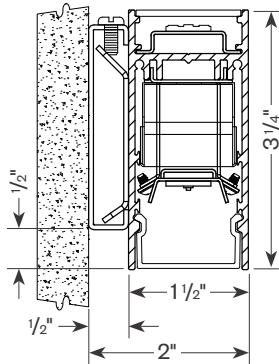
TYPE:

## Product Details

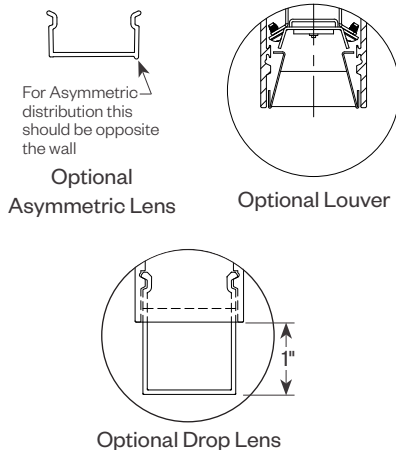
### Pendant



### Wall Mount



## Optional Louver/Drop Lens



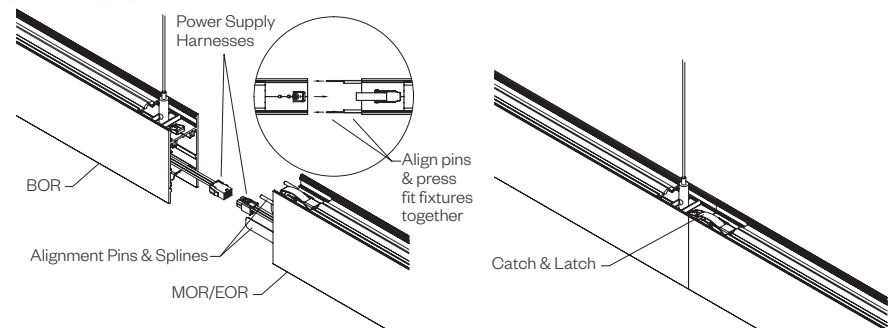
## Tool-less Joining

Line up the two housings by using the alignment pins & splines. Secure them together by using the Catch & Latch System on the top of or inside the extrusion.

### Connect Power

Connect power to previous tray via power supply harness.

### Secure Fixtures/Join



# Linea® 1.5"

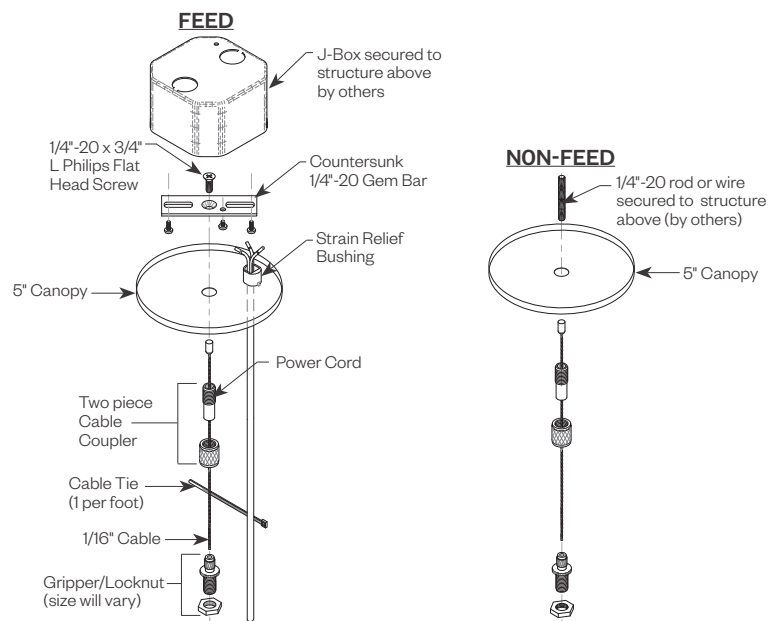
Linear Direct/Indirect



PROJECT:

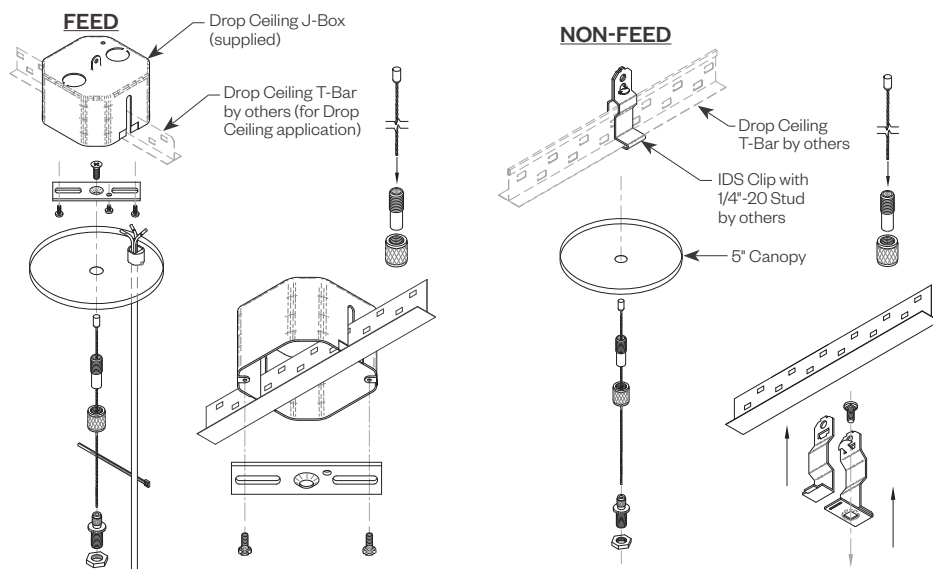
TYPE:

## Cable Kit Suspension - Ceiling or Gypsum Board (ASW04, ASW10, ASW20, ASB04, ASB10, ASB20)



Cat#	Length	Cord/Canopy	Application
ASW04	4'	white/white	ceiling tile/gypsum
ASW10	10'	white/white	ceiling tile/gypsum
ASW20	20'	white/white	ceiling tile/gypsum
ASB04	4'	black/black	ceiling tile/gypsum
ASB10	10'	black/black	ceiling tile/gypsum
ASB20	20'	black/black	ceiling tile/gypsum
ASW04T	4'	white/white	ceiling tee
ASW10T	10'	white/white	ceiling tee
ASW20T	20'	white/white	ceiling tee
ASB04T	4'	black/black	ceiling tee
ASB10T	10'	black/black	ceiling tee
ASB20T	20'	black/black	ceiling tee

## Tee Grid or Screw Slot (ASW04T, ASW10T, ASW20T, ASB04T, ASB10T, ASB20T)



# Linea® 1.5"

Linear Direct/Indirect



PROJECT:

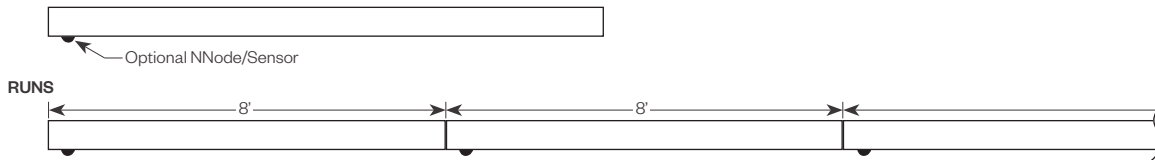
TYPE:

## Optional Sensor/RF Node

Amerlux® has partnered with control companies to create building environments that are safer and smarter, than ever before. At the heart of our partnership is intelligent RF nodes and Smart Sensor, the most advanced digital wireless communication and sensors available today. Integrated into Amerlux products.

Minimum run length is 3' for wireless sensor and RF node.

### INDIVIDUAL (MIN 3' LENGTH)



## Linea 1.5" Patterns

### Standard Patterns

All corners are standard 90°, standard length legs.

Use standard lengths: 4' min to 8' in 1 foot increments.

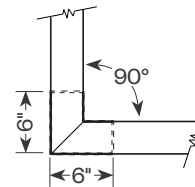
Continuous runs must be the same length in pairs for closed configuration.

### Custom Patterns

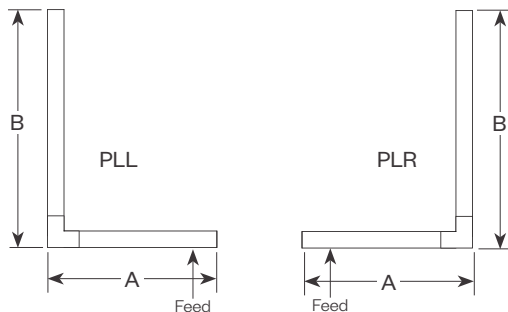
Please provide drawings of your configuration.

Made to Measure: +/- 1/8", consult factory.

PC - custom pattern, please provide drawings and consult factory.



**Linea 1.5 Lens**  
Mitered Lens

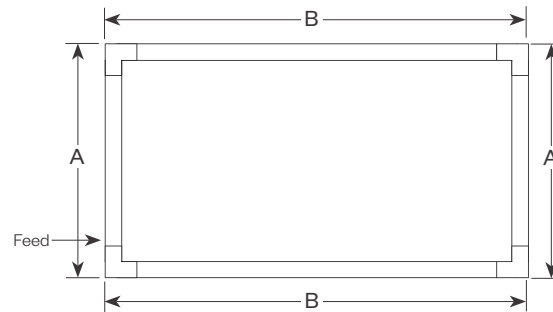


**PLL** - L Left, (2) straights + (1) 90° corner, leg right

**PLR** - L Right, (2) straights + (1) 90° corner, leg left

Provide overall lengths: A' & B'

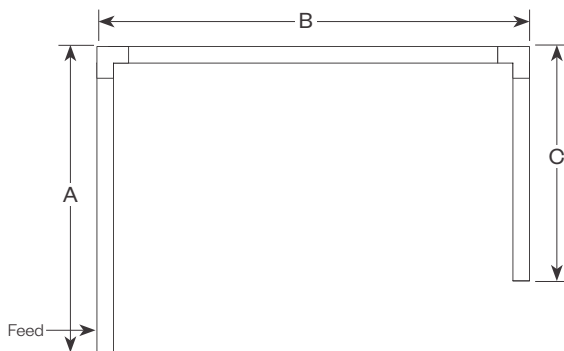
Nomenclature: A-B-PLL    A-B-PLR



**PR** - Closed Rectangle, (4) straight lengths + (4) 90° corners

Provide overall lengths: A' & B'

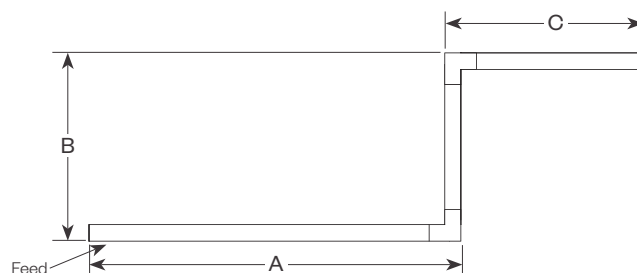
Nomenclature: A-B-PR



**PU** - Open U, (3) straight lengths + (2) 90° corners

Provide overall lengths: A', B' & C'

Nomenclature: A-B-C-PU



**PZ** - Open Z, (3) straight lengths + (2) 90° corners

Provide overall lengths: A', B' & C'

Nomenclature: A-B-C-PZ



**Delta Intelligent Building Technologies**

# Linea® 1.5"

Linear Direct/Indirect



PROJECT:

TYPE:

## Performance Data

**Multiplying Factors:** (Multiplying Factor is based on 3500K-83 120V IES file on website)

Wattage:	3W	4W	5W	6W	7W	8W	9W	10W
Factor:	0.31	0.42	0.53	0.63	0.72	0.81	0.90	1.0

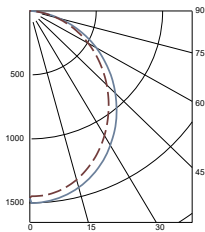
CCT Factors:					TW9
CRI	2700K	3000K	3500K	4000K	(@3500K)
83	0.92	0.97	1.0	1.02	-
90	0.81	0.84	0.86	0.89	0.86

### LINEA 1.5" DIRECT PERFORMANCE LENS 10W 3500K 4FT

Total Watts: 37 Total Lumens: 3691

Source: 96 White LED's

LTL# 14664757.01



#### ZONAL LUMEN SUMMARY

Zone	Lumens	%Fixt
0-40	1759	47.7
0-60	2984	80.8
0-90	3691	100.00
90-180	0	0.00

Efficacy = 101.1 Lumens/Watt

#### COEFFICIENTS OF UTILIZATION

Effective Floor Cavity Reflectance 20%

RC	80			
RW	70	50	30	10
RCR				
0	119	119	119	119
1	109	105	100	97
2	100	92	85	79
3	91	81	73	66
4	83	72	63	57
5	77	64	55	49
6	71	58	49	43
7	66	53	44	38
8	62	48	40	34
9	58	44	36	31
10	54	41	33	28

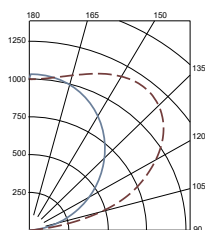
Note: Values are expressed as percent of total lumen output delivered to the task surface.

### LINEA 1.5" INDIRECT BATWING LENS 10W 3500K 4FT

Total Watts: 34 Total Lumens: 3948

Source: 88 White LED's

LTL# 14664757.06



#### ZONAL LUMEN SUMMARY

Zone	Lumens	%Fixt
0-40	0	0.0
0-60	0	0.0
0-90	0	0.0
90-180	3948	100.0

Efficacy = 116.9 Lumens/Watt

#### COEFFICIENTS OF UTILIZATION

Effective Floor Cavity Reflectance 20%

RC	80			
RW	70	50	30	10
RCR				
0	95	95	95	95
1	87	83	79	76
2	79	72	66	62
3	72	63	57	51
4	65	56	48	43
5	60	49	42	36
6	55	44	36	31
7	50	39	32	27
8	47	35	28	23
9	43	32	25	20
10	40	29	22	18

Note: Values are expressed as percent of total lumen output delivered to the task surface.



Delta Intelligent Building Technologies



# Linea® 1.5"

Linear Direct/Indirect



PROJECT:

TYPE:

## Performance Data (continued)

**Multiplying Factors:** (Multiplying Factor is based on 3500K-80 120V IES file on website)

Wattage:	3W	4W	5W	6W	7W	8W	9W	10W
Factor:	0.31	0.42	0.53	0.63	0.72	0.81	0.90	1.0

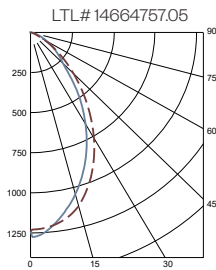
CCT Factors:					TW9
CRI	2700K	3000K	3500K	4000K	(@3500K)
83	0.92	0.97	1.0	1.02	-
90	0.81	0.84	0.86	0.89	0.86

Louver		
Finish:	SLV	BLK
Factor:	1.0	0.65

### LINEA 1.5" STRAIGHT BLADE LOUVER (SLV) 10W 3500K 4FT

Total Watts: 37 Total Lumens: 1584

Source: 96 White LED's



#### ZONAL LUMEN SUMMARY

Zone	Lumens	%Fixt
0-40	1129	71.3
0-60	1502	94.8
0-90	1584	100.00
90-180	0	0.00

Efficacy = 43.5 lumens/Watt

#### COEFFICIENTS OF UTILIZATION

Effective Floor Cavity Reflectance 20%

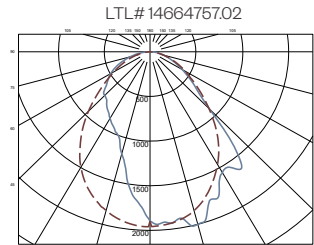
RC	80			
RW	70	50	30	10
RCR				
0	119	119	119	119
1	112	109	106	103
2	105	99	94	89
3	98	90	84	79
4	91	82	75	70
5	86	75	68	63
6	80	70	62	57
7	75	64	57	52
8	71	60	53	48
9	67	56	49	44
10	63	52	45	41

Note: Values are expressed as percent of total lumen output delivered to the task surface.

### LINEA 1.5" ASYMMETRIC LENS 10W 3500K 4FT

Total Watts: 37 Total Lumens: 4046

Source: 96 White LED's



#### ZONAL LUMEN SUMMARY

Zone	Lumens	%Fixt
0-40	2048	50.6
0-60	3358	83.0
0-90	4046	100.00
90-180	0	0.00

Efficacy = 110.8 Lumens /Watt

#### COEFFICIENTS OF UTILIZATION

Effective Floor Cavity Reflectance 20%

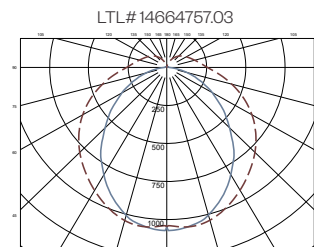
RC	80			
RW	70	50	30	10
RCR				
0	119	119	119	119
1	110	105	101	97
2	100	92	86	81
3	92	82	74	68
4	85	73	65	58
5	78	66	57	51
6	72	60	51	45
7	67	54	46	40
8	63	50	41	36
9	59	46	38	32
10	55	42	35	30

Note: Values are expressed as percent of total lumen output delivered to the task surface.

### LINEA 1.5" DROP LENS 10W 3500K 4FT

Total Watts: 37 Total Lumens: 4014

Source: 96 White LED's



#### ZONAL LUMEN SUMMARY

Zone	Lumens	%Fixt
0-40	1339	33.4
0-60	2397	59.7
0-90	3427	85.4
90-180	588	14.6

Efficacy = 109.9 Lumens /Watt

#### COEFFICIENTS OF UTILIZATION

Effective Floor Cavity Reflectance 20%

RC	80			
RW	70	50	30	10
RCR				
0	116	116	116	116
1	103	98	93	88
2	93	84	77	70
3	85	73	65	58
4	77	65	55	48
5	71	58	48	41
6	65	52	42	36
7	60	47	38	32
8	56	43	34	28
9	52	39	31	25
10	49	36	28	23

Note: Values are expressed as percent of total lumen output delivered to the task surface.



# Linea® 1.5"

Linear Direct/Indirect



PROJECT:

TYPE:

## Static White - Dimming Compatibility

Amerlux® Linea® fixtures are compatible with all major dimming protocols prevalent in the United States. Please see below for general compatibilities and wiring diagrams. Amerlux recommends testing your unique dimming configuration as the exact full configuration (*Dimmer, Fixture Quantity, Voltage, etc*) may affect dimming performance.

--- NOTE: INFORMATION BELOW IS FOR WIRED DIMMERS ONLY. FOR WIRELESS DIMMERS, CONSULT FACTORY ---

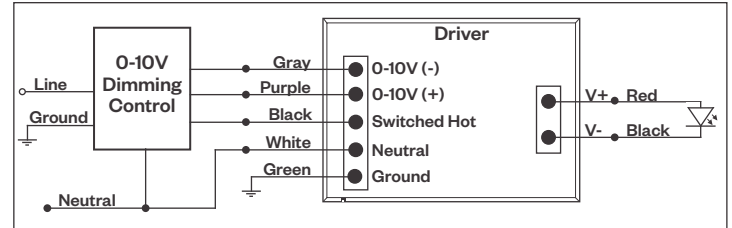
### 0-10V - DIMMING (Standard)

Integrates into a variety of building management and daylighting controls

#### Notes:

- 120V or 277V\*
- Dims down to 1% light output
- Requires interface to turn off power to driver
- Consult Dimming manufacturer for installation instructions - **DO NOT SHARE NEUTRALS!**

### 0-10V Wiring Diagram



#### Compatible Dimmers\*:

Wall Box			Central System
Lutron:	Wattstopper:	Leviton:	Lutron Grafikx Eye with GRX-TV1 Interface
Diva - DVSTV	ADF-120277	Renoir II	
Maestro - MS-Z101			
Nova-T - NTSTV-DV			

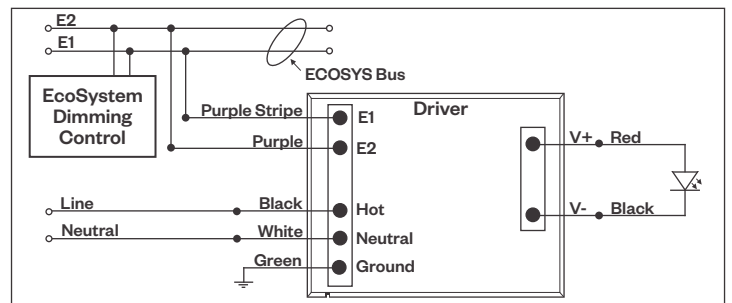
### LUTRON LDE1 DIMMING

Integrates into Lutron EcoSystem building management

#### Notes:

- 120VAC or 277VAC\*
- Dims down to 1% Soft-On/Fade-to-Black
- EcoSystem Control
- Consult Dimming manufacturer for installation instructions - **DO NOT SHARE NEUTRALS!**

### LDE1 (HILUME-H-ECO) EcoSystem Digital Control Wiring Diagram



#### Compatible Dimmers\*:

Lutron ECO System	Central System
Pow Pak Dimming Modules	Lutron EcoSystem compatible controls
Energi Savr Node	
Grafik Eye QS/Homeworks	
QS Control Unit	
Quantum Hub	
Homeworks QS/My Room	

#### Notes:

\* Driver is 277VAC dimmable with appropriate dimmer (*by others*). All provided wiring diagrams show 120VAC wiring colors and method. Please refer to 277VAC dimmer installation instructions for 277VAC wiring diagrams.

\* The absence of a dimmer from the lists above does not imply incompatibility. Please consult factory for compatibility inquiries.

# Linea® 1.5"

Linear Direct/Indirect



PROJECT:

TYPE:

## Static White - Dimming Compatibility *(continued)*

Amerlux® Linea® fixtures are compatible with all major dimming protocols prevalent in the United States. Please see below for general compatibilities and wiring diagrams. Amerlux recommends testing your unique dimming configuration as the exact full configuration (*Dimmer, Fixture Quantity, Voltage, etc*) may affect dimming performance.

--- NOTE: INFORMATION BELOW IS FOR WIRED DIMMERS ONLY. FOR WIRELESS DIMMERS, CONSULT FACTORY ---

### DALI - DALI DIMMING 120V-277V

Digital control protocol allows individual fixture control

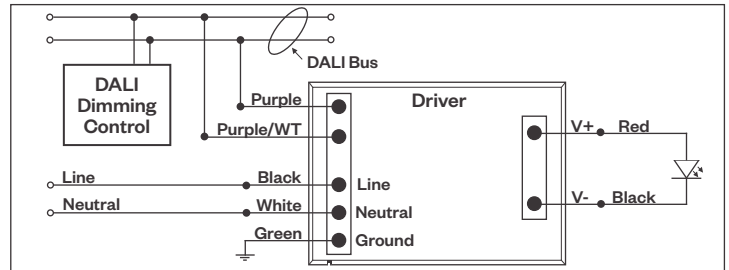
#### Notes:

- 120VAC - 277VAC\*
- Dims down to 1% light output in most cases

#### Compatible Dimmers\*:

Wall Box	Central System
Leviton CD250 Controller	Dynalite
	Fifth Light

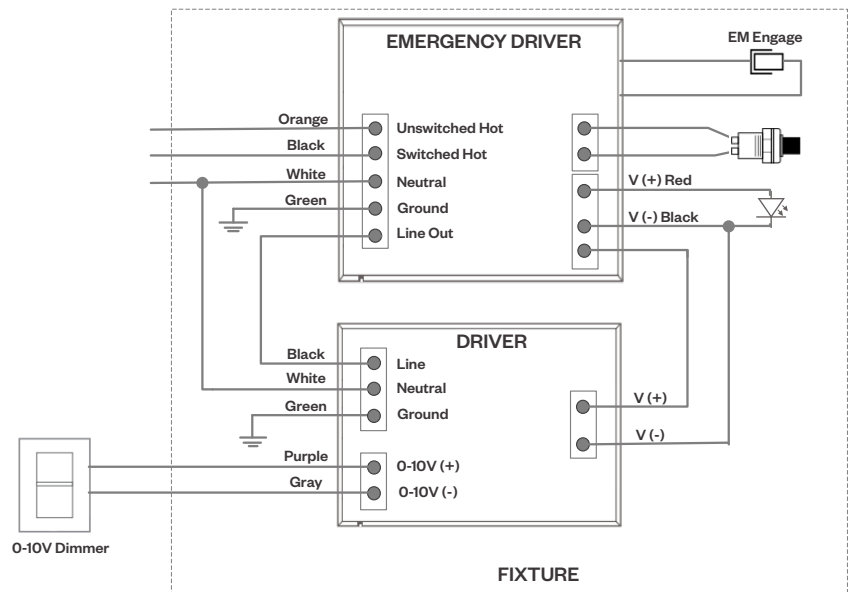
#### DALI Wiring Diagram



## Emergency Fixture with Built-In Battery Pack

Emergency fixture with built-in battery pack (*EMB*) wiring:

Note: *EMB* not available on lengths under 4'.



#### Notes:

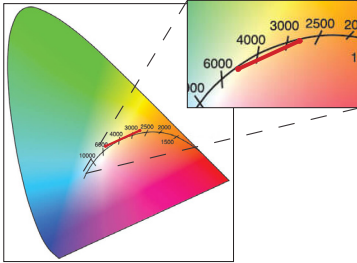
\* Driver is 277VAC dimmable with appropriate dimmer (*by others*). All provided wiring diagrams show 120VAC wiring colors and method. Please refer to 277VAC dimmer installation instructions for 277VAC wiring diagrams.

\* The absence of a dimmer from the lists above does not imply incompatibility. Please consult factory for compatibility inquiries.

PROJECT:

TYPE:

### Tunable White



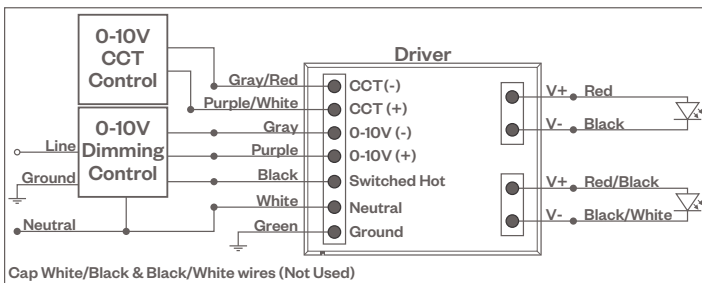
Tunable White range from 2700K-5700K, 90 CRI.  
See wiring diagrams below.

### Tunable White - Dimming Compatibility

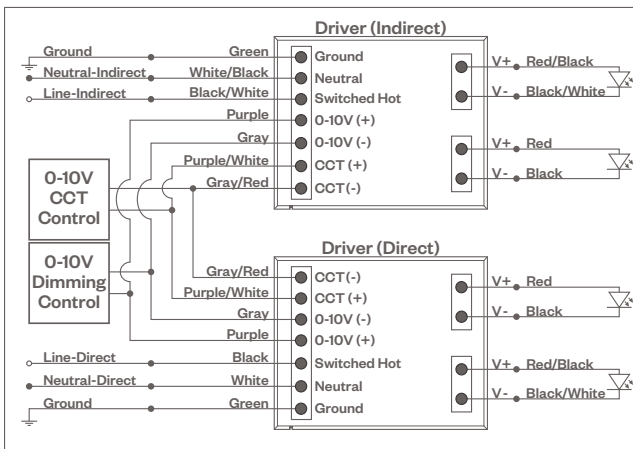
Amerlux® Linea® fixtures are compatible with all major dimming protocols prevalent in the United States. Please see below for general compatibilities and wiring diagrams. Amerlux recommends testing your unique dimming configuration as the exact full configuration (*Dimmer, Fixture Quantity, Voltage, etc*) may affect dimming performance.

--- NOTE: INFORMATION BELOW IS FOR WIRED DIMMERS ONLY. FOR WIRELESS DIMMERS, CONSULT FACTORY ---

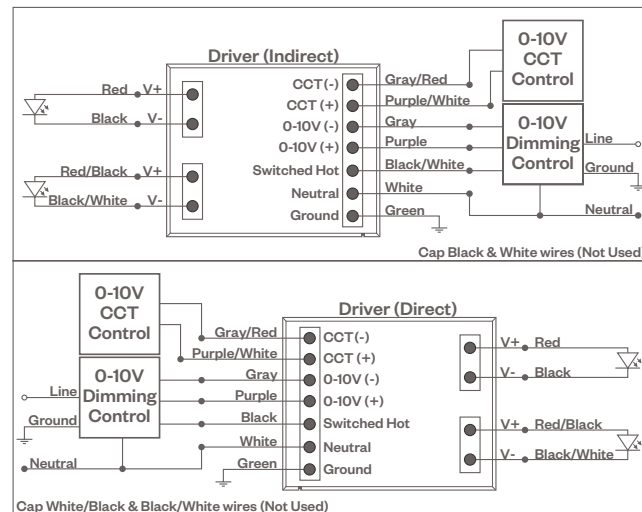
#### 0-10V Wiring Diagram (Single Circuit)



#### 0-10V Wiring Diagram (Dual Switch, Single Controls)



#### 0-10V Wiring Diagram (Dual Circuit)



#### Notes:

\* Driver is 277VAC dimmable with appropriate dimmer (by others). All provided wiring diagrams show 120VAC wiring colors and method. Please refer to 277VAC dimmer installation instructions for 277VAC wiring diagrams.

† The absence of a dimmer from the lists above does not imply incompatibility. Please consult factory for compatibility inquiries.



# Linea® 1.5"

Linear Direct/Indirect



PROJECT:

TYPE:

## Tunable White - Dimming Compatibility *(continued)*

Amerlux® Linea® fixtures are compatible with all major dimming protocols prevalent in the United States. Please see below for general compatibilities and wiring diagrams. Amerlux recommends testing your unique dimming configuration as the exact full configuration (*Dimmer, Fixture Quantity, Voltage, etc*) may affect dimming performance.

--- NOTE: INFORMATION BELOW IS FOR WIRED DIMMERS ONLY. FOR WIRELESS DIMMERS, CONSULT FACTORY ---

### DALI DT8 Wiring Diagram

