

INSTRUCTION SHEET



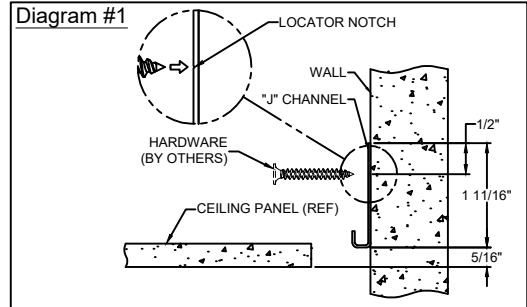
GRUV1.5-J/IS ("J" CHANNEL/INDEPENDENT SUSPENSION COMBO)

689-0557
PAGE 1 OF 2

WARNING - RISK OF FIRE AND ELECTRICAL SHOCK. FIXTURE MUST BE INSTALLED BY A QUALIFIED ELECTRICIAN ONLY. FIXTURE IS INTENDED FOR INSTALLATION IN ACCORDANCE WITH THE NATIONAL ELECTRICAL CODE, LOCAL AND FEDERAL SPECIFICATIONS. DISCONNECT POWER AT ELECTRICAL PANEL BEFORE SERVICING. RETAIN THESE INSTRUCTIONS FOR MAINTENANCE REFERENCE.

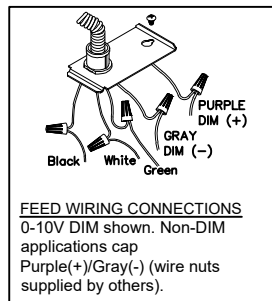
INSTALL "J" CHANNEL

- "J" channel may be supplied with the fixture or may be supplied separately.
- "J" channel is supplied in 4' and 8' lengths. For long rows one or more sections of the "J" channel must be field cut to size by installing contractor to fit the row length.
- Install "J" channel **5/16"** above the finished ceiling plane as shown in Diagram #1. Use suitable hardware.
- "J" channel straightness and trueness to architectural layout is contractor's responsibility.
- Fixture will rest in the "J" channel and as shown below, and will be structurally stabilized and secured by A) alignment brackets (optional & removable), and B) building structural member attached to 1/4-20 stud or C) optional wall bracket.



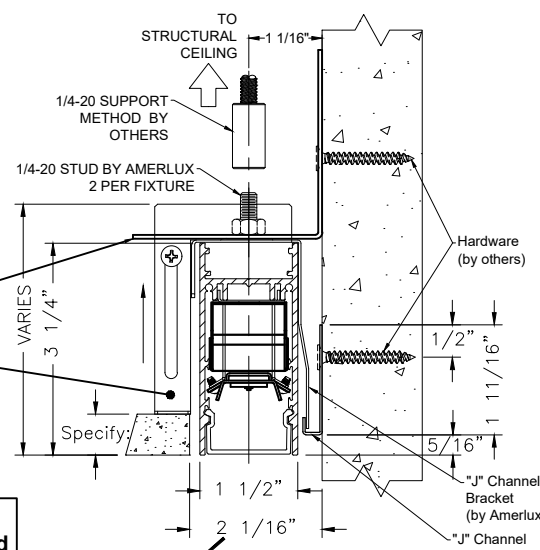
INSTALL GRUV1.5-COMBO FIXTURE:

- Lift fixture into place above ceiling. Handle fixture carefully to avoid bowing and/or fixture distortion. Lower fixture onto "J" angle.
- Level fixture and secure by 1/4-20 studs, 2 per fixture, to structure above via coupler and threaded rod (by others), or secure to wall via wall brackets supplied by Amerlux, 2 per fixture.
- Adjust alignment brackets vertically to ceiling height, 2 per fixture. Note: brackets are optional and may be removed.
- Make sure power is off at electrical panel. Make electrical connections per NEC and local codes.
- If fixture is individual, install lens. **Lens lengths usually correspond to fixture lengths.** If fixture is BoR (Beginning of Run), go to next section.



OPTIONAL BRACKET FOR SECURING TO WALL 2 PER FIXTURE SUPPLIED BY AMERLUX

SUSPENSION/ALIGNMENT BRACKETS SUPPLIED BY AMERLUX, 2 PER FIXTURE. ADJUST VERTICALLY TO CEILING HEIGHT BEFORE CEILING INSTALLATION.



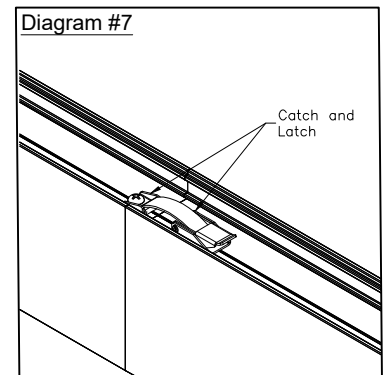
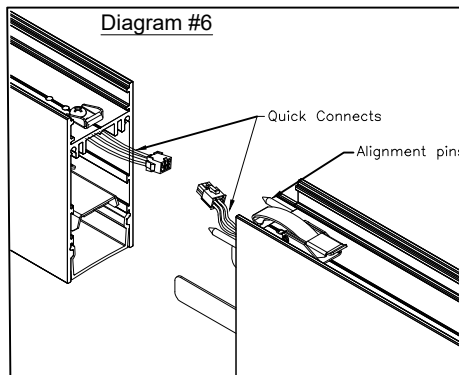
Fixtures to be installed per NEC "means of support" and all federal, national and local building codes.

THIS DIMENSION MUST BE HELD BY INSTALLER FOR THE FULL LENGTH OF THE RUN

FIXTURE MUST BE INSTALLED BEFORE CEILING.

JOIN FIXTURES IN CONTINUOUS RUN:

- Bring 2nd fixture close to installed fixture.
- Connect each reflector assembly via quick connect plugs.
- Line up the two housings by using the alignment pins, 2 per joint, factory installed in BoR and MoR (Middle of Run) fixtures. Press-fit housings together in tight butt-joint. **Be careful not to pinch harness wires between sheet metal or extrusion.**
- Secure fixtures together with catch and latch.
- Repeat for each fixture in row.
- Install correct lamps and lenses.



WARNING - RISK OF FIRE AND ELECTRICAL SHOCK. FIXTURE MUST BE INSTALLED BY A QUALIFIED ELECTRICIAN ONLY. FIXTURE IS INTENDED FOR INSTALLATION IN ACCORDANCE WITH THE NATIONAL ELECTRICAL CODE, LOCAL AND FEDERAL SPECIFICATIONS. DISCONNECT POWER AT ELECTRICAL PANEL BEFORE SERVICING. RETAIN THESE INSTRUCTIONS FOR MAINTENANCE REFERENCE.

**REFLECTOR REMOVAL:
(only required to access driver)**

WARNING: Electrostatic and polarity sensitive device.
Use caution while handling and wiring.

1.) LED Fixture:

Consult Amerlux for LED maintenance.

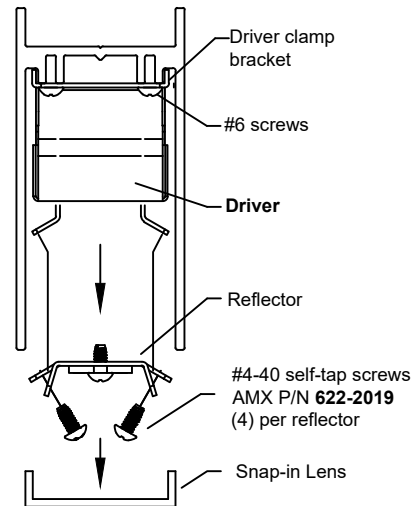
2.) LED Replacement:

For LED board replacement reference 689-0500 Instruction Sheet

3.) Driver maintenance:

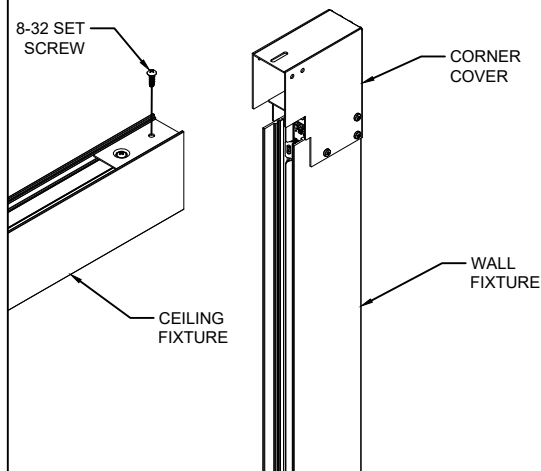
Drivers are located on tray beneath bottom reflectors, secured by (2) clamp brackets secured with #6 screws. Remove the reflector mounting screws to access.

For driver replacement, please specify: Manufacturer, Model No, and Current Setting (mA). See 710-0134 Wiring Schematic for more details.

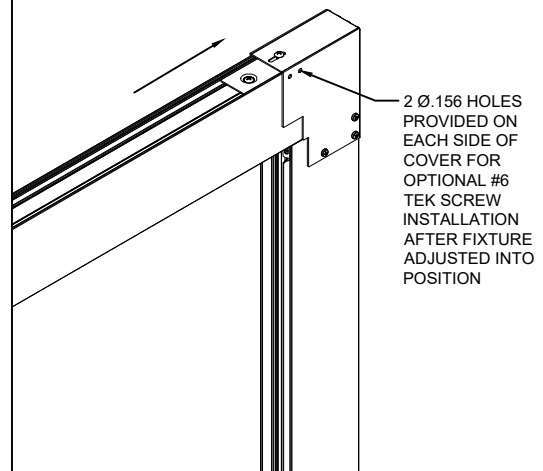


Wall/Ceiling Corner Installation (PWC option)*

1. Install wall fixture per instructions on sheet 1.
2. Remove 8-32 set screw from ceiling fixture mounting bracket.
3. Make wiring harness connections between wall & ceiling fixture.



3. Slide ceiling fixture into wall fixture corner cover. Ceiling fixture should overlap wall fixture a minimum of 1/2" with a maximum of 1 1/8" overlap.
4. Reinstall and tighten 8-32 set screw as shown.



* Fixture **MUST** be mounted before ceiling is installed.