

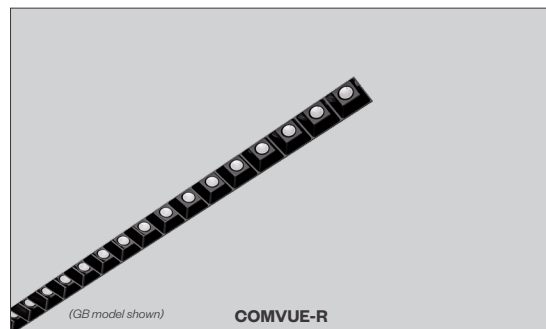


PROJECT:

TYPE:

## Features

Amerlux's Comfort Vue product line is a family of linear fixtures offering industry best visual comfort while still maintaining a high performance. Precision molded louvers combine with metallized molded optics to basically eliminate glare. Each individual LED has its own optic to eliminate any color of angle issues. Louvers are offered in Piano Black, Glossy White or Polished Chrome. The family of products include pendant mounting, surface mounting, recessed and perimeter mounting options. Comfort Vue offers the best length configurability in the industry with increments of a single cell. Fully lit corners are also available.



## Product Overview

Type:	Direct distribution with Recessed Mounting
Wattage/Ft:	3W, 4W, 5W, 6W, 7W, 8W, 9W, 10W
Color Temp:	2700K, 3000K, 3500K, 4000K
CRI:	90+ typ.
Dimming (wired):	0-10V, Lutron, DALI
Dimming (wireless):	Lutron Athena, BubblyNet Bluetooth

## Certifications



## Fixture Summary

### Electrical Data

Wattage/Foot	Voltage	4'		8'	
		System Watts	Amps	System Watts	Amps
5	120V	19.5	0.16	38.4	0.32
	277V	20	0.086	38.2	0.14
10	120V	40	0.33	78.2	0.65
	277V	39.7	0.15	76.5	0.29

Electronic multi-volt (120-277VAC), constant current LED driver.

### Standard Patterns

Yes	Yes	Yes	Yes	Yes





PROJECT:

TYPE:

## Ordering Information

120/277																
1	2	3	4	5	6	7	8	9	10	11	12					
1	Model				2	Optics		3	Louver Finish		4	Beam Spread		5	Wattage <i>(per foot)</i>	
COMVUE-R-GB gypsum board trimless mud-in					CL cellular louver		B piano black W glossy white C polished chrome		SP spot 15° FL flood 30° WF wide flood 50°		3 4 5 6 7 8 9 10					
COMVUE-R-FLG gypsum board, exposed flange																
COMVUE-R-IS independently suspended																
COMVUE-R-GRID-9/16 9/16 grid ceiling mount																
COMVUE-R-GRID-15/16 15/16 grid ceiling mount																
Note: COMVUE-R-GRID will use blank plates in order to fit the fixture within the grid system.																
6	Color Temp		7	Housing Finish		8	Voltage		9	Length						
279 2700K-90+		HW high reflectance matte white		120/277		X X X Length A Length B Length C - all patterns - all patterns - PU - IND - PR (2 lengths of 2) - PZ - CON - CUS										
309 3000K-90+		BT black texture														
359 3500K-90+		ST silver texture														
409 4000K-90+		For other RAL#, consult factory.														
10	Configuration				11	Drivers/Controls										
Nominal Length Straights					Wired											
IND <sup>1</sup> individual fixture, 2' to 8'					O-10V 1% electronic dimming , multi-volt 120-277VAC constant current driver <i>(standard)</i>											
CON continuous run > than 8'					HILUME-H-ECO Lutron LDE1 Hi-lume® 1% dim Soft-On/Fade-to-Black											
NOTE: IND and CON are built to nominal lengths based on the increment of a single cell (1.33"). Please refer to shop drawings for final dimensions.					DALI DALI dimming 120-277VAC, 1% dim											
Exact Length Straights					Wireless											
CUS custom made to measure lengths					AWN-R-WH-SR Lutron Athena wireless node, RF only, white, D4i/DALI-2											
NOTE: CUS are built to the exact ordered length and may require blank plates. Please refer to shop drawings for final dimensions.					AWN-R-BL-SR Lutron Athena wireless node, RF only, black, D4i/DALI-2											
Standard Patterns <i>(see pg 6 for details)</i>					AWN-R-WH-010 Lutron Athena wireless node, RF only, white, 0-10V											
PLL L left, (2) straights + (1) 90° corner, leg right					AWN-R-BL-010 Lutron Athena wireless node, RF only, black, 0-10V											
PLR L right, (2) straights + (1) 90° corner, leg left					AWN-R-OCC-WH-SR* Lutron Athena wireless node, Occupancy & Daylight sensor, white, D4i/DALI-2											
PU U shape, (3) straight lengths + (2) 90° corners					AWN-R-OCC-BL-SR* Lutron Athena wireless node, Occupancy & Daylight sensor, black, D4i/DALI-2											
PR Rectangle shape, (4) straight lengths + (4) 90° corners					AWN-R-OCC-WH-010* Lutron Athena wireless node, Occupancy & Daylight sensor, white, 0-10V											
PZ Z shape, (3) straight lengths + (2) 90° corners					AWN-R-OCC-BL-010* Lutron Athena wireless node, Occupancy & Daylight sensor, black, 0-10V											
NOTE: Patterns may require blank plates.					BN-BT-OCC-WH-SR* BubblyNet Bluetooth node, Occupancy & Daylight sensor, white, D4i/DALI-2											
					BN-BT-OCC-WH-010* BubblyNet Bluetooth node, Occupancy & Daylight sensor, white, 0-10V											
					* Selecting the sensor option reduces the lit length by a nominal 6." Please refer to shop drawings for final dimensions.											
12	Options/Accessories															
CP Chicago Plenum (CCEA)																
WHIP 6' whip, 18/5 conductor																
EMC-PF <sup>2</sup> emergency circuit requires power feed located in last fixture section <i>(for other locations consult factory)</i>																
PF <sup>2</sup> Extra power feed for additional circuiting																
EMB emergency battery pack <i>(not available for lengths under 4')</i>																

## PROJECT:

## TYPE:

### Specifications

#### Construction

One piece extruded aluminum housing. Die-cast end caps match fixture body finish. Internal components are die-formed, galvanized and pre-painted cold-rolled steel.

#### Optical

**CL** - precision molded metallized optics and molded cellular louvers.

#### LED

Our LED binning is within 3 MacAdam ellipse. Boards are configured for maximum flexibility resulting in even illumination no matter the fixture layout. LED boards are easily replaced in the field with just a Phillips screw driver.

**Color Temperature Options:** 2700K, 3000K, 3500K, 4000K

**CRI:** 90+

**R9:** >50 @ CRI 92

**Life:** 50,000+ hr., > 70% of initial lumens (L70)

#### Electrical

**Wiring:** Individual and "Beginning of Run" (BOR) fixtures are prewired with power cord. All configurations have quick connect power harnesses for row connections. **Standard Wattage:** 5W/ft, 10W/ft.

**Optional Wattages:** 3W/ft, 4W/ft, 6W/ft, 7W/ft, 8W/ft, 9W/ft. (3W & 4W have a minimum length of 3'). For other wattages consult factory.

Emergency circuit via remote inverter or auxiliary emergency power supply (by others).

**This product complies with IEEE C62.41 for surge endurance up to 2.5KV. Amerlux® recommends using additional surge protection with this unit (supplied by others), surge and over voltage damage is not covered under warranty.**

**EMC-PF** - Emergency circuit requires power feed to be located in last fixture section for continuous runs. For other locations consult factory. Not available for individual (IND) configuration.

**PF** - Extra power feed for additional circuiting. Not available for individual (IND) configuration.

#### Housing Finish

All painted surfaces are premium powder coated baked on for maximum durability and color stability.

**HW** - High reflective matte White

**BT** - Black Texture

**ST** - Silver Texture

For special paint colors supply RAL and/or actual paint chip for factory consultation.

#### Configurations/Lengths

##### Nominal Length Straights:

**NOTE: IND and CON are built to nominal lengths based on the increment of a single cell (1.33"). Please refer to shop drawings for final dimensions.**

**IND** - Individual fixtures are made of single standard lengths of 2 ft to 8 ft. These are stand alone fixtures with matching End Caps, supplied with the mounting hardware. Lengths less than 4' may have restrictions based upon wattage, lengths, drivers or other options.

**CON** - Continuous runs, > 8'. Runs made from standard lengths have End Caps at the beginning and end of run. Runs > 60' may require second power feed. Each housing has factory installed alignment pins. Mating fixtures are easily aligned and joined. Wiring is made fast and positive with molded quick connectors.

##### Exact Length Straights:

**NOTE: CUS are built to the exact ordered length and may require blank plates. Please refer to shop drawings for final dimensions.**

**CUS** - Custom made to measure runs are made to nearest 1/8" of customer supplied field measurements or drawings. Custom lengths use the same hardware for hairline joining.

##### Standard Patterns:

**Note: Patterns may require blank plates at the ends, depending on length.**

**PXX** - Standard Patterns consist of 90° corners with standard lengths, continuous runs or made to measure lengths. Depending upon complexity of the pattern drawings may be required from the customer. If ordering please give overall lengths.

**A'-B'-PLL** - L Left - (1) 90° Corner (2) segments. Specify overall segments: A' & B'

**A'-B'-PLR** - L Right - (1) 90° Corner (2) segments. Specify overall segments: A' & B'

**A'-B'-PR** - Rectangle - (4) 90° Corners joining (4) segments. Specify overall segments: A' & B'

**A'-B'-C'-PU** - U shape - (2) 90° Corners joining (3) segments. Specify overall segments: A', B', & C'

**A'-B'-C'-PZ** - Z shape - (2) 90° Corners joining (3) segments. Specify overall segments: A', B', & C'

**See page 6 for layouts.**

#### Mounting

Intended for use in gypsum board, grid and millwork ceilings.

Please note - fixtures to be installed before gypsum board ceiling.

COMVUE-R-GB - gypsum board trimless mud-in, fixture plastered in gypsum board ceiling

COMVUE-R-FLG - gypsum board exposed flange, fixture into gypsum board ceiling

COMVUE-R-GRID-9/16 - mounts in 9/16" Flat Tee, Screw Slot or Interlude grid ceilings

COMVUE-R-GRID-15/16 - mounts in 15/16" Flat Tee grid ceiling

COMVUE-R-IS - independently suspended

#### Certifications

Approved to UL standards for damp locations as tested by CSA

Intended for indoor use only

#### Warranty

Amerlux's 5 year limited warranty. Please consult Amerlux website for details.

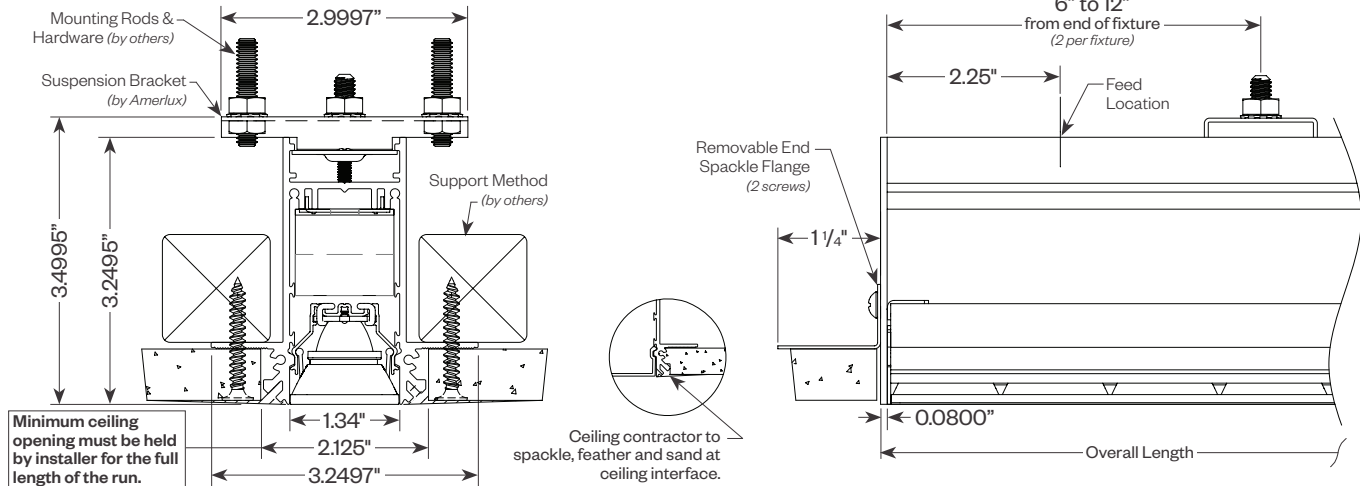


PROJECT:

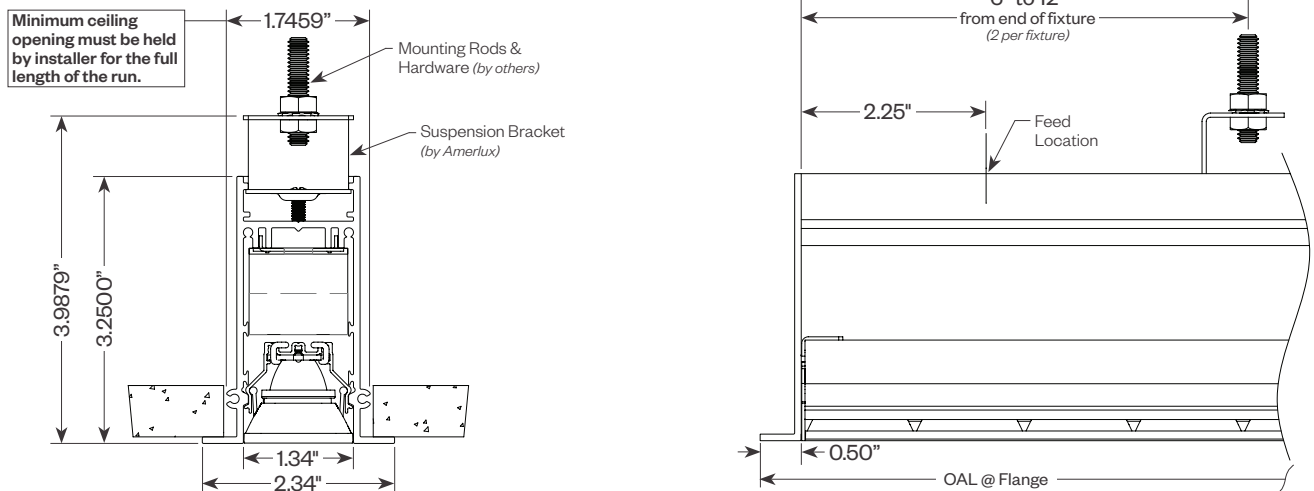
TYPE:

## Product Details

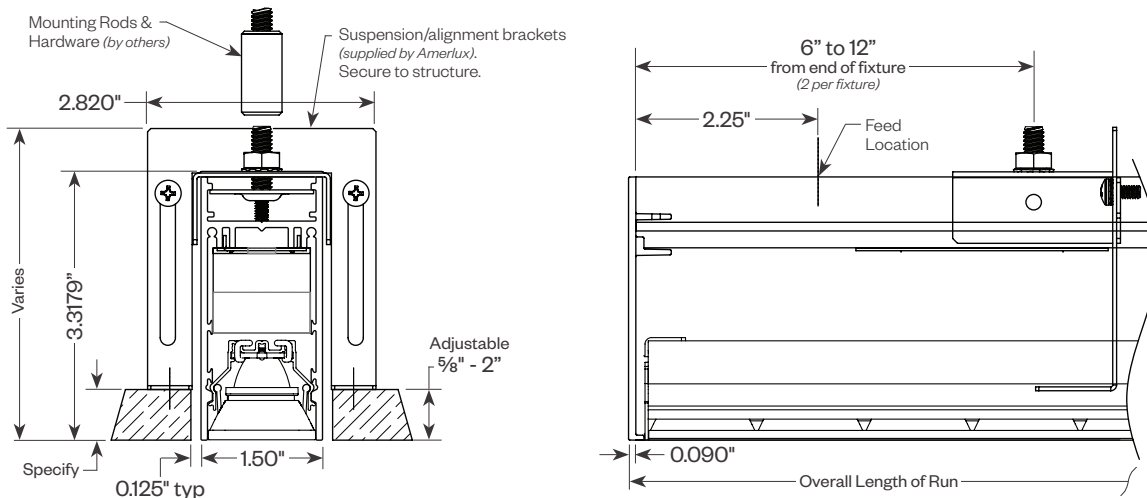
### COMVUE-R-GB (gypsum board trimless mud-in)



### COMVUE-R-FLG (gypsum board exposed flange)

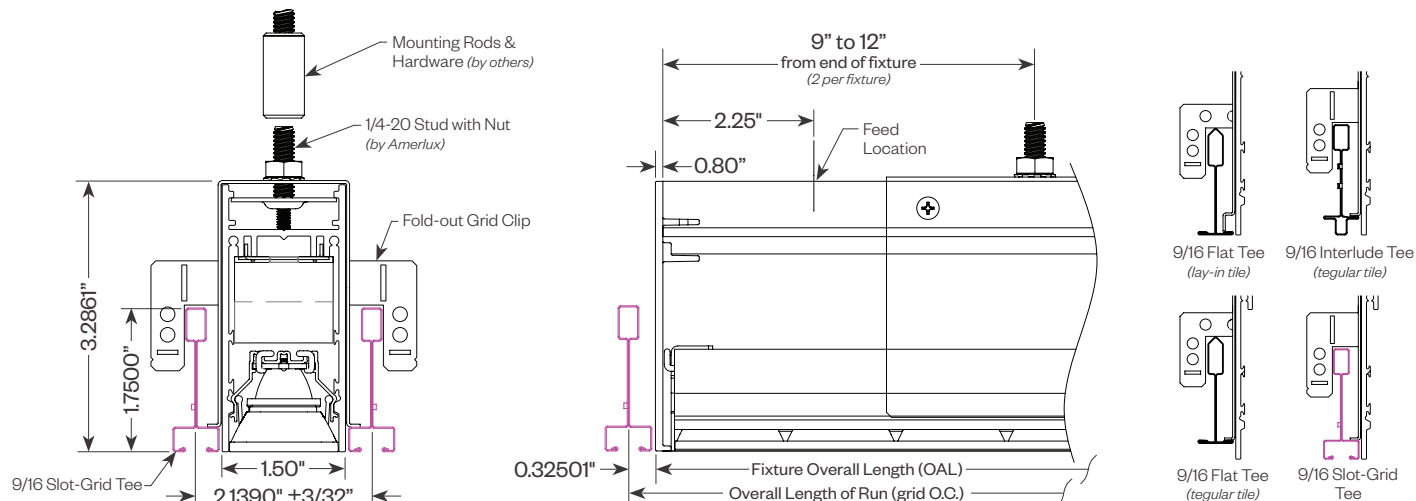
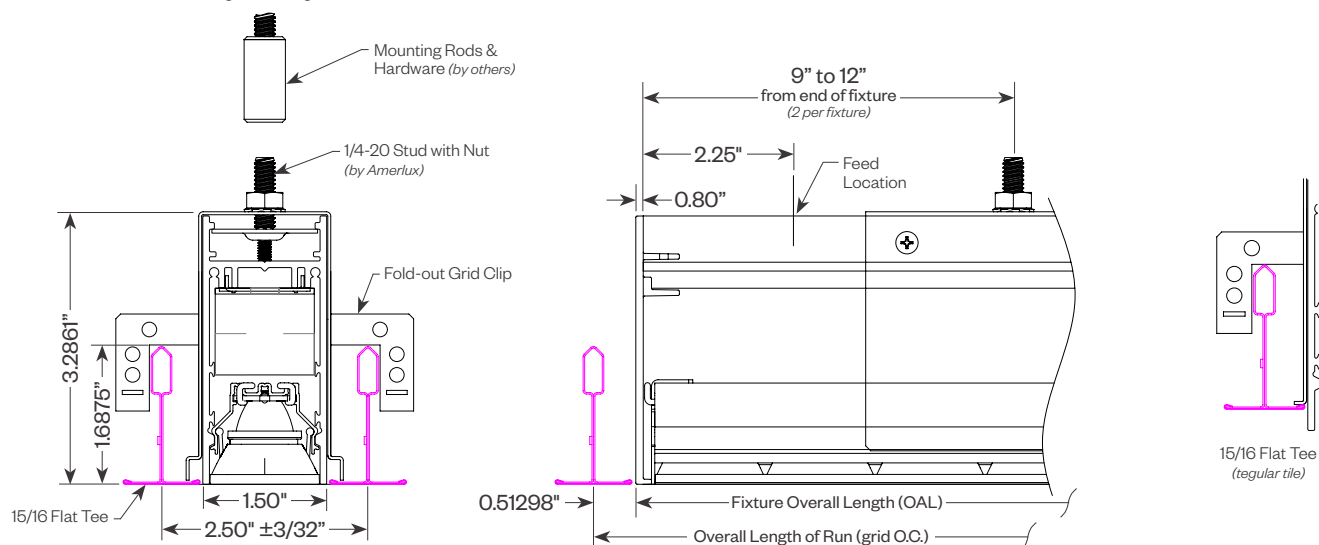


### COMVUE-R-IS (independently Suspended)

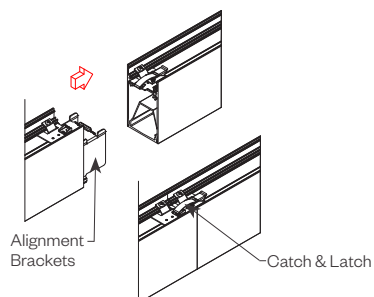


PROJECT:

TYPE:

**Product Details** *(continued)*
**COMVUE-R-GRID-9/16** *(grid ceiling mount)*

**COMVUE-R-GRID-15/16** *(grid ceiling mount)*

**Tool-less Joining**

Line up the two housings using the alignment brackets.  
 Secure them together by using the Catch & Latch System on the top of the extrusion.





PROJECT:

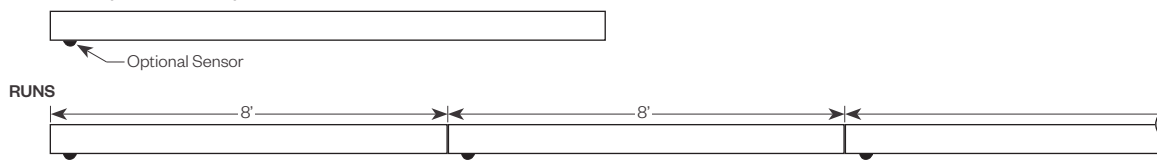
TYPE:

## Optional Sensor/RF Node

Amerlux® has partnered with control companies to create building environments that are safer, and smarter, than ever before. At the heart of our partnership is intelligent RF nodes and Smart Sensor, the most advanced digital wireless communication and sensors available today. Integrated into Amerlux products.

Minimum run length is 3' for wireless sensor and RF node.

### INDIVIDUAL (MIN 3' LENGTH)



**Note:** Selecting the sensor option reduces the lit length by a nominal 6". Please refer to shop drawings for final dimensions.

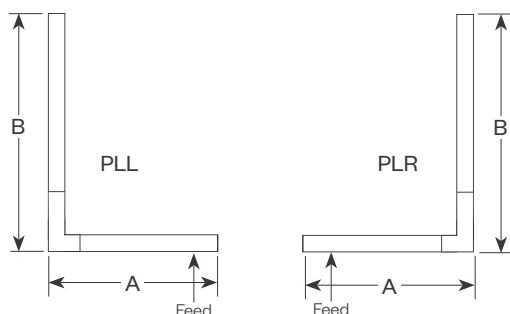
## Patterns

### Standard Patterns

All corners are standard 90°, standard length legs.

Continuous runs must be the same length in pairs for closed configuration.

Patterns may require blank plates at the ends, depending on length.



**PLL** - L Left, (2) straights + (1) 90° corner, leg right

**PLR** - L Right, (2) straights + (1) 90° corner, leg left

Provide overall lengths: A' & B'

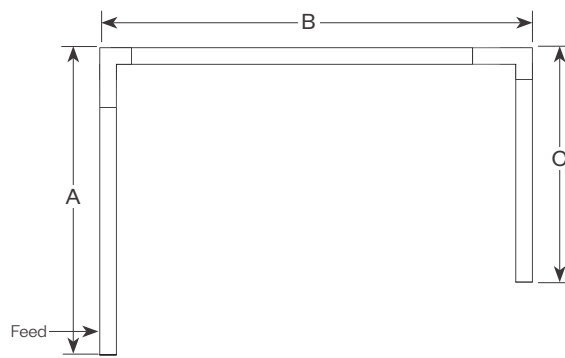
Nomenclature: A-B-PLL    A-B-PLR



**PR** - Closed Rectangle, (4) straight lengths + (4) 90° corners

Provide overall lengths: A' & B'

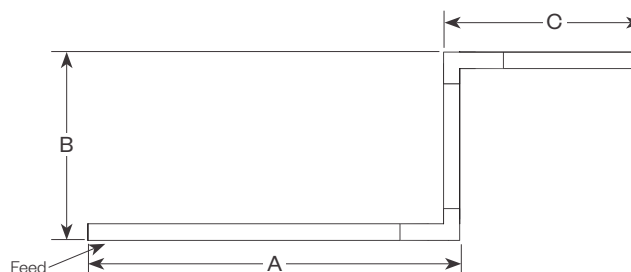
Nomenclature: A-B-PR



**PU** - Open U, (3) straight lengths + (2) 90° corners

Provide overall lengths: A', B' & C'

Nomenclature: A-B-C-PU



**PZ** - Open Z, (3) straight lengths + (2) 90° corners

Provide overall lengths: A', B' & C'

Nomenclature: A-B-C-PZ





PROJECT:

TYPE:

## Performance Data

**Multiplying Factors:** (Multiplying Factor is based on 3500K, 90CRI 120V IES file on website)

Wattage:	3W	4W	5W	6W	7W	8W	9W	10W
Factor:	0.32	0.42	0.51	0.60	0.70	0.80	0.89	1.0

Louver:	White	Chrome
Factor:	1.03	1.01

CCT:	2700K, 90CRI	3000K, 90CRI	3500K, 90CRI	4000K, 90CRI
Factor:	0.91	0.96	1.0	1.04

**Unified Glare Rating:**

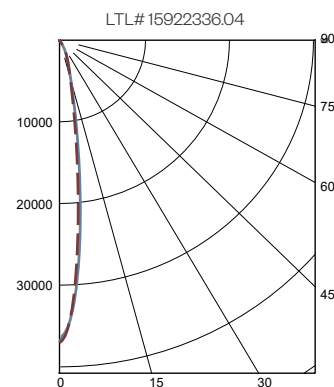
Louver:	Black	White	Chrome
UGR:	<5.2	<5.3	<5.3

Tested with 50° beam, 3500K, 90CRI, 10W/ft.  
UGR values calculated using UGR table method.

### Spot 15°

Ordered Wattage/Ft	Black Louver			White Louver			Chrome Louver		
	Actual Wattage/Ft	Lumens per Ft	LPW	Actual Wattage/Ft	Lumens per Ft	LPW	Actual Wattage/Ft	Lumens per Ft	LPW
3	3.02	330	109	3.02	340	112	3.02	333	110
4	3.95	433	110	3.95	446	113	3.95	437	111
5	5.01	525	105	5.01	541	108	5.01	530	106
6	6.00	618	103	6.00	637	106	6.00	624	104
7	6.98	721	103	6.98	743	106	6.98	728	104
8	8.00	824	103	8.00	849	106	8.00	832	104
9	9.00	917	102	9.00	944	105	9.00	926	103
10	10.10	1030	102	9.98	1061	106	9.98	1040	104

Data is based on 3500K, 90+ CRI

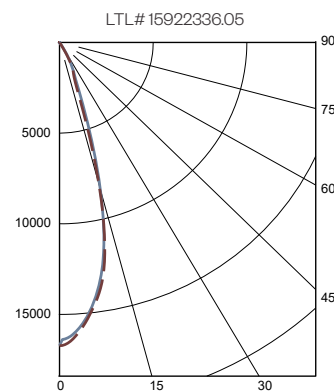


Polar Curve based on Black Louver,  
10W/ft, 3500K, 90CRI

### Flood 30°

Ordered Wattage/Ft	Black Louver			White Louver			Chrome Louver		
	Actual Wattage/Ft	Lumens per Ft	LPW	Actual Wattage/Ft	Lumens per Ft	LPW	Actual Wattage/Ft	Lumens per Ft	LPW
3	3.02	340	112	3.02	350	116	3.02	343	114
4	3.95	446	113	3.95	459	116	3.95	450	114
5	5.01	541	108	5.01	557	111	5.01	547	109
6	6.00	637	106	6.00	656	109	6.00	643	107
7	6.98	743	106	6.98	765	110	6.98	750	108
8	8.00	849	106	8.00	874	109	8.00	858	107
9	9.00	944	105	9.00	973	108	9.00	954	106
10	10.10	1061	105	9.98	1093	110	9.98	1072	107

Data is based on 3500K, 90+ CRI

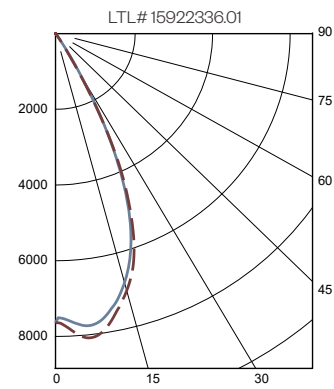


Polar Curve based on Black Louver,  
10W/ft, 3500K, 90CRI

### Wide Flood 50°

Ordered Wattage/Ft	Black Louver			White Louver			Chrome Louver		
	Actual Wattage/Ft	Lumens per Ft	LPW	Actual Wattage/Ft	Lumens per Ft	LPW	Actual Wattage/Ft	Lumens per Ft	LPW
3	3.02	330	109	3.02	368	122	3.02	362	120
4	3.95	433	110	3.95	483	122	3.95	475	120
5	5.01	525	105	5.01	587	117	5.01	577	115
6	6.00	618	103	6.00	691	115	6.00	679	113
7	6.98	721	103	6.98	806	115	6.98	792	113
8	8.00	824	103	8.00	921	115	8.00	905	113
9	9.00	917	102	9.00	1024	114	9.00	1007	112
10	10.10	1119	111	9.98	1151	115	9.98	1131	113

Data is based on 3500K, 90+ CRI



Polar Curve based on Black Louver,  
10W/ft, 3500K, 90CRI

PROJECT:

TYPE:

## Dimming Compatibility

Amerlux® Comfort Vue fixtures are compatible with all major dimming protocols prevalent in the United States. Please see below for general compatibilities and wiring diagrams. Amerlux recommends testing your unique dimming configuration as the exact full configuration (*Dimmer, Fixture Quantity, Voltage, etc*) may affect dimming performance.

--- NOTE: INFORMATION BELOW IS FOR WIRED DIMMERS ONLY. FOR WIRELESS DIMMERS, CONSULT FACTORY ---

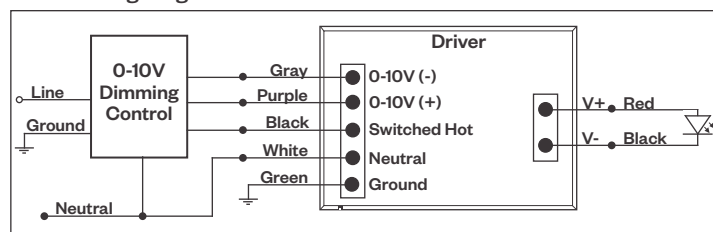
### 0-10V - DIMMING (Standard)

Integrates into a variety of building management and daylighting controls

#### Notes:

- 120V or 277V\*
- Dims down to 1% light output
- Requires interface to turn off power to driver
- Consult Dimming manufacturer for installation instructions - **DO NOT SHARE NEUTRALS!**

### 0-10V Wiring Diagram



#### Compatible Dimmers\*:

Wall Box			Central System
Lutron:	Wattstopper:	Leviton:	Lutron Grafikx Eye with GRX-TV1 Interface
Diva - DVSTV	ADF-120277	Renoir II	
Maestro - MS-Z101			
Nova-T - NTSTV-DV			

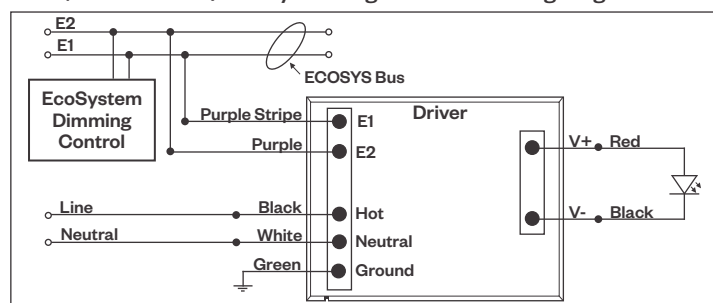
### LUTRON LDE1 DIMMING

Integrates into Lutron EcoSystem building management

#### Notes:

- 120VAC or 277VAC\*
- Dims down to 1% Soft-On/Fade-to-Black
- EcoSystem Control
- Consult Dimming manufacturer for installation instructions - **DO NOT SHARE NEUTRALS!**

### LDE1 (HILUME-H-ECO) EcoSystem Digital Control Wiring Diagram



#### Compatible Dimmers\*:

Lutron ECO System	Central System
Pow Pak Dimming Modules	Lutron EcoSystem compatible controls
Energi Savr Node	
Grafik Eye QS/Homeworks	
QS Control Unit	
Quantum Hub	
Homeworks QS/My Room	

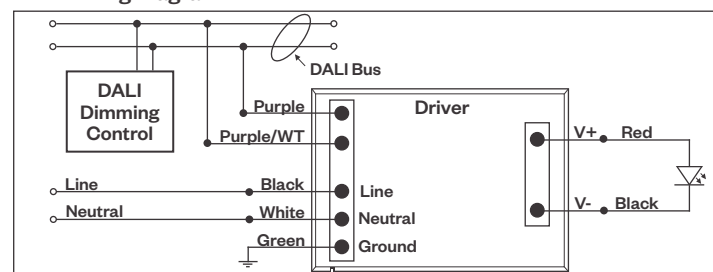
### DALI - DALI DIMMING 120V-277V

Digital control protocol allows individual fixture control

#### Notes:

- 120VAC - 277VAC\*
- Dims down to 1% light output in most cases

### DALI Wiring Diagram



#### Compatible Dimmers\*:

Wall Box	Central System
Leviton CD250 Controller	Dynalite
	Fifth Light

#### Notes:

\* Driver is 277VAC dimmable with appropriate dimmer (*by others*). All provided wiring diagrams show 120VAC wiring colors and method. Please refer to 277VAC dimmer installation instructions for 277VAC wiring diagrams.

\* The absence of a dimmer from the lists above does not imply incompatibility. Please consult factory for compatibility inquiries.





PROJECT:

TYPE:

## Emergency Fixture with Built-In Battery Pack

Emergency fixture with built-in battery pack (**EMB**) wiring:

*Note: EMB not available on lengths under 4'.*

