

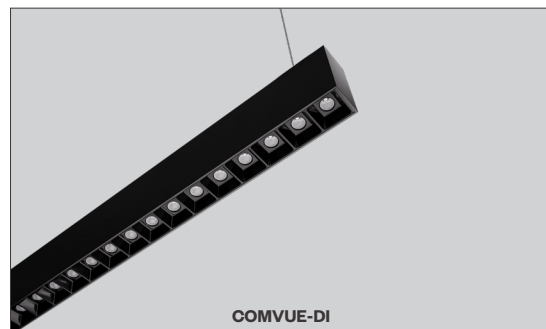


PROJECT:

TYPE:

Features

Amerlux's Comfort Vue product line is a family of linear fixtures offering industry best visual comfort while still maintaining a high performance. Precision molded louvers combine with metallized molded optics to basically eliminate glare. Each individual LED has its own optic to eliminate any color of angle issues. Louvers are offered in Piano Black, Glossy White or Polished Chrome. The family of products include pendant mounting, surface mounting, recessed and perimeter mounting options. Comfort Vue offers the best length configurability in the industry with increments of a single cell. Fully lit corners are also available. Indirect batwing distribution is also available for adding soft, ambient light to a space.



Product Overview

Type:	Direct/Indirect distribution with Pendant Mounting
Wattage/Ft:	3W, 4W, 5W, 6W, 7W, 8W, 9W, 10W
Color Temp:	2700K, 3000K, 3500K, 4000K
CRI:	90+ typ.
Dimming (wired):	0-10V, Lutron, DALI
Dimming (wireless):	Lutron Athena, BubblyNet Bluetooth

Certifications



Fixture Summary

Electrical Data

Wattage/Foot	Voltage	4'		8'	
		System Watts	Amps	System Watts	Amps
5	120V	39	0.32	76.8	0.64
	277V	40	0.172	76.4	0.28
10	120V	80	0.66	156.4	1.30
	277V	79.4	0.30	153.0	0.58

Electronic multi-volt (120-277VAC), constant current LED driver.

Standard Patterns

Yes	Yes	Yes	Yes	Yes





PROJECT:

TYPE:

Ordering Information

COMVUE-DI				/		120/277							
1	2	3	4	5	6	7	8	9	10	11	12	13	14
1	Model	2	Optics	3	Louver Finish	4	Beam Spread						
	COMVUE-DI		<u>Direct</u> CL cellular louver <u>Indirect</u> BAT batwing		B piano black W glossy white C polished chrome		SP spot 15° FL flood 30° WF wide flood 50°						
5	Mounting				6	Circuiting		7	Wattage (per foot, direct/indirect)		8	Color Temp	
	Pendant Mount (aircraft cable suspension) ASW04 through ceiling tile or gyp board, white, 4* ASW10 through ceiling tile or gyp board, white, 10' ASW20 through ceiling tile or gyp board, white, 20' ASB04 through ceiling tile or gyp board, black, 4* ASB10 through ceiling tile or gyp board, black, 10' ASB20 through ceiling tile or gyp board, black, 20' ASW04T over ceiling tee, white, 4* ASW10T over ceiling tee, white, 10' ASW20T over ceiling tee, white, 20' ASB04T over ceiling tee, black, 4* ASB10T over ceiling tee, black, 10' ASB20T over ceiling tee, black, 20' * 4' (xxx04) is standard length, other lengths are additional charge.					1 single circuit, direct & indirect are on the same circuit 2 dual circuit, direct & indirect controlled independently <i>Note: 3' & below lengths must use single circuit.</i>			Direct Indirect 3 3 4 4 5 5 6 6 7 7 8 8 9 9 10 10 <i>Note: If specifying different wattage for direct & indirect, then must specify dual circuit.</i>			279 2700K-90+ 309 3000K-90+ 359 3500K-90+ 409 4000K-90+	
9	Housing Finish		10	Voltage	11	Length							
	HW high reflectance matte white BT black texture ST silver texture <i>For other RAL color, consult factory</i>			120/277		----- X ----- X ----- Length A Length B Length C - all patterns - all patterns - PU - IND - PR (2 lengths of 2) - PZ - CON - CUS							
12	Configuration				13	Drivers/Controls							
	Nominal Length Straights IND ¹ individual fixture, 2' to 8' CON continuous run > than 8' <i>NOTE: IND and CON are built to nominal lengths based on the increment of a single cell (1.33"). Please refer to shop drawings for final dimensions.</i> Exact Length Straights CUS custom made to measure lengths <i>NOTE: CUS are built to the exact ordered length and may require blank plates. Please refer to shop drawings for final dimensions.</i> Standard Patterns (see pg 6 for details) PLL L left, (2) straights + (1) 90° corner, leg right PLR L right, (2) straights + (1) 90° corner, leg left PU U shape, (3) straight lengths + (2) 90° corners PR Rectangle shape, (4) straight lengths + (4) 90° corners PZ Z shape, (3) straight lengths + (2) 90° corners <i>NOTE: Patterns may require blank plates.</i>					Wired 0-10V 1% electronic dimming , multi-volt 120-277VAC constant current driver (standard) HILUME-H-ECO Lutron LDE1 Hi-lume® 1% dim Soft-On/Fade-to-Black DALI DALI dimming 120-277VAC, 1% dim <u>Wireless</u> AWN-R-WH-SR Lutron Athena wireless node, RF only, white, D4i/DALI-2 AWN-R-BL-SR Lutron Athena wireless node, RF only, black, D4i/DALI-2 AWN-R-WH-010 Lutron Athena wireless node, RF only, white, 0-10V AWN-R-BL-010 Lutron Athena wireless node, RF only, black, 0-10V AWN-R-OCC-WH-SR* Lutron Athena wireless node, Occupancy & Daylight sensor, white, D4i/DALI-2 AWN-R-OCC-BL-SR* Lutron Athena wireless node, Occupancy & Daylight sensor, black, D4i/DALI-2 AWN-R-OCC-WH-010* Lutron Athena wireless node, Occupancy & Daylight sensor, white, 0-10V AWN-R-OCC-BL-010* Lutron Athena wireless node, Occupancy & Daylight sensor, black, 0-10V BN-BT-OCC-WH-SR* BubblyNet Bluetooth node, Occupancy & Daylight sensor, white, D4i/DALI-2 BN-BT-OCC-WH-010* BubblyNet Bluetooth node, Occupancy & Daylight sensor, white, 0-10V <i>* Selecting the sensor option reduces the lit length by a nominal 6." Please refer to shop drawings for final dimensions.</i>							
14	Options/Accessories												
	EMC-PF ² emergency circuit requires power feed located in last fixture section (for other locations consult factory) PF ² Extra power feed for additional circuiting EMB emergency battery pack (not available for lengths under 4')												

¹ Lengths less than 4' may have restrictions based upon wattage, lengths, drivers or other options.

² Not available with IND (individual) configuration.



PROJECT:

TYPE:

Specifications

Construction

One piece extruded aluminum housing. Die-cast end caps match fixture body finish. Internal components are die-formed, galvanized and pre-painted cold-rolled steel.

Optical

Direct:

CL - precision molded metallized optics and molded cellular louvers.

Indirect:

Extruded acrylic lens with maximum length of 8'.

BAT - Batwing uplight lens spreads light directly above fixture. 18" minimum distance between ceiling plane and top of fixture suggested.

LED

Our LED binning is within 3 MacAdam ellipse. Boards are configured for maximum flexibility resulting in even illumination no matter the fixture layout. LED boards are easily replaced in the field with just a Phillips screw driver.

Color Temperature Options: 2700K, 3000K, 3500K, 4000K

CRI: 90+

R9: >50 @ CRI 92

Life: 50,000+ hr., > 70% of initial lumens (L70)

Electrical

Wiring: Individual and "Beginning of Run" (BOR) fixtures are prewired with power cord. All configurations have quick connect power harnesses for row connections.

Standard Wattage: 5W/ft, 10W/ft.

Optional Wattages: 3W/ft, 4W/ft, 6W/ft, 7W/ft, 8W/ft, 9W/ft. (3W & 4W have a minimum length of 3'). For other wattages consult factory.

Emergency circuit via remote inverter or auxiliary emergency power supply (by others).

This product complies with IEEE C62.41 for surge endurance up to 2.5KV. Amerlux® recommends using additional surge protection with this unit (supplied by others), surge and over voltage damage is not covered under warranty.

EMC-PF - Emergency circuit requires power feed to be located in last fixture section for continuous runs. For other locations consult factory. Not available for individual (IND) configuration.

PF - Extra power feed for additional circuiting. Not available for individual (IND) configuration.

Housing Finish

All painted surfaces are premium powder coated baked on for maximum durability and color stability.

HW - High reflective matte White

BT - Black Texture

ST - Silver Texture

For special paint colors supply RAL and/or actual paint chip for factory consultation.

Configurations/Lengths

Nominal Length Straights:

NOTE: IND and CON are built to nominal lengths based on the increment of a single cell (1.33"). Please refer to shop drawings for final dimensions.

IND - Individual fixtures are made of single standard lengths of 2 ft to 8 ft. These are stand alone fixtures with matching End Caps, supplied with the mounting hardware. Lengths less than 4' may have restrictions based upon wattage, lengths, drivers or other options.

CON - Continuous runs, > 8'. Runs made from standard lengths have End Caps at the beginning and end of run. Runs > 60' may require second power feed. Each housing has factory installed alignment pins. Mating fixtures are easily aligned and joined. Wiring is made fast and positive with molded quick connectors.

Exact Length Straights:

NOTE: CUS are built to the exact ordered length and may require blank plates. Please refer to shop drawings for final dimensions.

CUS - Custom made to measure runs are made to nearest 1/8" of customer supplied field measurements or drawings. Custom lengths use the same hardware for hairline joining.

Standard Patterns:

Note: Patterns may require blank plates at the ends, depending on length.

PXX - Standard Patterns consist of 90° corners with standard lengths, continuous runs or made to measure lengths. Depending upon complexity of the pattern drawings may be required from the customer. If ordering please give overall lengths.

A'-B'-PLL - L Left - (1) 90° Corner (2) segments. Specify overall segments: A' & B'

A'-B'-PLR - L Right - (1) 90° Corner (2) segments. Specify overall segments: A' & B'

A'-B'-PR - Rectangle - (4) 90° Corners joining (4) segments. Specify overall segments: A' & B'

A'-B'-C'-PU - U shape - (2) 90° Corners joining (3) segments. Specify overall segments: A', B', & C'

A'-B'-C'-PZ - Z shape - (2) 90° Corners joining (3) segments. Specify overall segments: A', B', & C'

See page 6 for layouts.

Mounting

The Comfort Vue Direct/Indirect is intended for pendant mounting.

Pendant Mount-ASWxx - Direct/Indirect pendant mounted in center of ceiling tile or gypsum board ceiling (standard) i.e. ASWxx. Or if canopy is installed on a grid Tee runner add, **T** i.e. ASWxxT.

Cable is stranded stainless steel wire. All fittings are protected against rust and corrosion. Canopies are 5" x 1/4" die formed painted steel. Adjustment mechanism allows for infinite height adjustment. Amerlux recommends the required feed and non-feed suspensions based upon length and electrical options. Options include: color of canopy and power cord (black or white), length 4', 10' or 20', and mounting condition, in center of ceiling tile and in gypsum board ceiling (standard) i.e. ASWxx. Or if canopy is installed on a grid Tee runner add, **T** i.e. ASWxxT

Certifications

Approved to UL standards for damp locations as tested by CSA
Intended for indoor use only

Warranty

Amerlux's 5 year limited warranty. Please consult Amerlux website for details.

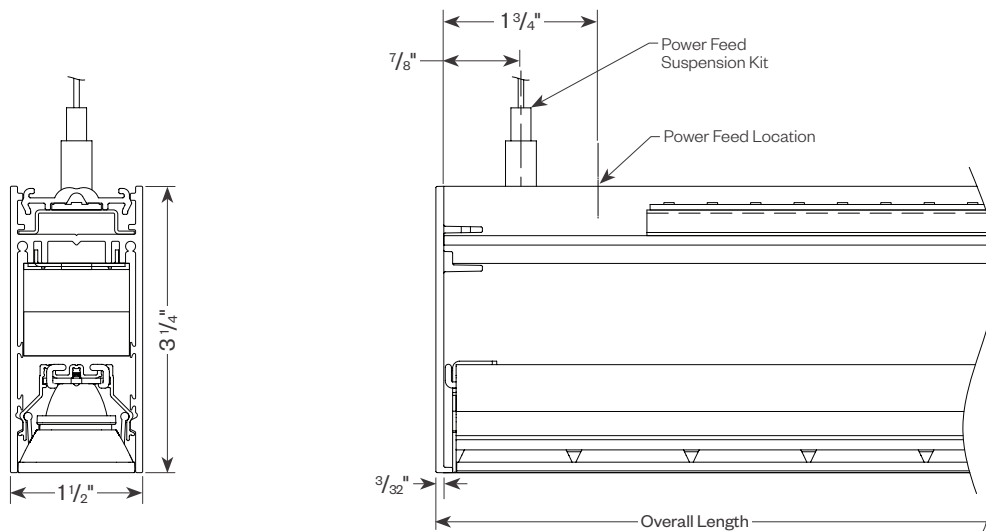


PROJECT:

TYPE:

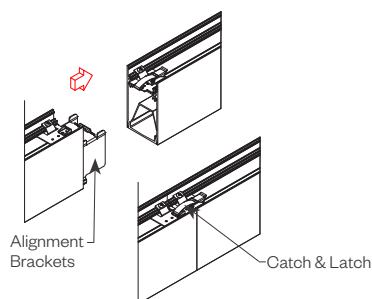
Product Details

Pendant



Tool-less Joining

Line up the two housings using the alignment brackets.
Secure them together by using the Catch & Latch
System on the top of the extrusion.

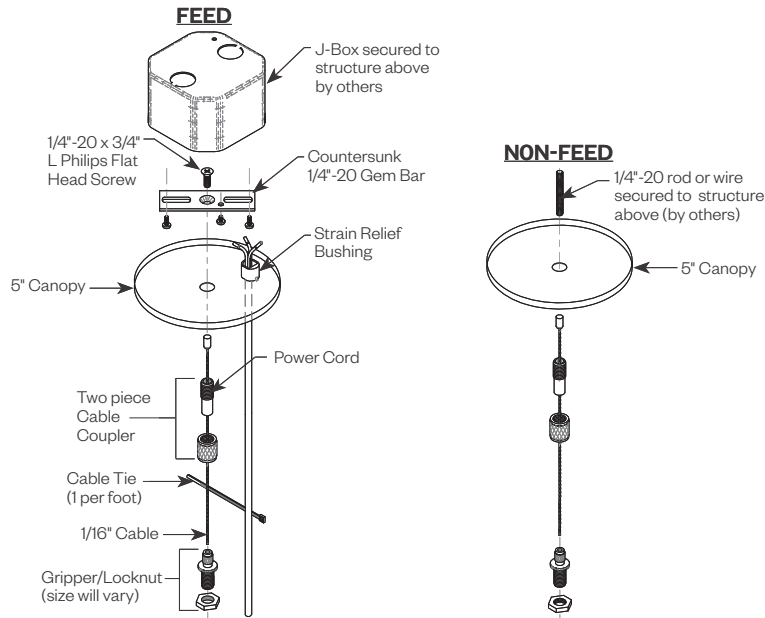




PROJECT:

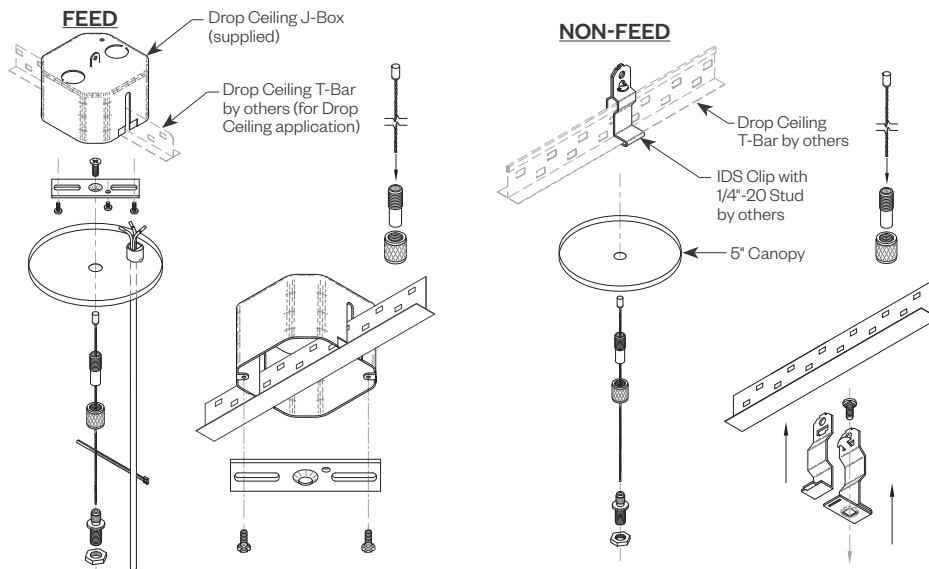
TYPE:

Cable Kit Suspension - Ceiling or Gypsum Board (ASW04, ASW10, ASW20, ASB04, ASB10, ASB20)



Cat#	Length	Cord/Canopy	Application
ASW04	4'	white/white	ceiling tile/gypsum
ASW10	10'	white/white	ceiling tile/gypsum
ASW20	20'	white/white	ceiling tile/gypsum
ASB04	4'	black/black	ceiling tile/gypsum
ASB10	10'	black/black	ceiling tile/gypsum
ASB20	20'	black/black	ceiling tile/gypsum
ASW04T	4'	white/white	ceiling tee
ASW10T	10'	white/white	ceiling tee
ASW20T	20'	white/white	ceiling tee
ASB04T	4'	black/black	ceiling tee
ASB10T	10'	black/black	ceiling tee
ASB20T	20'	black/black	ceiling tee

Tee Grid or Screw Slot (ASW04T, ASW10T, ASW20T, ASB04T, ASB10T, ASB20T)





PROJECT:

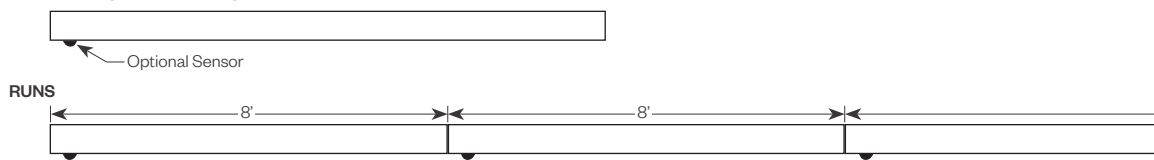
TYPE:

Optional Sensor/RF Node

Amerlux® has partnered with control companies to create building environments that are safer, and smarter, than ever before. At the heart of our partnership is intelligent RF nodes and Smart Sensor, the most advanced digital wireless communication and sensors available today. Integrated into Amerlux products.

Minimum run length is 3' for wireless sensor and RF node.

INDIVIDUAL (MIN 3' LENGTH)



Note: Selecting the sensor option reduces the lit length by a nominal 6". Please refer to shop drawings for final dimensions.

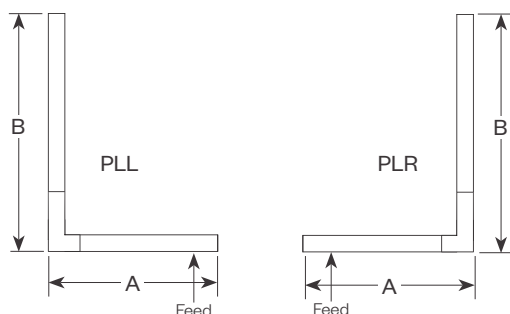
Patterns

Standard Patterns

All corners are standard 90°, standard length legs.

Continuous runs must be the same length in pairs for closed configuration.

Patterns may require blank plates at the ends, depending on length.

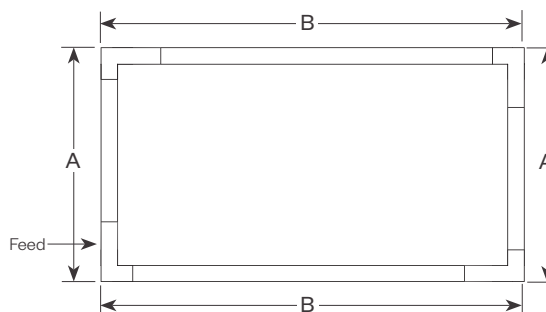


PLL - L Left, (2) straights + (1) 90° corner, leg right

PLR - L Right, (2) straights + (1) 90° corner, leg left

Provide overall lengths: A' & B'

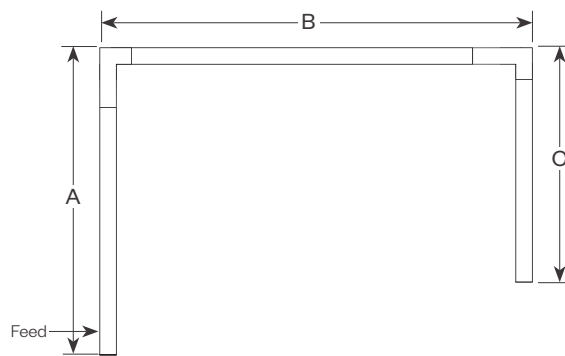
Nomenclature: A-B-PLL A-B-PLR



PR - Closed Rectangle, (4) straight lengths + (4) 90° corners

Provide overall lengths: A' & B'

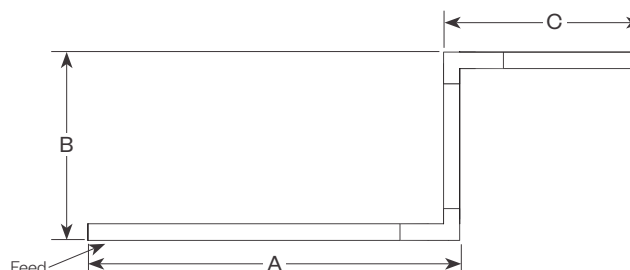
Nomenclature: A-B-PR



PU - Open U, (3) straight lengths + (2) 90° corners

Provide overall lengths: A', B' & C'

Nomenclature: A-B-C-PU



PZ - Open Z, (3) straight lengths + (2) 90° corners

Provide overall lengths: A', B' & C'

Nomenclature: A-B-C-PZ





PROJECT:

TYPE:

Performance Data - Direct

Multiplying Factors: (Multiplying Factor is based on 3500K, 90CRI 120V IES file on website)

Wattage:	3W	4W	5W	6W	7W	8W	9W	10W
Factor:	0.32	0.42	0.51	0.60	0.70	0.80	0.89	1.0

Louver:	White	Chrome
Factor:	1.03	1.01

CCT:	2700K, 90CRI	3000K, 90CRI	3500K, 90CRI	4000K, 90CRI
Factor:	0.91	0.96	1.0	1.04

Unified Glare Rating:

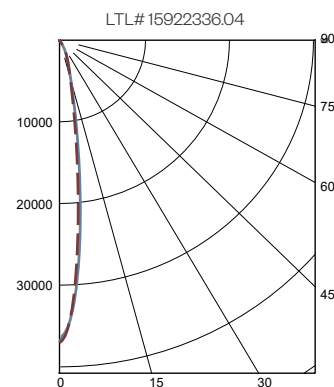
Louver:	Black	White	Chrome
UGR:	<5.2	<5.3	<5.3

Tested with 50° beam, 3500K, 90CRI, 10W/ft.
UGR values calculated using UGR table method.

Spot 15°

Ordered Wattage/Ft	Black Louver			White Louver			Chrome Louver		
	Actual Wattage/Ft	Lumens per Ft	LPW	Actual Wattage/Ft	Lumens per Ft	LPW	Actual Wattage/Ft	Lumens per Ft	LPW
3	3.02	330	109	3.02	340	112	3.02	333	110
4	3.95	433	110	3.95	446	113	3.95	437	111
5	5.01	525	105	5.01	541	108	5.01	530	106
6	6.00	618	103	6.00	637	106	6.00	624	104
7	6.98	721	103	6.98	743	106	6.98	728	104
8	8.00	824	103	8.00	849	106	8.00	832	104
9	9.00	917	102	9.00	944	105	9.00	926	103
10	10.10	1030	102	9.98	1061	106	9.98	1040	104

Data is based on 3500K, 90+ CRI

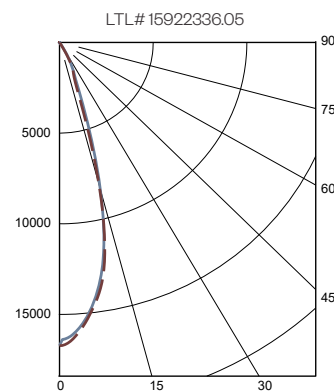


Polar Curve based on Black Louver,
10W/ft, 3500K, 90CRI

Flood 30°

Ordered Wattage/Ft	Black Louver			White Louver			Chrome Louver		
	Actual Wattage/Ft	Lumens per Ft	LPW	Actual Wattage/Ft	Lumens per Ft	LPW	Actual Wattage/Ft	Lumens per Ft	LPW
3	3.02	340	112	3.02	350	116	3.02	343	114
4	3.95	446	113	3.95	459	116	3.95	450	114
5	5.01	541	108	5.01	557	111	5.01	547	109
6	6.00	637	106	6.00	656	109	6.00	643	107
7	6.98	743	106	6.98	765	110	6.98	750	108
8	8.00	849	106	8.00	874	109	8.00	858	107
9	9.00	944	105	9.00	973	108	9.00	954	106
10	10.10	1061	105	9.98	1093	110	9.98	1072	107

Data is based on 3500K, 90+ CRI

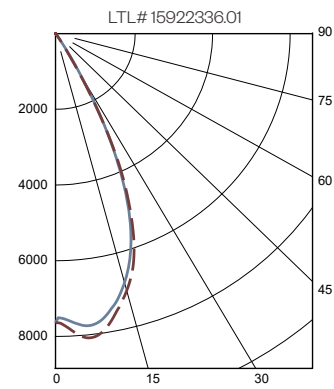


Polar Curve based on Black Louver,
10W/ft, 3500K, 90CRI

Wide Flood 50°

Ordered Wattage/Ft	Black Louver			White Louver			Chrome Louver		
	Actual Wattage/Ft	Lumens per Ft	LPW	Actual Wattage/Ft	Lumens per Ft	LPW	Actual Wattage/Ft	Lumens per Ft	LPW
3	3.02	330	109	3.02	368	122	3.02	362	120
4	3.95	433	110	3.95	483	122	3.95	475	120
5	5.01	525	105	5.01	587	117	5.01	577	115
6	6.00	618	103	6.00	691	115	6.00	679	113
7	6.98	721	103	6.98	806	115	6.98	792	113
8	8.00	824	103	8.00	921	115	8.00	905	113
9	9.00	917	102	9.00	1024	114	9.00	1007	112
10	10.10	1119	111	9.98	1151	115	9.98	1131	113

Data is based on 3500K, 90+ CRI



Polar Curve based on Black Louver,
10W/ft, 3500K, 90CRI



PROJECT:

TYPE:

Performance Data - Indirect

Multiplying Factors: (Multiplying Factor is based on 3500K-83 120V IES file on website)

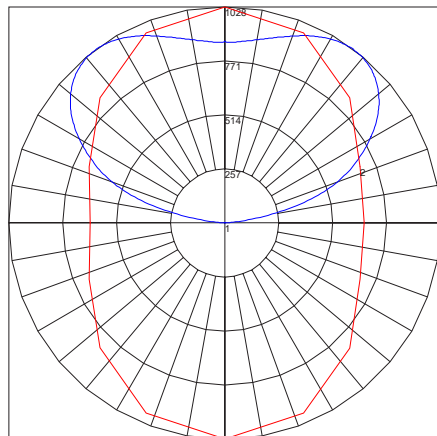
Wattage:	3W	4W	5W	6W	7W	8W	9W	10W
Factor:	0.31	0.42	0.53	0.63	0.72	0.81	0.90	1.0

CCT:	2700K-90+	3000K-90+	3500K-90+	4000K-90+
Factor:	0.94	0.98	1.0	1.04

COMVUE INDIRECT BATWING LENS 10W 3500K 90CRI 4FT

Total Watts: 34; Total Lumens: 3395

Source: 88 White LED's



Maximum Candela = 1027.7 Located At Horizontal Angle = 90, Vertical Angle = 142
1 - Vertical Plane Through Horizontal Angles (90 - 270) (Through Max. Cd.)
2 - Horizontal Cone Through Vertical Angle (142) (Through Max. Cd.)

ZONAL LUMEN SUMMARY

Zone	Lumens	%Fixt
0-40	0	0.0
0-60	0	0.0
0-90	0	0.0
90-180	3395	100.0

Efficacy = 101 Lumens /Watt

COEFFICIENTS OF UTILIZATION

Effective Floor Cavity Reflectance 20%

RC	80			
RW	70	50	30	10
ROR				
0	95	95	95	95
1	87	83	79	76
2	79	72	66	62
3	72	63	56	51
4	65	56	48	43
5	60	49	42	36
6	55	44	36	31
7	50	39	32	27
8	47	35	28	23
9	43	32	25	20
10	40	29	22	18

Note: Values expressed as percent of total lumen output delivered to the task surface.



PROJECT:

TYPE:

Dimming Compatibility

Amerlux® Comfort Vue fixtures are compatible with all major dimming protocols prevalent in the United States. Please see below for general compatibilities and wiring diagrams. Amerlux recommends testing your unique dimming configuration as the exact full configuration (*Dimmer, Fixture Quantity, Voltage, etc*) may affect dimming performance.

--- NOTE: INFORMATION BELOW IS FOR WIRED DIMMERS ONLY. FOR WIRELESS DIMMERS, CONSULT FACTORY ---

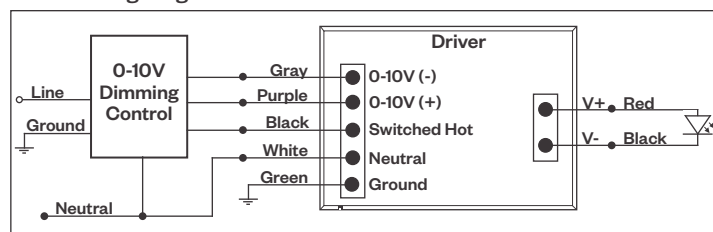
0-10V - DIMMING (Standard)

Integrates into a variety of building management and daylighting controls

Notes:

- 120V or 277V*
- Dims down to 1% light output
- Requires interface to turn off power to driver
- Consult Dimming manufacturer for installation instructions - **DO NOT SHARE NEUTRALS!**

0-10V Wiring Diagram



Compatible Dimmers*:

Wall Box			Central System
Lutron:	Wattstopper:	Leviton:	Lutron Grafikx Eye with GRX-TV1 Interface
Diva - DVSTV	ADF-120277	Renoir II	
Maestro - MS-Z101			
Nova-T - NTSTV-DV			

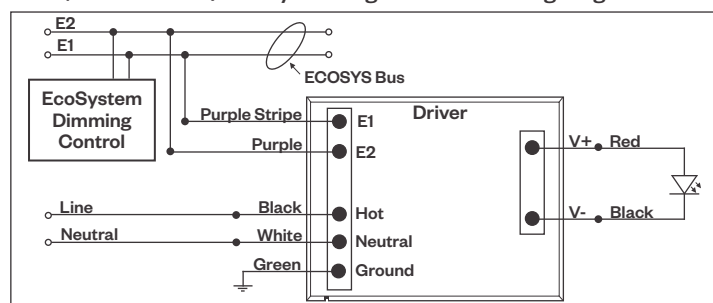
LUTRON LDE1 DIMMING

Integrates into Lutron EcoSystem building management

Notes:

- 120VAC or 277VAC*
- Dims down to 1% Soft-On/Fade-to-Black
- EcoSystem Control
- Consult Dimming manufacturer for installation instructions - **DO NOT SHARE NEUTRALS!**

LDE1 (HILUME-H-ECO) EcoSystem Digital Control Wiring Diagram



Compatible Dimmers*:

Lutron ECO System	Central System
Pow Pak Dimming Modules	Lutron EcoSystem compatible controls
Energi Savr Node	
Grafik Eye QS/Homeworks	
QS Control Unit	
Quantum Hub	
Homeworks QS/My Room	

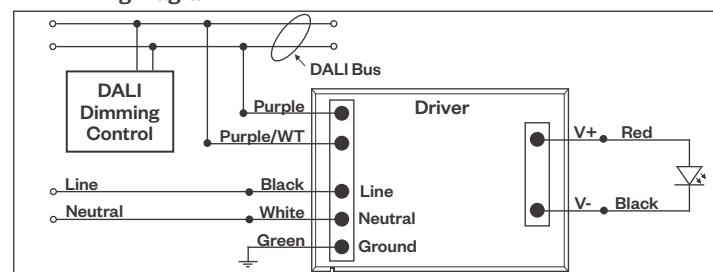
DALI - DALI DIMMING 120V-277V

Digital control protocol allows individual fixture control

Notes:

- 120VAC - 277VAC*
- Dims down to 1% light output in most cases

DALI Wiring Diagram



Notes:

* Driver is 277VAC dimmable with appropriate dimmer (*by others*). All provided wiring diagrams show 120VAC wiring colors and method. Please refer to 277VAC dimmer installation instructions for 277VAC wiring diagrams.

* The absence of a dimmer from the lists above does not imply incompatibility. Please consult factory for compatibility inquiries.



PROJECT:

TYPE:

Emergency Fixture with Built-In Battery Pack

Emergency fixture with built-in battery pack (**EMB**) wiring:

Note: EMB not available on lengths under 4'.

