

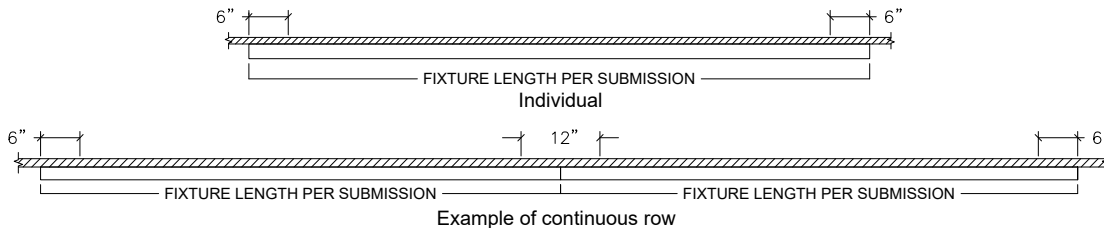
**WARNING - RISK OF FIRE AND ELECTRICAL SHOCK. FIXTURE MUST BE INSTALLED BY A QUALIFIED ELECTRICIAN ONLY. FIXTURE IS INTENDED FOR INSTALLATION IN ACCORDANCE WITH THE NATIONAL ELECTRICAL CODE, LOCAL AND FEDERAL SPECIFICATIONS. DISCONNECT POWER AT ELECTRICAL PANEL BEFORE SERVICING.**  
**RETAIN THESE INSTRUCTIONS FOR MAINTENANCE REFERENCE.**

#### Pre-installation Note:

Supplied by others: - feed conduits

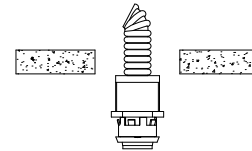
Supplied by Amerlux: - pre-drilled mounting points @ 6" from ends of fixture

Suggested suspension points for fixtures are:



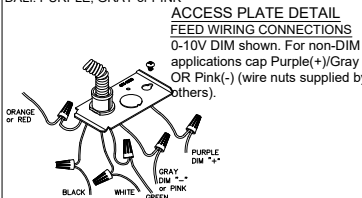
Refer to general contractor/ electrician layout for proper location of mounting points/ locations for feed conduits.

**1. Install feed conduit(s) - Make sure fixture can sit flush with ceiling.**

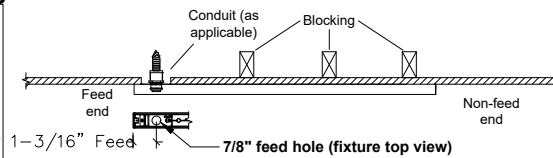


#### 2. Individual and Beginning of Run Install-

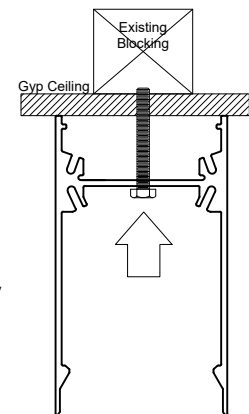
Other Wiring (not Shown):  
LUTRON 3-WIRE DIM-HOT: ORANGE or RED  
LUTRON ECO: PURPLE, GRAY or PINK  
DALI: PURPLE, GRAY or PINK



ACCESS PLATE DETAIL  
FEED WIRING CONNECTIONS  
0-10V DIM shown. For non-DIM applications cap Purple(+) Gray OR Pink(-) (wire nuts supplied by others).

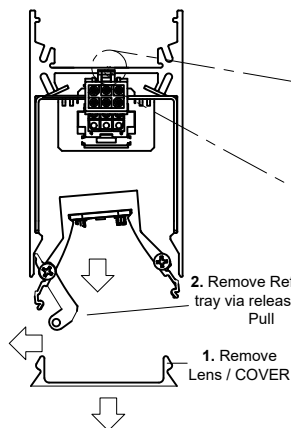


**Note - Fixture mounting points are pre-drilled 6" in from ends of fixtures. If alternate mounting points are req'd, drill & mount as necessary as shown here.**

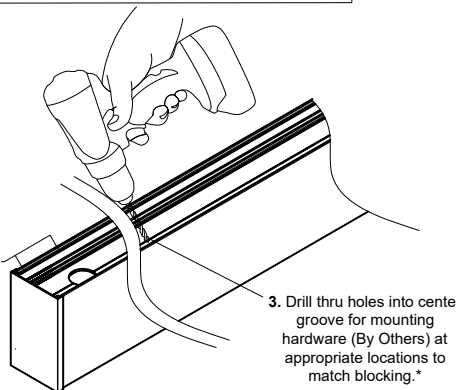


4. Secure fixture to structure. (Hardware by others)

5. Re-assemble Fixture (IND Only. For Runs, continue to other side)

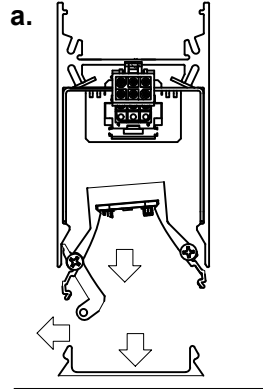


Drill Groove 2" To Power Feed

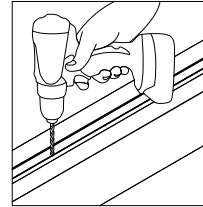


3. Drill thru holes into center groove for mounting hardware (By Others) at appropriate locations to match blocking.\*

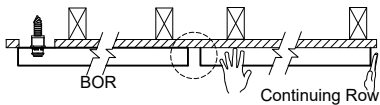
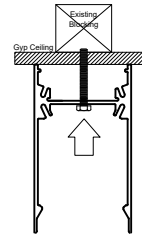
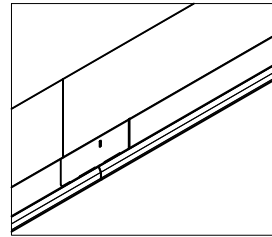
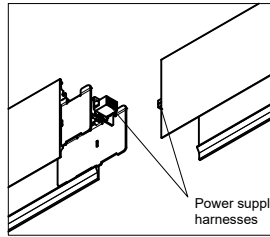
**3. Hang Continuing Fixtures - After the BOR has been installed:**



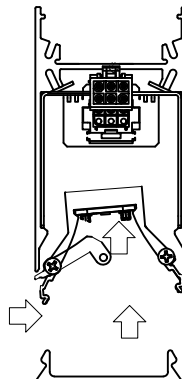
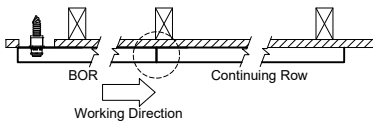
**Prep Fixture for Mounting** - Remove reflector tray assembly & drill holes in appropriate mounting locations if necessary (per contractor)\*



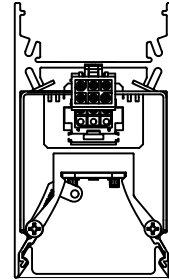
**b. Join Fixtures Together**  
- Use the aligning spline and secure to ceiling via mounting hardware (By others)



**c. Re-Assembly and Power** - Install BoR reflector tray and connect power. Moving down the line (see working direction) connect the next tray to power and install. Repeat until End of Run.



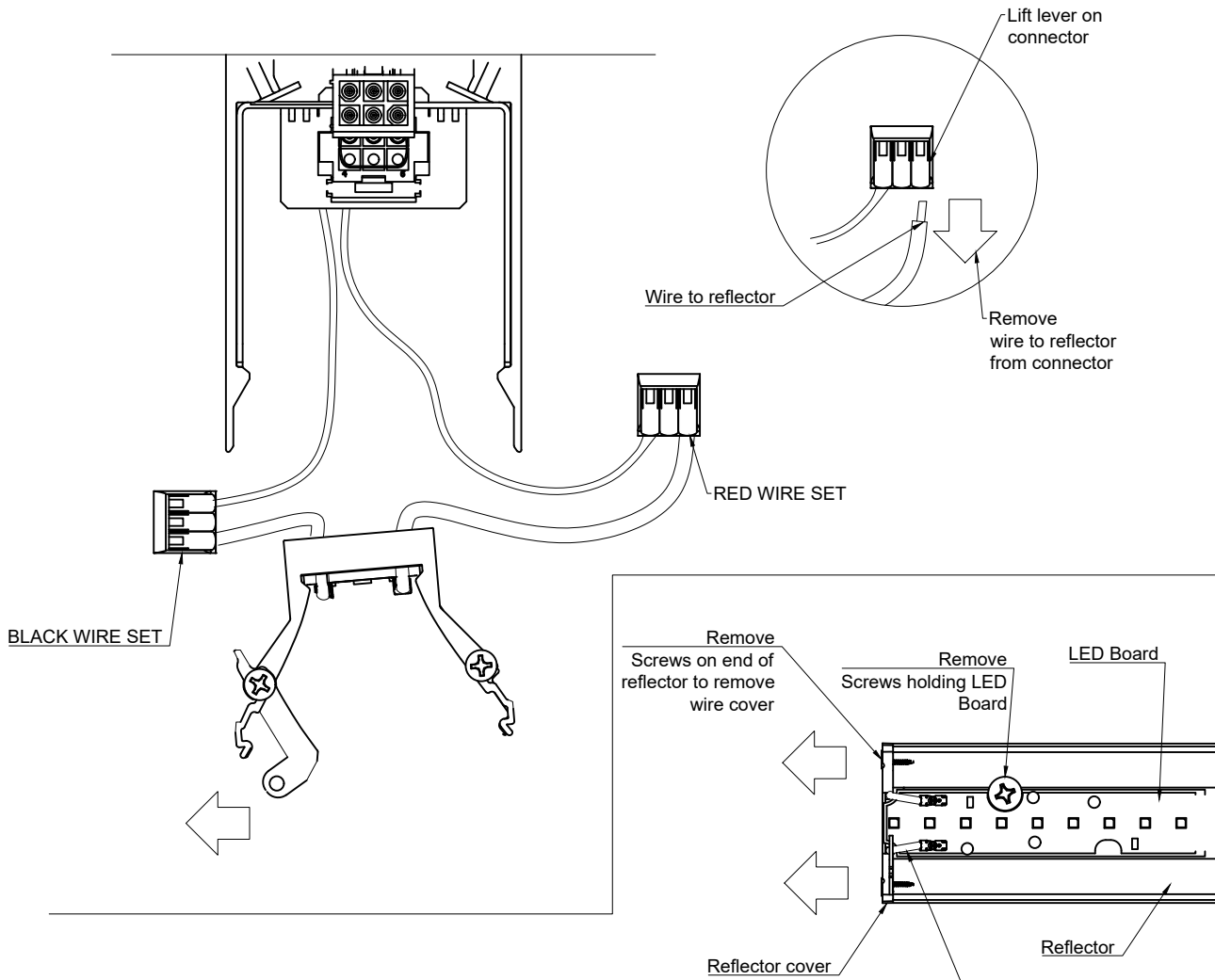
**Re-Assembled Section View**



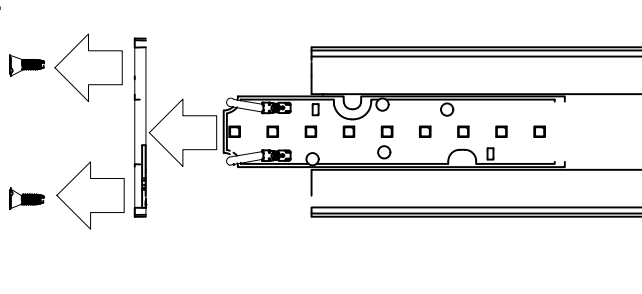
**DISCONNECT ALL ELECTRICAL CONNECTIONS BEFORE SERVICING.**

**Maintenance**

Disconnect reflector by removing wires at wago lever connector.



- 1.) Remove screws from Board and end of Reflector holding down reflector end cover.
- 2.) Slide board out and replace with new board. Board information must be provided to manufacturer when placing new order to deliver correct replacement.
- 3.) Follow steps in reverse to reinstall.



**DISCONNECT ALL ELECTRICAL CONNECTIONS BEFORE SERVICING.**