

# Carisma® 2"

Linear Direct/Indirect



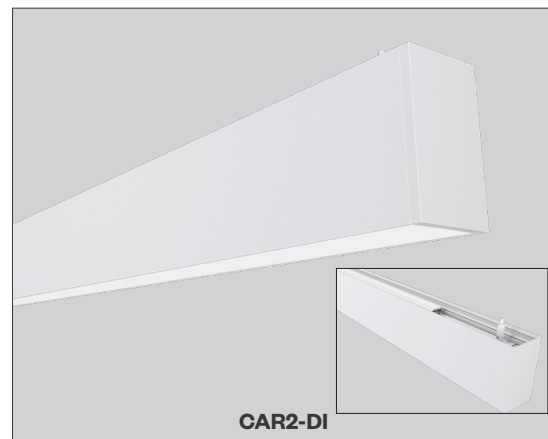
PROJECT:

TYPE:

## Features

Carisma® Pendant is part of a family of architectural linear luminaires that offer excellent performance, quality, visuals and value. A sleek edge-to-edge lens design results in an elegant aesthetic with clean lines. Carisma®'s patent pending design includes an integrated optical system that minimizes optical losses, allowing for industry-leading efficacy that meets the stringent requirements for DLC Listing (*DLC Listing pending*). A tailored end cap design and Amerlux's trusted catch-and-latch mechanism prevents all light leakage.

The Carisma® Pendant offers luminaires with 2" and 3" wide apertures, delivering seamless lighting as discrete individual fixtures, continuous rows or patterns. Carisma® can be specified to the nearest 1/8" and is available in pendant, surface, wall and recessed mounting options, providing designers with the versatility to light up a space with their Carisma®.



## Product Overview

Type:	Direct/Indirect distribution with Pendant or Wall Mounting Performance lens down/Batwing lens up
Wattage:	5W/ft, 10W/ft (or specify wattage between 3W/ft and 10W/ft)
Color Temp:	2700K*, 3000K, 3500K, 4000K (*90+ CRI only)
CRI:	80+ typ. or 90+ typ.
Dimming (wired):	0-10V, 1% dim (standard) Lutron LDE1 Hi-lume® 1% Soft-On/Fade-to-Black DALI, 1% dim
Dimming (wireless):	Lutron Athena (integral wireless RF node) BubblyNet Bluetooth

## Certifications



## Fixture Summary

### Performance Data

Wattage per Foot	Lens Direct	Delivered Lumens Direct	LPW	Lens Indirect	Delivered Lumens Indirect	LPW
5	PL	2519	126.8	BAT	2624	142
	ASY	2693	135.6	BAT	2624	142
10	PL	4755	122.8	BAT	4979	135.6
	ASY	5408	128.6	BAT	4979	135.6

Data is based on 4' fixture, 3500K-80 120V IES files available on website.

### Electrical Data

Wattage per Foot	Voltage	4'		8'	
		System Watts	Amps	System Watts	Amps
5/5	120V	38.3	0.32	78.4	0.65
	277V	37.3	0.15	78.3	0.30
10/10	120V	75.4	0.63	154.9	1.30
	277V	75.4	0.29	152.0	0.56

Electronic multi-volt (120-277VAC), constant current LED driver.

### Runs

Individual Runs: 2' - 8' (specify in 1' increments).

Continuous Runs: > 8' (specify to the nearest foot).

Custom: Made to measure lengths available (specify to nearest 1/8" of field dimensions). Requires approval drawings. Added cost & lead time.

### Standard Patterns

					Wall to Ceiling	Custom
Yes	Yes	Yes	Yes	Yes	No	No

PROJECT:

TYPE:

### Ordering Information

CAR2-DI				120/277							
1	2	3	4	5	6	7	8	9	10	11	12
1	Model	2	Optics (select 1 for direct & 1 for indirect)		3	Mounting					
	CAR2-DI	Direct PL performance lens ASY asymmetric lens Indirect BAT batwing lens			Pendant Mount (aircraft cable suspension) ASW04 through ceiling tile or gyp board, white, 4* ASW10 through ceiling tile or gyp board, white, 10' ASW20 through ceiling tile or gyp board, white, 20' ASB04 through ceiling tile or gyp board, black, 4* ASB10 through ceiling tile or gyp board, black, 10' ASB20 through ceiling tile or gyp board, black, 20' ASW04T over ceiling tee, white, 4* ASW10T over ceiling tee, white, 10' ASW20T over ceiling tee, white, 20' ASB04T over ceiling tee, black, 4* ASB10T over ceiling tee, black, 10' ASB20T over ceiling tee, black, 20' * 4' (xxx04) is standard length, other lengths are additional charge						
4	Circuiting		5	Wattage (per foot, direct/indirect)		6	Color Temp		7	Finish	
	1 single circuit, direct & indirect are on the same circuit  2 dual circuit, direct & indirect controlled independently  Note: 3' & below lengths must use single circuit.		Standard 5/5  10/10 5/10 10/5 Optional Specify both direct & indirect wattages, each between 3 & 10 W/ft.  Note: If specifying different wattage for direct & indirect, then must specify dual circuit,		80+ CRI 30 3000K-80+ 35 3500K-80+ 40 4000K-80+		90+ CRI 279 2700K-90+ 309 3000K-90+ 359 3500K-90+ 409 4000K-90+		HW high reflectance matte white BT black texture ST silver texture For other RAL color, consult factory		
8	Voltage	9	Length		10	Configuration					
	120/277	----- X ----- X ----- Length A Length B Length C - all patterns - all patterns - PU - IND - PR (2 lengths of 2) - PZ - CON - CUS		IND <sup>1</sup> individual fixture, 2' to 8' in 1' increments CON continuous run > than 8', specify to nearest foot CUS custom made to measure lengths (specify to nearest 1/8" of field dimensions) Standard Patterns (see pg 6 for details) PLL L left, (2) straights + (1) 90° corner, leg right PLR L right, (2) straights + (1) 90° corner, leg left PU U shape, (3) straight lengths + (2) 90° corners PR Rectangle shape, (4) straight lengths + (4) 90° corners PZ Z shape, (3) straight lengths + (2) 90° corners							
11	Drivers/Controls				12	Options/Accessories					
	Wired 0-10V 1% electronic dimming , multi-volt 120-277VAC constant current driver (standard). HILUME-H-ECO Lutron LDE1 Hi-lume® 1% dim Soft-On/Fade-to-Black DALI DALI dimming 120-277VAC, 1% dim Wireless AWN-R-WH-SR Lutron Athena wireless node, RF only, white, D4i/DALI-2 AWN-R-BL-SR Lutron Athena wireless node, RF only, black, D4i/DALI-2 AWN-R-WH-010 Lutron Athena wireless node, RF only, white, 0-10V AWN-R-BL-010 Lutron Athena wireless node, RF only, black, 0-10V AWN-R-OCC-WH-SR Lutron Athena wireless node, Occupancy & Daylight sensor, white, D4i/DALI-2 AWN-R-OCC-BL-SR Lutron Athena wireless node, Occu pancy & Daylight sensor, black, D4i/DALI-2 AWN-R-OCC-WH-010 Lutron Athena wireless node, Occupancy & Daylight sensor, white, 0-10V AWN-R-OCC-BL-010 Lutron Athena wireless node, Occupancy & Daylight sensor, black, 0-10V BN-BT-OCC-WH-SR BubblyNet Bluetooth node, Occupancy & Daylight sensor, white, D4i/DALI-2 BN-BT-OCC-WH-010 BubblyNet Bluetooth node, Occupancy & Daylight sensor, white, 0-10V				EMC-PF <sup>2</sup> emergency circuit requires power feed located in last fixture section (for other locations consult factory)  PF <sup>2</sup> Extra power feed for additional circuiting EMB emergency battery pack (not available for lengths under 4')						

1 Lengths less than 4' may have restrictions based upon wattage, lengths, drivers or other options.

2 Not available with IND (individual) configuration.

### PROJECT:

### TYPE:

## Specifications

### Construction

Extruded aluminum housing and reflector. Die-cast end caps match fixture body finish.

**Weight:** 2.5 lbs/ft (may vary based on configurations and accessories)

### Optical

#### Direct:

All Direct lenses are snap-in, extruded acrylic, with a maximum length of 8'.

Amerlux's proprietary acrylic lens provides excellent transmission while effectively concealing source image.

**PL** - Performance lens provides high efficiency with controlled lens surface brightness.

**ASY** - Asymmetric throw lens.

#### Indirect:

Extruded acrylic lens with a maximum length of 4'.

**BAT** - Batwing upright lens spreads light directly above fixture. A minimum of 18" distance between ceiling plane and top of fixture is suggested.

### LED

Our LED binning is within 3 MacAdam ellipse. Boards are configured for maximum flexibility resulting in even illumination no matter what the fixture layout. LED boards are easily replaced in the field with just a Phillips screw driver.

**Color Temperature Options:** 2700K\*, 3000K, 3500K, 4000K

**CRI:** 80+, 90+

**R9:** 16 @ CRI 83; **R9:** >50 @ CRI 92

**Life:** 50,000+ hr., > 70% of initial lumens (L70)

**\* Available in 90+ CRI only**

### Electrical

**Wiring:** Individual and "Beginning of Run" (BOR) fixtures are prewired with power cord. All configurations have quick connect power harnesses for row connections.

**1** - Single Circuit, direct & indirect are on the same circuit

**2** - Dual Circuits, direct & indirect controlled independently

**Standard Wattage:** 5W/ft, 10W/ft.

**Optional Wattages:** 3W/ft, 4W/ft, 6W/ft, 7W/ft, 8W/ft, 9W/ft. (3W & 4W have a minimum length of 4'). For other wattages consult factory. Emergency circuit via remote inverter or auxiliary emergency power supply (by others).

**This product complies with IEEE C62.41 for surge endurance up to 2.5KV. Amerlux® recommends using additional surge protection with this unit (supplied by others), surge and over voltage damage is not covered under warranty.**

**EMC-PF** - Emergency circuit requires power feed to be located in last fixture section for continuous runs. For other locations consult factory. Not available for individual (IND) configuration.

**PF** - Extra power feed for additional circuiting. Not available for individual (IND) configuration.

### Finish

All painted surfaces are premium powder coated baked on for maximum durability and color stability.

**HW** - High reflective matte White

**BT** - Black Texture

**ST** - Silver Texture

For special paint colors supply RAL and/or actual paint chip for factory consultation.

### Configurations/Lengths

#### Straights:

**IND** - Individual fixtures are made of single standard lengths of 2 ft to 8 ft (in 1' increments). These are stand alone fixtures with matching End Caps, supplied with the mounting hardware. Lengths less than 4' may have restrictions based upon wattage, lengths, drivers or other options.

**CON** - Continuous runs, > 8' specified to nearest whole foot length in 1' increments. Runs made from standard lengths have End Caps at the beginning and end of run. Runs > 60' may require second power feed. Each housing has factory installed alignment pins. Mating fixtures are easily aligned and joined. Wiring is made fast and positive with molded quick connectors.

**CUS** - Custom made to measure runs are made to nearest 1/8" of customer supplied field measurements or drawings. Custom lengths use the same hardware for hairline joining.

#### Patterns:

**PXX** - Standard Patterns consist of 90° corners with standard lengths (4' to 8' in 1' increments), continuous runs or made to measure lengths. Depending upon complexity of the pattern drawings may be required from the customer. If ordering please give overall lengths.

**A'-B'-PLL** - L Left - (1) 90° Corner (2) segments. Specify overall segments: A' & B'

**A'-B'-PLR** - L Right - (1) 90° Corner (2) segments. Specify overall segments: A' & B'

**A'-B'-PR** - Rectangle - (4) 90° Corners joining (4) segments. Specify overall segments: A' & B'

**A'-B'-C'-PU** - U shape - (2) 90° Corners joining (3) segments. Specify overall segments: A', B', & C'

**A'-B'-C'-PZ** - Z shape - (2) 90° Corners joining (3) segments. Specify overall segments: A', B', & C'

**See page 6 for layouts.**

### Mounting

The Carisma® Direct/Indirect is intended for pendant or wall mounting. For even lighting on ceiling, Amerlux suggests 18" minimum distance from top of fixture to ceiling when pendant mounted.

**Pendant Mount-ASWxx** - Direct/Indirect pendant mounted in center of ceiling tile or gypsum board ceiling (standard) i.e. ASWxx. Or if canopy is installed on a grid Tee runner add, **T** i.e. ASWxxT.

Cable is stranded stainless steel wire. All fittings are protected against rust and corrosion. Canopies are 5" x 1/4" die formed painted steel. Adjustment mechanism allows for infinite height adjustment. Amerlux recommends the required feed and non-feed suspensions based upon length and electrical options. Options include: color of canopy and power cord (black or white), length 4', 10' or 20', and mounting condition, in center of ceiling tile and in gypsum board ceiling (standard) i.e. ASWxx. Or if canopy is installed on a grid Tee runner add, **T** i.e. ASWxxT

**Wall Mount-WM** - Direct/Indirect wall mounted using steel cleat bracket attached to fixture housing and wall bracket with set screws. Two bracket assemblies are used for each length. A third center bracket may be recommended. J-box required at feed locations.

**Please note: Single Circuit is standard, the direct & indirect are on the same circuit. For Dual Circuits, direct & indirect are controlled independently.**

### Options

**EMB** - Emergency battery pack - 10W output power, 90 min of illumination time, up to 1300 lm of initial light output. Illuminated test-switch/charging indicator light is provided. Wattage consumption by EM: 2.5W/ft (4ft fixture), 1.25W/ft (8ft fixture). Request can be made to light up 4ft section on 8ft unit.

### Certifications

Approved to UL standards for damp locations as tested by CSA  
Intended for indoor use only  
DLC Listing pending

### Warranty

Amerlux's 5 year limited warranty. Please consult Amerlux website for details.

# Carisma® 2"

Linear Direct/Indirect

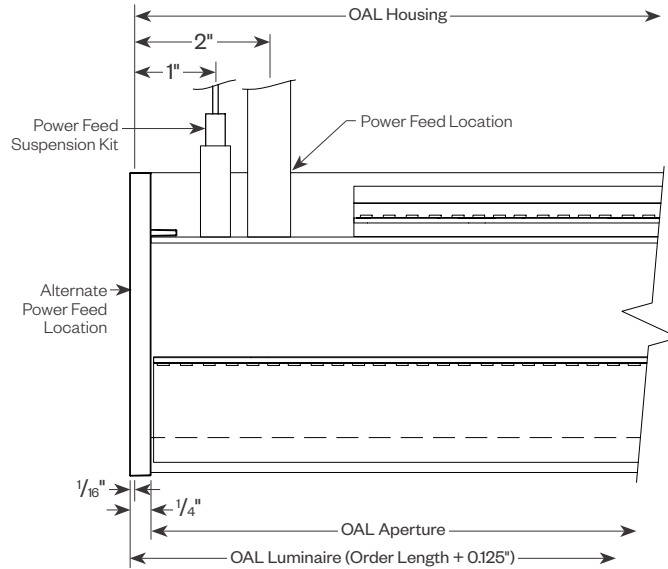
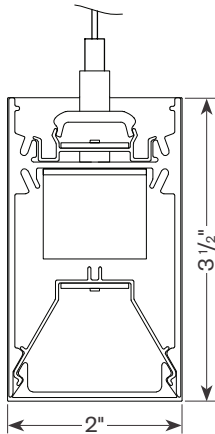


PROJECT:

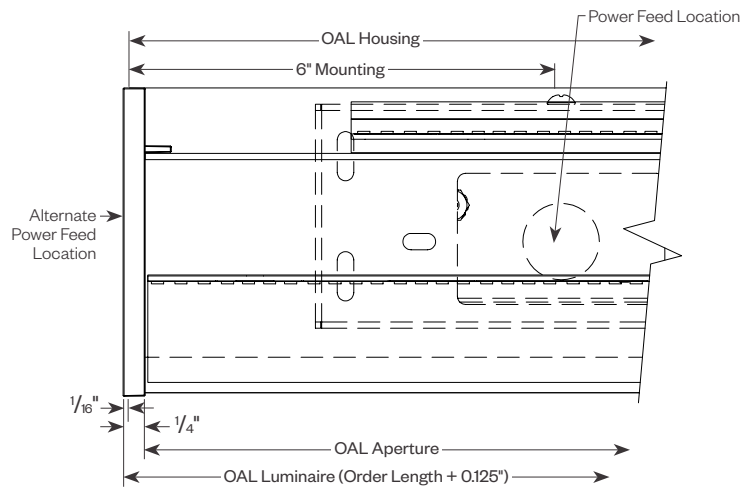
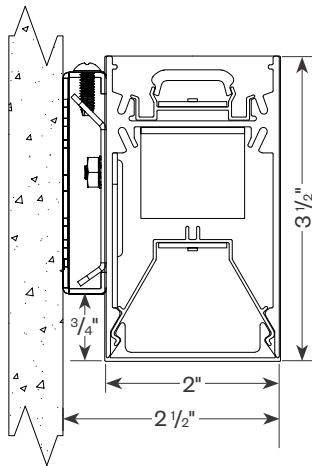
TYPE:

## Product Details

### Pendant

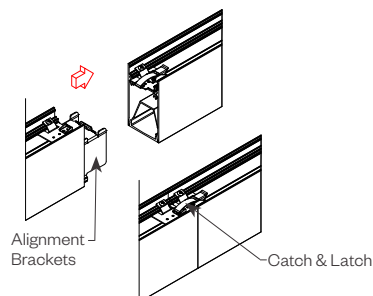


### Wall Mount



## Tool-less Joining

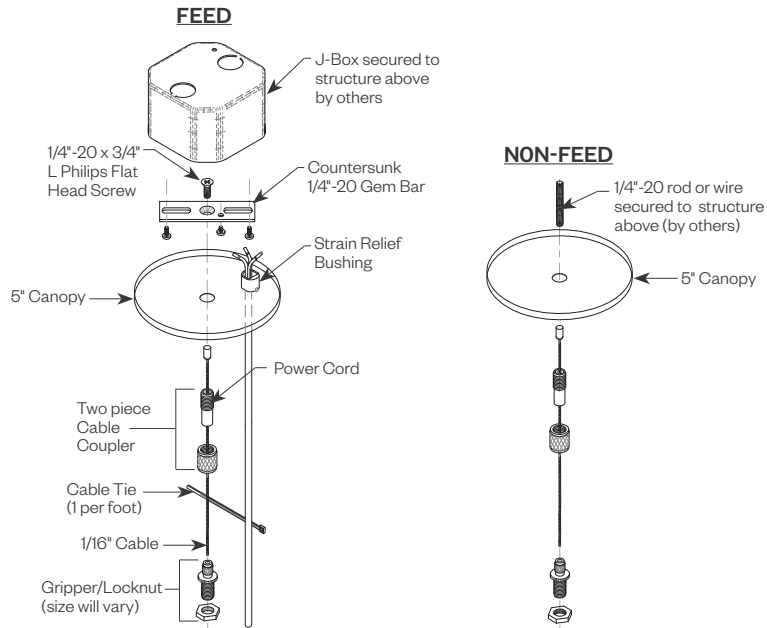
Line up the two housings using the alignment brackets. Secure them together by using the Catch & Latch System on the top of the extrusion.



PROJECT:

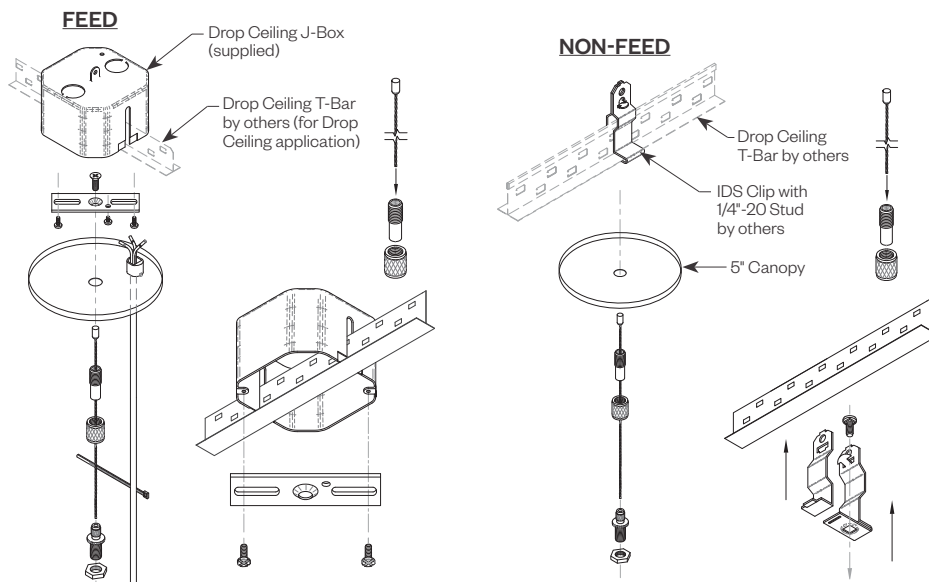
TYPE:

### Cable Kit Suspension - Ceiling or Gypsum Board (ASW04, ASW10, ASW20, ASB04, ASB10, ASB20)



Cat#	Length	Cord/Canopy	Application
ASW04	4'	white/white	ceiling tile/gypsum
ASW10	10'	white/white	ceiling tile/gypsum
ASW20	20'	white/white	ceiling tile/gypsum
ASB04	4'	black/black	ceiling tile/gypsum
ASB10	10'	black/black	ceiling tile/gypsum
ASB20	20'	black/black	ceiling tile/gypsum
ASW04T	4'	white/white	ceiling tee
ASW10T	10'	white/white	ceiling tee
ASW20T	20'	white/white	ceiling tee
ASB04T	4'	black/black	ceiling tee
ASB10T	10'	black/black	ceiling tee
ASB20T	20'	black/black	ceiling tee

### Tee Grid or Screw Slot (ASW04T, ASW10T, ASW20T, ASB04T, ASB10T, ASB20T)



PROJECT:

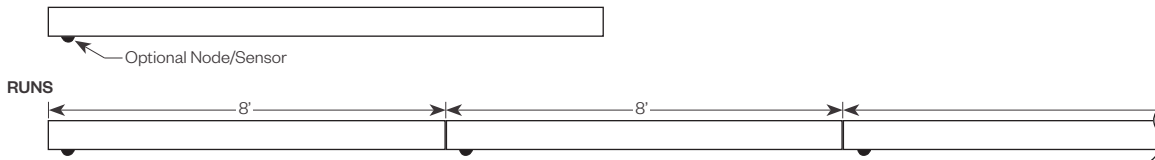
TYPE:

### Optional Sensor/RF Node

Amerlux® has partnered with control companies to create building environments that are safer and smarter, than ever before. At the heart of our partnership is intelligent RF nodes and Smart Sensor, the most advanced digital wireless communication and sensors available today. Integrated into Amerlux products.

Minimum run length is 3' for wireless sensor and RF node.

#### INDIVIDUAL (MIN 3' LENGTH)



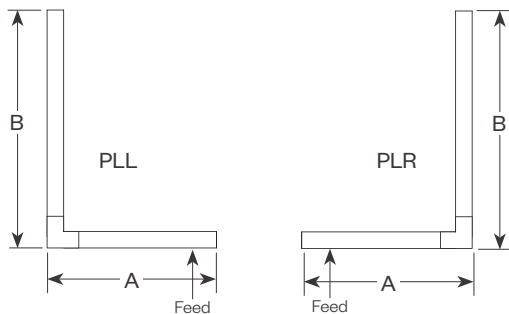
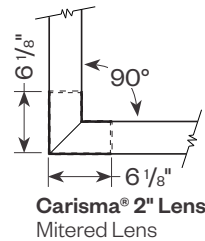
### Carisma® 2" Patterns

#### Standard Patterns

All corners are standard 90°, standard length legs.

Use standard lengths: 4' min to 8' in 1 foot increments.

Continuous runs must be the same length in pairs for closed configuration.

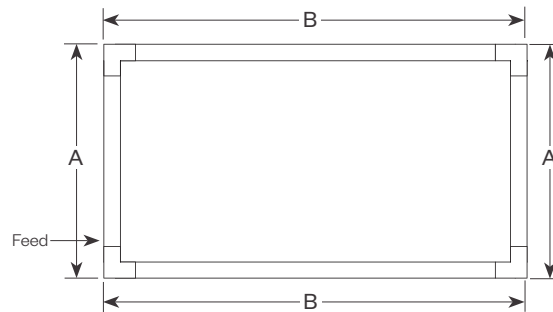


**PLL** - L Left, (2) straights + (1) 90° corner, leg right

**PLR** - L Right, (2) straights + (1) 90° corner, leg left

Provide overall lengths: A' & B'

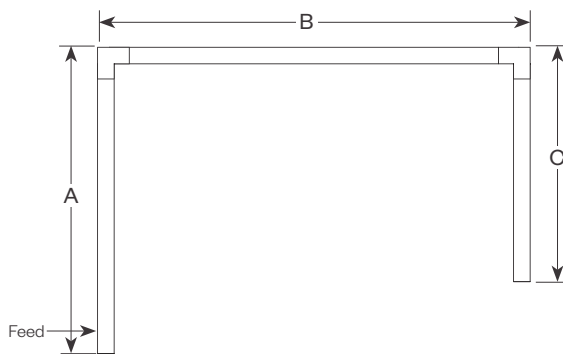
Nomenclature: A-B-PLL A-B-PLR



**PR** - Closed Rectangle, (4) straight lengths + (4) 90° corners

Provide overall lengths: A' & B'

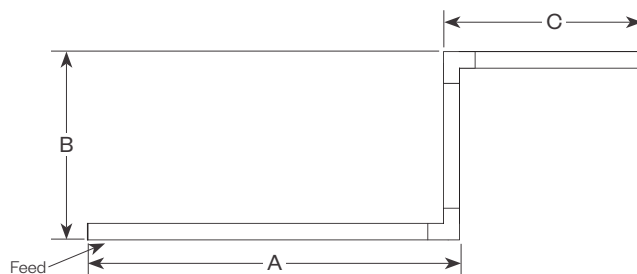
Nomenclature: A-B-PR



**PU** - Open U, (3) straight lengths + (2) 90° corners

Provide overall lengths: A', B' & C'

Nomenclature: A-B-C-PU



**PZ** - Open Z, (3) straight lengths + (2) 90° corners

Provide overall lengths: A', B' & C'

Nomenclature: A-B-C-PZ

# Carisma® 2"

Linear Direct/Indirect



PROJECT:

TYPE:

## Performance Data

**Multiplying Factors:** (Multiplying Factor is based on 3500K-80 120V IES file on website)

Wattage:	3W	4W	5W	6W	7W	8W	9W	10W
Factor:	0.59	0.78	1.0	1.20	1.40	1.60	1.79	1.98

CCT:	3000K-80	3500K-80	4000K-80	2700K-90	3000K-90	3500K-90	4000K-90
Factor:	0.97	1.0	1.02	0.90	0.92	0.92	0.94

### CARISMA® 2" DIRECT/INDIRECT PERFORMANCE LENS 5W/5W 3500K 4FT

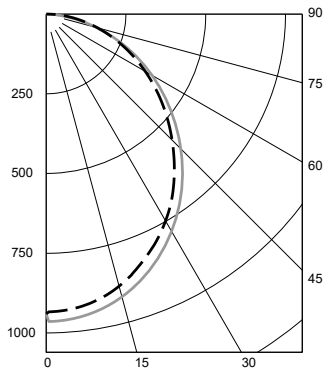
Total Watts: 38

Total Lumens: 5,148

Direct Source: 192 White LEDs; Indirect Source: 168 White LEDs

#### DIRECT

LTL# 14656342.04



#### ZONAL LUMEN SUMMARY

Zone	Lumens	%Fixt
0-40	1154	45.8
0-60	1990	79.0
0-90	2519	100.0
90-180	0	0.0

Efficacy (lumens/watt) = 126.8 lm/W

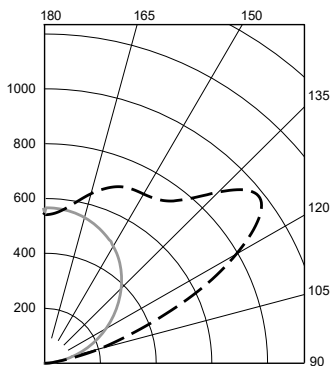
#### COEFFICIENTS OF UTILIZATION

RC	80			
RW	70	50	30	10
ROR				
0	119	119	119	119
1	109	104	100	96
2	99	91	84	78
3	90	80	71	65
4	83	71	62	55
5	76	63	54	48
6	70	57	48	42
7	65	52	43	37
8	61	47	39	33
9	57	43	35	30
10	53	40	32	27

Note: Values expressed as % of total lumen output delivered to the task surface.

#### INDIRECT

LTL# 14626025.02



#### ZONAL LUMEN SUMMARY

Zone	Lumens	%Fixt
0-40	0	0
0-60	0	0
0-90	0	0
90-180	2624	100.0

Efficacy (lumens/watt) = 142.0 lm/W

#### COEFFICIENTS OF UTILIZATION

RC	80			
RW	70	50	30	10
ROR				
0	95	95	95	95
1	87	83	79	76
2	79	72	66	62
3	72	63	57	51
4	65	56	48	43
5	60	49	42	36
6	55	44	36	31
7	50	39	32	27
8	47	35	28	23
9	43	32	25	20
10	40	29	22	18

Note: Values expressed as % of total lumen output delivered to the task surface.

# Carisma® 2"

Linear Direct/Indirect



PROJECT:

TYPE:

## Performance Data (continued)

**Multiplying Factors:** (Multiplying Factor is based on 3500K-80 120V IES file on website)

Wattage:	3W	4W	5W	6W	7W	8W	9W	10W
Factor:	0.30	0.39	0.50	0.61	0.71	0.81	0.91	1.0

CCT:	3000K-80	3500K-80	4000K-80	2700K-90	3000K-90	3500K-90	4000K-90
Factor:	0.97	1.0	1.02	0.90	0.92	0.92	0.94

### CARISMA® 2" DIRECT/INDIRECT PERFORMANCE LENS 10W/10W 3500K 4FT

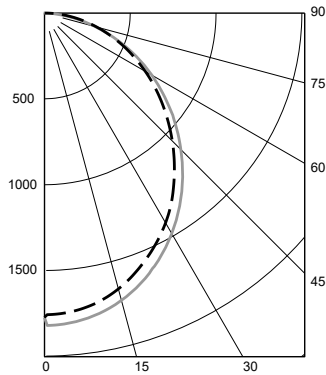
Total Watts: 76

Total Lumens: 9,734

Direct Source: 192 White LEDs; Indirect Source: 168 White LEDs

#### DIRECT

LTL# 14656342.03



#### ZONAL LUMEN SUMMARY

Zone	Lumens	%Fixt
0-40	2177	45.8
0-60	3754	78.9
0-90	4755	100.0
90-180	0	0.0

Efficacy (lumens/watt) = 122.8 lm/W

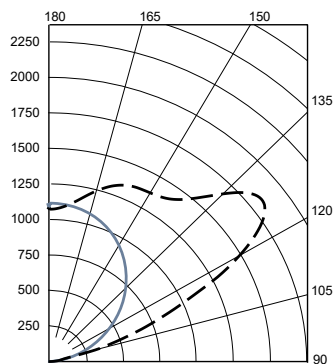
#### COEFFICIENTS OF UTILIZATION

RC	80			
RW	70	50	30	10
RCR				
0	119	119	119	119
1	109	104	100	96
2	99	91	84	78
3	90	80	71	65
4	83	71	62	55
5	76	63	54	48
6	70	57	48	42
7	65	52	43	37
8	61	47	39	33
9	57	43	35	30
10	53	40	32	27

Note: Values expressed as % of total lumen output delivered to the task surface.

#### INDIRECT

LTL# 14626025.01



#### ZONAL LUMEN SUMMARY

Zone	Lumens	%Fixt
0-40	0	0
0-60	0	0
0-90	0	0
90-180	4979	100.0

Efficacy (lumens/watt) = 135.6 lm/W

#### COEFFICIENTS OF UTILIZATION

RC	80			
RW	70	50	30	10
RCR				
0	95	95	95	95
1	87	83	79	76
2	79	72	66	62
3	72	63	57	51
4	65	56	48	43
5	60	49	42	36
6	55	44	36	31
7	50	39	32	27
8	47	35	28	23
9	43	32	25	20
10	40	29	22	18

Note: Values expressed as % of total lumen output delivered to the task surface.



# Carisma® 2"

Linear Direct/Indirect



PROJECT:

TYPE:

## Performance Data (continued)

**Multiplying Factors:** (Multiplying Factor is based on 3500K-80 120V IES file on website)

Wattage:	3W	4W	5W	6W	7W	8W	9W	10W
Factor:	0.59	0.78	1.0	1.20	1.40	1.60	1.79	1.98

CCT:	3000K-80	3500K-80	4000K-80	2700K-90	3000K-90	3500K-90	4000K-90
Factor:	0.97	1.0	1.02	0.90	0.92	0.92	0.94

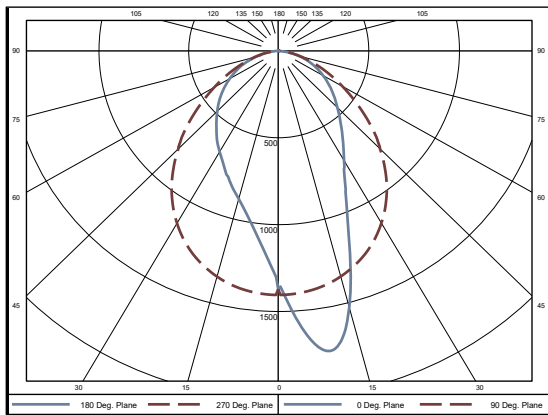
### CARISMA® 2" DIRECT ASYMMETRIC LENS 5W 3500K 4FT

Total Watts: 20

Total Lumens: 2693

Source: 192 White LED's

LTL# 15335267.01



#### ZONAL LUMEN SUMMARY

Zone	Lumens	%Fixt
0-40	1446	53.7
0-60	2259	83.9
0-90	2692	100.0
90-180	0	0.0

Efficacy (lumens/watt) = 135.6 lm/W

#### COEFFICIENTS OF UTILIZATION

RC	80			
RW	70	50	30	10
ROR				
0	119	119	119	119
1	110	105	102	98
2	101	93	87	82
3	93	83	75	69
4	86	74	66	60
5	79	67	58	53
6	74	61	53	47
7	69	56	48	42
8	64	51	43	38
9	60	48	40	34
10	57	44	37	32

Note: Values expressed as % of total lumen output delivered to the task surface.

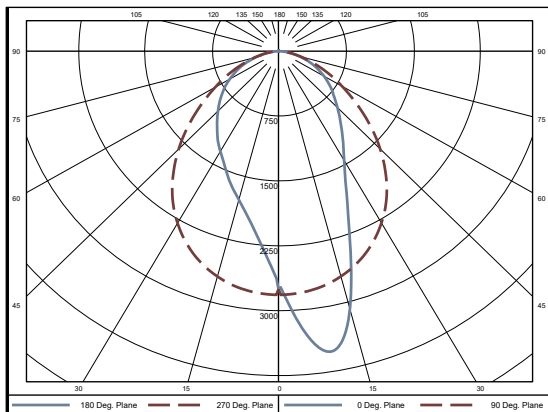
### CARISMA® 2" DIRECT ASYMMETRIC LENS 10W 3500K 4FT

Total Watts: 42

Total Lumens: 5408

Source: 192 White LED's

LTL# 15335267.02



#### ZONAL LUMEN SUMMARY

Zone	Lumens	%Fixt
0-40	2906	53.7
0-60	4535	83.9
0-90	5408	100.0
90-180	0	0.0

Efficacy (lumens/watt) = 128.6 lm/W

#### COEFFICIENTS OF UTILIZATION

RC	80			
RW	70	50	30	10
ROR				
0	119	119	119	119
1	110	105	102	98
2	101	93	87	82
3	93	83	75	69
4	86	74	66	60
5	79	67	58	53
6	74	61	53	47
7	69	56	48	42
8	64	51	43	38
9	60	48	40	34
10	57	44	37	32

Note: Values expressed as % of total lumen output delivered to the task surface.



Delta Intelligent Building Technologies

# Carisma® 2"

Linear Direct/Indirect



PROJECT:

TYPE:

## Dimming Compatibility

Amerlux® Carisma® fixtures are compatible with all major dimming protocols prevalent in the United States. Please see below for general compatibilities and wiring diagrams. Amerlux recommends testing your unique dimming configuration as the exact full configuration (*Dimmer, Fixture Quantity, Voltage, etc*) may affect dimming performance.

--- NOTE: INFORMATION BELOW IS FOR WIRED DIMMERS ONLY. FOR WIRELESS DIMMERS, CONSULT FACTORY ---

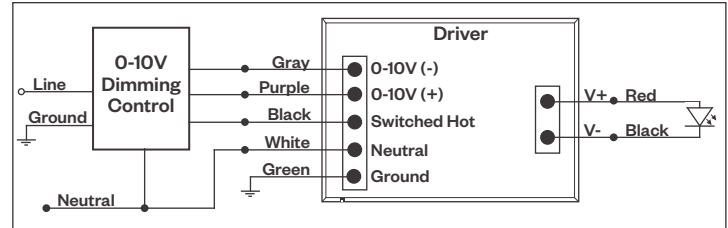
### 0-10V - DIMMING (Standard)

Integrates into a variety of building management and daylighting controls

#### Notes:

- 120V or 277V\*
- Dims down to 1% light output
- Requires interface to turn off power to driver
- Consult Dimming manufacturer for installation instructions - **DO NOT SHARE NEUTRALS!**

### 0-10V Wiring Diagram



#### Compatible Dimmers\*:

Wall Box			Central System
Lutron:	Wattstopper:	Leviton:	Lutron Grafikx Eye with GRX-TV1 Interface
Diva - DVSTV	ADF-120277	Renoir II	
Maestro - MS-Z101			
Nova-T - NTSTV-DV			

### LUTRON LDE1 DIMMING

Integrates into Lutron EcoSystem building management

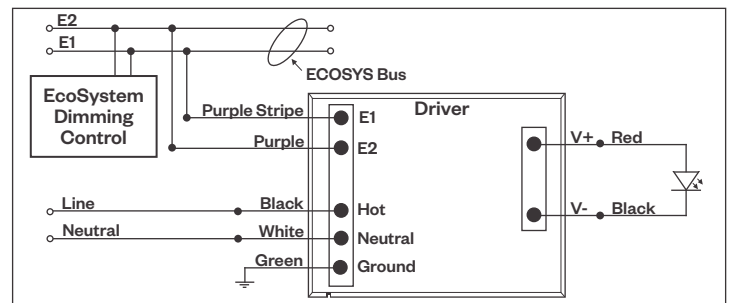
#### Notes:

- 120VAC or 277VAC\*
- Dims down to 1% Soft-On/Fade-to-Black
- EcoSystem Control
- Consult Dimming manufacturer for installation instructions - **DO NOT SHARE NEUTRALS!**

#### Compatible Dimmers\*:

Lutron ECO System	Central System
Pow Pak Dimming Modules	Lutron EcoSystem compatible controls
Energizer Node	
Grafik Eye QS/Homeworks	
QS Control Unit	
Quantum Hub	
Homeworks QS/My Room	

### LDE1 (HILUME-H-ECO) EcoSystem Digital Control Wiring Diagram



#### Notes:

\* Driver is 277VAC dimmable with appropriate dimmer (*by others*). All provided wiring diagrams show 120VAC wiring colors and method. Please refer to 277VAC dimmer installation instructions for 277VAC wiring diagrams.

\* The absence of a dimmer from the lists above does not imply incompatibility. Please consult factory for compatibility inquiries.



Delta Intelligent Building Technologies

# Carisma® 2"

Linear Direct/Indirect



PROJECT:

TYPE:

## Dimming Compatibility (continued)

Amerlux® Carisma® fixtures are compatible with all major dimming protocols prevalent in the United States. Please see below for general compatibilities and wiring diagrams. Amerlux recommends testing your unique dimming configuration as the exact full configuration (*Dimmer, Fixture Quantity, Voltage, etc*) may affect dimming performance.

--- NOTE: INFORMATION BELOW IS FOR WIRED DIMMERS ONLY. FOR WIRELESS DIMMERS, CONSULT FACTORY ---

### DALI - DALI DIMMING 120V-277V

Digital control protocol allows individual fixture control

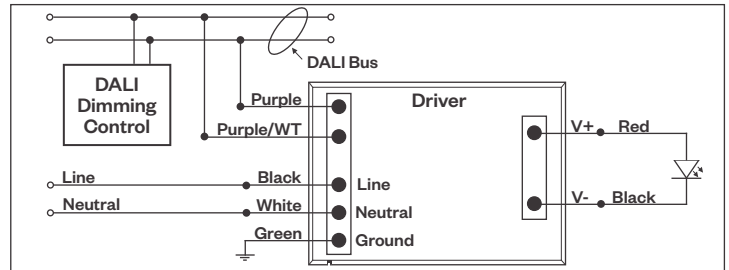
#### Notes:

- 120VAC - 277VAC\*
- Dims down to 1% light output in most cases

#### Compatible Dimmers\*:

Wall Box	Central System
Leviton CD250 Controller	Dynalite
	Fifth Light

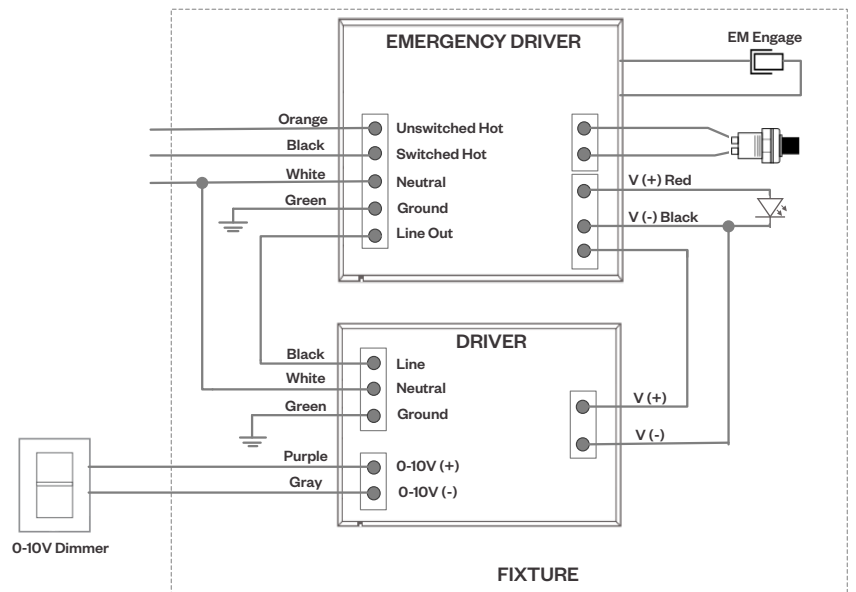
#### DALI Wiring Diagram



## Emergency Fixture with Built-In Battery Pack

Emergency fixture with built-in battery pack (**EMB**) wiring:

Note: EMB not available on lengths under 4'.



#### Notes:

\* Driver is 277VAC dimmable with appropriate dimmer (*by others*). All provided wiring diagrams show 120VAC wiring colors and method. Please refer to 277VAC dimmer installation instructions for 277VAC wiring diagrams.

\* The absence of a dimmer from the lists above does not imply incompatibility. Please consult factory for compatibility inquiries.