

Solace

3" Shallow Round Lens Wall Wash

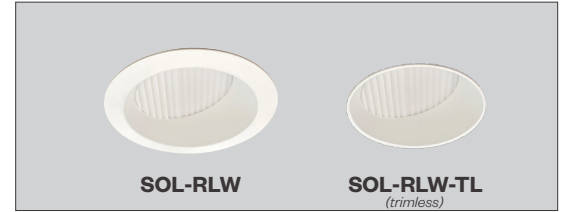


PROJECT:

TYPE:

Features

Solace 3" Downlights are the complete downlight family for any ceiling surface and low plenum ceiling. Round or Square apertures, available as downlight, adjustable or wallwash. Optional Solite lensing provides whisper quiet aesthetics. The trim options available as trimmed, trimless or millwork. The pinhole and shower pinhole trim makes this a complete a downlight to design the entire space with the same look.



Product Overview

Type: Shallow Round Lens Wall Wash
 Wattage: 8W, 12W, 17W
 Color Temp: 2700K, 3000K, 3500K, 4000K
 CRI: 83 typ. or 90+ typ.
 CrispWhite & 3K Class A available
 Dimming: TRIAC & ELV, 5% Dim, 120/277VAC
 0-10V, 1% Dim, 120/277VAC
 Lutron Hi-lume® EcoSystem Premier, 0.1% dim with soft on & fade to black, 120/277VAC (*Consult factory for Lutron lead time*)

Certifications



Fixture Summary

Fixture Type

Round/Square	New Construction	Trim	Trimless	Millwork
Yes	Yes	Yes	Yes	Yes

See separate spec sheet for Square trims.

Performance Data (see page 5 for full breakdown)

Watts	Delivered Lumens	LPW	CBCP	Color Temp-CRI
8	565	67	319	3000K-83
12	831	67	470	3000K-83
17	1066	63	602	3000K-83

Data is based on 3000K-83 120V IES files available on website.

Electrical Data

Voltage	8W		12W		17W	
	System Watts	Amps	System Watts	Amps	System Watts	Amps
120V	8	0.067	12	0.10	17	0.142
277V	8	0.029	12	0.043	17	0.061

Electronic constant current LED driver.

Solace

3" Shallow Round Lens Wall Wash



PROJECT:

TYPE:

Ordering Information - Housing/Frame

120/277						
1	2	3	4	5	6	7
1 Model	2 Style			3 Wattage		
SOL-RLW-NC (New Construction & Insulated Ceiling (IC rated))	T trimmed (2" max ceiling thickness)			8 (565 lm)		
SOL-RLW-CP (Chicago Plenum (CCEA) housing)	TL trimless (5/8" max ceiling thickness)			12 (831 lm)		
SOL-RLW-IC (Insulated Ceiling (IC)/air tight)	MWK millwork (for 1/2" - 11/16" ceiling thickness)			17 (1066 lm)		
	MWK1 millwork (for 3/4" - 1-1/2" ceiling thickness)			(Lumen data based on 3000K-83. See pg 5 for other performance data)		
	MWK2 millwork (for 1-1/2" - 2" ceiling thickness)					
4 Voltage	5 Color Temp					
120/277 (universal voltage)	83 CRI		90+ CRI ^{T24}			
	27 2700K-83	279 2700K-90+	CRISP* CrispWhite			
	30 3000K-83	309 3000K-90+	3CLA* 3000K Class A			
	35 3500K-83	359 3500K-90+				
	40* 4000K-83	409* 4000K-90+				
	* Consult factory for lead time.					
7 Driver (for non-dimming, select LE/TE option)	8 Options/Accessories					
LE/TE ^{T24} TRIAC/ELV dimming	HB49 - hanger bars from min 29" to max 49"			(26" hanger bars included as default options)		
O-10V ^{T24} 0-10V dimming, 1% dim				Note: 26" hanger bars are included as standard.		
HILUME-P-ECO - Lutron Hi-lume® EcoSystem Premier 0.1% dim with soft on & fade to black (Consult factory for Lutron lead time)				Choose HB49 option above for larger mounting spaces only.		

Ordering Information - Trim

SOL-RLW		
1	2	3
1 Model	2 Style	3 Finish
SOL-RLW (wall wash)	T trimmed	<u>Trimmed</u>
	TL trimless (not available for use with shower trim)	<u>Trimless/Millwork</u>
	MWK millwork (not available for use with shower trim)	MBW matte black, white flange
		MWW matte white, white flange
		SLVW matte silver, white flange
		MBB matte black, black flange
		SLVS matte silver, silver flange
		MB matte black
		MW matte white
		SLV matte silver

Solace

3" Shallow Round Lens Wall Wash



PROJECT:

TYPE:

Specifications

Application

Retail and commercial wall wash lighting

Housing Construction

20 ga. steel painted matte black
Extruded aluminum heatsink
Formed aperture plate with 5/8" lip (GB-standard)
Cast aluminum plaster frame with perforated face (for trimless option)
Integral adjustable locking mounting bars
Inherently protected

Reflector Trim Construction

Die-cast reflector
Injection molded optic lens

LED

Color Temp Options: 2700K, 3000K, 3500K, 4000K
CRI: 83 typ. or 90+ typ.
CrispWhite* & Class A** 3000K (high gamut) available
R9 Values: 11 (83 CRI), 55 (92 CRI)
Binning: 3 MacAdam (SDCM)
Life: 50,000+ hrs, > 70% of initial lumens at 50,000 hrs
** CrispWhite: CrispWhite Technology delivers the warmth of colors expected from a high 90 CRI solution but also creates the natural crisp white color that is pleasing to the eye. It creates the most impactful lighting ever available, by revealing the richest whites and vibrant colors that pop.*
*** Class A LED: Class A LED's have a CRI > 80 and a GAI > 80. CRI defines color "Naturalness" and GAI defines color "Saturation." Both being high delivers rich colors and pure whites.*

Electrical

Wattage: 8W, 12W, 17W
Electronic constant current LED driver, 120/277VAC input
This product complies with IEEE C62.41 for surge endurance up to 2.5KV. Amerlux® recommends using additional surge protection with this unit (supplied by others), surge and over voltage damage is not covered under warranty.
Emergency option available through circuiting/inverter only

Drivers

LE/TE - Leading Edge (Triac, Forward Phase) or Trailing Edge (ELV, Reverse Phase)
0-10V and Lutron systems also available
See pages 7-8 for more dimming information

Finish (Trim)

Powder coat paint

Mounting

26" Hanger bars included. Side brackets allow for rigid conduit pipe mounting along with additional 1/2" adjustment of housing vertical position
Optional **HB49** - hanger bars from min 29" to max 49" available
Trimmed Fixture:
For use in grid or sheetrock ceilings, 5/8" - 2" standard
Trimless Fixture (not available with Shower trim):
For use in sheetrock ceilings, max ceiling thickness 5/8"
For sheetrock ceilings beyond 5/8" consult factory
Millwork Fixture:
Millwork extension collars are based on ceiling material specifications and thickness. Provides flush trim appearance level with ceiling material. Max thickness 2"

Certifications

CSA damp as tested to UL 1598 standards
IC/AT rated

Warranty

5 year limited warranty

Weight

Housing and trim - 5 lbs.

Solace

3" Shallow Round Lens Wall Wash

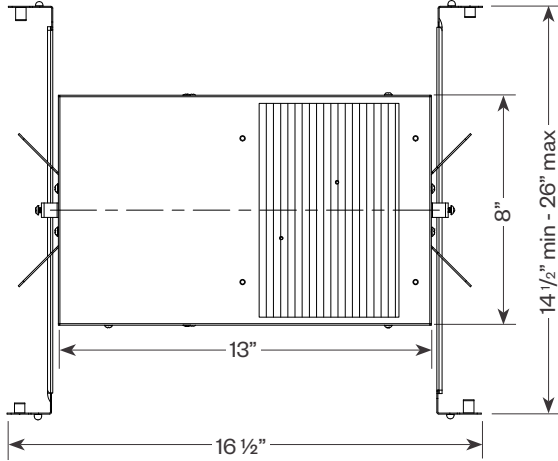


PROJECT:

TYPE:

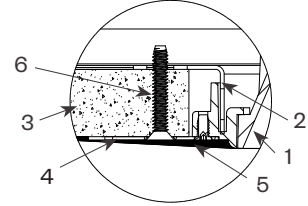
Product Details

Solace Round Downlights



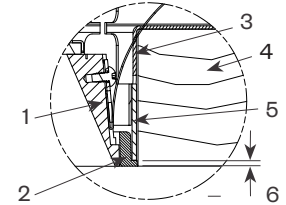
Plaster Frame Installation Detail (for trimless fixture only)

1. Reflector Trim
2. Aperture Plate
3. Ceiling 5/8"
4. Cast Aluminum Plaster Frame
5. Plaster Skin Coat (by others)
6. 6-32 Type F Thread Cutting Screw



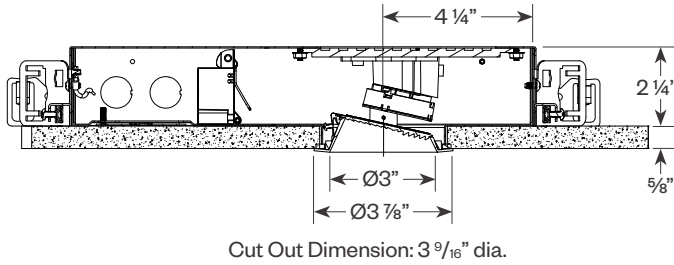
Millwork Detail

1. Reflector Trim
2. Millwork Ring
3. Aperture Plate
4. Wood Ceiling 2" Max
5. Extension collar (see ordering information for ceiling thicknesses)
6. 1/16" required for trim to be flush with ceiling

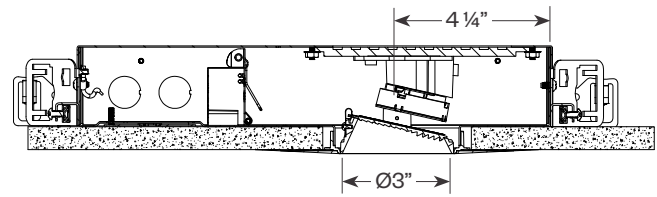


Round Downlight

Trimmed



Trimless & Millwork



Trimless Cut Out Dimension: 4 1/16" dia.
 Millwork Cut Out Dimension: 3 9/16" dia.

Solace

3" Shallow Round Lens Wall Wash



PROJECT:	TYPE:
-----------------	--------------

Solace Round Lens Wall Wash Performance Breakdown

Wattage	Color Temp.	Wall Wash	
		Lumens	LPW
8W	27	554	66
	30	565	67
	35	576	69
	40	593	71
	279	475	56
	309	492	59
	359	508	61
	409	508	61
	CRISP	367	44
	3CLA	395	47
12W	27	815	65
	30	831	67
	35	848	68
	40	873	70
	279	698	56
	309	723	58
	359	748	60
	409	748	60
	CRISP	540	43
	3CLA	582	47
17W	27	1045	62
	30	1066	63
	35	1087	64
	40	1119	66
	279	895	53
	309	927	55
	359	959	57
	409	959	57
	CRISP	693	41
	3CLA	746	44

Solace

3" Shallow Round Lens Wall Wash



PROJECT:

TYPE:

Performance Data

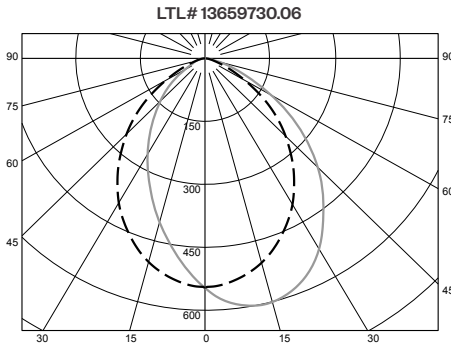
Multiplying Factors: (Multiplying Factor is based on 3000K-83 120V IES file on website)

Wattage:	8W	12W	17W
Factor:	0.53	0.78	1.0

Lens:	Solite
Factor:	0.95

CCT:	2700K-83	3000K-83	3500K-83	4000K-83	2700K-90+	3000K-90+	3500K-90+	4000K-90+	CRISP	3CLA
Factor:	0.98	1.0	1.02	1.04	0.84	0.87	0.90	0.91	0.65	0.70

17W LED, 3000K-83



ZONAL LUMEN SUMMARY

Zone	Lumens	%Fixt
0-40	616	57.8
0-60	961	90.1
0-90	1067	100.1
90-180	0	0.00

Luminaire Efficacy: 62.8 lm/W

Application Data (footcandles on wall)

1.5 Feet from Wall

		← 1.5' →				← 1.5' →				← 1.5' →				← 1.5' →															
Distance from ceiling	0.5'	35	41	42	42	42	40	35	35	41	42	42	42	40	35	35	41	42	42	42	40	35	35	41	42	42	42	40	35
	1.5'	72	88	92	93	92	88	72	72	88	92	93	92	88	72	72	88	92	93	92	88	72	72	88	92	93	92	88	72
	2.5'	57	70	76	77	76	70	57	57	70	76	77	76	70	57	57	70	76	77	76	70	57	57	70	76	77	76	70	57
	3.5'	36	43	48	49	48	43	36	36	43	48	49	48	43	36	36	43	48	49	48	43	36	36	43	48	49	48	43	36
	4.5'	23	27	30	31	30	27	23	23	27	30	31	30	27	23	23	27	30	31	30	27	23	23	27	30	31	30	27	23
	5.5'	16	18	20	21	20	18	16	16	18	20	21	20	18	16	16	18	20	21	20	18	16	16	18	20	21	20	18	16
	6.5'	12	13	14	15	14	13	12	12	13	14	15	14	13	12	12	13	14	15	14	13	12	12	13	14	15	14	13	12
	7.5'	9	10	11	11	11	10	9	9	10	11	11	11	10	9	9	10	11	11	11	10	9	9	10	11	11	11	10	9

Footcandles are average and rounded off.
Data for multiple units are based on a minimum of five units.

1.5 Feet from Wall

		← 2' →				← 2' →				← 2' →				← 2' →				
Distance from ceiling	0.5'	30	30	33	31	34	30	33	30	30	30	33	31	34	30	33	30	30
	1.5'	61	67	71	70	72	69	71	61	61	67	71	70	72	69	71	67	61
	2.5'	47	55	59	60	61	60	59	47	47	55	59	60	61	60	59	55	47
	3.5'	29	35	38	39	40	40	38	29	29	35	38	39	40	40	38	35	29
	4.5'	19	22	24	26	26	25	23	19	19	22	24	26	26	25	23	22	19
	5.5'	13	15	17	18	18	17	16	13	13	15	17	18	18	17	16	15	13
	6.5'	10	11	12	13	13	13	12	10	10	11	12	13	13	13	12	11	10
	7.5'	8	9	10	10	10	10	9	8	8	9	10	10	10	10	9	9	8

2 Feet from Wall

		← 2' →				← 2' →				← 2' →				← 2' →				
Distance from ceiling	0.5'	14	15	17	16	17	17	16	14	14	15	17	16	17	17	16	15	14
	1.5'	40	45	48	48	49	48	48	40	40	45	48	48	49	48	48	45	40
	2.5'	41	50	53	55	55	55	53	41	41	50	53	55	55	55	53	50	41
	3.5'	31	37	40	42	42	42	40	31	31	37	40	42	42	42	40	37	31
	4.5'	22	26	28	30	30	30	28	22	22	26	28	30	30	30	28	26	22
	5.5'	16	18	20	21	21	21	20	16	16	18	20	21	21	21	20	19	16
	6.5'	12	14	15	16	16	16	15	12	12	14	15	16	16	16	15	14	12
	7.5'	10	11	11	12	12	12	12	10	10	11	11	12	12	12	12	11	10

PROJECT:

TYPE:

Dimming Compatibility

Amerlux® Solace fixtures are compatible with all major dimming protocols prevalent in the United States. Please see below for general compatibilities and wiring diagrams. Amerlux recommends testing your unique dimming configuration as the exact full configuration (Dimmer, Fixture Quantity, Voltage, etc) may affect dimming performance.

--- NOTE: INFORMATION BELOW IS FOR WIRED DIMMERS ONLY. FOR WIRELESS DIMMERS, CONSULT FACTORY ---

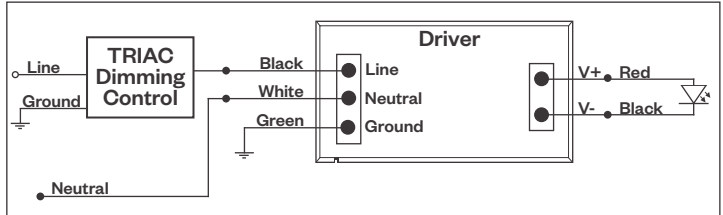
TRIAC (Forward Phase) DIMMING (Standard)

Utilizes standard TRIAC dimmers that are in wide use in installations across the US. Best for retrofit applications where TRIAC dimmers are installed.

Notes:

- 120VAC or 277VAC*
- Dims down to 5% light output (most cases)
- Consult Dimming manufacturer for installation instructions - **DO NOT SHARE NEUTRALS!**
- Must meet dimmer Minimum Load Requirements per dimming manufacturer

TRIAC Wiring Diagram



Compatible Dimmers†:	
Wall Box (TRIAC 120VAC)	Central System
Lutron "Diva"	Lutron "GP" Panel
Lutron "Nova-T"	Lutron Grafik Eye QS
Lutron "Maestro"	
Lutron "Skylark"	

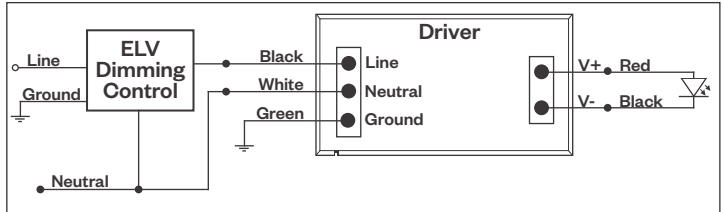
ELV - Electronic Low Voltage (Reverse Phase) DIMMING (Standard)

Utilizes specialized "ELV" dimmers.

Notes:

- 120VAC or 277VAC*
- Dims down to 5% light output (most cases)
- Consult Dimming manufacturer for installation instructions - **DO NOT SHARE NEUTRALS!**
- Must meet dimmer Minimum Load Requirements per dimming manufacturer

ELV Wiring Diagram



Compatible Dimmers†:		
Wall Box (ELV 120VAC)	Wall Box (ELV 277VAC)	Central System
Lutron "Diva"	Leviton Revoir II AWSMT-E	Lutron "GP" Panel with PHPM-PA 120/277VAC
Lutron "Nova-T"		Lutron Grafik Eye QS with PHPM-PA 120/277VAC
Lutron "Maestro"		
Lutron "Skylark"		
Leviton "Surslide"		
Leviton "Vizio"		

Notes:
 * Driver is 277VAC dimmable with appropriate dimmer (by others). All provided wiring diagrams show 120VAC wiring colors and method. Please refer to 277VAC dimmer installation instructions for 277VAC wiring diagrams.
 † The absence of a dimmer from the lists above does not imply incompatibility. Please consult factory for compatibility inquiries.

PROJECT:

TYPE:

Dimming Compatibility *(continued)*

Amerlux® Solace fixtures are compatible with all major dimming protocols prevalent in the United States. Please see below for general compatibilities and wiring diagrams. Amerlux recommends testing your unique dimming configuration as the exact full configuration (Dimmer, Fixture Quantity, Voltage, etc) may affect dimming performance.

--- NOTE: INFORMATION BELOW IS FOR WIRED DIMMERS ONLY. FOR WIRELESS DIMMERS, CONSULT FACTORY ---

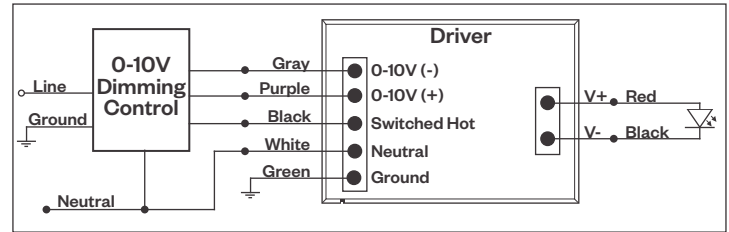
0-10V DIMMING

Integrates into a variety of building management and daylighting controls

Notes:

- 120VAC or 277VAC*
- Dims down to 1% light output
- Requires interface to turn off power to driver
- Consult Dimming manufacturer for installation instructions - **DO NOT SHARE NEUTRALS!**

0-10V Wiring Diagram



Compatible Dimmers*:

Wall Box		Central System
Lutron "Diva" - DVSTV	Leviton Renoir II 0-10V	Lutron Grafik Eye with GRX-TVI Interface

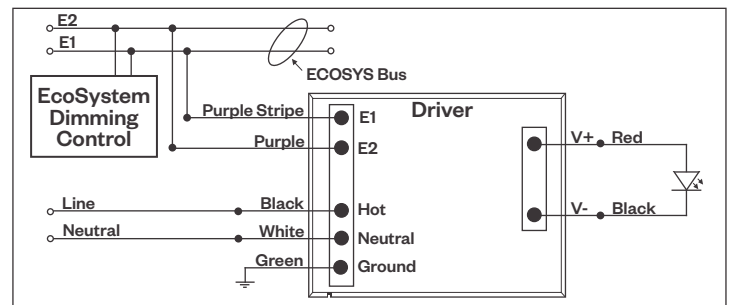
LUTRON LDE1 DIMMING

Integrates into Lutron EcoSystem building management

Notes:

- 120VAC or 277VAC*
- Dims down to 1% light output
- EcoSystem Control
- Consult Dimming manufacturer for installation instructions - **DO NOT SHARE NEUTRALS!**

LDE1 (HILUME-H-ECO) EcoSystem Digital Control Wiring Diagram



Compatible Dimmers*:

Lutron ECO System	Central System
Pow Pak Dimming Modules	Lutron EcoSystem compatible controls
Energj Savr Node	
Grafik Eye QS/Homeworks	
QS Control Unit	
Quantum Hub	
Homeworks QS/My Room	

Notes:

* Driver is 277VAC dimmable with appropriate dimmer (by others). All provided wiring diagrams show 120VAC wiring colors and method. Please refer to 277VAC dimmer installation instructions for 277VAC wiring diagrams.

† The absence of a dimmer from the lists above does not imply incompatibility. Please consult factory for compatibility inquiries.