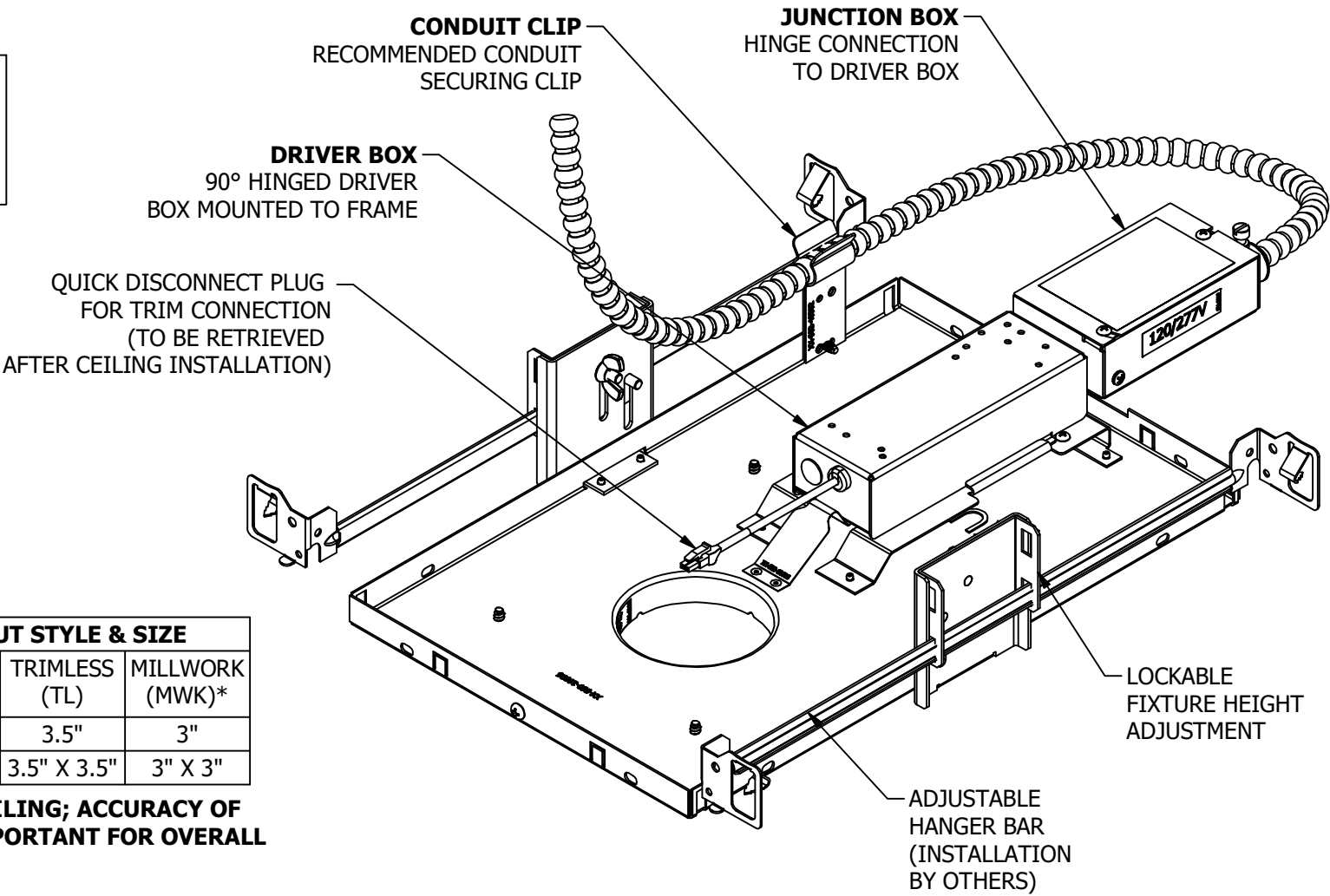


WARNING - RISK OF FIRE AND ELECTRICAL SHOCK. FIXTURE MUST BE INSTALLED BY A QUALIFIED ELECTRICIAN ONLY. FIXTURE IS INTENDED FOR INSTALLATION IN ACCORDANCE WITH THE NATIONAL ELECTRICAL CODE, LOCAL AND FEDERAL SPECIFICATIONS. DISCONNECT POWER AT ELECTRICAL PANEL BEFORE SERVICING. RETAIN THESE INSTRUCTIONS FOR MAINTENANCE REFERENCE.

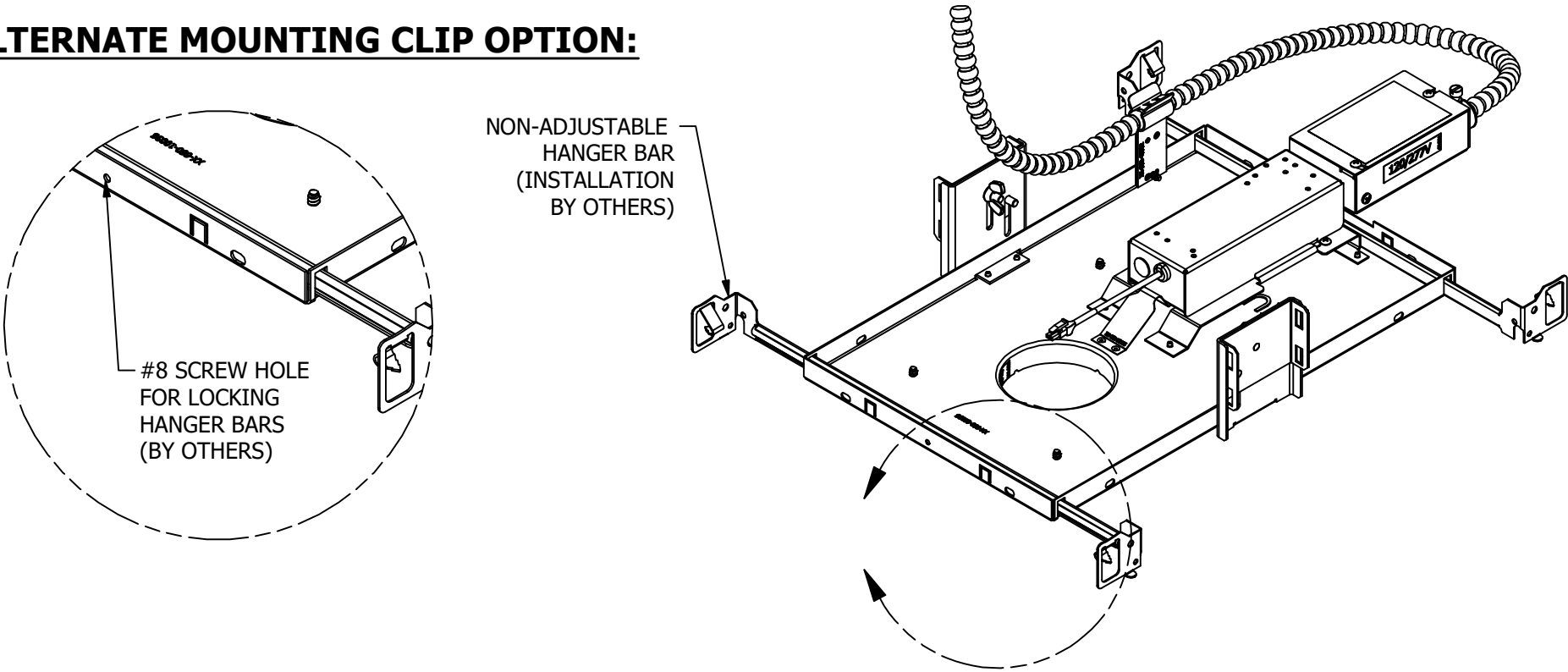
NOTE:
CONDUIT MUST HAVE AT LEAST 12" FLEX TO ALLOW DRIVER/JUNCTION BOX TO EXIT CEILING.



CEILING CUT-OUT STYLE & SIZE			
FIXTURE STYLE	TRIMMED (T)	TRIMLESS (TL)	MILLWORK (MWK)*
ROUND	3"	3.5"	3"
SQUARE	3" X 3"	3.5" X 3.5"	3" X 3"

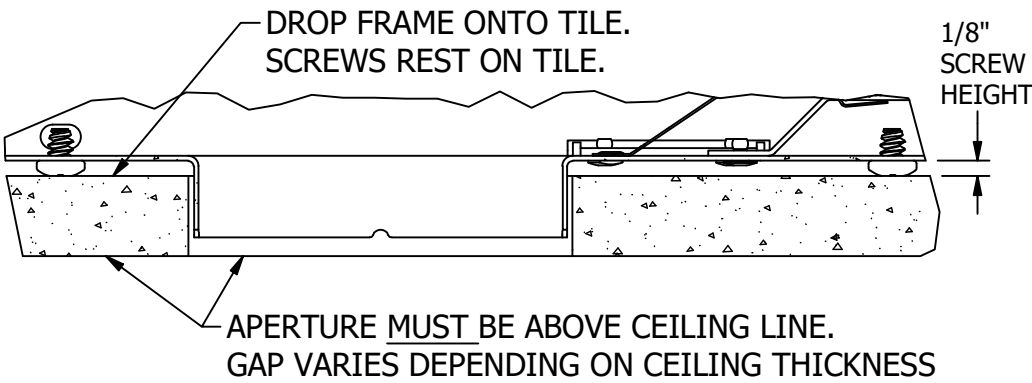
* FOR MILLWORK CEILING; ACCURACY OF CUT OUT IS VERY IMPORTANT FOR OVERALL AESTHETIC.

ALTERNATE MOUNTING CLIP OPTION:

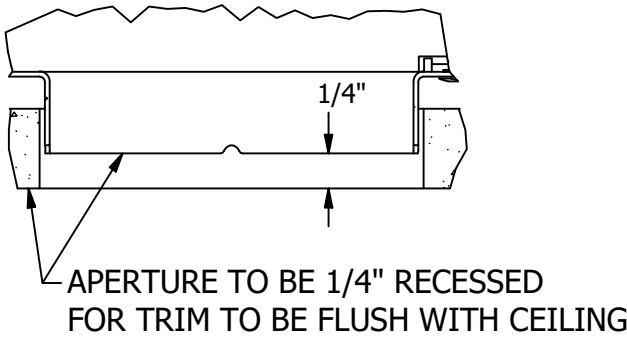


ATTENTION: CHECK ALL ELECTRICAL CONNECTIONS PRIOR TO INSTALLING CEILING.

DETAIL: CEILING ALIGNMENT
FOR TRIMMED & TRIMLESS



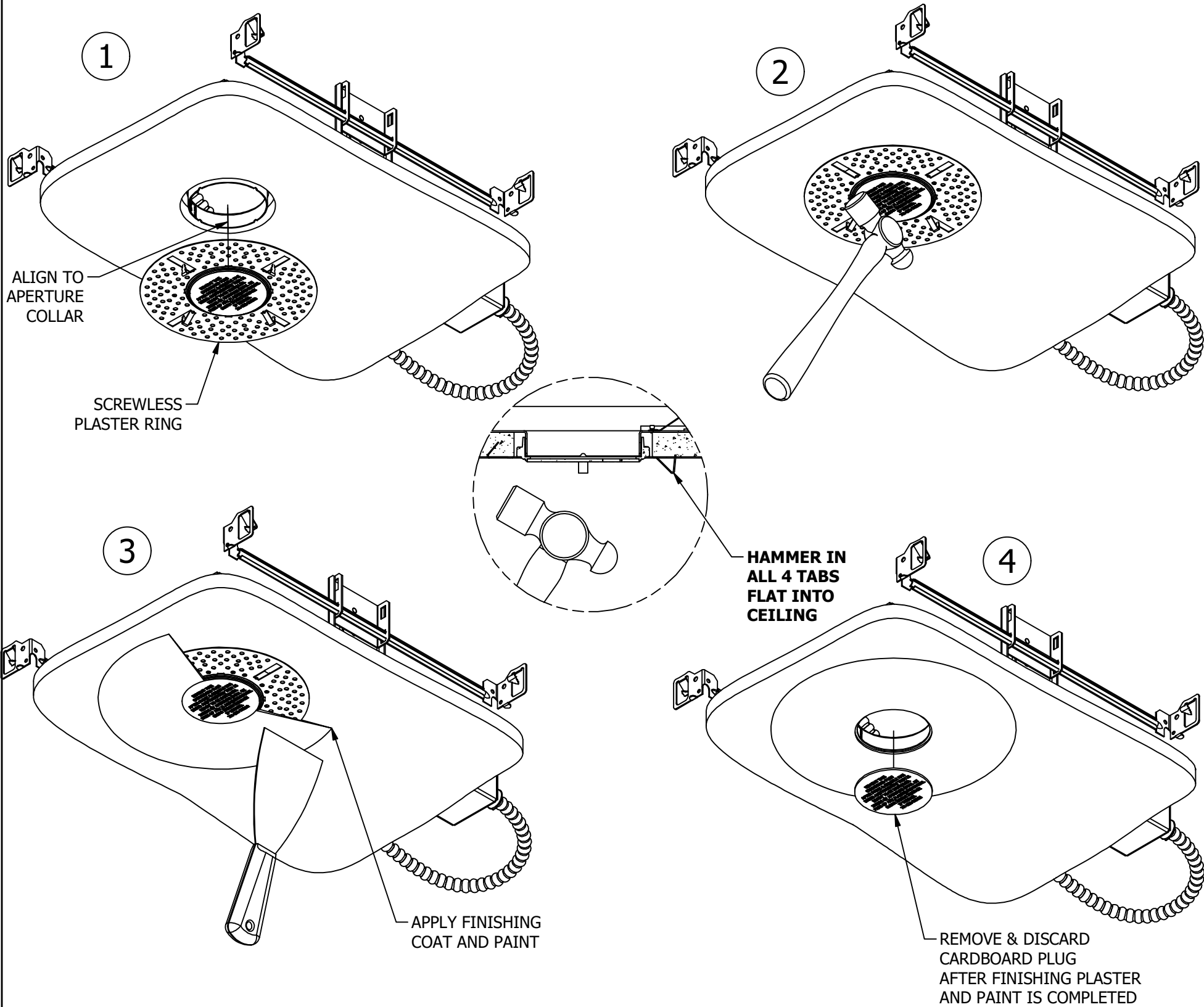
DETAIL: CEILING ALIGNMENT
FOR MILLWORK



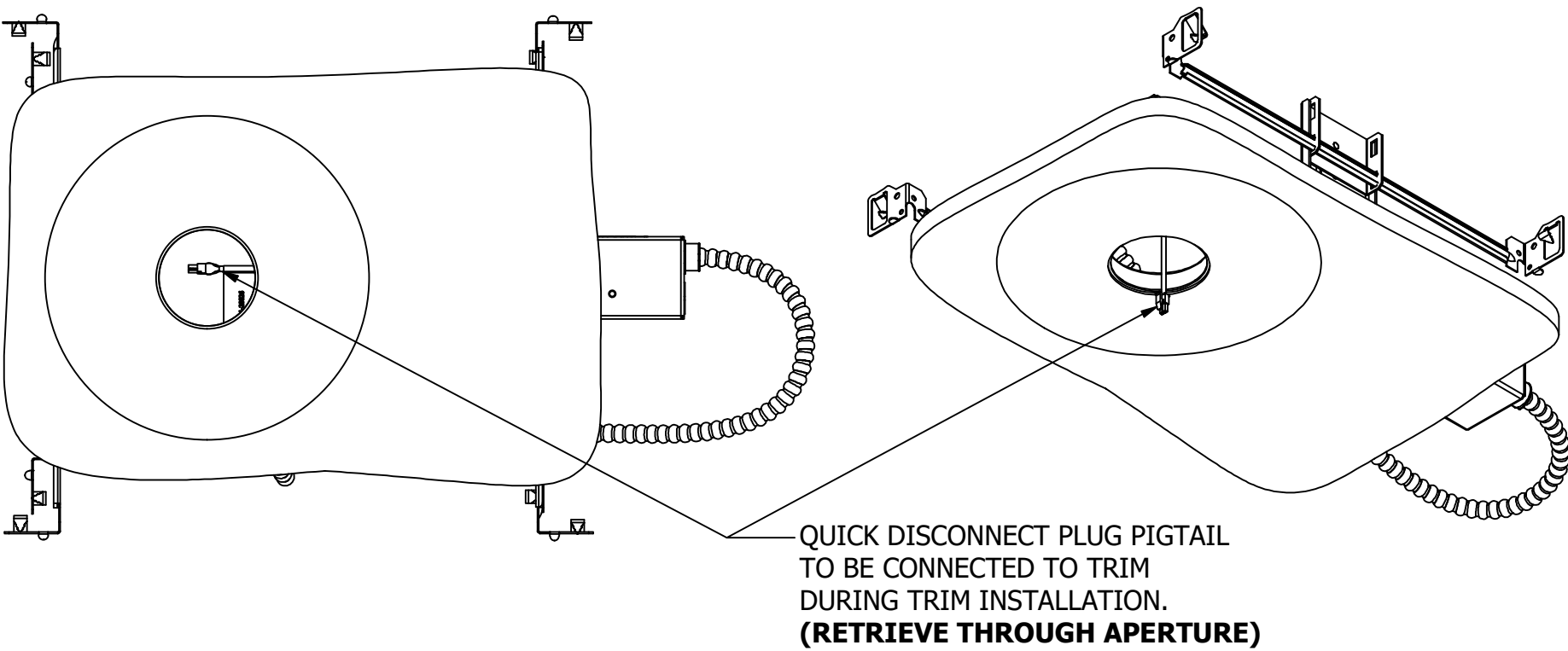
NOTE: FRAME TO INSTALLED PRIOR TO CEILING INSTALLATION

WARNING - RISK OF FIRE AND ELECTRICAL SHOCK. FIXTURE MUST BE INSTALLED BY A QUALIFIED ELECTRICIAN ONLY. FIXTURE IS INTENDED FOR INSTALLATION IN ACCORDANCE WITH THE NATIONAL ELECTRICAL CODE, LOCAL AND FEDERAL SPECIFICATIONS. DISCONNECT POWER AT ELECTRICAL PANEL BEFORE SERVICING. RETAIN THESE INSTRUCTIONS FOR MAINTENANCE REFERENCE.

SCREWLESS PLASTER RING INSTALLATION FOR TRIMLESS HOUSINGS ONLY



CONNECT TRIM TO FRAME:



WARNING - RISK OF FIRE AND ELECTRICAL SHOCK. FIXTURE MUST BE INSTALLED BY A QUALIFIED ELECTRICIAN ONLY. FIXTURE IS INTENDED FOR INSTALLATION IN ACCORDANCE WITH THE NATIONAL ELECTRICAL CODE, LOCAL AND FEDERAL SPECIFICATIONS. DISCONNECT POWER AT ELECTRICAL PANEL BEFORE SERVICING. RETAIN THESE INSTRUCTIONS FOR MAINTENANCE REFERENCE.

DRIVER REMOVAL:

- 1. PRESS DOWN ON SPRING TO RELEASE DRIVER MODULE.
- 2. PULL FORWARD ON DRIVER CORD. MODULE WILL SLIDE OFF ITS TRACK.
- 3. PULL DRIVER MODULE THROUGH OPENING. MODULE BENDS 90°.

