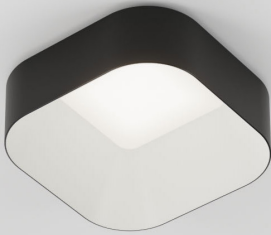




Stadia 5" Downlight



Stadia 5"



### Features

Stadia is a collection of architectural decorative downlights that offers designers a new way to add visual interest in a space while providing soft, uniform ambient lighting. Stadia downlights have a soft square trim extending 2" below the ceiling that is offered in a variety of standard and premium finishes including neutrals, hues, metallic and wood grain finishes. The trim is offered in 2 sizes: 5" and 8" and is offered both with a single-tone finish, where the outer trim and inner bevel have the same finish, or a two-tone finish, where the outer trim and inner bevel have different finishes.

### Product Overview

- Fixture Type: Architectural Decorative Downlight
- Wattage: 4, 6, 9, 17, 22
- Color Temp: 2700K, 3000K, 3500K, 4000K
- CRI: 80+ typ (4000K)  
90+ typ. (2700K, 3000K, 3500K)
- Dimming: 0-10V 1% Dim (120/277VAC)  
TRIAC & ELV 5% Dim (120/277VAC)  
DALI 1% Dim (120/277VAC)  
Lutron LDE1 Hi-lume® 1% Dim Soft-On/Fade-to-Black (120/277VAC)

PROJECT:

TYPE:

### Product Overview

Watts	Delivered Lumens	LPW	Color Temp, CRI
4	325	81.3	3500K, 90+
6	500	83.3	3500K, 90+
9	700	77.8	3500K, 90+
17	1250	73.5	3500K, 90+
22	1545	70.5	3500K, 90+

Stadia allows designers to mix different sizes and finishes to add visual interest to the ceiling. When used in a cluster, the below table shows visually similar lumen packages for the 5" and 8":

5"	8"
325 lm	850 lm
700 lm	1700 lm
1250 lm	3102 lm

See separate spec sheet for Stadia 8"

### Electrical Data

	4W		6W		9W	
	System Watts	Amps	System Watts	Amps	System Watts	Amps
120V	4.2	0.036	6.3	0.053	8.8	0.074
277V	5.5	0.033	6.7	0.034	9	0.04
	17W		22W			
	System Watts	Amps	System Watts	Amps		
120V	16.6	0.13	21.92	0.18		
277V	16.8	0.064	21.3	0.07		

Electronic constant current LED driver



**PROJECT:**

**TYPE:**

**Housing/Frame Ordering Information**

1	2	3	4	5	6
<b>1 Model</b>	<b>2 Style</b>			<b>3 Wattage</b>	
STADIA-55-NC New Construction Housing for 5" Stadia	SST soft square trim (semi-recessed)			4 6 9 17 22	
<b>4 Voltage</b>	<b>5 Driver</b>		<b>6 Options</b>		
120 277	O-10V O-10V dimming, 1% dim LE/TE TRIAC/ELV dimming DALI DALI dimming, 1% dim HILUME-H-ECO Lutron LDE1 Hi-lume® 1% Soft-On/Fade-to-Black		EM emergency battery pack with remote test switch HB49 hanger bars from min 29" to max 49"		

**Trim Ordering Information**

1	2	3	4	5	6	7
<b>1 Model</b>	<b>2 Style</b>		<b>3 Finish Type</b>			
STADIA-55 5"x5" Stadia	SST soft square trim (semi-recessed)		1T single tone 2T two tone			
<b>4 Body Finish</b>	<b>5 Bevel Finish</b>		<b>6 Beam Spread</b>		<b>7 CCT-CRI</b>	
<b>Classic:</b> MW matte white MB matte black SLV matte silver <b>Glossy Hue:</b> PGR pearl opal green (RAL 6036) PBL pearl gentian blue (RAL 5025) PRD pearl ruby red (RAL 3032) <b>Metallic:</b> MGD metallic gold <b>Wood Grain:</b> WAS wood grain ash WCH wood grain chestnut WWA wood grain walnut WEB wood grain ebony	<b>Classic:</b> MW matte white MB matte black SLV matte silver <b>Glossy Hue:</b> PGR pearl opal green (RAL 6036) PBL pearl gentian blue (RAL 5025) PRD pearl ruby red (RAL 3032) <b>Metallic:</b> MGD metallic gold		VWF very wide flood, 95°		279 2700K-90+ 309 3000K-90+ 359 3500K-90+ 40 4000K-80+ 409* 4000K-90+ *Consult Factory	

**PROJECT:**

**TYPE:**

**Specifications**

**Housing Construction**

- Steel frame and housing
- Die-cast aluminum outer trim and bevel
- Internal components are die-formed cold-rolled steel

**Optical**

- Nominal 1/8" white acrylic lens for soft even illumination

**LED**

- Color Temp Options: 2700K, 3000K, 3500K, 4000K
- CRI: 80+ typ (4000K)  
90+ typ. (2700K, 3000K, 3500K)
- R9 Values: > 50 (90+ CRI)
- Binning: 3 MacAdam (SDCM)

**Electrical**

- Wattage: 4, 6, 9, 17, 22
- Electronic constant current LED driver
- This product complies with IEEE C62.41 for surge endurance up to 2.5KV. Amerlux® recommends using additional surge protection with this unit (supplied by others), surge and over voltage damage is not covered under warranty.***

**Drivers**

- 0-10V - 1% electronic dimming, multivolt (120-277VAC) constant current driver (standard). Cap leads for non-dim applications.
- LE/TE - Leading Edge, TRIAC, forward phase/Trailing Edge, ELV, reverse phase, dedicated voltage, (120V or 277V)
- DALI - DALI dimming, 1% dim (120-277VAC)
- See pages xx for more dimming information*

**Mounting**

- For use in grid or sheetrock ceilings, 5/8" thick
- Consult factory for thicker ceilings
- 26" Hanger bars included
- Consult factory for hanger bars greater than 26"

**Certifications**

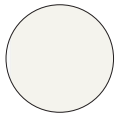
- CSA approved to UL standards as tested by CSA
- For indoor use only

**Warranty**

- 5 year limited warranty

**Finish Type**

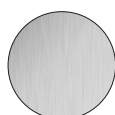
Classic



Matte White  
MW



Matte Black  
MB

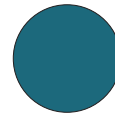


Matte Silver  
SLV

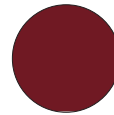
Glossy Hue



Pearl Opal Green  
PGR



Pearl Genetian Blue  
PBL



Pearl Ruby Red  
PBR

Metallic



Metallic Gold  
MGD

Wood Grain



Wood Grain Ash  
WAS



Wood Grain Chestnut  
WCH



Wood Grain Walnut  
WWA

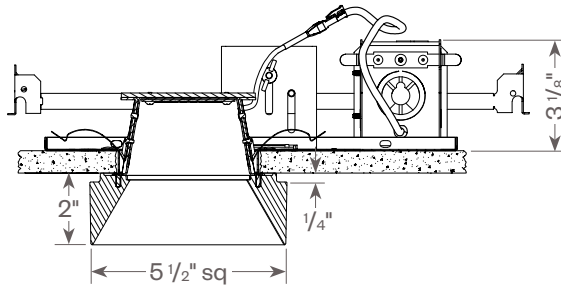
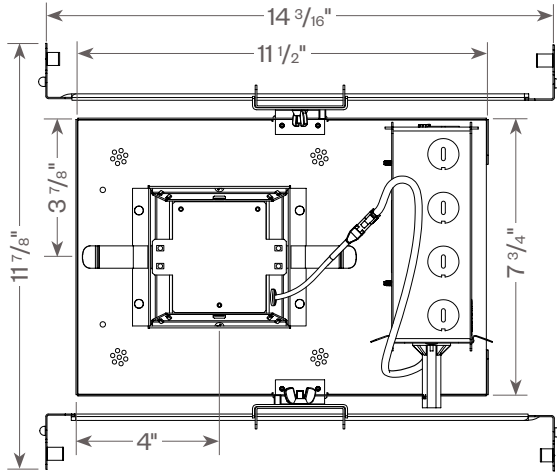


Wood Grain Ebony  
WEB

PROJECT:

TYPE:

Product Detail



Ceiling Cutout: 4" <sup>+0"</sup>/<sub>-1/16"</sub> SQ.

**PROJECT:**

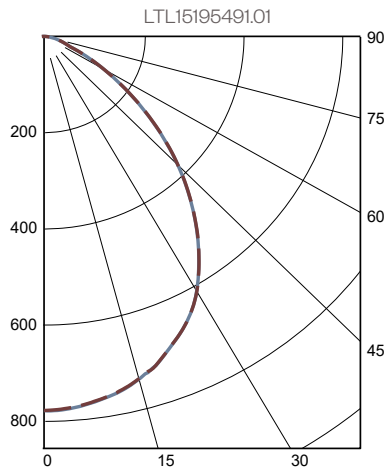
**TYPE:**

**Fixture Data:** (Complete photometric data (ies format) available upon request)

Wattage	4	6	9	17	22
Factor:	0.21	0.32	0.45	0.81	1.0

CCT	4000K-80+	2700K-90+	3000K-90+	3500K-90+	4000K-90+
Factor:	1.20	0.93	0.97	1.0	1.02

**22W 3500K-90+**



**Zonal Lumen Summary**

Zone	Lumens	% Luminaire
0-40	925	59.9%
0-60	1417	91.7%
0-90	1545	100.0%
90-180	0	0.0%

**Luminaire Efficacy: 70.5 lm/W**

**Coefficiency of Utilization**

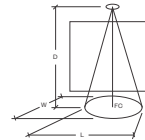
Effective Floor Cavity Reflectance 20%  
RC 80

RW	70	50	30	10
ROR				
0	119	119	119	119
1	111	107	104	101
2	103	96	90	86
3	95	86	79	74
4	88	78	70	64
5	82	70	62	57
6	76	64	56	50
7	71	59	51	45
8	66	54	46	37
9	62	50	42	37
10	58	46	39	34

Note: Values are expressed as percent of total lumen output delivered to task surface.

**Application Data**

	0° Aiming Angle Horizontal Footcandles			
	D	FC	L	W
Very Wide Flood	5.0'	34	5.7	5.7
	7.5'	15	8.6	8.6
	10.0'	8	12.4	12.4
	12.5'	5	16.9	16.9



**Notes and Definitions:**

Beam spread is to 50% center beam candlepower (CBCP).

**D**=Distance to floor or wall.

**FC**=Footcandles on floor or wall at center beam aiming location.

**L**=Effective Visual Beam length in feet (50% of maximum footcandle level).

**W**=Effective Visual Beam width in feet (50% of maximum footcandle level).

**CB**=Distance across or down to center beam location.

**PROJECT:**

**TYPE:**

**Dimming Compatibility**

Amerlux® Stadia fixtures are compatible with all major dimming protocols prevalent in the United States. Please see below for general compatibilities and wiring diagrams. Amerlux recommends testing your unique dimming configuration as the exact full configuration (Dimmer, Fixture Quantity, Voltage, etc) may affect dimming performance.

**--- NOTE: INFORMATION BELOW IS FOR WIRED DIMMERS ONLY. FOR WIRELESS DIMMERS, CONSULT FACTORY ---**

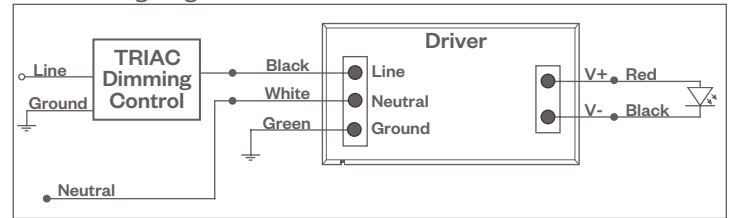
**TRIAC (Forward Phase) DIMMING (Standard)**

Utilizes "Standard" incandescent dimmers that are in wide use in installations across the US. Best for retrofit applications where TRIAC dimmers are installed.

**Notes:**

- 120VAC or 277VAC\*
- Dims down to less than 5% light output (most cases)
- Consult Dimming manufacturer for installation instructions - DO NOT SHARE NEUTRALS!
- Must meet dimmer Minimum Load Requirements per dimming manufacturer

**TRIAC Wiring Diagram**



**Compatible Dimmers\*:**

Wall Box (Incandescent Style, Wattage as required)	Central System
Lutron "Diva"	Lutron "GP" Panel
Lutron "Nova-T"	Lutron Grafik Eye QS
Lutron "Maestro"	
Lutron "Skylark"	

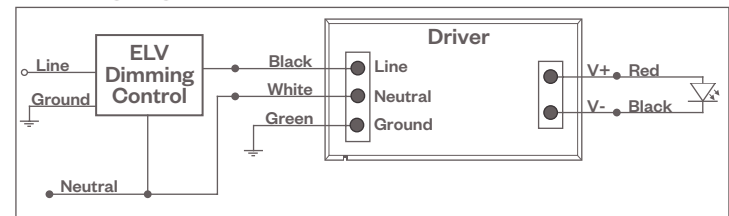
**ELV - Electronic Low Voltage (Reverse Phase) DIMMING (Standard)**

Utilizes specialized "ELV" dimmers.

**Notes:**

- 120VAC or 277VAC\*
- Dims down to less than 5% light output (most cases)
- Consult Dimming manufacturer for installation instructions - DO NOT SHARE NEUTRALS!
- Must meet dimmer Minimum Load Requirements per dimming manufacturer

**ELV Wiring Diagram**



**Compatible Dimmers\*:**

Wall Box (ELV Style)	Central System
Lutron "Diva"	Lutron "GP" Panel with PHPM-PA Interface
Lutron "Nova-T"	Lutron Grafik Eye QS with PHPM-PA Interface
Lutron "Maestro"	
Lutron "Skylark"	

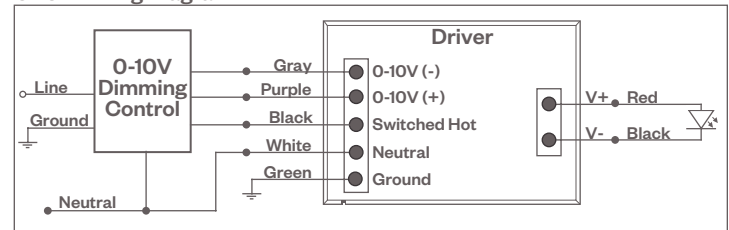
**0-10V Dimming**

Integrates into a variety of building management and daylighting controls.

**Notes:**

- 120VAC or 277VAC\*
- Dims down to 1% light output
- Consult Dimming manufacturer for installation instructions - DO NOT SHARE NEUTRALS!

**0-10V Wiring Diagram**



**Compatible Dimmers\*:**

Wall Box	Central System
Lutron "Diva" - DVSTV	Lutron Grafik Eye with GRX-TVI Interface

**Notes:**

\* Driver is 277VAC dimmable with appropriate dimmer (by others). All provided wiring diagrams show 120VAC wiring colors and method.

Please refer to 277VAC dimmer installation instructions for 277VAC wiring diagrams.

† The absence of a dimmer from the lists above does not imply incompatibility. Please consult factory for compatibility inquiries.

**PROJECT:**

**TYPE:**

**Dimming Compatibility**

Amerlux® Stadia fixtures are compatible with all major dimming protocols prevalent in the United States. Please see below for general compatibilities and wiring diagrams. Amerlux recommends testing your unique dimming configuration as the exact full configuration (Dimmer, Fixture Quantity, Voltage, etc) may affect dimming performance.

**--- NOTE: INFORMATION BELOW IS FOR WIRED DIMMERS ONLY. FOR WIRELESS DIMMERS, CONSULT FACTORY ---**

**Lutron LDE1 Dimming**

Integrates into Lutron EcoSystem building management controls.

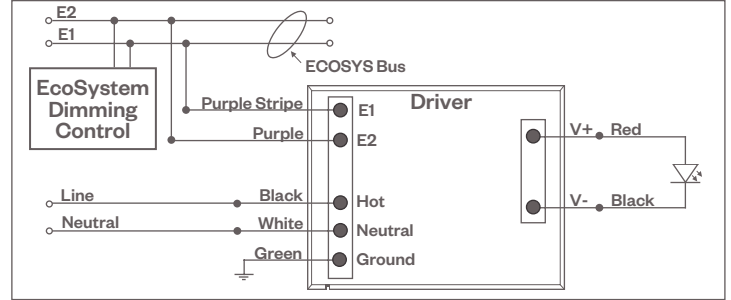
**Notes:**

- 120VAC or 277VAC\*
- Dims down to 1% Soft-On/Fade-to-Black
- Consult Dimming manufacturer for installation instructions - DO NOT SHARE NEUTRALS!

**Compatible Dimmers†:**

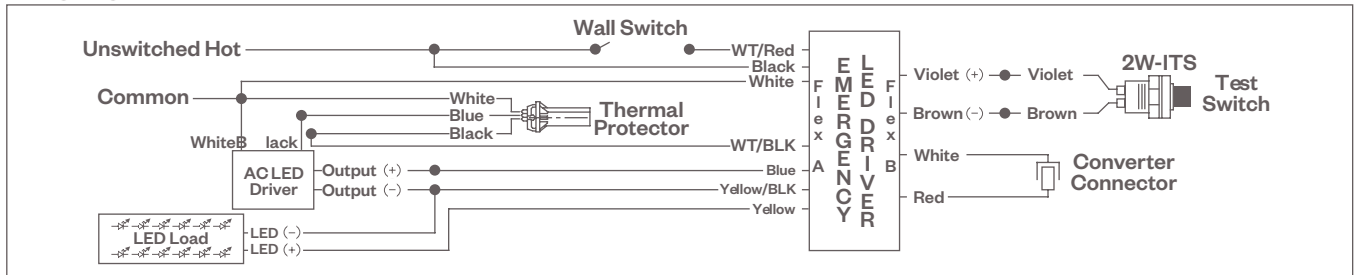
Lutron ECO System	Central System
Pow Pak Dimming Modules	Lutron "GP" Panel
Energi Savr Node	Lutron Grafik Eye QS
Grafik Eye QS/Homeworks	
QS Control Unit	
Quantum Hub	
Homeworks QS/My Room	

**Lutron LDE1 (HILUME-H-ECO) EcoSystem Digital Control Wiring Diagram**



**Emergency Dimming**

**Wiring Diagram**



**Notes:**

- \* Driver is 277VAC dimmable with appropriate dimmer (by others). All provided wiring diagrams show 120VAC wiring colors and method. Please refer to 277VAC dimmer installation instructions for 277VAC wiring diagrams.
- † The absence of a dimmer from the lists above does not imply incompatibility. Please consult factory for compatibility inquiries.