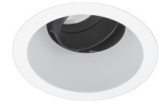


HORNET® HP DOWNLIGHT

3.5" ROUND ADJUSTABLE LED INTERNATIONAL

I-HDL-HP-
RA-A14
LED



APPLICATION:

Retail, commercial & hospitality accent/display lighting

CONSTRUCTION:

Die-cast aluminum trim ring
Die-cast optical head construction
Spring steel retaining clips
Painted finishes include matte white and optical matte black with matte white flange

ELECTRICAL:

Electronic constant current LED driver, 240v
ELV & Triac dimming standard

This product complies with IEEE C62.41 for surge endurance up to 2.5KV. Amerlux® recommends using additional surge protection with this unit (supplied by others), surge damage is not covered by warranty.

OPTICS:

Available in a variety of beam spreads
LED:

Color Temp Options: 2200K, 2700K, 3000K, 3500K, 4000K
CRI: 83 typ. (2700K, 3000K, 3500K, 4000K)
90+ typ. (2200K, 2700K, 3000K)

Optional Amerlux CrispWhite technology (16W max)

R9 Value: 11 (83CRI), 55 (90+CRI)

Binning: 3 MacAdam (SDMC)

Lumen Maintenance: >70% of initial lumens @ 50,000 hrs

Lumen Output (at 3000K):

16W:SP 1199 typ

18W:SP 1332 typ

NF 1114 typ

NF 1238 typ

FL 1074 typ

FL 1193 typ

WF 1024 typ

WF 1138 typ

0-30° tilt, 358° rotation

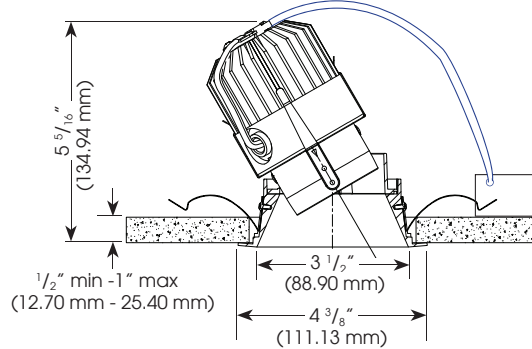
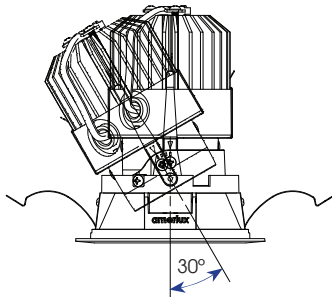
LABELING:



For indoor use only

PROJECT:

TYPE:



Ceiling Cut Out Dimension: 3 55/64" (98 mm)



ELECTRICAL

Electronic driver

	11W		16W		18W	
	System Watts	Amps	System Watts	Amps	System Watts	Amps
240v	11	0.05	16	0.07	18	0.08

ORDERING INFORMATION:

Model	Wattage	Lamp Type	Voltage	Aperture Finish	Beam Spread	Color Temp (CCT-CRI)	Listing Code	Options/Accessories
I-HDL-HP-RA-A14	11	LED	240	<u>Reflector with White Painted Flange</u>	SP - spot, 15°	27 - 2700K-83	CE	HEX - hexcell louver
	16			MBW - matte black	NF - narrow flood, 20°	30 - 3000K-83		SOL - solite beam softening lens
	18			MWW - matte white	MFL - medium flood, 24°	35 - 3500K-83		DALI - DALI driver
				SLVW - matte silver	WF - wide flood, 45°	40 - 4000K-83		
				<u>Reflector with Black Painted Flange</u>	VWF - very wide flood, 60°	229 - 2200K-90+		
				MBB - matte black	LS - linear spread, 60° x 10°	279 - 2700K-90+		
				<u>Reflector with Silver Painted Flange</u>		309 - 3000K-90+		
				SLVS - matte silver		CRISP - CrispWhite (16W max)		
						3CLA - 3K Class A		

Example: I-HDL-HP-RA-A14-18-LED-240-MBW-FL-30-CE

Cat #:

Amerlux reserves the right to change details that do not affect overall function and performance.



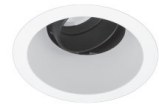
HORNET® HP DOWNLIGHT

3.5" ROUND ADJUSTABLE LED INTERNATIONAL

I-HDL-HP-
RA-A14
LED



TYPE:



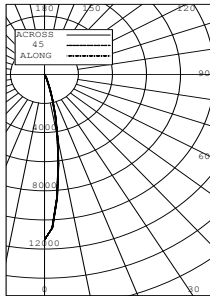
FIXTURE DATA: For 11W data, multiply by 0.62; For 16W data, multiply by 0.88

Complete photometric data (ies format) available upon request.

CCT Conversion Factor: 2700K-83 = 0.96; 3500K-83 = 1.02; 4000K-83 = 1.04; 2200K-90+ = 0.71; 2700-90+ = 0.80; 3000K-90+ = 0.83; CRISP = 0.65; 3CLA = 0.75

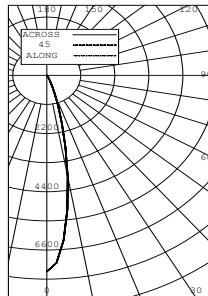
18W LED 3000K-83

SPOT
DISTRIBUTION
LTL # 818224



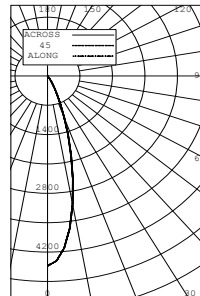
Candelas at Nadir	
Deg	Candela
0	11367
5	8488
15	1846
25	199
35	38
45	3

NARROW FLOOD
DISTRIBUTION
LTL # 818225



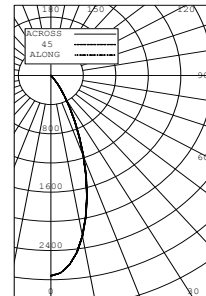
Candelas at Nadir	
Deg	Candela
0	7412
5	6254
15	1895
25	288
35	49
45	4

FLOOD
DISTRIBUTION
LTL # 818227



Candelas at Nadir	
Deg	Candela
0	4527
5	4117
15	1963
25	488
35	77
45	5

WIDE FLOOD
DISTRIBUTION
LTL # 818228

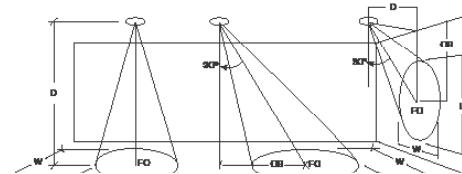


Candelas at Nadir	
Deg	Candela
0	2747
5	2609
15	1715
25	693
35	149
45	8

APPLICATION DATA:

Notes and Definitions:

Beam spread is to 50% center beam candlepower (CBCP).
 D=Distance to floor or wall.
 FC=Footcandles on floor or wall at center beam aiming location.
 L=Effective Visual Beam length in feet (50% of maximum footcandle level).
 W=Effective Visual Beam width in feet (50% of maximum footcandle level).
 CB=Distance across or down to center beam location.



0° Aiming Angle
Horizontal
Footcandles

	D	FC	L		W	
			Horizontal	Vertical	Horizontal	Vertical
SPOT	5.0'	286	1.9	1.9	1.9	1.9
	7.5'	157	2.7	2.7	2.7	2.7
	10.0'	97	3.3	3.3	3.3	3.3
	12.5'	65	3.9	3.9	3.9	3.9
NARROW FLOOD	5.0'	215	2.2	2.2	2.2	2.2
	7.5'	112	3.0	3.0	3.0	3.0
	10.0'	67	3.8	3.8	3.8	3.8
	12.5'	44	4.7	4.7	4.7	4.7
FLOOD	5.0'	148	2.7	2.7	2.7	2.7
	7.5'	73	3.7	3.7	3.7	3.7
	10.0'	43	4.8	4.8	4.8	4.8
	12.5'	28	5.9	5.9	5.9	5.9
WIDE FLOOD	5.0'	97	3.2	3.2	3.2	3.2
	7.5'	46	4.6	4.6	4.6	4.6
	10.0'	26	6.1	6.1	6.1	6.1
	12.5'	17	7.6	7.6	7.6	7.6