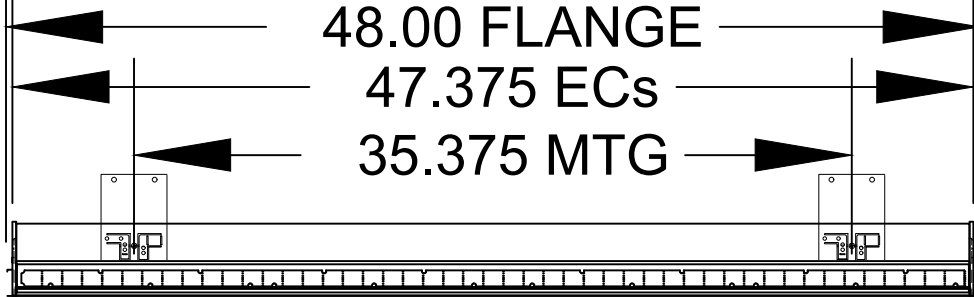


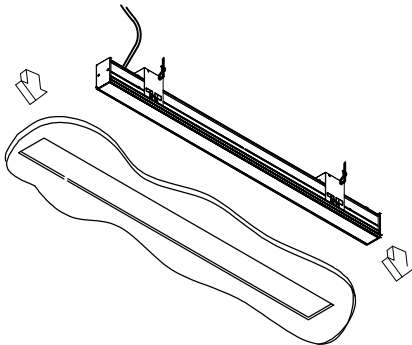
**WARNING - RISK OF FIRE AND ELECTRICAL SHOCK. FIXTURE MUST BE INSTALLED BY A QUALIFIED ELECTRICIAN ONLY. FIXTURE IS INTENDED FOR INSTALLATION IN ACCORDANCE WITH THE NATIONAL ELECTRICAL CODE, LOCAL AND FEDERAL SPECIFICATIONS. DISCONNECT POWER AT ELECTRICAL PANEL BEFORE SERVICING.**  
**RETAIN THESE INSTRUCTIONS FOR MAINTENANCE REFERENCE.**

**CAR2.0 FLG  
 RUN LENGTHS**



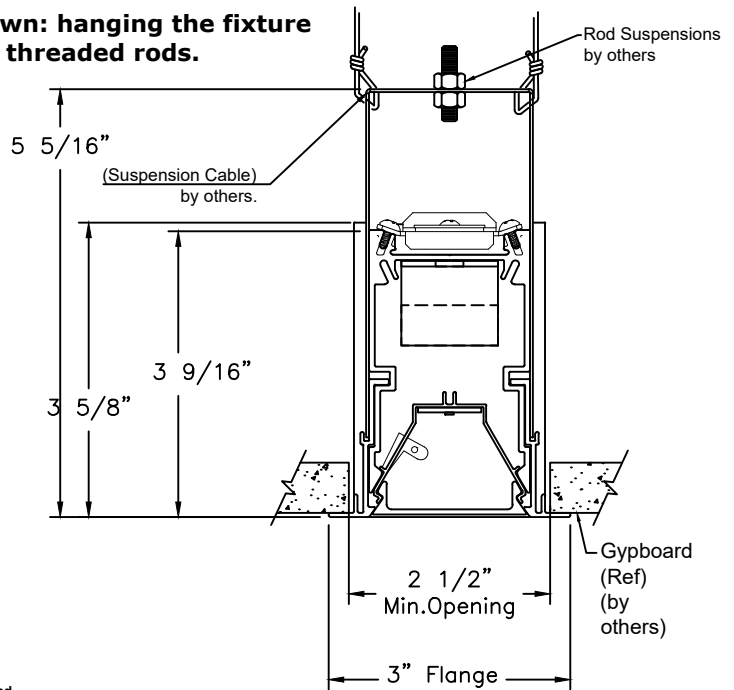
**1" Nominal  
 Increments for lengths**

FIXTURES TO BE INSTALLED PER NEC "MEANS OF SUPPORT AND ALL FEDERAL, NATIONAL AND LOCAL BUILDING CODES.



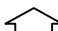
1. FIXTURE TO BE INSTALLED BEFORE CEILING.
2. E.C. TO SECURE FIXTURE PER NEC CODE, VIA THREADED RODS, WIRE TIES OR OTHER MEANS (HARDWARE SUPPLIED BY E.C.).
3. TURN POWER OFF AT ELECTRICAL PANEL. USE ACCESS PLATE KNOCK OUTS AS REQUIRED, MAKE ELECTRICAL CONNECTIONS.

**Shown: hanging the fixture via threaded rods.**

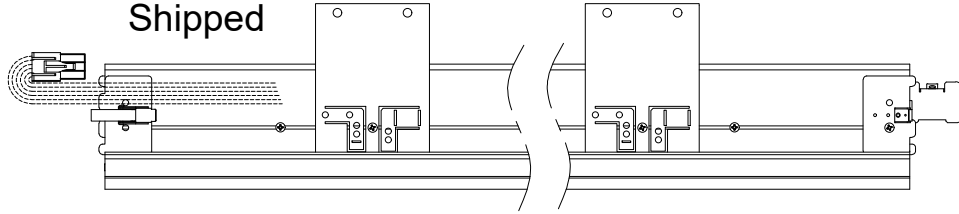


See wiring schematic provided with fixture for wire colors and their specific functions as different fixture options may use wires for different purposes.  
**DO NOT CONNECT CONTROL WIRES TO LINE VOLTAGE.**  
 Amerlux is not liable for damage due to miswiring.

Contact factory with any questions.

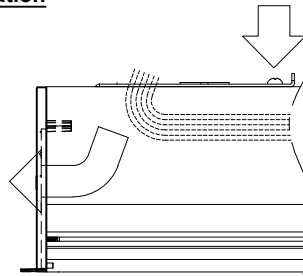
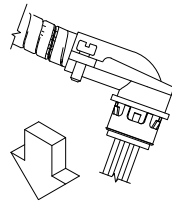
 Contractor's responsibility to hold these dimensions before & after installation.

**MOR Fixture As Shipped**



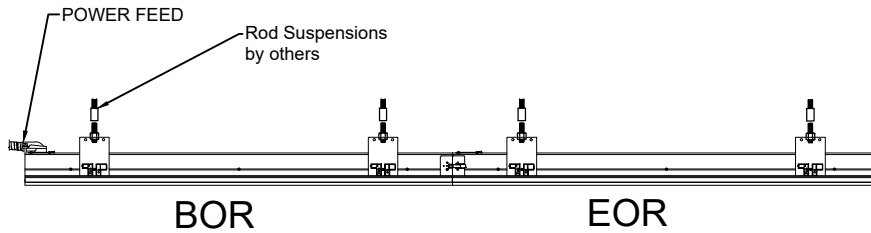
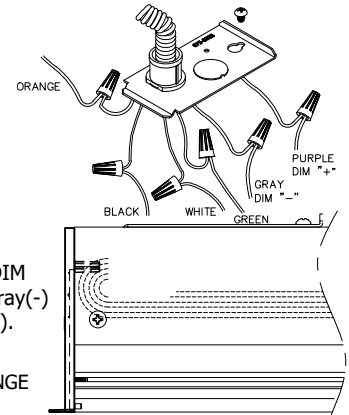
**Connect Feed to appropriate Fixtures**

Identify which fixtures require a feed and connect the appropriate kit. For detailed instructions, see installation sheet packed in Feed Kits

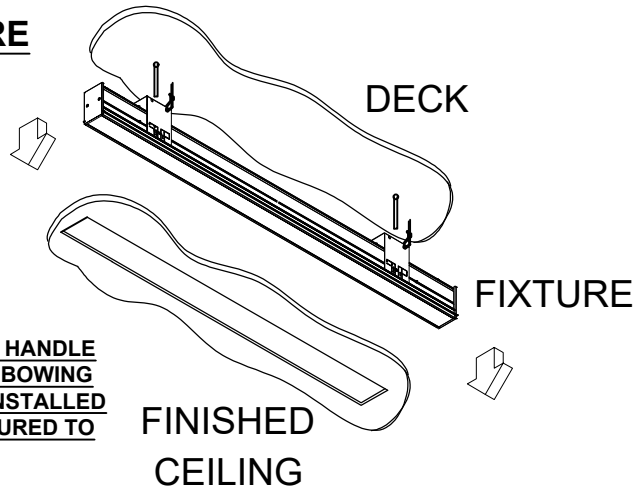


**ACCESS PLATE DETAIL**  
**FEED WIRING CONNECTIONS**  
 0-10V DIM shown. For non-DIM applications cap Purple(+)/Gray(-) (wire nuts supplied by others).

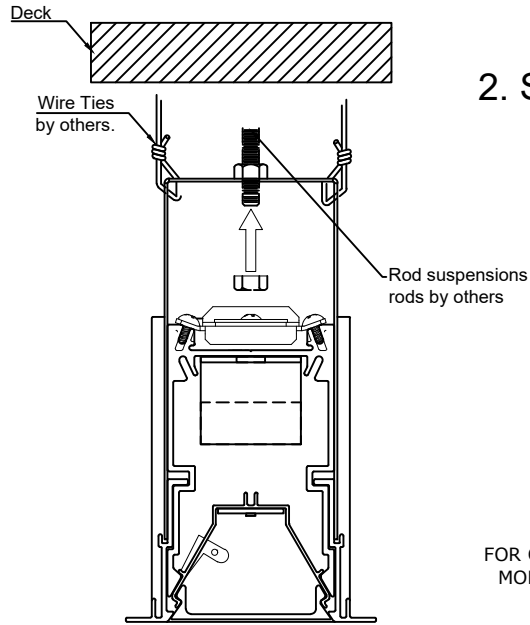
**Other Wiring (not Shown):**  
 LUTRON 3-WIRE DIM-HOT: ORANGE  
 LUTRON ECO: PURPLE, GRAY  
 DALI: PURPLE, GRAY



**1. INSTALLING FIXTURE**



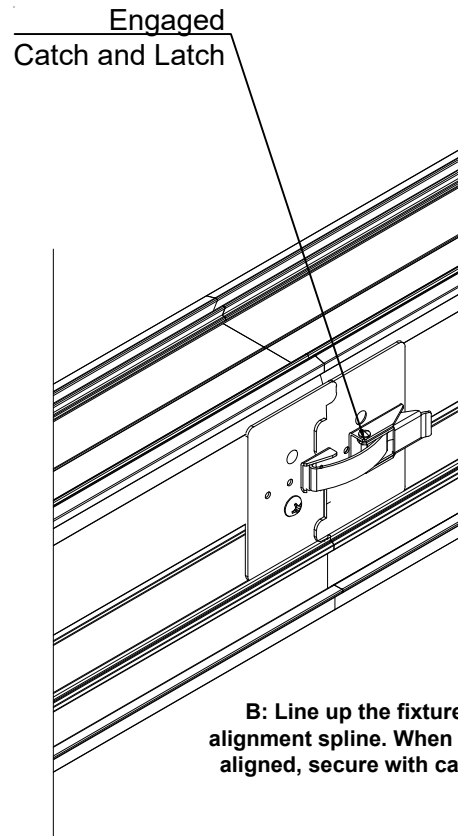
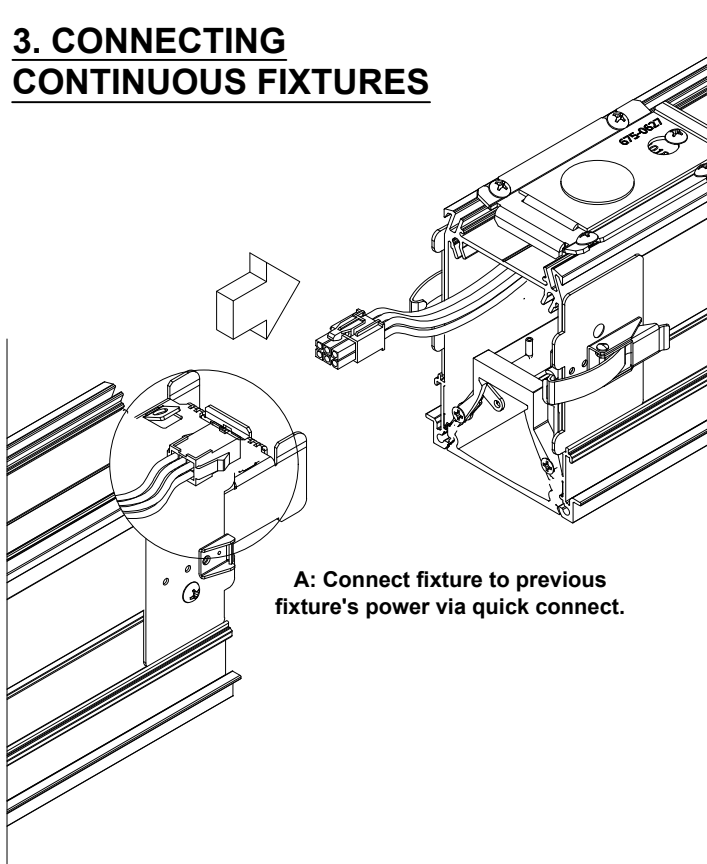
**LIFT FIXTURE TO CEILING DECK. HANDLE FIXTURE CAREFULLY TO AVOID BOWING AND/ OR FIXTURE DISTORTION. INSTALLED FIXTURE TO BE LEVEL AND SECURED TO GRID.**

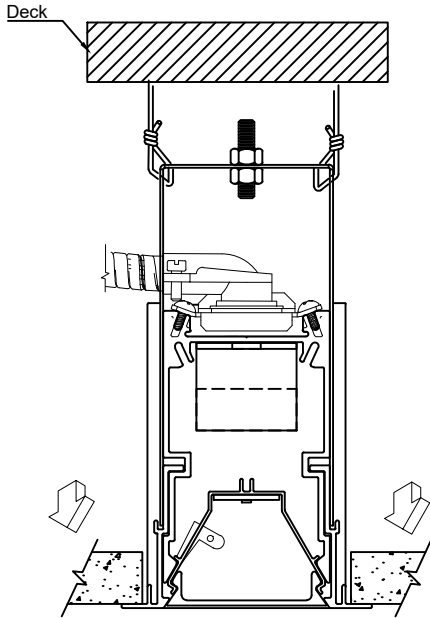


2. Secure fixture to deck with rod suspension and wire ties.

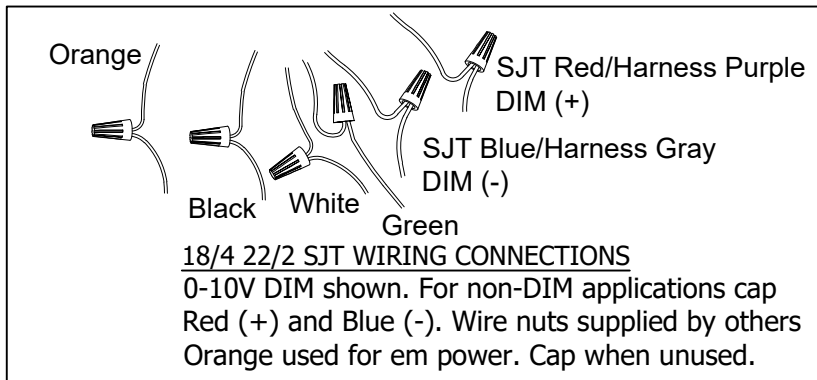
FOR CONTINUOUS ROWS INSTALL BOR-BEGINING OF ROW, MOR-MIDDLE OF ROW, AND EOR-END OF ROW FIXTURE SECTION PER PLAN.

**3. CONNECTING CONTINUOUS FIXTURES**





4. Install ceiling after fixture install and make power connections



## Maintenance

- Make sure to turn off all power to fixture before maintenance.
- Prior to ANY work, touch metal on fixture to discharge any build up of static electricity.
- To access internal components, first remove lens.

### 1.) LED Fixture:

Consult Amerlux for LED maintenance.

### 2.) LED Replacement:

For LED board replacement, remove screw and slide board out of reflector. Follow instructions on next page.

### 3.) Driver maintenance:

Drivers are located beneath bottom reflectors, secured by (2) clips

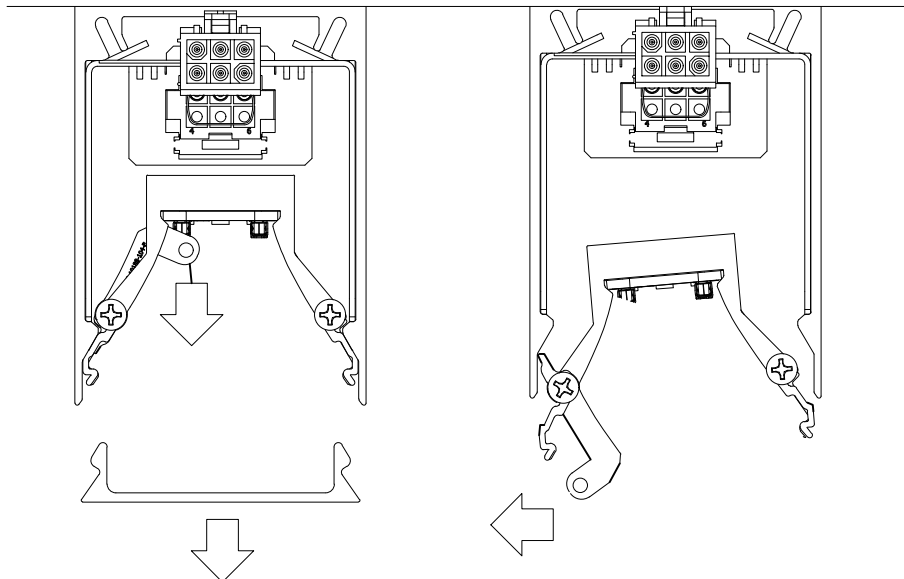
Remove 1 clip and loosen other to remove driver

For driver replacement, please specify:

Manufacturer, Model No, and Current Setting ( \_\_\_\_mA).

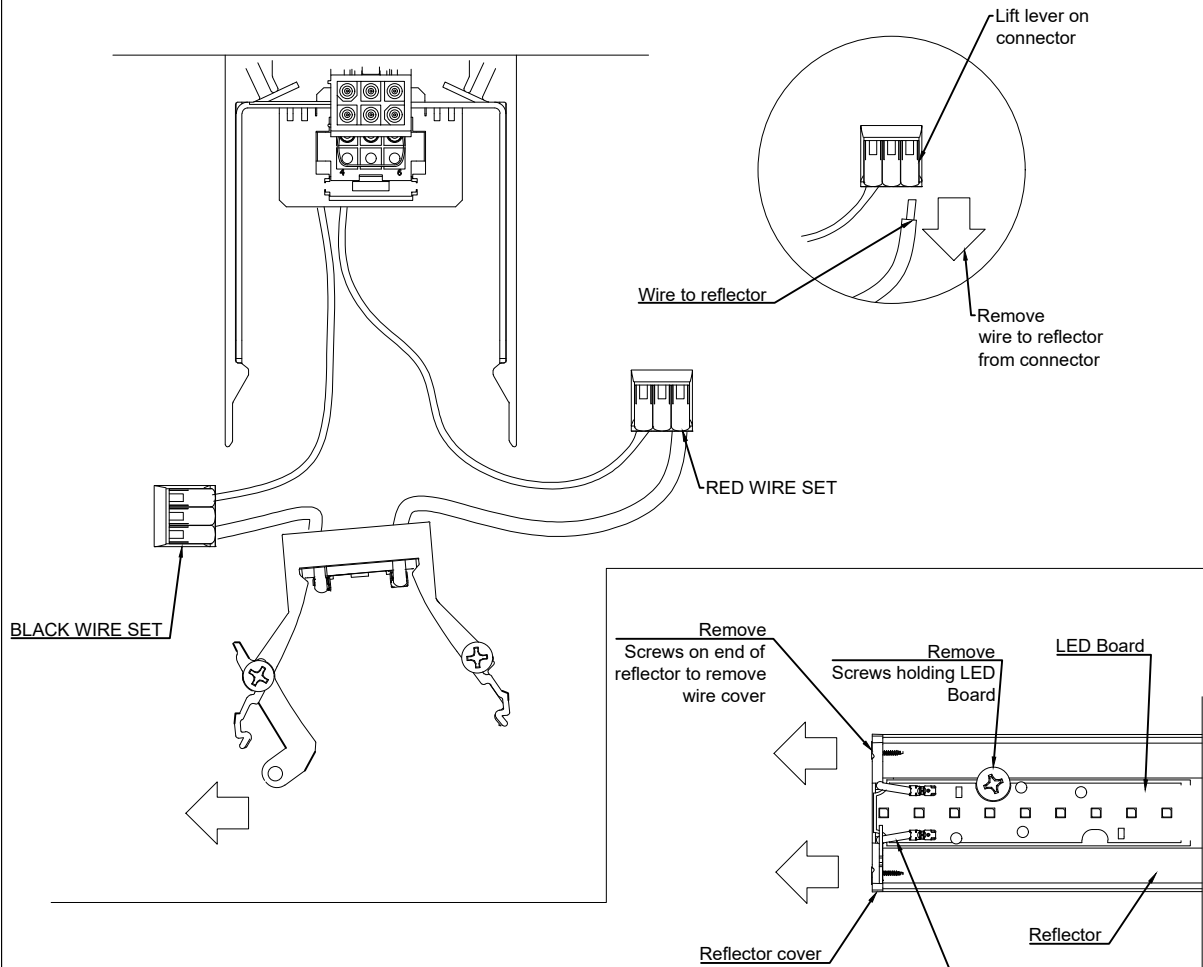
See 710-0134 Wiring Schematic for standard fixtures

See 710-1080 Wiring Schematic for 2-Color tunable white fixtures



**Maintenance**

Disconnect reflector by removing wires at wago lever connector.



- 1.) Remove screws from Board and end of Reflector holding down reflector end cover.
- 2.) Slide board out and replace with new board. Board information must be provided to manufacturer when placing new order to deliver correct replacement.
- 3.) Follow steps in reverse to reinstall.

