

# ASR26 Series

## Utility HID Luminaire



Shown with optional CFIN

### Features

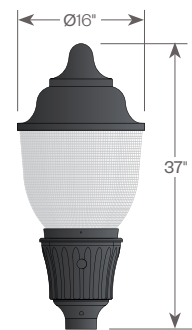
Lighting for exterior utility environments. The ASR26 Series consists of an efficient Type III (T3) or Type V (T5) refractive acorn combined with one of several styles of cast aluminum fitters.

### Product Overview

Wattage: 70W, 100W, 150W (MH)  
70W, 100W, 150W (HPS)

### PROJECT:

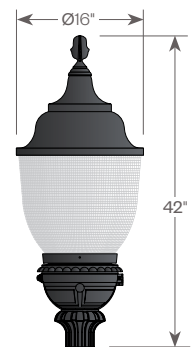
**PRODUCT DISCONTINUED**  
**Replacement Product:**  
**ASR26 Utility Series LED (AVI-G3)**



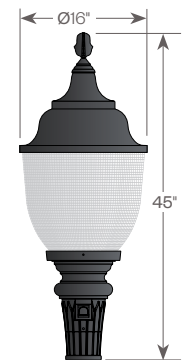
DUF1-ASR26/CFIN



DUF4-ASR26/CFIN



DUF34-ASR26/CFIN



DUF37-ASR26/CFIN

#### Installation:

The luminaire will mount to a 3" O.D. post or tee on 1/2", 5/8", 1" black oxide coated galvanized steel set screws to ensure a solid connection. The diffuser will be held to the fitter by (4) 1/4"-20 black oxide coated stainless steel captive set screws.

#### Electrical:

- High power factor ballast (HPF), core and coil type, pre-wired and tested
- Easy ballast pod access
- 4KV pulse rated porcelain socket

#### Diffuser Choices:

- Acrylic Type III (AC-T3)
- Acrylic Type V (AC-T5)
- Polycarbonate Type III (PC-T3)
- Polycarbonate Type V (PC-T5)

#### Finish:

Durable thermoset polyester powdercoat finish in the following:

- Satin Black (BLK)
- Classic Bronze (CLB)
- Gloss Textured Bronze (GBZ)
- Green (GRN)
- Gloss Textured Black (GTB)
- Textured Black (TBK)
- Gloss Textured Green (TGR)

#### Accessories:

- Cast aluminum Finial (CFIN)
- Faceted Downlight Reflector (FDR)
- 90 Degree house-side shield (HSS-90)
- 180 Degree house-side shield (HSS-180)
- Twistlock Photocell (TW-PCL)

ETL listed, suitable for wet locations.

**Note: All fitters include a 3-pin twist lock receptacle and an access door with window for the photocell. The photocell device is optional.**



# ASR26 Series

Utility HID Luminaire



## PROJECT:

## TYPE:

### Ordering Information



- 1** Model  
**DUF1-ASR26**  
**DUF4-ASR26**  
**DUF34-ASR26**  
**DUF37-ASR26**

- 2** Diffuser Choices  
**AC-T3** - Acrylic Type 3  
**AC-T5** - Acrylic Type 5  
**PC-T3** - Polycarbonate Type 3  
**PC-T5** - Polycarbonate Type 5

- 3** Light Source  
**70MH** - 70W Metal Halide  
**100MH** - 100W Metal Halide  
**150MH** - 150W Metal Halide  
**70HPS** - 70W High Pressure Sodium  
**100HPS** - 100W High Pressure Sodium  
**150HPS** - 150W High Pressure Sodium  
**MDO** - Medium Socket Only  
**MGO** - Mogul Socket Only

- 4** Voltage  
**120V**  
**208V**  
**240V**  
**277V**

- 5** Finish  
**BLK** - Satin Black  
**CLB** - Classic Bronze  
**GBZ** - Gloss Textured Bronze  
**GRN** - Green  
**GTB** - Gloss Textured Black  
**TBK** - Textured Black  
**TGR** - Gloss Textured Green  
**CSTM** - Custom

- 6** Accessories  
**HSS-90** - 90° House Side Shield  
**HSS-180** - 180° House Side Shield  
**TW-PCL** - Twistlock Photocell

# ASR26 Series

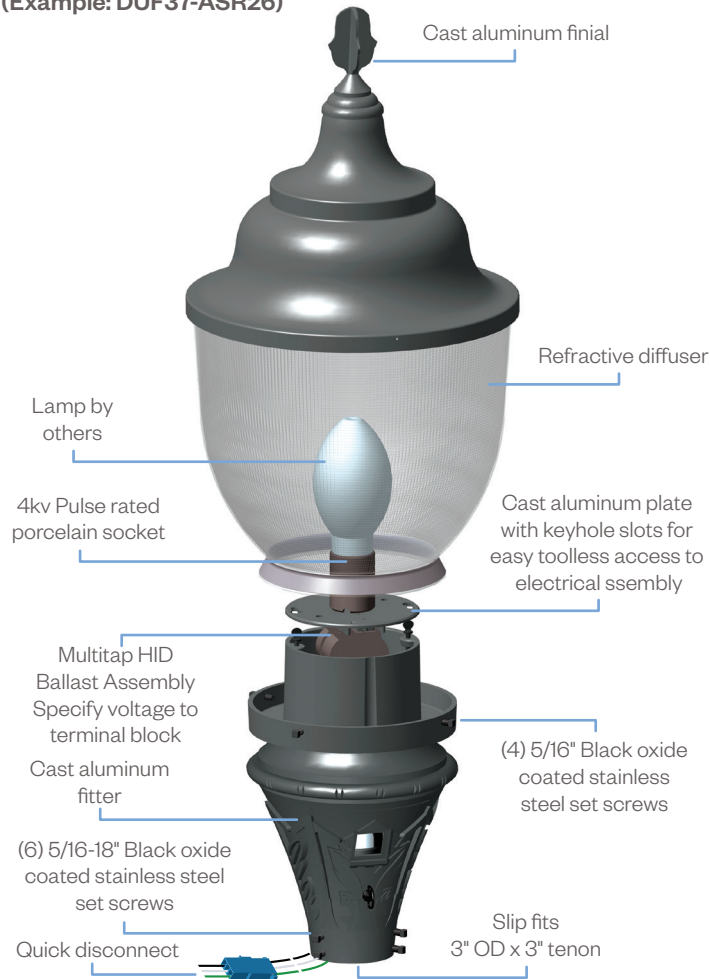
Utility HID Luminaire



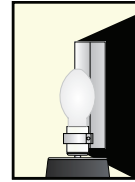
## PROJECT:

## TYPE:

### Assembly Details (Example: DUF37-ASR26)



### Options



**HSS90 & HSS180**  
House Side Shield  
for use with  
Optical Systems



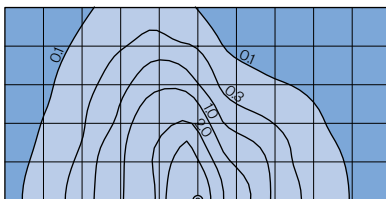
**FDR**  
Faceted  
Downlight  
Reflector

### Socket Types

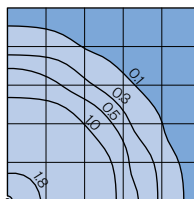
Wattage	Socket Type
70MH, 100MH, 150MH	Medium
70HPS, 100HPS	Medium
150HPS	Mogul

### Photometry

Type III (T3)



Type V (T5)



Typical HID light source  
150MH  
14,000 Lumens  
12' Mounting Height  
Grid Spacing is 12'