

ARP23 Series

Utility HID Luminaire



Features

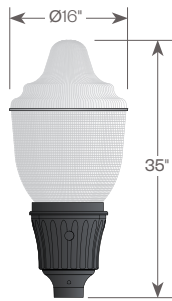
Decorative lighting for residential roadway and commercial property, where independent fixture control is desired. The ARP23 Series consists of an efficient Type III (T3) or Type V (T5) refractive acorn combined with one of several styles of cast aluminum fitters.

Product Overview

Wattage: 70W, 100W, 150W (MH)
70W, 100W, 150W (HPS)

PROJECT:

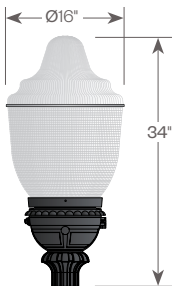
PRODUCT DISCONTINUED
Replacement Product:
ARP23 Utility Series LED (AVI-G3)



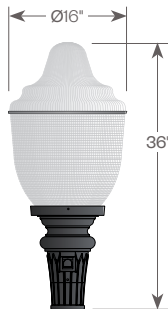
DUF1-ARP23



DUF4-ARP23



DUF34-ARP23



DUF37-ARP23

Installation:

The luminaire will mount to a 3" O.D. post or temporarily to a 5/8" black oxide coated galvanized steel set screws to ensure a solid connection. The diffuser will be held to the fitter by (4) 1/4"-20 black oxide coated stainless steel captive set screws.

Electrical:

- High power factor ballast (HPF), core and coil type, pre-wired and tested
- Easy ballast pod access
- 4KV pulse rated porcelain socket

Diffuser Choices:

- Acrylic Type III (AC-T3)
- Acrylic Type V (AC-T5)
- Polycarbonate Type III (PC-T3)
- Polycarbonate Type V (PC-T5)

Finish:

Durable thermoset polyester powdercoat finish in the following:

- Satin Black (BLK)
- Classic Bronze (CLB)
- Gloss Textured Bronze (GBZ)
- Green (GRN)
- Gloss Textured Black (GTB)
- Textured Black (TBK)
- Gloss Textured Green (TGR)

Accessories:

- Cast aluminum Finial (CFIN)
- Faceted Downlight Reflector (FDR)
- 90 Degree house-side shield (HSS-90)
- 180 Degree house-side shield (HSS-180)
- Twistlock Photocell (TW-PCL)

ETL listed, suitable for wet locations.

Note: All fitters include a 3-pin twist lock receptacle and an access door with window for the photocell. The photocell device is optional.



Standard



with SLL-FDR (T5 only)

ARP23 Series

Utility HID Luminaire



PROJECT:

TYPE:

Ordering Information



Add additional accessories as needed

1

Model

DUF1-ARP23
DUF4-ARP23
DUF34-ARP23
DUF37-ARP23

2

Diffuser Choices

AC-T3 - Acrylic Type 3
AC-T5 - Acrylic Type 5
PC-T3 - Polycarbonate Type 3
PC-T5 - Polycarbonate Type 5

3

Light Source

70MH - 70W Metal Halide
100MH - 100W Metal Halide
150MH - 150W Metal Halide
70HPS - 70W High Pressure Sodium
100HPS - 100W High Pressure Sodium
150HPS - 150W High Pressure Sodium
MDO - Medium Socket Only
MGO - Mogul Socket Only

4

Voltage

120V
208V
240V
277V

5

Finish

BLK - Satin Black
CLB - Classic Bronze
GBZ - Gloss Textured Bronze
GRN - Green
GTB - Gloss Textured Black
TBK - Textured Black
TGR - Gloss Textured Green
CSTM - Custom

6

Accessories

CFIN - Cast Aluminum Finial
FDR - Faceted Downlight Reflector
HSS-90 - 90° House Side Shield
HSS-180 - 180° House Side Shield
TW-PCL - Twistlock Photocell

ARP23 Series

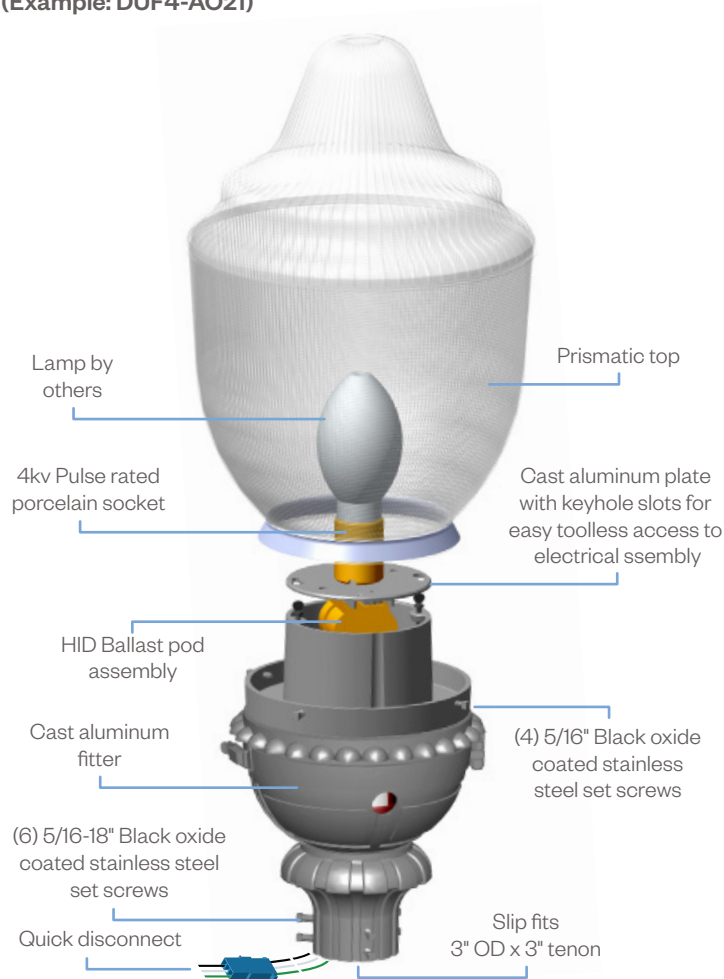
Utility HID Luminaire



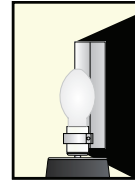
PROJECT:

TYPE:

Assembly Details (Example: DUF4-AO21)



Options



HSS90 & HSS180
House Side Shield
for use with
Optical Systems



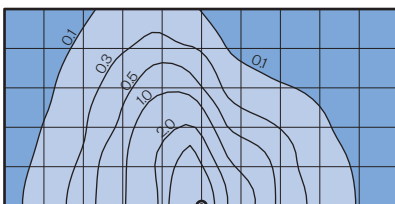
FDR
Faceted
Downlight
Reflector

Socket Types

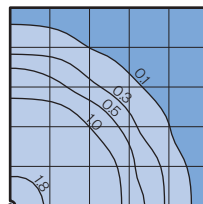
Wattage	Socket Type
70MH, 100MH, 150MH	Medium
70HPS, 100HPS	Medium
150HPS	Mogul

Photometry

Type III (T3)



Type V (T5)



Typical HID light source
14,000 Lumens
12' Mounting Height
Grid Spacing is 12'