

# DUCG Series

## Utility HID Luminaire



### Features

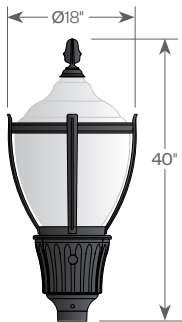
Decorative lighting for residential roadway and commercial properties, where independent fixture control is desired. The DU770AP Series consists of a cast aluminum fitter and cage assembly surrounding a clear or white textured lens and a spun aluminum top. An optional Type III (L3) or Type V (L5) internal glass refractor is also available.

### Product Overview

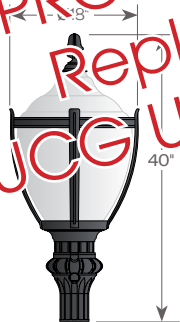
Wattage: 70W, 100W, 150W (MH)  
70W, 100W, 150W (HPS)

### PROJECT:

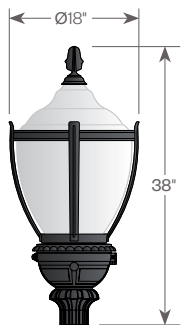
PRODUCT DISCONTINUED  
Replacement Product:  
DUCG Utility Series LED (AVI-G3)



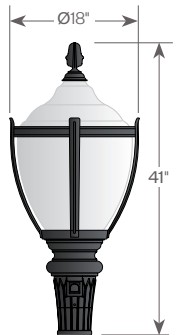
DUCG-F1



DUCG-F4



DUCG-F34



DUCG-F37

#### Installation:

The luminaire will mount to a 3" O.D. post or terminal with 5/8" black oxide coated stainless steel set screws to ensure a solid connection. The diffuser will be held to the fitter by (4) 5/16"-18 black oxide coated stainless steel captive set screws.

#### Electrical:

- High power factor ballast (HPF), core and coil type, pre-wired and tested
- Easy ballast pod access
- 4KV pulse rated porcelain socket

#### Diffuser Choices:

- Clear Textured Polycarbonate (PC-CL)
- White Textured Polycarbonate (PC-WH)
- Clear Textured DR Acrylic (DR-CL)

#### Finish:

Durable thermoset polyester powdercoat finish in the following:

- Satin Black (BLK)
- Classic Bronze (CLB)
- Gloss Textured Bronze (GBZ)
- Green (GRN)
- Gloss Textured Black (GTB)
- Textured Black (TBK)
- Gloss Textured Green (TGR)

#### Accessories:

- Cast aluminum finial (CFIN)
- 90 Degree house-side shield (HSS-90)
- 180 Degree house-side shield (HSS-180)
- Twistlock Photocell (TW-PCL)

ETL listed, suitable for wet locations.

**Note:** All fitters include a 3-pin twist lock receptacle and an access door with window for the photocell. The photocell device is optional.



Standard



with FDR (CL only)

# DUCG Series

Utility HID Luminaire



PROJECT:

TYPE:

## Ordering Information



\* Leave blank if not selected

Add additional accessories as needed

- 1** Model  
DUCG-F1  
DUCG-F4  
DUCG-F34  
DUCG-F37

- 2** Diffuser Material-Color  
PC-CL - Clear Textured Polycarbonate  
PC-WH - White Textured Polycarbonate  
DR-CL - Clear Textured DR Acrylic

- 3** Optical Option (not required)  
L3 - Type 3 Refractor  
L5 - Type 5 Refractor  
FDR - Faceted Downlight Reflector

- 4** Light Source  
70MH - 70W Metal Halide  
100MH - 100W Metal Halide  
150MH - 150W Metal Halide  
70HPS - 70W High Pressure Sodium  
100HPS - 100W High Pressure Sodium  
150HPS - 150W High Pressure Sodium  
MDO - Medium Socket Only  
MGO - Mogul Socket Only

- 5** Voltage  
120V  
208V  
240V  
277V

- 6** Finish  
BLK - Satin Black  
CLB - Classic Bronze  
GBZ - Gloss Textured Bronze  
GRN - Green  
GTB - Gloss Textured Black  
TBK - Textured Black  
TGR - Gloss Textured Green  
CSTM - Custom

- 7** Accessories  
CFIN - Cast Aluminum Finial  
HSS-90 - 90° House Side Shield  
HSS-180 - 180° House Side Shield  
TW-PCL - Twistlock Photocell

# DUCG Series

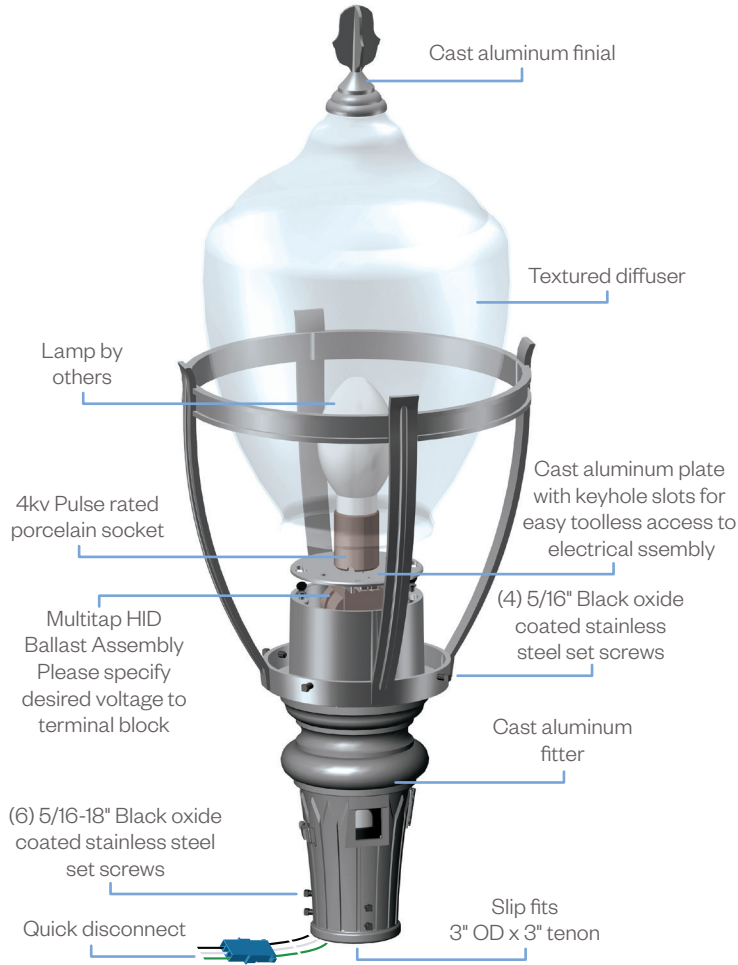
Utility HID Luminaire



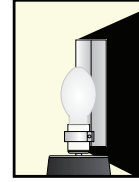
**PROJECT:**

**TYPE:**

**Assembly Details**  
(Example: DUCG-F37)



**Options**



**HSS90 & HSS180**  
House Side Shield  
for use with  
Optical Systems

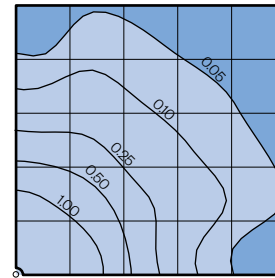


**FDR**  
Faceted  
Downlight  
Reflector



**L3 or L5**  
Type III or  
Type V  
Glass Refractor

**Photometry**



Typical HID light source  
150MH Lamp  
14,000 Lumens  
12' Mounting Height  
Grid Spacing is 12'

**Socket Types**

Wattage	Socket Type
70MH, 100MH, 150MH	Medium
70HPS, 100HPS	Medium
150HPS	Mogul