

AO25 Series

Utility LED Luminaire



Features

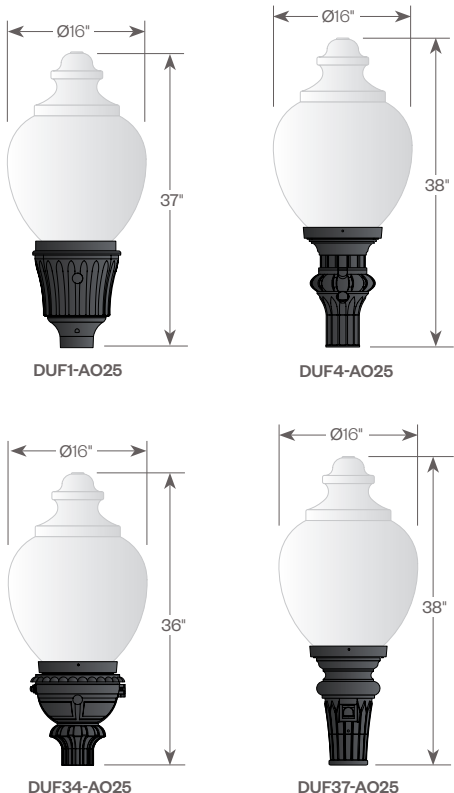
Decorative lighting for residential roadway and commercial property, where independent fixture control is desired. The AO25 Series consists of a decorative acorn combined with one of several styles of cast aluminum fitters. Powered by the Amerlux patented AVISTA® LED system with options for intensity, distribution and color.

Product Overview

| | |
|----------------|-------------------------|
| Wattage: | 27W, 38W, 68W |
| Lumen Output : | 7,533 lm (1200M, 4000K) |
| Color Temp: | 2700K, 3000K, 4000K |
| Dimming: | 0-10V dimming |

PROJECT:

TYPE:



Installation:

The luminaire will mount to a 3" OD post or tenon with 5/16" black oxide coated stainless steel set screws to ensure a solid connection. The diffuser will be held to the fitter by (4) 1/4"-20 black oxide coated stainless steel set screws.

Electrical:

- Over voltage and short circuit protected driver
- Series connected 10kV/20kA surge protector
- Automatic AC incoming voltage sensing (120V-277V)
- 0-10V dimming
- 3 pin twistlock receptacle included (photocell optional)
- Optional 7 pin twistlock receptacle available, consult factory

Diffuser Choices:

- Clear Textured Polycarbonate (PC-CL)
- White Textured Polycarbonate (PC-WH)
- Clear Textured DR Acrylic (DR-CL)

Distribution:

- Symmetric (SY)
- Asymmetric (AS)
- Street Optic (SO)

CCT:

- 2,700K (27)
- 3,000K (30)
- 4,000K (40)

Power Level:

- 500mA (27W) (500M)
- 700mA (38W) (700M)
- 1200mA (68W) (1200M)

L70:

72,000+ hrs.

Finish:

Durable thermoset polyester powdercoat finish in the following:

- Satin Black (BLK)
- Classic Bronze (CLB)
- Gloss Textured Bronze (GBZ)
- Green (GRN)
- Gloss Textured Black (GTB)
- Textured Black (TBK)
- Gloss Textured Green (TGR)

ETL listed, suitable for wet locations.

Accessories:

- Cast aluminum Finial (CFIN)
- Twistlock Photocell (TW-PCL)



5 year limited warranty
AMERLUX LED



AO25 Series

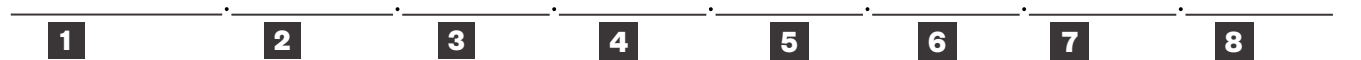
Utility LED Luminaire



PROJECT:

TYPE:

Ordering Information



- 1** Model
DUF1-AO25
DUF4-AO25
DUF34-AO25
DUF37-AO25

- 2** Diffuser Material-Color
PC-CL - Clear Textured Polycarbonate
PC-WH - White Textured Polycarbonate
DR-CL - Clear Textured DR Acrylic

- 3** LED System
AVI2 - Avista light engine, standard model

- 4** Light Distribution
SY - Symmetric
AS - Asymmetric
SO - Street Optic

- 5** CCT
27 - 2700K
30 - 3000K
40 - 4000K

- 6** Power Level
500M - 500 mA (27W)
700M - 700 mA (38W)
1200M - 1200 mA (68W)

- 7** Finish
BLK - Satin Black
CLB - Classic Bronze
GBZ - Gloss Textured Bronze
GRN - Green
GTB - Gloss Textured Black
TBK - Textured Black
TGR - Gloss Textured Green
CSTM - Custom

- 8** Accessories
CFIN - Cast Aluminum Finial
TW-PCL - Twistlock Photocell
7PIN - 7 Pin Twistlock Receptacle
Note: All fitters include a 3-pin twistlock receptacle and an access door with window for the photocell. The photocell device is optional

AO25 Series

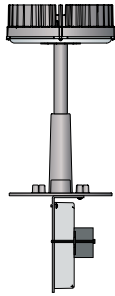
Utility LED Luminaire



PROJECT:

TYPE:

Engine Only Performance



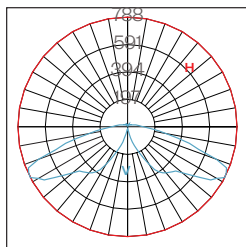
| LED System | Driver Output | System Watts | Light Distribution | CCT | Engine Only Lumens | Engine Only LPW | DLC Acorn Lumens | DLC Acorn LPW | Bug Rating w/Acorn | | |
|------------|--------------------|--------------|----------------------|------------|--------------------|-----------------|------------------|---------------|--------------------|-----|-------|
| AVI2 | 500M (500 mA) | 27W | SY (Symmetric) | 27 (2700K) | 3,057 | 113 | 2,831 | 105 | 2-3-2 | | |
| | | | | 30 (3000K) | 3,114 | 115 | 2,883 | 107 | 2-3-2 | | |
| | | | | 40 (4000K) | 3,407 | 126 | 3,155 | 117 | 2-3-2 | | |
| | | | AS (Asymmetric) | 27 (2700K) | 2,946 | 109 | 2,728 | 101 | 1-3-2 | | |
| | | | | 30 (3000K) | 3,000 | 111 | 2,778 | 103 | 1-3-2 | | |
| | | | | 40 (4000K) | 3,142 | 116 | 2,909 | 108 | 1-3-2 | | |
| | | | SO (Street Optic) | 27 (2700K) | 3,009 | 111 | 2,786 | 103 | 1-3-1 | | |
| | | | | 30 (3000K) | 3,065 | 114 | 2,838 | 107 | 1-3-1 | | |
| | | | | 40 (4000K) | 3,218 | 119 | 2,980 | 110 | 1-3-1 | | |
| | | | 700M (700 mA) | 38W | SY | 27 (2700K) | 4,114 | 108 | 3,809 | 100 | 2-3-2 |
| | | | | | | 30 (3000K) | 4,189 | 110 | 3,879 | 102 | 2-3-2 |
| | | | | | | 40 (4000K) | 4,585 | 121 | 4,245 | 112 | 2-3-2 |
| | AS | 27 (2700K) | | | 3,833 | 101 | 3,549 * | 93 | 2-3-2 | | |
| | | 30 (3000K) | | | 3,904 | 103 | 3,615 | 95 | 2-3-2 | | |
| | | 40 (4000K) | | | 4,089 | 108 | 3,786 | 100 | 2-3-2 | | |
| | SO | 27 (2700K) | | | 4,054 | 107 | 3,754 | 99 | 1-3-2 | | |
| | | 30 (3000K) | | | 4,129 | 109 | 3,823 | 101 | 1-3-2 | | |
| | | 40 (4000K) | | | 4,334 | 114 | 4,013 | 106 | 1-3-2 | | |
| | 1200M (1200 mA) | 68W | | | SY | 27 (2700K) | 7,131 | 105 | 6,603 * | 97 | 2-3-3 |
| | | | | | | 30 (3000K) | 7,263 | 107 | 6,725 | 99 | 2-3-3 |
| | | | | | | 40 (4000K) | 7,533 | 111 | 6,975 | 103 | 3-3-3 |
| | | | AS | 27 (2700K) | 6,862 | 101 | 6,354 * | 93 | 2-3-2 | | |
| | | | | 30 (3000K) | 6,989 | 103 | 6,471 | 95 | 2-3-2 | | |
| | | | | 40 (4000K) | 7,318 | 108 | 6,776 | 100 | 2-3-2 | | |
| SO | | | 27 (2700K) | 7,012 | 103 | 6,493 * | 95 | 2-3-3 | | | |
| | | | 30 (3000K) | 7,142 | 105 | 6,613 | 97 | 2-3-3 | | | |
| | | | 40 (4000K) | 7,500 | 110 | 6,944 | 102 | 2-3-3 | | | |

Approximate lumens delivered from raw light engine.

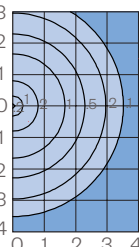
* These models are not DLC listed.

Photometry

AO25.PC-CL.AVI2.700M.SY.27

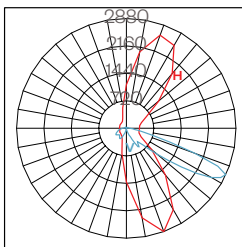


Maximum Candela = 788
 Located At Horizontal Angle = 0
 Vertical Angle = 62.5
 Vertical Plane Through Horizontal Angles
 (0 - 180) (Through Max. Cd.)
 Horizontal Cone Through Vertical Angle
 (62.5) (Through Max. Cd.)

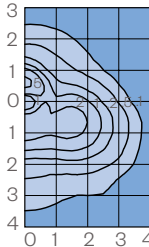


Distance in units of mounting height.
 Values based on 10' mounting height.

AO25.PC-CL.AVI2.700M.SO.27

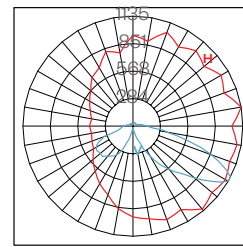


Maximum Candela = 2880
 Located At Horizontal Angle = 290
 Vertical Angle = 65
 Vertical Plane Through Horizontal Angles
 (290 - 110) (Through Max. Cd.)
 Horizontal Cone Through Vertical Angle
 (65) (Through Max. Cd.)

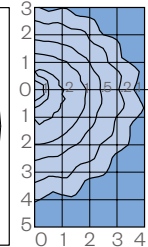


Distance in units of mounting height.
 Values based on 10' mounting height.

AO21.PC-CL.AVI2.700M.AS.27



Maximum Candela = 1135
 Located At Horizontal Angle = 10
 Vertical Angle = 60
 Vertical Plane Through Horizontal Angles
 (10 - 190) (Through Max. Cd.)
 Horizontal Cone Through Vertical Angle
 (60) (Through Max. Cd.)



Distance in units of mounting height.
 Values based on 10' mounting height.