

DU730AO Series

Utility LED Luminaire



Features

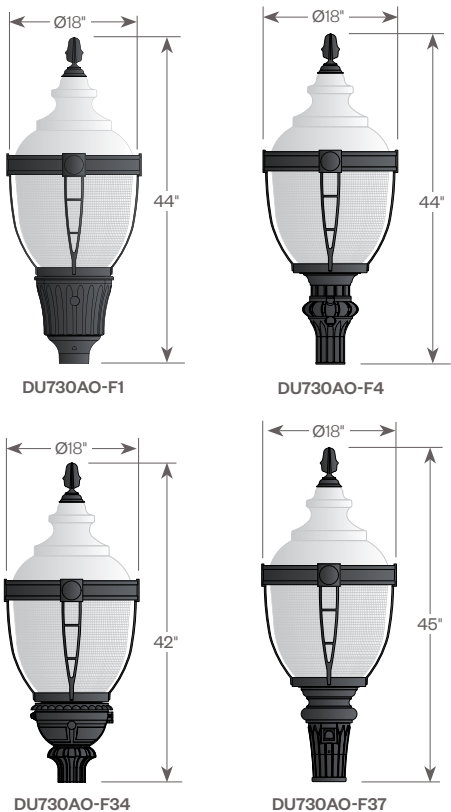
Decorative lighting for residential roadway and commercial properties, where independent fixture control is desired. The D730AO Series consists of an efficient Type III (T3) or Type V (T5) refractive lens combined with one of several styles of cast aluminum fitters and a decorative cage. Powered by the Amerlux patented AVISTA® LED system with options for intensity, distribution and color.

Product Overview

Wattage:	27W, 38W, 68W
Lumen Output :	7,533 lm (1200M, 4000K)
Color Temp:	2700K, 3000K, 4000K
Dimming:	0-10V dimming

PROJECT:

TYPE:



Installation:

The luminaire will mount to a 3" OD post or tenon with 5/16" black oxide coated stainless steel set screws to ensure a solid connection. The diffuser will be held to the fitter by (4) 1/4"-20 black oxide coated stainless steel captive set screws.

Electrical:

- Over voltage and short circuit protected driver
- Series connected 10kV/20kA surge protector
- Automatic AC incoming voltage sensing (120V-277V)
- 0-10V dimming
- 3 pin twistlock receptacle included (photocell optional)
- Optional 7 pin twistlock receptacle available, consult factory

Diffuser Choices:

- Acrylic Type III (**AC-T3**)
- Acrylic Type V (**AC-T5**)
- Polycarbonate Type III (**PC-T3**)
- Polycarbonate Type V (**PC-T5**)

CCT:

- 2,700K (**27**)
- 3,000K (**30**)
- 4,000K (**40**)

Power Level:

- 500mA (27W) (**500M**)
- 700mA (38W) (**700M**)
- 1200mA (68W) (**1200M**)

L70:

72,000+ hrs.

Finish:

Durable thermoset polyester powdercoat finish in the following:

- Satin Black (**BLK**)
- Classic Bronze (**CLB**)
- Gloss Textured Bronze (**GBZ**)
- Green (**GRN**)
- Gloss Textured Black (**GTB**)
- Textured Black (**TBK**)
- Gloss Textured Green (**TGR**)

Accessories:

- Twistlock Photocell (**TW-PCL**)

ETL listed, suitable for wet locations.



5 year limited warranty
AMERLUX LED



DU730AO Series

Utility LED Luminaire



PROJECT:

TYPE:

Ordering Information



- 1** Model
DU730AO-F1
DU730AO-F4
DU730AO-F34
DU730AO-F37
- 2** Diffuser Choices
AC-T3 - Acrylic Type 3
AC-T5 - Acrylic Type 5
PC-T3 - Polycarbonate Type 3
PC-T5 - Polycarbonate Type 5
- 3** LED System
AVI2-SY - Avista light engine, symmetric distribution
- 4** CCT
27 - 2700K
30 - 3000K
40 - 4000K
- 5** Power Level
500M - 500 mA (27W)
700M - 700 mA (38W)
1200M - 1200 mA (68W)

- 6** Finish
BLK - Satin Black
CLB - Classic Bronze
GBZ - Gloss Textured Bronze
GRN - Green
GTB - Gloss Textured Black
TBK - Textured Black
TGR - Gloss Textured Green
CSTM - Custom
- 7** Accessories
TW-PCL - Twistlock Photocell
7PIN - 7 Pin Twistlock Receptacle

Note: All fitters include a 3-pin twistlock receptacle and an access door with window for the photocell. The photocell device is optional

DU730AO Series

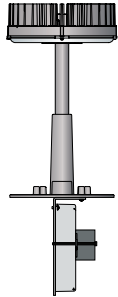
Utility LED Luminaire



PROJECT:

TYPE:

Engine Only Performance

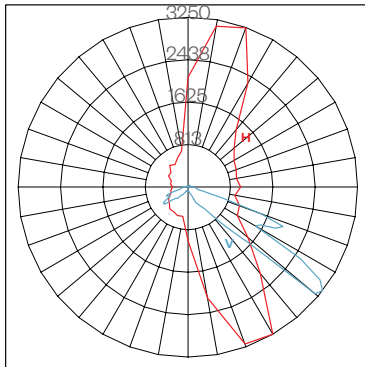


LED System	Driver Output	System Watts	CCT	Engine Only Lumens	Engine Only LPW	Bug Rating w/Acorn
AVI2-SY	500M (500 mA)	27W	27 (2700K)	3,057	113	2-3-2
			30 (3000K)	3,114	115	2-3-2
			40 (4000K)	3,407	126	2-3-2
	700M (700 mA)	38W	27 (2700K)	4,114	108	2-3-2
			30 (3000K)	4,189	110	2-3-2
			40 (4000K)	4,585	121	2-3-2
	1200M (1200 mA)	68W	27 (2700K)	7,131	105	2-3-3
			30 (3000K)	7,263	107	2-3-3
			40 (4000K)	7,533	111	3-3-3

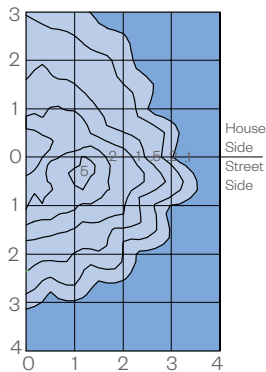
Approximate lumens delivered from raw light engine.

Photometry

D73x.AC-T3.AVI2-SY.40.700M

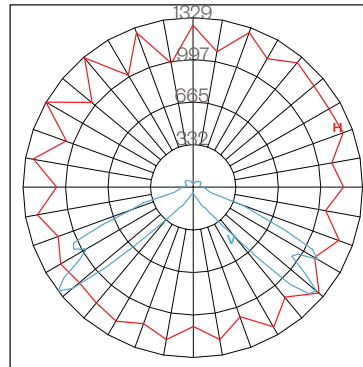


Maximum Candela = 3250
 Located At Horizontal Angle = 300
 Vertical Angle = 62.5
 Vertical Plane Through Horizontal Angles
 (300 - 120) (Through Max. Cd.)
 Horizontal Cone Through Vertical Angle
 (62.5) (Through Max. Cd.)

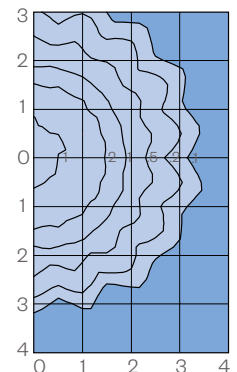


Distance in units of mounting height.
 Values based on 10' mounting height.

D73x.AC-T5.AVI2-SY.40.700M



Maximum Candela = 1329
 Located At Horizontal Angle = 150
 Vertical Angle = 52.5
 Vertical Plane Through Horizontal Angles
 (150-330) (Through Max. Cd.)
 Horizontal Cone Through Vertical Angle
 (52.5) (Through Max. Cd.)



Distance in units of mounting height.
 Values based on 10' mounting height.