

Passo SQ

6" Prismatic Glass LED Recessed Wall Luminaire

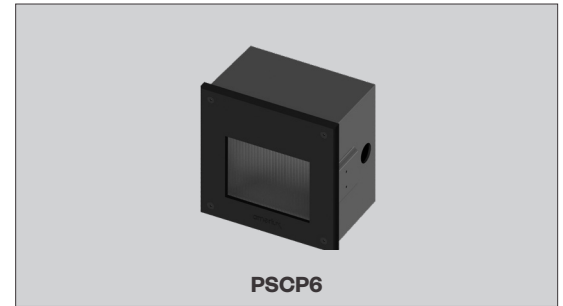


PROJECT:

TYPE:

Features

The Passo family of luminaires includes high quality, architecturally relevant fixtures suitable for use in both outdoor or indoor applications. All members of the Passo family feature an independently sealed optical chamber and fully potted driver. These features are especially beneficial in exterior applications as they help compensate for the challenges in getting a good seal between a pre-installed back box and the faceplate as well as those challenges in fully sealing the conduit system. Each luminaire is available in a choice of three output levels to help tailor the desired illuminance to the project and a standard 0-10V dimmable driver allows even further flexibility.



Product Overview

Type:	Recessed Wall Luminaire
Wattage:	up to 16.2W
Lumen Output:	up to 356 lm
Color Temp:	2700K, 3000K, 4000K
Dimming:	0-10V

Certifications



Fixture Summary

Application:

Designed for new construction in interior or exterior hollow walls or poured concrete.

Construction:

- Die-cast aluminum housing with protective powdercoat finish
- Sealed die-cast aluminum internal optical chamber
- Die-cast aluminum faceplate
- 1/8" tempered prismatic glass lens

Driver:

- Drive current (175, 350 or 700mA)
- 2.5kV surge protection
- Fully potted
- Input voltage 120V-277V auto-sensing
- 0-10V dimmable down to 10%

Optics:

Individually sealed optical chamber insures LEDs are secure independent of the installation of the back box.

Finish:

Premium quality thermoset polyester powdercoat faceplate for a durable finish.

ETL listed, suitable for wet locations.

Passo SQ

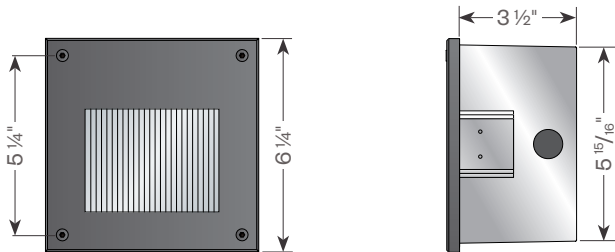
6" Prismatic Glass LED Recessed Wall Luminaire



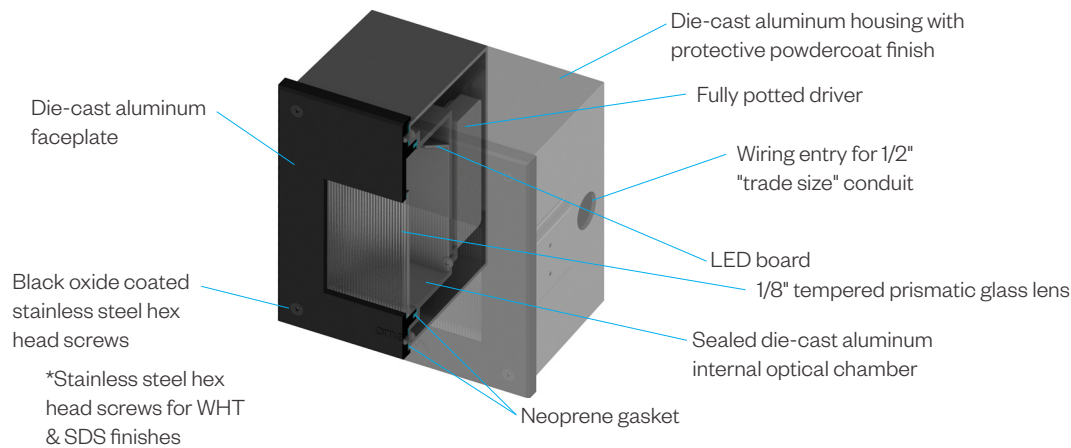
PROJECT:

TYPE:

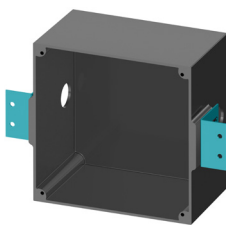
Product Detail



Construction Detail



Application Brackets *(included with order)*

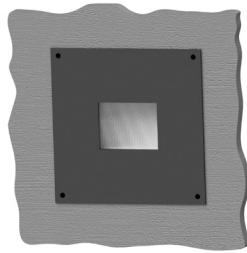


Horizontal Brackets
(Hollow Wall)

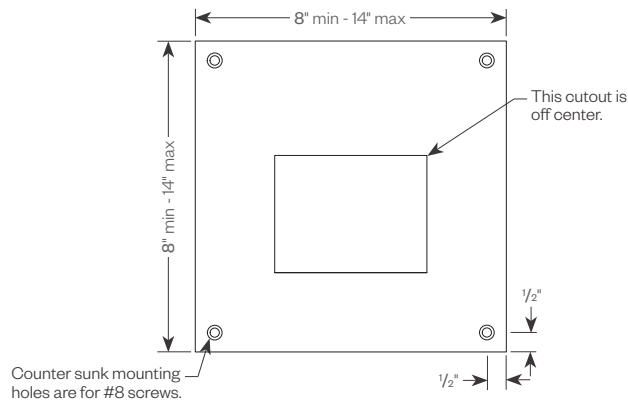
PROJECT:

TYPE:

Optional Adapter Plate Detail (for retrofit applications using an existing wall box or cavity)

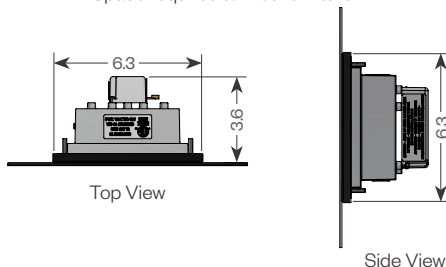


Front Mount Plate (FMP-PSCP6)

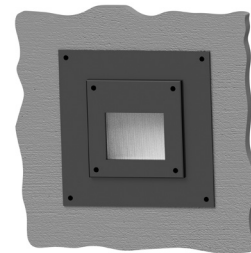


Standard dimensions from the corner are shown.
If alternate dimensions are needed, please specify.

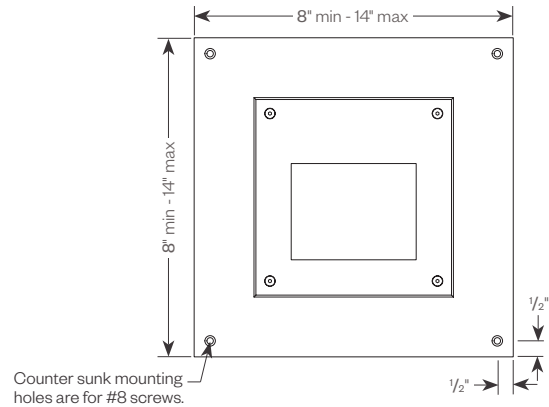
Space required to mount fixture.



Side View



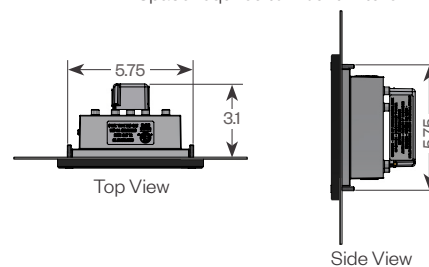
Rear Mount Plate (RMP-PSCx6)



Standard dimensions from the corner are shown.
If alternate dimensions are needed, please specify.

EDR Required for dimensions beyond the range shown.

Space required to mount fixture.



Side View

Performance Data

Performance Code	CCT/CRI	Approx. Lumens	Drive Current	Nominal Input Power
L27	2700K/80	128	175mA	4.2W
L30	3000K/80	134		
L40	4000K/70	144		
H27	2700K/80	179	350mA	8.1W
H30	3000K/80	188		
H40	4000K/70	201		
VH27	2700K/80	317	700mA	16.2W
VH30	3000K/80	333		
VH40	4000K/70	356		

Note: IES files available on our website. For VHxx data - use Hxx IES files with a 1.77 multiplier.

Polar Graph

