

AP24 Series

HID Luminaire



Features

Lighting for exterior retail, commercial and hospitality environments. The AP24 Series consists of a decorative acorn combined with one of several styles of cast aluminum fitters.

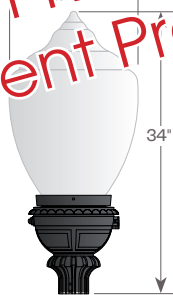
Product Overview

Wattage/Light Source: 70W, 100W, 150W / Metal Halide (MH)
70W, 100W, 150W / High Pressure Sodium (HPS)

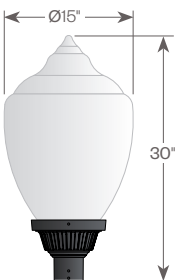
PROJECT:



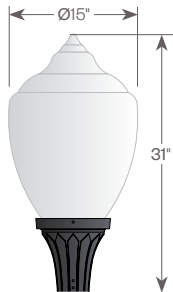
D131/AP24
EPA: 1.62



D134/AP24
EPA: 1.77



D135/AP24
EPA: 1.52



D136/AP24
EPA: 1.57

REPLACEMENT PRODUCT: AP24 Series LED (AVI-G3)

Installation:

This luminaire will mount to a 3" OD post or tenon with 5/16" black oxide coated stainless steel set screws to ensure a solid connection. The diffuser will be held to the fitter by (4) 5/16" - 18 black oxide coated stainless steel captive set screws.

Electrical:

- High power factor ballast (HPF), core and coil type, pre-wired and tested
- Easy ballast pod access
- 4KV pulse rated porcelain socket

Diffuser Choices:

- Clear Textured Polycarbonate (PC-CL)
- White Textured Acrylic (AC-WH)
- Clear Textured DR Acrylic (DR-CL)

Finish:

Durable thermoset polyester powdercoat finish in the following:

- Satin Black (BLK)
- Classic Bronze (CLB)
- Gloss Textured Bronze (GBZ)
- Green (GRN)
- Gloss Textured Black (GTB)
- Textured Black (TBK)
- Gloss Textured Green (TGR)

Accessories:

- Cast aluminum Finial (CFIN)
- 90 Degree house-side shield (HSS-90)
- 180 Degree house-side shield (HSS-180)
- Dusk-to-dawn Photocell (PCL)

ETL listed, suitable for wet locations.



Standard



with FDR (CL only)

AP24 Series

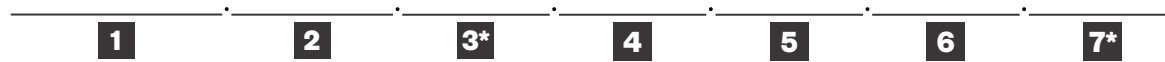
HID Luminaire



PROJECT:

TYPE:

Ordering Information



* Leave blank if not selected

Add additional accessories as needed

- | | |
|---|---|
| <p>1 <u>Model</u>
D131/AP24
D134/AP24
D135/AP24
D136/AP24</p> <p>2 <u>Diffuser Material-Color</u>
PC-CL - Clear Textured Polycarbonate
AC-WH - White Textured Acrylic
DR-CL - Clear Textured DR Acrylic</p> <p>3 <u>Optical Option (not required)</u>
L3 - Type 3 Refractor
L5 - Type 5 Refractor
FDR - Faceted Downlight Reflector</p> <p>4 <u>Light Source</u>
70MH - 70w Metal Halide
100MH - 100w Metal Halide
150MH - 150w Metal Halide
70HPS - 70w High Pressure Sodium
100HPS - 100w High Pressure Sodium
150HPS - 150w High Pressure Sodium
MDO - Medium Socket Only
MGO - Mogul Socket Only</p> <p>5 <u>Voltage</u>
120V
208V
240V
277V</p> | <p>6 <u>Finish</u>
BLK - Satin Black
CLB - Classic Bronze
GBZ - Gloss Textured Bronze
GRN - Green
GTB - Gloss Textured Black
TBK - Textured Black
TGR - Gloss Textured Green
CSTM - Custom</p> <p>7 <u>Accessories</u>
CFIN - Cast Aluminum Finial
HSS-90 - 90° House Side Shield
HSS-180 - 180° House Side Shield
PCL - Dusk-to-dawn button type photocell</p> |
|---|---|

AP24 Series

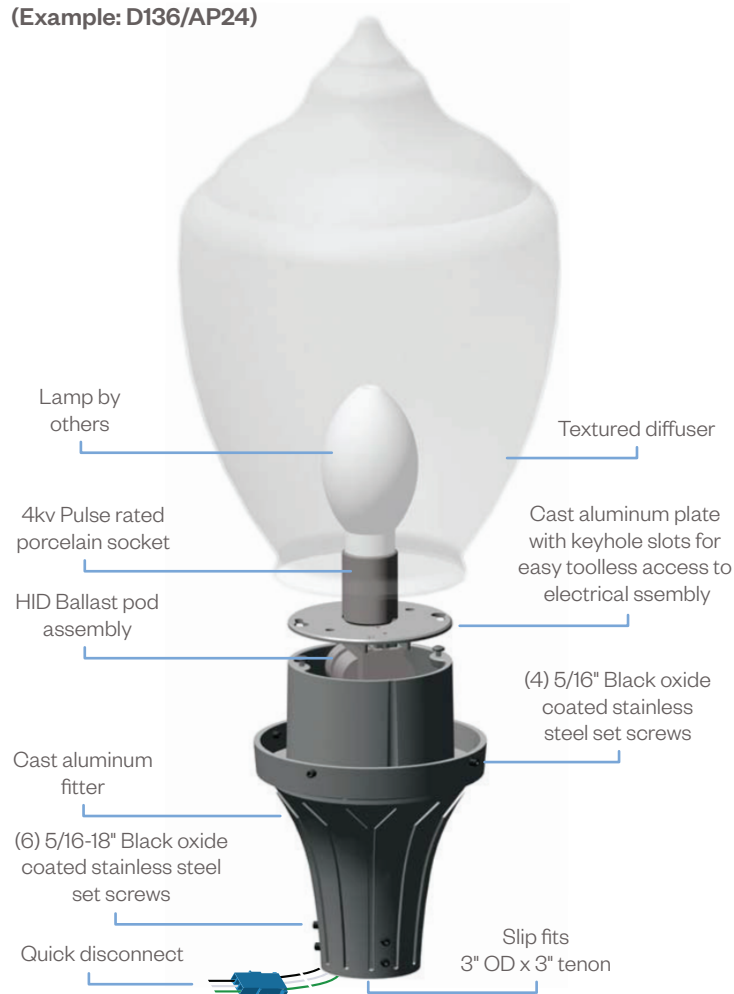
HID Luminaire



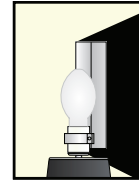
PROJECT:

TYPE:

Assembly Details (Example: D136/AP24)



Options



HSS90 & HSS180
House Side Shield
for use with
Optical Systems

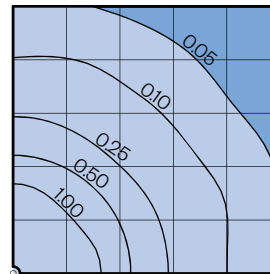


FDR
Faceted
Downlight
Reflector



L3 or L5
Type III or
Type V
Glass Refractor

Photometry



Socket Types

Wattage	Socket Type
70MH, 100MH, 150MH	Medium
70HPS, 100HPS	Medium
150HPS	Mogul