

AO21 Series

HID Luminaire



Features

Lighting for exterior retail, commercial and hospitality environments. The AO21 Series consists of a decorative acorn combined with one of several styles of cast aluminum fitters.

Product Overview

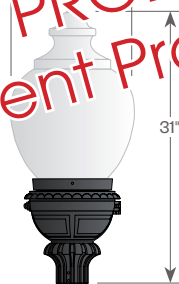
Wattage/Light Source: 70W, 100W, 150W / Metal Halide (MH)
70W, 100W, 150W / High Pressure Sodium (HPS)

PROJECT:

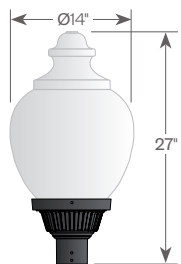
REPLACEMENT PRODUCT: AO21 Series LED (AVI-G3)



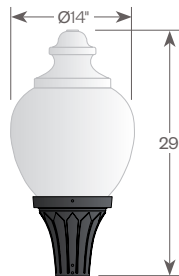
D131/AO21
EPA: 1.33



D134/AO21
EPA: 1.46



D135/AO21
EPA: 1.23



D136/AO21
EPA: 1.28

Installation:
The luminaire will mount to a 3" OD post or tenon with 5/16" black oxide coated stainless steel set screws to ensure a solid connection. The diffuser will be held to the fitter by (4) 5/16" - 18 black oxide coated stainless steel captive set screws.

Electrical:

- High power factor ballast (HPF), core and coil type, pre-wired and tested
- Easy ballast pod access
- 4KV pulse rated porcelain socket

Diffuser Choices:

- Clear Textured Polycarbonate (PC-CL)
- White Textured Acrylic (AC-WH)
- Clear Textured DR Acrylic (DR-CL)

Finish:

Durable thermoset polyester powdercoat finish in the following:

- Satin Black (BLK)
- Classic Bronze (CLB)
- Gloss Textured Bronze (GBZ)
- Green (GRN)
- Gloss Textured Black (GTB)
- Textured Black (TBK)
- Gloss Textured Green (TGR)

Accessories:

- Cast aluminum Finial (CFIN)
- 90 Degree house-side shield (HSS-90)
- 180 Degree house-side shield (HSS-180)
- Dusk-to-dawn Photocell (PCL)

ETL listed, suitable for wet locations.



Standard



with FDR (CL only)

AO21 Series

HID Luminaire



PROJECT:

TYPE:

Ordering Information



* Leave blank if not selected

Add additional accessories as needed

- 1** Model
D131/AO21
D134/AO21
D135/AO21
D136/AO21
- 2** Diffuser Material
PC-CL - Clear Textured Polycarbonate
AC-WH - White Textured Acrylic
DR-CL - Clear Textured DR Acrylic
- 3** Optical Option (not required)
L3 - Type 3 Refractor
L5 - Type 5 Refractor
FDR - Faceted Downlight Reflector
- 4** Light Source
70MH - 70w Metal Halide
100MH - 100w Metal Halide
150MH - 150w Metal Halide
70HPS - 70w High Pressure Sodium
100HPS - 100w High Pressure Sodium
150HPS - 150w High Pressure Sodium
MDO - Medium Socket Only
MGO - Mogul Socket Only
- 5** Voltage
120V
208V
240V
277V
- 6** Finish
BLK - Satin Black
CLB - Classic Bronze
GBZ - Gloss Textured Bronze
GRN - Green
GTB - Gloss Textured Black
TBK - Textured Black
TGR - Gloss Textured Green
CSTM - Custom
- 7** Accessories
CFIN - Cast Aluminum Finial
HSS-90 - 90° House Side Shield
HSS-180 - 180° House Side Shield
PCL - Dusk-to-dawn button type photocell

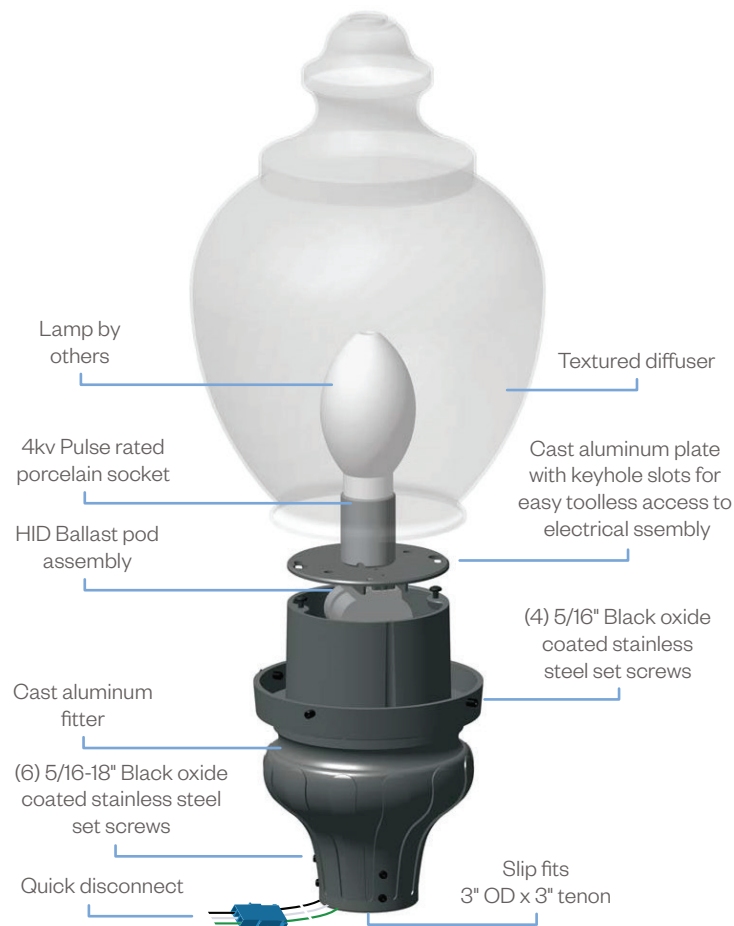
AO21 Series

HID Luminaire

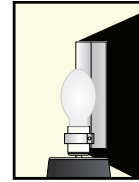
PROJECT:

TYPE:

Assembly Details (Example: D131/AO21)



Options



HSS90 & HSS180
House Side Shield
for use with
Optical Systems

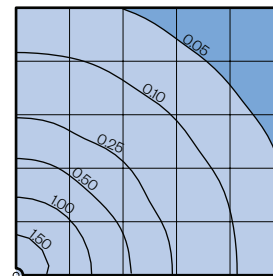


FDR
Faceted
Downlight
Reflector



L3 or L5
Type III or
Type V
Glass Refractor

Photometry



Typical HID light source
14,000 Lumens
12' Mounting Height
Grid Spacing is 12'

Socket Types

Wattage	Socket Type
70MH, 100MH, 150MH	Medium
70HPS, 100HPS	Medium
150HPS	Mogul