

ASR26 Series

HID Luminaire



Shown with optional CFIN

Features

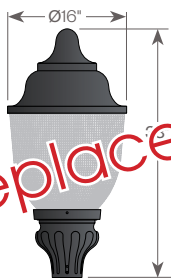
Lighting for exterior retail, commercial and hospitality environments. The ASR26 Series consists of a high performance luminaire designed around an efficient Type III (T3) or Type V (T5) refractive acorn combined with one of several styles of cast aluminum fitters.

Product Overview

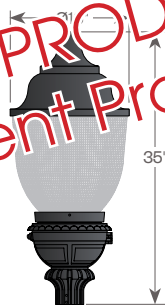
Wattage/Light Source: 70W, 100W, 150W / Metal Halide (MH)
70W, 100W, 150W / High Pressure Sodium (HPS)

PROJECT:

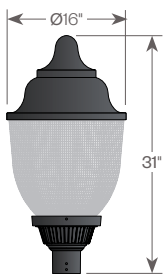
REPLACEMENT PRODUCT: ASR26 Series LED (AVI-G3)



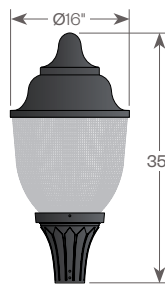
D131/ASR26
EPA: 1.80



D134/ASR26
EPA: 1.93



D135/ASR26
EPA: 1.70



D136/ASR26
EPA: 1.75

Installation:

The luminaire will mount to a 3" OD post or tenon with 5/16" black oxide coated stainless steel set screws to ensure a solid connection. The diffuser will be held to the fitter by (4) 5/16"-18 black oxide coated stainless steel captive set screws.

Electrical:

- High power factor ballast (HPF), core and coil type, pre-wired and tested
- Easy ballast pod access
- 4KV pulse rated porcelain socket

Diffuser Choices:

- Acrylic Type III (AC-T3)
- Acrylic Type V (AC-T5)
- Polycarbonate Type III (PC-T3)
- Polycarbonate Type V (PC-T5)

Finish:

Durable thermoset polyester powdercoat finish in the following:

- Satin Black (BLK)
- Classic Bronze (CLB)
- Gloss Textured Bronze (GBZ)
- Green (GRN)
- Gloss Textured Black (GTB)
- Textured Black (TBK)
- Gloss Textured Green (TGR)

Accessories:

- Cast aluminum Finial (CFIN)
- Faceted Downlight Reflector (FDR)
- 90 Degree house-side shield (HSS-90)
- 180 Degree house-side shield (HSS-180)
- Dusk-to-dawn Photocell (PCL)

ETL listed, suitable for wet locations.



Standard



with FDR (CL only)

ASR26 Series

HID Luminaire



PROJECT:

TYPE:

Ordering Information



Add additional accessories as needed

- | | |
|---|---|
| <p>1 <u>Model</u>
D131/ASR26
D134/ASR26
D135/ASR26
D136/ASR26</p> <p>2 <u>Diffuser Choices</u>
AC-T3 - Acrylic Type 3
AC-T5 - Acrylic Type 5
PC-T3 - Polycarbonate Type 3
PC-T5 - Polycarbonate Type 5</p> <p>3 <u>Light Source</u>
70MH - 70w Metal Halide
100MH - 100w Metal Halide
150MH - 150w Metal Halide
70HPS - 70w High Pressure Sodium
100HPS - 100w High Pressure Sodium
150HPS - 150w High Pressure Sodium
MDO - Medium Socket Only
MGO - Mogul Socket Only</p> <p>4 <u>Voltage</u>
120V
208V
240V
277V</p> | <p>5 <u>Finish</u>
BLK - Satin Black
CLB - Classic Bronze
GBZ - Gloss Textured Bronze
GRN - Green
GTB - Gloss Textured Black
TBK - Textured Black
TGR - Gloss Textured Green
CSTM - Custom</p> <p>6 <u>Accessories</u>
CFIN - Cast Aluminum Finial
FDR - Faceted Downlight Reflector
HSS-90 - 90° House Side Shield
HSS-180 - 180° House Side Shield
PCL - Dusk-to-dawn button type photocell</p> |
|---|---|

ASR26 Series

HID Luminaire

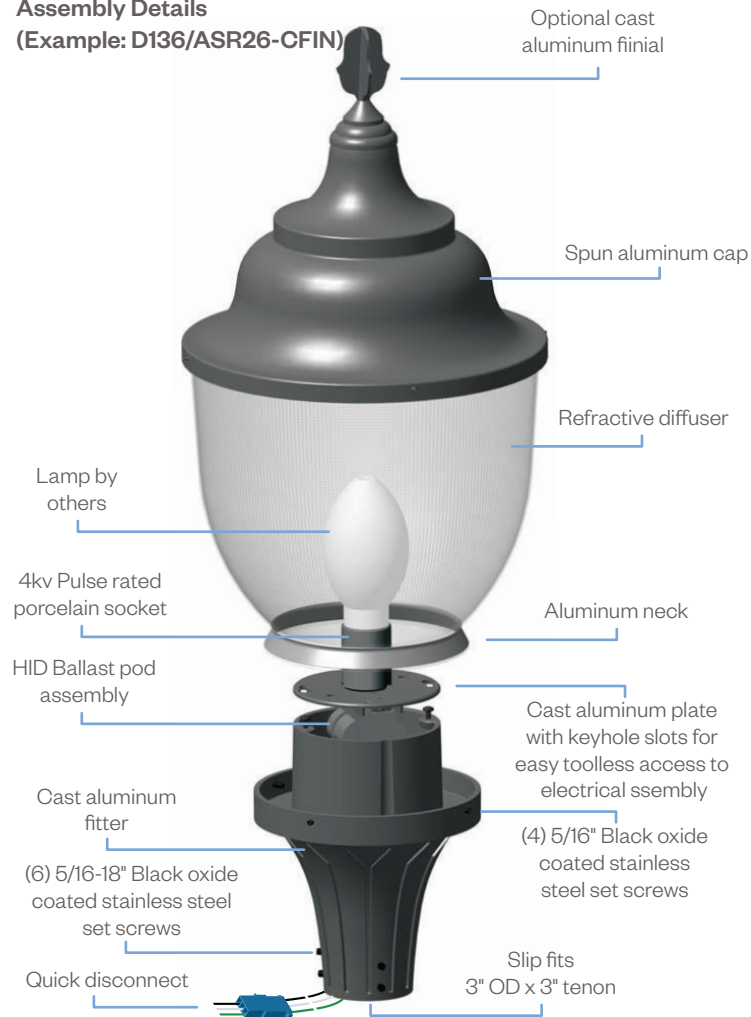


PROJECT:

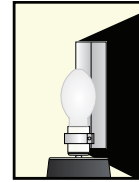
TYPE:

Assembly Details

(Example: D136/ASR26-CFIN)



Options



HSS90 & HSS180
House Side Shield
for use with
Optical Systems



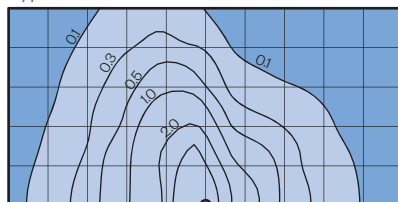
FDR
Faceted
Downlight
Reflector

Socket Types

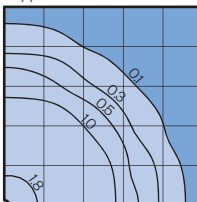
Wattage	Socket Type
70MH, 100MH, 150MH	Medium
70HPS, 100HPS	Medium
150HPS	Mogul

Photometry

Type III (T3)



Type V (T5)



Typical HID light source
14,000 Lumens
12' Mounting Height
Grid Spacing is 12'