

D323

HID Luminaire

Features

The D323 luminaire is a classically styled cast aluminum six sided lantern that offers a choice of several optical systems and lenses.



Product Overview

Wattage: 70W, 100W, 150W (MH)
70W, 100W, 150W (HPS)

PROJECT:



PRODUCT DISCONTINUED
Replacement Product:
D323 LED (AVI-G3) Luminaire

Installation:
The luminaire will mount to a 1/2" post or tenon with 1/8" black oxide coated stainless steel set screws to ensure a solid connection.

- Electrical:**
- High power factor ballast (HPF), core and coil type, pre-wired and tested
 - Easy ballast pod access
 - 4KV porcelain socket

- Lenses:**
- Clear Acrylic (CA)
 - Textured Acrylic (TA)

- Optical Options:**
- Refractor (L3, L5)
 - Faceted Downlight Reflector (FDR)

- Finish:**
Durable thermoset polyester powdercoat finish in the following:
- Satin Black (BLK)
 - Classic Bronze (CLB)
 - Gloss Textured Bronze (GBZ)
 - Green (GRN)
 - Gloss Textured Black (GTB)
 - Textured Black (TBK)
 - Gloss Textured Green (TGR)

- Accessories:**
- House side shield (HSS-90, HSS-180)
 - Dusk to dawn photocell (PCL)

ETL listed, suitable for wet locations.

EPA:
2.73



D323

HID Luminaire



PROJECT:

TYPE:

Ordering Information



* Leave blank if not selected

Add additional accessories as needed

- | | |
|--|--|
| <p>1 <u>Model</u>
D323</p> <p>2 <u>Lens</u>
CA - Clear Acrylic
TA - Textured Acrylic</p> <p>3 <u>Optical Option (not required)</u>
L3 - Type 3 Refractor
L5 - Type 5 Refractor
FDR - Faceted Downlight Reflector</p> <p>4 <u>Light Source</u>
70MH - 70W Metal Halide
100MH - 100W Metal Halide
150MH - 150W Metal Halide
70HPS - 70W High Pressure Sodium
100HPS - 100W High Pressure Sodium
150HPS - 150W High Pressure Sodium
MDO - Medium Socket Only
MGO - Mogul Socket Only</p> <p>5 <u>Voltage</u>
120V
208V
240V
277V</p> | <p>6 <u>Finish</u>
BLK - Satin Black
CLB - Classic Bronze
GBZ - Gloss Textured Bronze
GRN - Green
GTB - Gloss Textured Black
TBK - Textured Black
TGR - Gloss Textured Green
CSTM - Custom</p> <p>7 <u>Accessories</u>
HSS-90 - 90° House Side Shield
HSS-180 - 180° House Side Shield
PCL - Dusk-to-dawn button type photocell</p> |
|--|--|

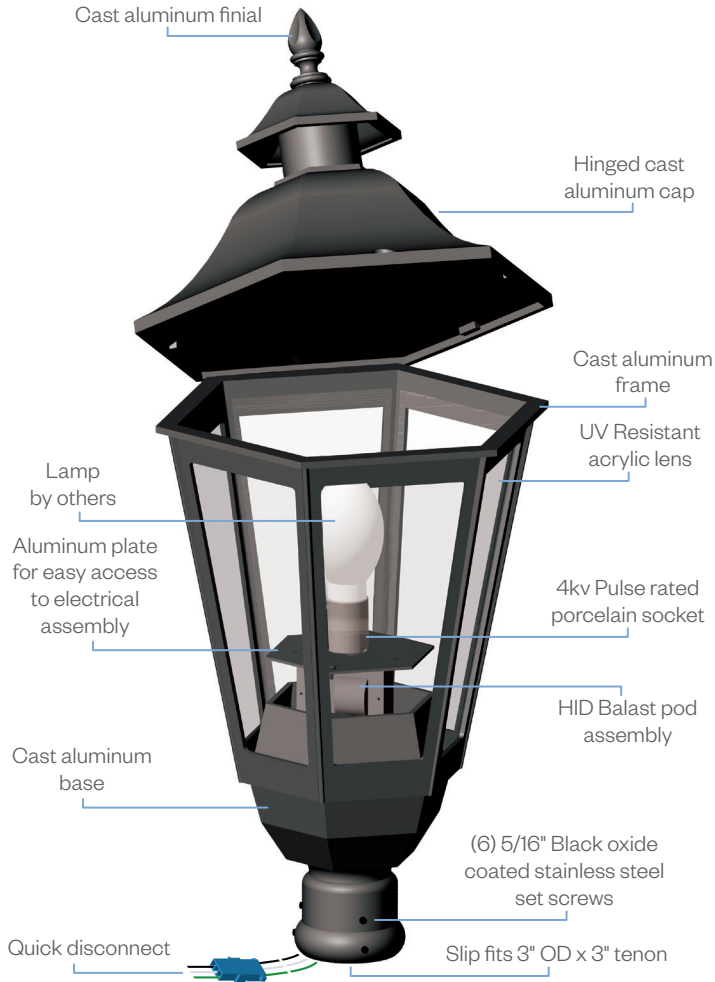
D323

HID Luminaire

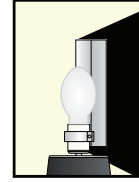
PROJECT:

TYPE:

Assembly Details (Typical)



Options



HSS90 & HSS180
House Side Shield
for use with
Optical Systems

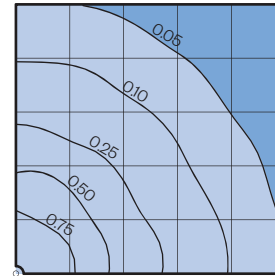


FDR
Faceted
Downlight
Reflector



L3 or L5
Type III or
Type V
Glass Refractor

Photometry



Typical HID light source
14,000 Lumens
12' Mounting Height
Grid Spacing is 12'

Socket Types

Wattage	Socket Type
70MH, 100MH, 150MH	Medium
70HPS, 100HPS	Medium
150HPS	Mogul