

# D720 Series

## HID Luminaire



### Features

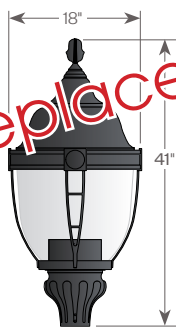
The D720 Series is a luminaire that features a clear acrylic lens surrounded by a decorative cage with a choice of cast aluminum fitters.

### Product Overview

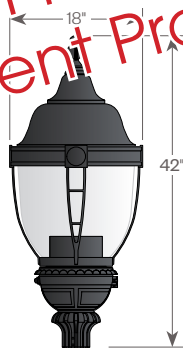
Wattage/Light Source: 70W, 100W, 150W / Metal Halide (MH)  
70W, 100W, 150W / High Pressure Sodium (HPS)

### PROJECT:

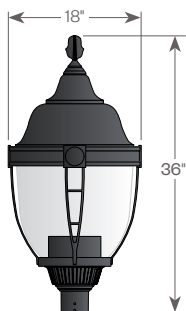
**PRODUCT DISCONTINUED**  
**Replacement Product: D720 Series LED (AVI-G3)**



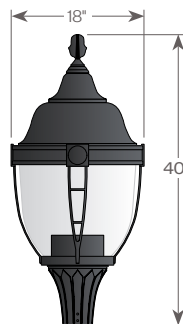
D721  
EPA: 2.16



D724  
EPA: 2.36



D725  
EPA: 2.13



D726  
EPA: 2.18

#### Installation:

The luminaire will mount to a 3" OD post or tenon with 5/16" black oxide coated stainless steel set screws to ensure a solid connection. The diffuser will be held to the fitter by (4) 5/16"-18 black oxide coated stainless steel set screws.

#### Electrical:

- High power factor ballast (HPF), core and coil type, pre-wired and tested
- Easy ballast pod access
- 4KV pulse rated porcelain socket

#### Optical Options:

- Refractive borosilicate glass - Specify Type III (L3) or Type V (L5) light distribution
- Hurricane glass (HG)
- Faceted downlight reflector (FDR)

#### Lens:

Clear Acrylic

#### Finish:

Durable thermoset polyester powdercoat finish in the following:

- Satin Black (BLK)
- Classic Bronze (CLB)
- Gloss Textured Bronze (GBZ)
- Green (GRN)
- Gloss Textured Black (GTB)
- Textured Black (TBK)
- Gloss Textured Green (TGR)

#### Accessories:

- 90 Degree house-side shield (HSS-90)
- 180 Degree house-side shield (HSS-180)
- Dusk-to-dawn Photocell (PCL)

ETL listed, suitable for wet locations.



Standard



with FDR

# D720 Series

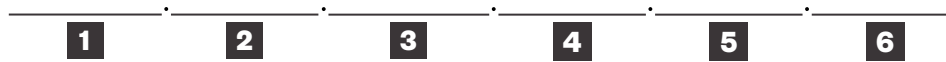
HID Luminaire



## PROJECT:

## TYPE:

### Ordering Information



Add additional accessories as needed

#### **1** Model

**D721**  
**D724**  
**D725**  
**D726**

#### **2** Optical Option

**L3** - Type 3 Refractor  
**L5** - Type 5 Refractor  
**FDR** - Faceted Downlight Reflector

#### **3** Light Source

**70MH** - 70w Metal Halide  
**100MH** - 100w Metal Halide  
**150MH** - 150w Metal Halide  
**70HPS** - 70w High Pressure Sodium  
**100HPS** - 100w High Pressure Sodium  
**150HPS** - 150w High Pressure Sodium  
**MDO** - Medium Socket Only  
**MGO** - Mogul Socket Only

#### **4** Voltage

**120V**  
**208V**  
**240V**  
**277V**

#### **5** Finish

**BLK** - Satin Black  
**CLB** - Classic Bronze  
**GBZ** - Gloss Textured Bronze  
**GRN** - Green  
**GTB** - Gloss Textured Black  
**TBK** - Textured Black  
**TGR** - Gloss Textured Green  
**CSTM** - Custom

#### **6** Accessories

**HSS-90** - 90° House Side Shield  
**HSS-180** - 180° House Side Shield  
**PCL** - Dusk-to-dawn button type photocell

# D720 Series

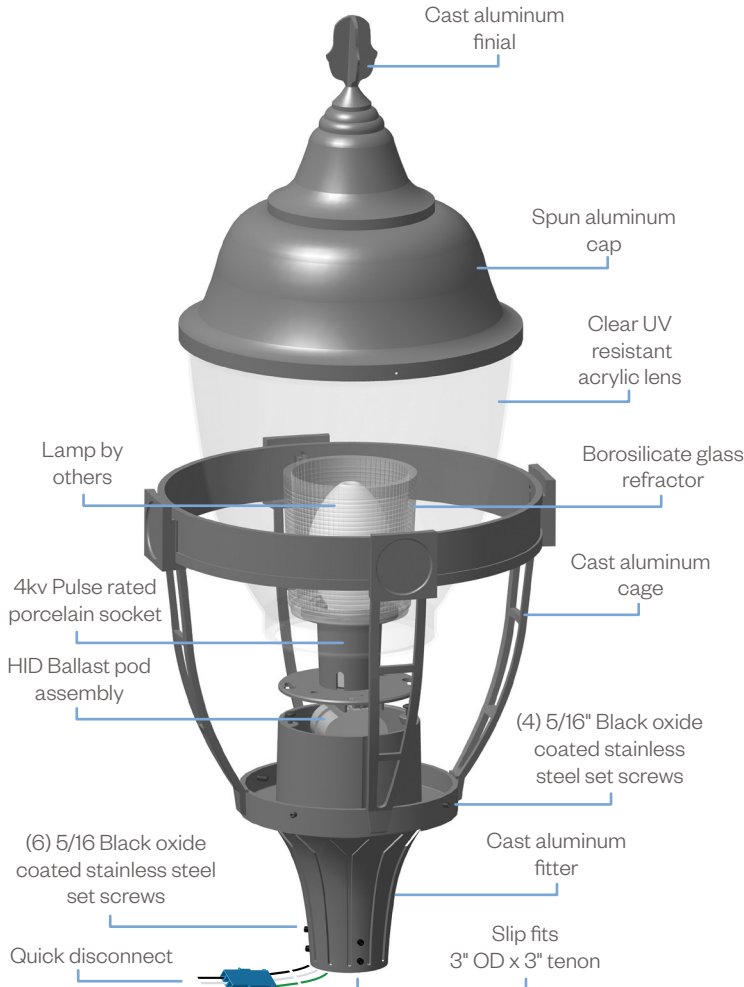
HID Luminaire



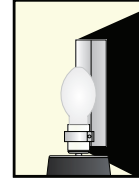
## PROJECT:

## TYPE:

### Assembly Details (Example: D726/L5)



### Options



**HSS90 & HSS180**  
House Side Shield  
for use with  
Optical Systems



**FDR**  
Faceted  
Downlight  
Reflector



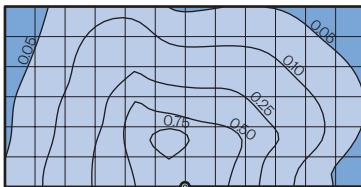
**L3 or L5**  
Type III or  
Type V  
Glass Refractor

### Socket Types

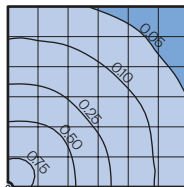
Wattage	Socket Type
70MH, 100MH, 150MH	Medium
70HPS, 100HPS	Medium
150HPS	Mogul

### Photometry

Type III (L3)



Type V (L5)



Typical HID light source  
14,000 Lumens  
12' Mounting Height  
Grid Spacing is 12'