

D701

HID Luminaire



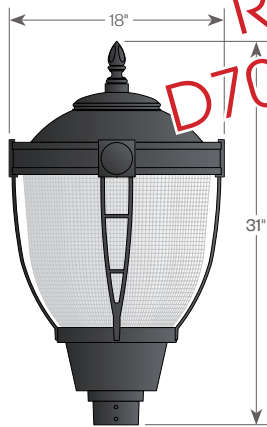
Features

The D701 is a high performance luminaire designed around an efficient Type III (T3) or Type V (T5) refractive lens. The spun aluminum hood minimizes light in the upper hemisphere.

Product Overview

Wattage/Light Source: 70W, 100W, 150W / Metal Halide (MH)
70W, 100W, 150W / High Pressure Sodium (HPS)

PROJECT:



PRODUCT DISCONTINUED
Replacement Product:
D701 LED (AVI-G3) Luminaire

Installation:

The luminaire will mount to a 1 1/2" post or tenon with 3/16" black oxide coated stainless steel set screws to ensure a solid connection. The diffuser will be held to the fitter by (4) 5/16"-18 black oxide coated stainless steel set screws.

Electrical:

- High power factor ballast (HPF), core and coil type, pre-wired and tested
- Easy ballast pod access
- 4KV pulse rated porcelain socket

Diffuser Choices:

- Acrylic Type III (**AC-T3**)
- Acrylic Type V (**AC-T5**)
- Polycarbonate Type III (**PC-T3**)
- Polycarbonate Type V (**PC-T5**)

Finish:

Durable thermoset polyester powdercoat finish in the following:

- Satin Black (**BLK**)
- Classic Bronze (**CLB**)
- Gloss Textured Bronze (**GBZ**)
- Green (**GRN**)
- Gloss Textured Black (**GTB**)
- Textured Black (**TBK**)
- Gloss Textured Green (**TGR**)

Accessories:

- 90 degree house-side shield (**HSS-90**)
- 180 degree house-side shield (**HSS-180**)
- Dusk-to-dawn button type photocell (**PCL**)

EPA:

1.89

ETL listed, suitable for wet locations.



D701

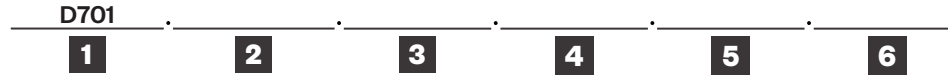
HID Luminaire



PROJECT:

TYPE:

Ordering Information



Add additional accessories as needed

- | | |
|---|---|
| <p>1 <u>Model</u>
D701</p> <p>2 <u>Diffuser Choicest</u>
AC-T3 - Acrylic Type 3
AC-T5 - Acrylic Type 5
PC-T3 - Polycarbonate Type 3
PC-T5 - Polycarbonate Type 5</p> <p>3 <u>Light Source</u>
70MH - 70w Metal Halide
100MH - 100w Metal Halide
150MH - 150w Metal Halide
70HPS - 70w High Pressure Sodium
100HPS - 100w High Pressure Sodium
150HPS - 150w High Pressure Sodium
MDO - Medium Socket Only
MGO - Mogul Socket Only</p> <p>4 <u>Voltage</u>
120V
208V
240V
277V</p> | <p>5 <u>Finish</u>
BLK - Satin Black
CLB - Classic Bronze
GBZ - Gloss Textured Bronze
GRN - Green
GTB - Gloss Textured Black
TBK - Textured Black
TGR - Gloss Textured Green
CSTM - Custom</p> <p>6 <u>Accessories</u>
HSS-90 - 90° House Side Shield
HSS-180 - 180° House Side Shield
PCL - Dusk-to-dawn button type photocell</p> |
|---|---|

D701

HID Luminaire

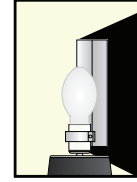
PROJECT:

TYPE:

Assembly Details



Options



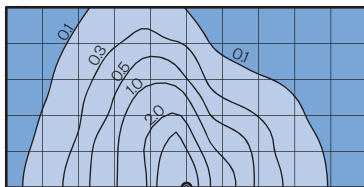
HSS90 & HSS180
House Side Shield
for use with
Optical Systems

Socket Types

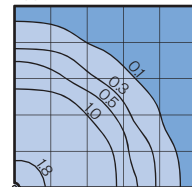
Wattage	Socket Type
70MH, 100MH, 150MH	Medium
70HPS, 100HPS	Medium
150HPS	Mogul

Photometry

Type III (T3)



Type V (T5)



Typical HID light source
14,000 Lumens
12' Mounting Height
Grid Spacing is 12'