

COACH STYLE LANTERN

Post Top Mount



Features

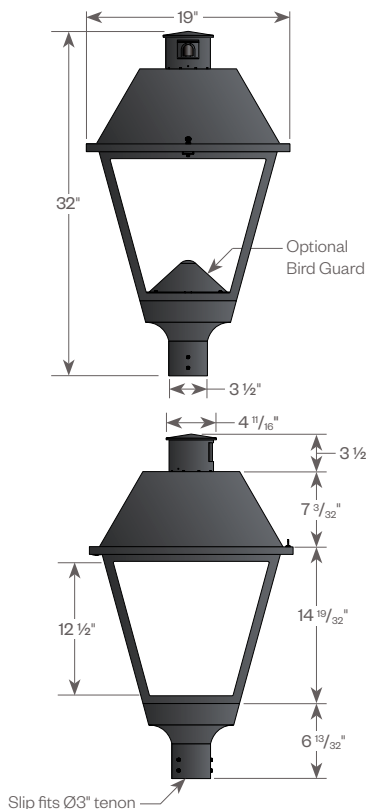
The Coach Style Lantern - Post Top (CSL-P) luminaire is a classically styled post-top lantern that offers a choice of several optical systems. Optional controls available.

Product Overview

| | |
|-----------------------------|---------------------------|
| Wattage: | 24W, 44W, 60W, 79W |
| Lumen Output : | 9,374 lm (79W, T2, 4000K) |
| Color Temp: | 3000K, 4000K |
| Dimming: | 0-10V dimming |
| Luminaire Weight (approx.): | 18 lbs (8.1 kg) |
| Shipping Weight (approx.): | 24 lbs (10.8 kg) |

PROJECT:

TYPE:



Construction:

Die-cast aluminum housing ensures rigidity and longevity in application. The rooftop casting is hinged to the cage and utilizes tool-less hardware for ease of installation and maintenance.

Optical Module:

The luminaire utilizes up to four IP66 sealed optical modules consisting of a high performance LED board with an acrylic (TIR) lens to deliver maximum spacing and uniformity. A choice of Type 2 (T2), Type 3 (T3), Type 4 (T4), or Type 5 (T5), IES distributions are available with the scalability to meet application criteria. Custom configurations available.

Electrical:

- 12 LEDs per module
- LED Board Drive Current 530mA (Custom drive currents available)
- Universal input voltage 120-277 VAC (50/60Hz)
- Operational Temp: -40°C/40°C
- Power consumption up to 79W
- Series wired 20kV/10kA surge protector (Per ANSI C82,77-5-2015)
- 0-10V dimming is standard
- A 347V/480V option is available
- DLC listed

Light Distribution:

- Type II (T2)
- Type III (T3)
- Type IV (T4)
- Type V (T5)

CCT:

- 3,000K (30)
- 4,000K (40)

Photo Control:

- A 3-pin twistlock photocell receptacle with a shorting cap is standard.
- An optional rotatable 7-pin (7P) twistlock photocell receptacle is available.
 - The 3-pin Twistlock photocell is an accessory and must be specified (TW-PCL).

Mounting:

Slip fits Ø3" tenon

Finish:

Durable thermoset polyester powdercoat finish in the following:

- Textured Black (TBK)
- Classic Bronze (CLB)
- Gloss Textured Bronze (GBZ)
- Gloss Textured Black (GTB)
- Satin Black (BLK)

Optional Lens:

- Textured Acrylic (TA)

Accessories:

- Bird Guard (BG)
- Backlight Shield (BLS) (available for T2, T3 & T4 distributions)
- Twistlock Photocell (TW-PCL)
- Wireless control option

EPA: 1.61

(2.77 with optional lens)



Certain Restrictions Apply for DarkSky International

COACH STYLE LANTERN

Post-Top Mount



PROJECT:

TYPE:

Ordering Information



- | | |
|--|--|
| <p>1 <u>Model</u> CSL-P</p> <p>2 <u>LED Modules</u> 1M - 1 Module 2M - 2 Modules 3M - 3 Modules 4M - 4 Modules</p> <p>3 <u>CCT</u> 30 - 3,000K 40* - 4,000K</p> <p>4 <u>Light Distribution</u> T2 - Type 2 T3 - Type 3 T4 - Type 4 T5 - Type 5</p> | <p>5 <u>Finish</u> TBK - Textured Black CLB - Classic Bronze GBZ - Gloss Textured Bronze GTB - Gloss Textured Black BLK - Satin Black</p> <p>6 <u>Options/Accessories</u> 347V/480V - 347/480 Voltage TA* - Textured Acrylic Lens BG - Bird Guard BLS - Backlight Shield (available for T2, T3 & T4 distributions) TW-PCL - Twistlock Photocell 7P- Optional 7 pin NEMA Receptacle (to allow installation of a wireless control node for operation on the SmartSite or other control platform)</p> |
|--|--|

To meet DarkSky International Fixture Seal of Approval
3000K CCT must be chosen, and no Textured
Acrylic (TA) option used.
* Not approved with 4000K & TA options.

COACH STYLE LANTERN

Post-Top Mount



Coach Style Lantern - Post Top (CSL-P)

PROJECT:

TYPE:

Power

| LED Modules | 1M | 2M | 3M | 4M |
|--------------------------|------|------|------|------|
| Power | 24W | 44W | 60W | 79W |
| Amperage Draw @ 120V (A) | 0.2 | 0.36 | 0.50 | 0.65 |
| Amperage Draw @ 277V (A) | 0.08 | 0.15 | 0.21 | 0.28 |

Performance Chart

| Driver Output | System Watts | Light Distribution | CCT | Lumens* | Bug Rating | Lumens with TA Lens | | |
|---------------|--------------|--------------------|--------|---------|------------|---------------------|-------|-------|
| 1M | 24W | T2 | 3,000K | 2,215 | 1-0-1 | 2,060 | | |
| | | | 4,000K | 2,395 | 1-0-1 | 2,227 | | |
| | | T3 | 3,000K | 2,234 | 1-0-1 | 2,078 | | |
| | | | 4,000K | 2,416 | 1-0-1 | 2,247 | | |
| | | T4 | 3,000K | 2,161 | 1-0-1 | 2,010 | | |
| | | | 4,000K | 2,336 | 1-0-1 | 2,228 | | |
| | | T5 | 3,000K | 2,257 | 1-0-0 | 2,099 | | |
| | | | 4,000K | 2,440 | 1-0-0 | 2,269 | | |
| | | 2M | 44W | T2 | 3,000K | 4,326 | 1-0-1 | 4,023 |
| | | | | | 4,000K | 4,677 | 1-0-1 | 4,350 |
| T3 | 3,000K | | | 4,366 | 1-0-1 | 4,060 | | |
| | 4,000K | | | 4,720 | 1-0-1 | 4,390 | | |
| T4 | 3,000K | | | 4,224 | 1-0-1 | 3,928 | | |
| | 4,000K | | | 4,567 | 1-0-2 | 4,247 | | |
| T5 | 3,000K | | | 4,411 | 2-0-1 | 4,102 | | |
| | 4,000K | | | 4,769 | 2-0-1 | 4,435 | | |
| 3M | 60W | | | T2 | 3,000K | 6,471 | 1-0-1 | 6,018 |
| | | | | | 4,000K | 6,996 | 2-0-2 | 6,506 |
| | | T3 | 3,000K | 6,524 | 2-0-2 | 6,067 | | |
| | | | 4,000K | 7,054 | 2-0-2 | 6,560 | | |
| | | T4 | 3,000K | 6,318 | 1-0-2 | 5,876 | | |
| | | | 4,000K | 6,831 | 1-0-2 | 6,353 | | |
| | | T5 | 3,000K | 6,598 | 3-0-1 | 6,136 | | |
| | | | 4,000K | 7,134 | 3-0-1 | 6,635 | | |
| | | 4M | 79W | T2 | 3,000K | 8,503 | 2-0-2 | 7,908 |
| | | | | | 4,000K | 9,374 | 2-0-2 | 8,718 |
| T3 | 3,000K | | | 8,570 | 2-0-2 | 7,970 | | |
| | 4,000K | | | 9,193 | 2-0-2 | 8,549 | | |
| T4 | 3,000K | | | 8,302 | 2-0-2 | 7,721 | | |
| | 4,000K | | | 8,976 | 2-0-2 | 8,616 | | |
| T5 | 3,000K | | | 8,350 | 3-0-1 | 7,766 | | |
| | 4,000K | | | 8,976 | 3-0-1 | 8,348 | | |

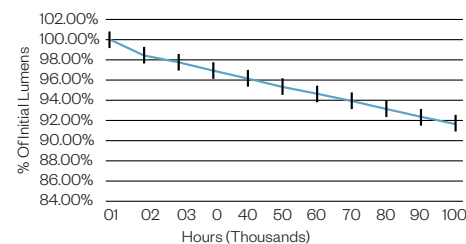
* Approximate lumens delivered from raw light engine.

Lumen Maintenance

| Ambient Temp | 50,000 Hours* | 70,000 Hours* | 90,000 Hours* | 100,000 Hours* | Theoretical L70 Hours |
|--------------|---------------|---------------|---------------|----------------|-----------------------|
| 25°C | >95.4% | >93.9% | >92.4% | >91.6% | >200,000 |

* Per IESNA TM-21 data

Lumen maintenance values apply to all output levels and distributions.



COACH STYLE LANTERN

Post-Top Mount



PROJECT:

TYPE:

Standard and Optional Lens Offering



An open cage with no lens is standard.



A textured acrylic lens is optional. Specify **(TA)** when ordering. Not approved for IDA Dark Sky.

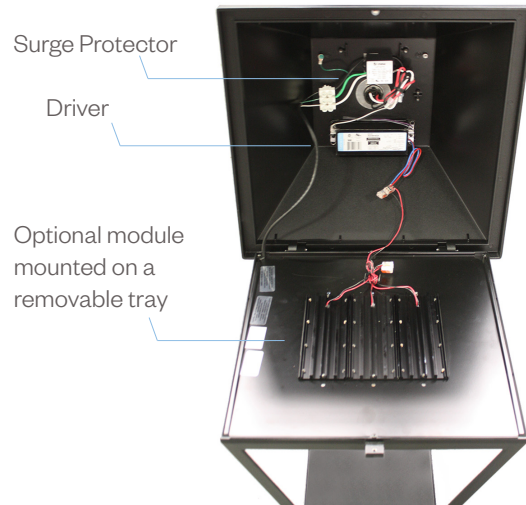
Installation Access

The CSL luminaire comes fully wired and ready for a simple installation. The terminal block is located below a tool-less access plate in the base of the luminaire.



Maintenance Access

Although not required for installation, all components are easily accessed below a hinged roof for maintenance, if required.



COACH STYLE LANTERN

Post-Top Mount

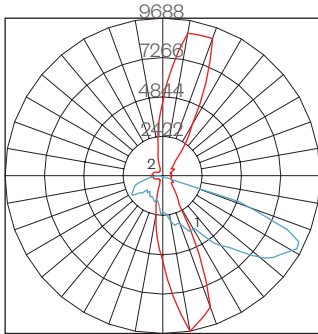


PROJECT:

TYPE:

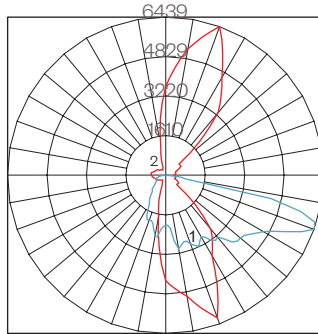
Performance Chart

CSL-P-4M-T2-4K



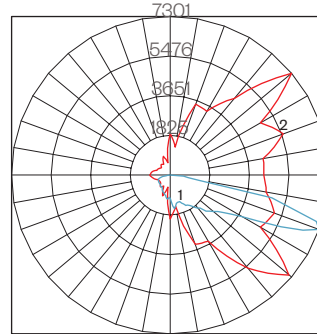
Maximum Candela = 9688
 Located At Horizontal Angle = 280; Vertical Angle = 62.5
 #1 - Vertical Plane Through Horizontal Angles (280-100)*
 #2 - Horizontal Cone Through Vertical Angle (62.5)*
 * Through Max. Cd.

CSL-P-4M-T3-4K



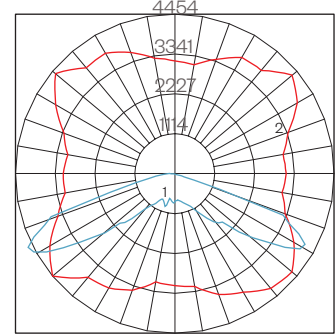
Maximum Candela = 6439
 Located At Horizontal Angle = 70; Vertical Angle = 70
 #1 - Vertical Plane Through Horizontal Angles (70-250)*
 #2 - Horizontal Cone Through Vertical Angle (70)*
 * Through Max. Cd.

CSL-P-4M-T4-4K



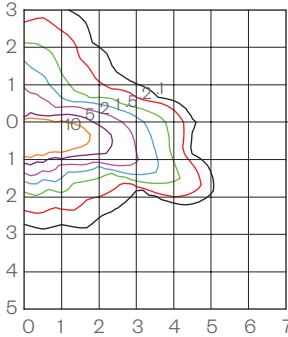
Maximum Candela = 7301
 Located At Horizontal Angle = 40; Vertical Angle = 70
 #1 - Vertical Plane Through Horizontal Angles (40-220)*
 #2 - Horizontal Cone Through Vertical Angle (70)*
 * Through Max. Cd.

CSL-P-4M-T5-4K



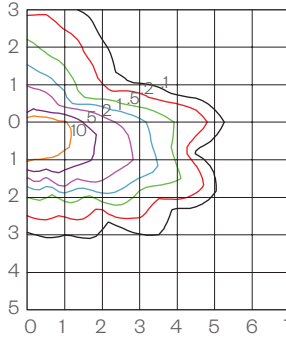
Maximum Candela = 4454
 Located At Horizontal Angle = 220; Vertical Angle = 62.5
 #1 - Vertical Plane Through Horizontal Angles (220-40)*
 #2 - Horizontal Cone Through Vertical Angle (62.5)*
 * Through Max. Cd.

ISOFOOTCANDLE LINES OF HORIZONTAL ILLUMINANCE



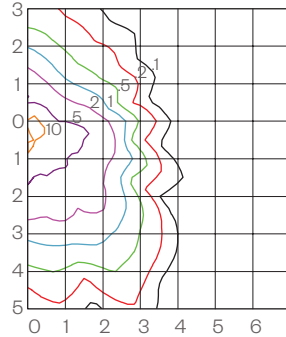
Distance in Units of Mounting Height

ISOFOOTCANDLE LINES OF HORIZONTAL ILLUMINANCE



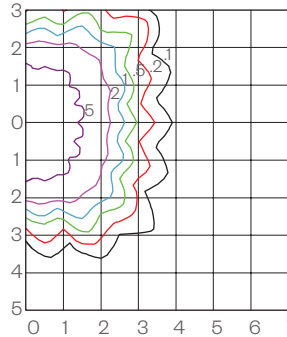
Distance in Units of Mounting Height

ISOFOOTCANDLE LINES OF HORIZONTAL ILLUMINANCE



Distance in Units of Mounting Height

ISOFOOTCANDLE LINES OF HORIZONTAL ILLUMINANCE

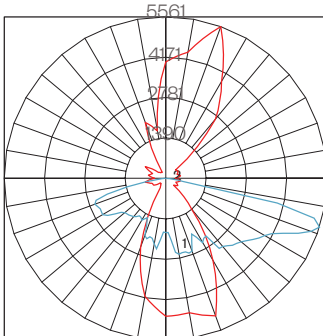


Distance in Units of Mounting Height

Customizable Performance

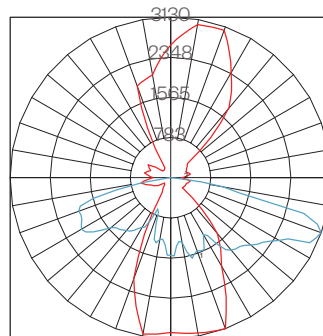
Photometry can be modified using different drive currents and a combination of lenses. Consult factory. See examples below.

CSL-P-4M-T3ST2H-4K-580M



Maximum Candela = 5561
 Located At Horizontal Angle = 70; Vertical Angle = 72.5
 #1 - Vertical Plane Through Horizontal Angles (70-250)*
 #2 - Horizontal Cone Through Vertical Angle (72.5)*
 * Through Max. Cd.

CSL-P-4M-T3ST2H-4K-470M



Maximum Candela = 3130
 Located At Horizontal Angle = 290; Vertical Angle = 70
 #1 - Vertical Plane Through Horizontal Angles (290-110)*
 #2 - Horizontal Cone Through Vertical Angle (70)*
 * Through Max. Cd.

Backlight Shield

Shield can be easily installed in the field when required.

