

INSTRUCTION SHEET



689-1007

PAGE 1 OF 2

WARNING - RISK OF FIRE AND ELECTRICAL SHOCK. FIXTURE MUST BE INSTALLED BY A QUALIFIED ELECTRICIAN ONLY. FIXTURE IS INTENDED FOR INSTALLATION IN ACCORDANCE WITH THE NATIONAL ELECTRICAL CODE, LOCAL AND FEDERAL SPECIFICATIONS. DISCONNECT POWER AT ELECTRICAL PANEL BEFORE SERVICING.

RETAIN THESE INSTRUCTIONS FOR MAINTENANCE REFERENCE.

TOOLS REQUIRED:

1. Socket wrench set
2. Channel lock pliers
3. Phillips screwdriver
4. Appropriate wire connectors (Consult electrical codes)

LUMINAIRE INSTALLATION

Ensure power is turned off to the luminaire connection point.

The cast aluminum housing provided (Diagram 1) is designed to be permanently installed in grade by setting it in poured concrete.

Follow all local, state and national codes that may govern the installation.

1. The installation occurs over 2 phases. The base housing is installed in concrete and then luminaire installation occurs after concrete is cured.
2. Using the two provided 1/2 threaded conduit holes in the bottom, run conduit in and out of the housing so that it will sit at the desired finished height. Add support or temporary bracing as needed.
3. Separate the two portions of the housing if needed to make access easier for wire pulling or connections. Be sure to securely attach the two portion again when complete. **After the concrete is poured in place there will only be access to the smaller top opening.**
4. **Be sure the temporary cover is in place before pouring concrete to prevent material from entering the housing .**
5. For proper installation the HOUSING MUST BE INSTALLED SO THAT THE TOP OF THE HOUSING SITS FLUSH OR SLIGHTLY ABOVE THE FINISHED SURFACE TO MINIMIZE THE RISK OF WATER ENTRY INTO THE HOUSING. Take care to not install the product in a low lying area where water will collect and stand around the base. Water should flow away from the installation point.
6. Luminaire installation—Remove the temporary cover and discard. Connect and add enough lead wire to go from the junction box to the top of the fixture.



Diagram 1

7. Install the baseplate with gasket and center shaft onto the poured base using four screws provided, and pull the wires from the base so that they exit out the side of the center shaft and direct them towards the top.
8. Slide the exterior painted tube of the bollard onto the base, leaving the wires accessible.

Diagram 2



INSTRUCTION SHEET



689-1007

PAGE 2 OF 2

WARNING - RISK OF FIRE AND ELECTRICAL SHOCK. FIXTURE MUST BE INSTALLED BY A QUALIFIED ELECTRICIAN ONLY. FIXTURE IS INTENDED FOR INSTALLATION IN ACCORDANCE WITH THE NATIONAL ELECTRICAL CODE, LOCAL AND FEDERAL SPECIFICATIONS. DISCONNECT POWER AT ELECTRICAL PANEL BEFORE SERVICING.

RETAIN THESE INSTRUCTIONS FOR MAINTENANCE REFERENCE.

9. The light engine (cone portion of the Lunetta) slides over and sits flush to the outer tube but does not attach with any fasteners at the connection. Make all wire connections at this point.

The **BLACK** wire is the **MAIN LINE POWER** connected to the **BLACK (LINE)** of the Power Supply, the **WHITE** wire is **COMMON (or NEUTRAL)** connected to **WHITE (NEUTRAL)** wires of the Power Supply and the **GREEN** wire is **GROUND**.

10. Slide the Lunetta top housing over the light engine and the previously installed center column and base. (Below) Ensure that the bottom edge aligns closely with the cone, and that no wires are pinched.



11. Using the large 1/2 conduit nut provided, secure the top housing to the center column. The connection should be snug but do not apply excessive force. The bollard should not easily move from side to side, and no play should be evident in the connection.

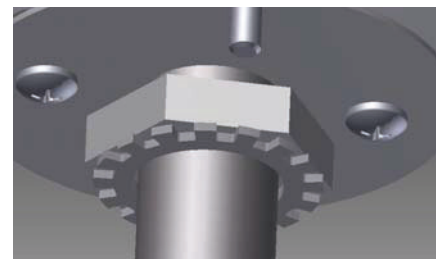


Diagram 7

12. Install the top cover which hides the large nut using the captive screws accessed thru the small holes in the top cover. (Diagram 8).



Diagram 8