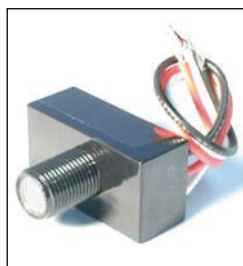
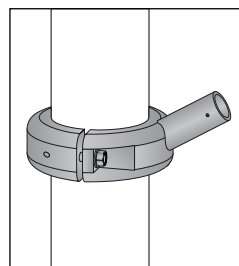


Pole Accessories



PCL (120V only)
PCL-MULTI (208V thru 277V)
Dusk to dawn button type photocell for automatic switching of luminaires. Black carbonate housing. See Accessory orientation guide to specify location.

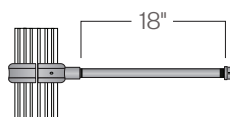


FPH-4 or FPH-5
Extruded aluminum holder for 1" OD flag poles. The flag pole holder is set to 45° angle and welded to a field rotatable and height adjustable collar. Available for 4" OD and 5" OD non-tapered poles.

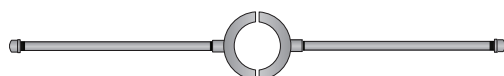
Banner Arms



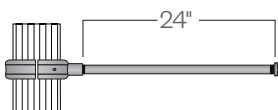
2BA24-FRC4-180



BA18-FRC4



2BA24-FRC5-180



BA24-FRC5

Single or double sided field rotatable banner arms.

BA18 - 18" banner arm

BA24 - 24" banner arm

FRC4 - 4" OD shaft

FRC5 - 5" OD shaft

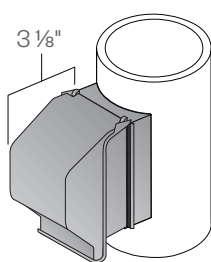
Add a (2) for a double arm.

Example: **2BA18-FRC4**

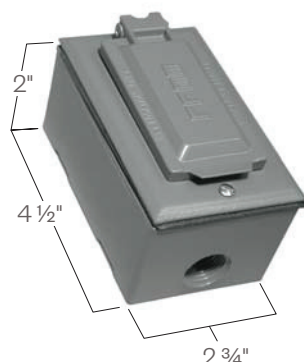
Finish on all arms will match posts.

GFCI

The 20 amp, 125 volt, ground fault circuit interrupter duplex receptacles are mounted to the top or bottom of the pole. The receptacles shall have a cast aluminum UL listed cover. The GFCI has a cover that is suitable for wet locations while in use. the receptacle and cover shall mount to an outlet opening, in the post shaft or base, with a gasket and stainless steel screws. Finish will match pole.



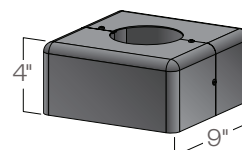
GFCI-TOP or GFCI BTM



Two Piece Cover

Fabricated from stamped and formed aluminum.

4-COV



5-COV

